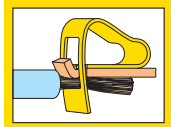
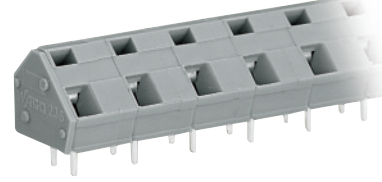
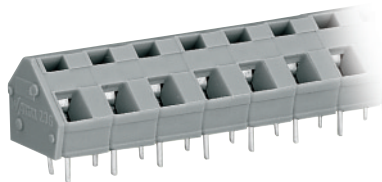
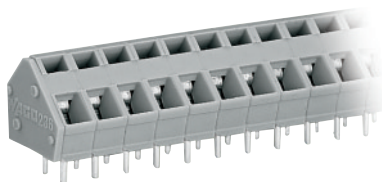


Terminal Strips 2.5 mm²/AWG 12, Series 236, Pin Spacings 5/5.08 mm/0.2 in, 7.5/7.62 mm/0.3 in, 10/10.16 mm/0.4 in



Pin spacing 5/5.08 mm / 0.2 in 0.08 – 2.5 mm ² AWG 28 – 12 250 V/4 kV/3, 16 A 300 V, 15 A 500 V/4 kV/2, 16 A 300 V, 15 A 5 – 6 mm / 0.22 in *	Pin spacing 7.5/7.62 mm / 0.3 in 0.08 – 2.5 mm ² AWG 28 – 12 400 V/6 kV/3, 16 A 300 V, 15 A 800 V/6 kV/2, 16 A 300 V, 15 A 5 – 6 mm / 0.22 in *	Pin spacing 10/10.16 mm / 0.4 in 0.08 – 2.5 mm ² AWG 28 – 12 500 V/6 kV/3, 16 A 300 V, 15 A 1000 V/6 kV/2, 16 A 300 V, 15 A 5 – 6 mm / 0.22 in *
--	--	---



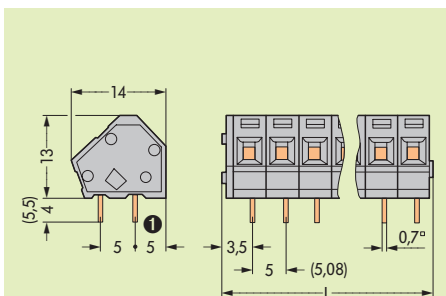
No. of poles	Item No.	Pack.-unit pcs	No. of poles	Item No.	Pack.-unit pcs	No. of poles	Item No.	Pack.-unit pcs
Terminal strips, grey, standard lengths, 1 solder pin/pole, rear ①			Terminal strips, grey, standard lengths, 1 solder pin/pole, rear ①			Terminal strips, grey, standard lengths, 1 solder pin/pole, rear ①		
2	236-102	420 (4 x 105)	2	236-202	280 (4 x 70)	2	236-302	200 (4 x 50)
3	236-103	280 (4 x 70)	3	236-203	200 (4 x 50)	3	236-303	140 (4 x 35)
4	236-104	220 (4 x 55)	4	236-204	140 (4 x 35)	4	236-304	100 (4 x 25)
6	236-106	140 (4 x 35)	6	236-206	100 (4 x 25)	6	236-306	80 (4 x 20)
8	236-108	100 (4 x 25)	8	236-208	80 (4 x 20)	8	236-308	60 (4 x 15)
12	236-112	80 (4 x 20)	12	236-212	40 (4 x 10)	12	236-312	40 (4 x 10)
16	236-116	60 (4 x 15)	16	236-216	40 (4 x 10)	16	236-316	20 (4 x 5)
24	236-124	40 (4 x 10)	24	236-224	20 (4 x 5)	24	236-324	20 (4 x 5)
36	236-136	20 (4 x 5)						
48	236-148	20 (4 x 5)						
2 solder pins/pole			2 solder pins/pole			2 solder pins/pole		
2	236-402	420 (4 x 105)	2	236-502	280 (4 x 70)	2	236-602	200 (4 x 50)
3	236-403	280 (4 x 70)	3	236-503	200 (4 x 50)	3	236-603	140 (4 x 35)
4	236-404	220 (4 x 55)	4	236-504	140 (4 x 35)	4	236-604	100 (4 x 25)
6	236-406	140 (4 x 35)	6	236-506	100 (4 x 25)	6	236-606	80 (4 x 20)
8	236-408	100 (4 x 25)	8	236-508	80 (4 x 20)	8	236-608	60 (4 x 15)
12	236-412	80 (4 x 20)	12	236-512	40 (4 x 10)	12	236-612	40 (4 x 10)
16	236-416	60 (4 x 15)	16	236-516	40 (4 x 10)	16	236-616	20 (4 x 5)
24	236-424	40 (4 x 10)	24	236-524	20 (4 x 5)	24	236-624	20 (4 x 5)
36	236-436	20 (4 x 5)						
48	236-448	20 (4 x 5)						

For assemblies in other lengths and colors, please contact factory.

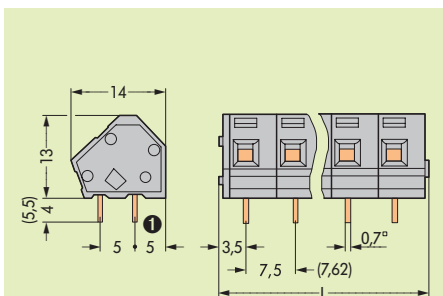


Additional item Nos. for colored terminal strips	Additional item No. for 2 solder pins/pole and with solder pins 3.6 mm / 0.142 in
black .../...-004 ●	.../334-000
blue .../...-006 ②	with solder pins 5.5 mm / 0.217 in
dark grey .../...-008 ●	.../332-000
light grey .../...-009 ○	② suitable for Ex i applications (only suitable for pin spacings 7.5/7.62 mm/0.3 in and 10/10.16 mm/0.4 in)
orange .../...-012 ●	Ex e II see pages 1.22 – 1.23
light green .../...-017 ●	
green .../...-023 ●	

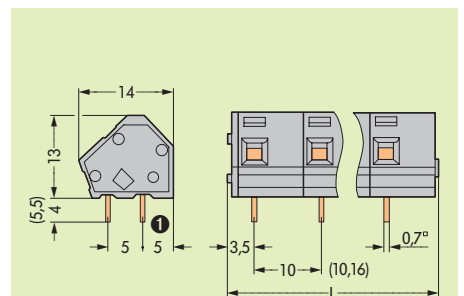
Dimensions (in mm) (Adjustment of pin spacing is made by pulling on the end blocks so that they expand to satisfy the hole center required.)



Diameter of drilled hole: 1.1^{+0.1} mm
L = (No. of poles x pin spacing) + 2.3 mm



Diameter of drilled hole: 1.1^{+0.1} mm
L = (No. of poles x pin spacing) + 2.3 mm



Diameter of drilled hole: 1.1^{+0.1} mm
L = (No. of poles x pin spacing) + 2.3 mm