



Outdoor Drivers for Luxeon™ LEDs



Applications

- Orientation/Step Lighting
- Architectural Lighting
- Channel Letters
- Contour Lighting
- Edge Lighting



Luxeon LEDs from Lumileds Lighting represent state-of-the-art in solid-state lighting devices. Luxeon offers the brightest LEDs on the market in a very compact package...ideally suited for high lumen, general lighting applications.

The Brain Behind the Bright Idea

Xitanium LED drivers from Philips Lighting are designed specifically for Luxeon LEDs applications while incorporating features that enable broad commercialization of end-use solid-state lighting products.

Features

- Safe low current and voltage
- IP66 Outdoor rated
- Ultra small, compact size
- Extreme low temperature Performance (-40°C)
- Generous high temperature capability (+60°C)
- Tightly regulated output (1% line, 5% load)
- 5 year warranty
- Powered by Philips

Benefits

- Limited output voltage and current plus isolation for safe operation
- Fully potted for moisture resistance and thermal benefits
- Facilitates new, low-profile fixture design
- Allows use in any outdoor application
- Margin flexibility to facilitate fixture design
- Consistent light output across line and load levels
- Peace of mind for your new products and for end users...from the industry's most trusted component maker
- Philips is preferred by end users – Enhance the value of your product

Quick Selection Table

Catalog Number	Description	Application
9137 001 93803	12 Watt 350mA Outdoor	<ul style="list-style-type: none"> 1-8 Luxeon I
9137 001 94903	17 Watt 700mA Outdoor	<ul style="list-style-type: none"> 2, 4, 6, 8, 10 or 12 Luxeon I 6-up and 12-up Luxeon I lines, rings or arrays 1-5 Luxeon III 1-3 Luxeon V
9137 007 04403	40 Watt 1750mA Outdoor	<ul style="list-style-type: none"> 5, 10, 15, 25 or 30 Luxeon I
9137 007 04303	80 Watt 3150mA Outdoor	<ul style="list-style-type: none"> 9, 18, 27, 36, 45 or 54 Luxeon I

LED Driver Specifications

Description	Catalog Number	Input			Output				Case Temp Max (°C)	Figure	Weight (Grams)
		Volts (V)	Power Max (W)	Current Max (A)	Power Min (W)	Power Max (W)	Current Nom (A)	Voltage Range (V)			
12 Watt	9137 001 93803	230±10%	15.0	0.07	1.0	12.0	0.35	2.8 ~ 33.0	90	A	70
17 Watt	9137 001 94903	230±10%	21.5	0.10	1.0	17.0	0.70	2.8 ~ 24.6	90	A	70
40 Watt*	9137 007 04403	230±10%	52.0	0.25	5.0	42.0	1.75	2.8 ~ 24.0	TBD	TBD	450
80 Watt	9137 007 04303	230±10%	100.0	0.48	10.0	80.0	3.15	2.8 ~ 25.5	85	B	635

* Available August 1, 2004

Total Harmonic Distortion: 20% max

Power Factor: 90% min

Efficiency: 80% typical

Line Regulation: 1% output variation across input voltage range

Load Regulation: 5% output variation across input voltage range

Current Crest Factor: 1.5 max

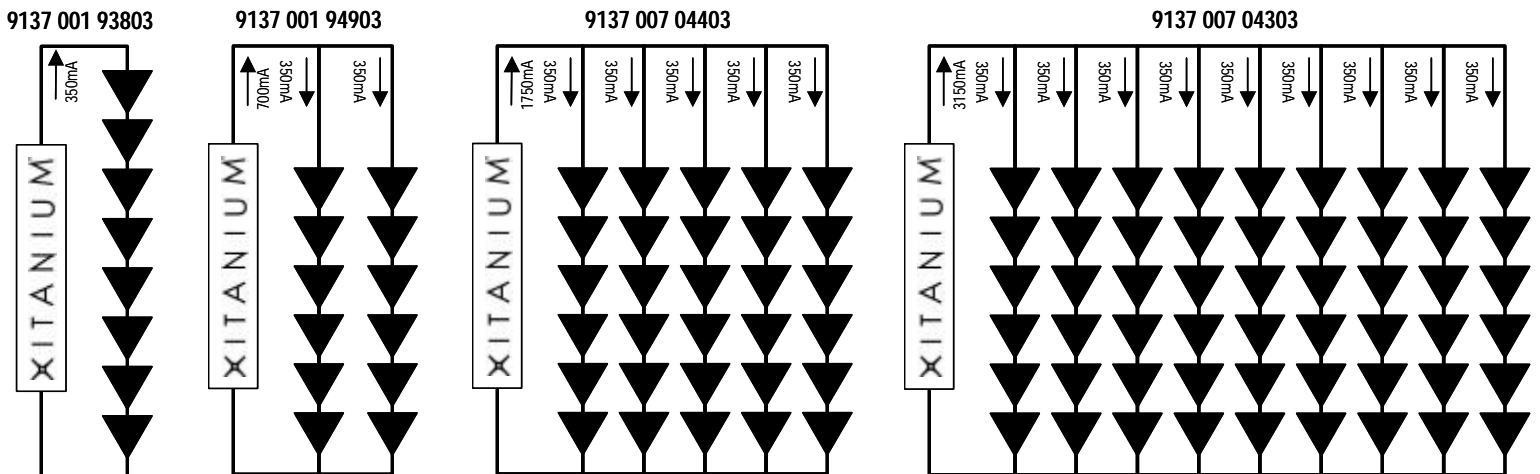
Environmental Protection: IP66 outdoor rated

EMI: CISPR15 and CISPR22 Class A

Protection: Inherent short-circuit protection, self-limited; overload protected; 3.2KV output insulation

AC Input and DC Output: 2 (0.78mm²) Solid Copper Wires, 15cm long

Wiring Diagram*



* Diagrams displayed consider Drivers operating Luxeon I LEDs.

At least one Luxeon LED must be connected on each row.

Dimensions

Fig. A

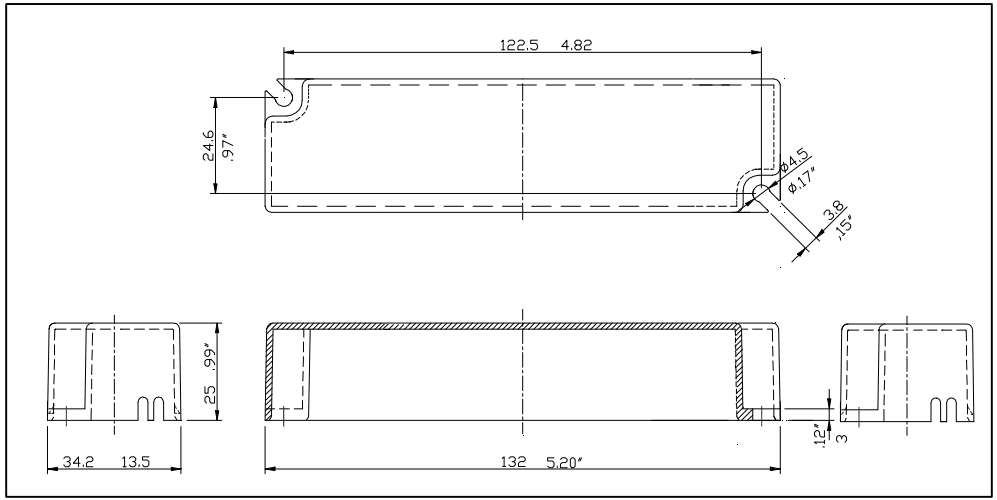


Fig. B

