

# Skeleton Box

## Introduction

Looking for a shell for your electronic prototypes? The Skeleton Box is a handy solution. It consists of three parts - a hollow mounting rack, a mounting board for installation of your own circuit board and a back plate that shelters the circuit board. The highly simplified structure enables you to quickly build a hard cover for your invention which is both good-looking and protective. Now get a Skeleton Box and test your design anywhere you like, while other engineers are still suffering from the headache of making their own shell.

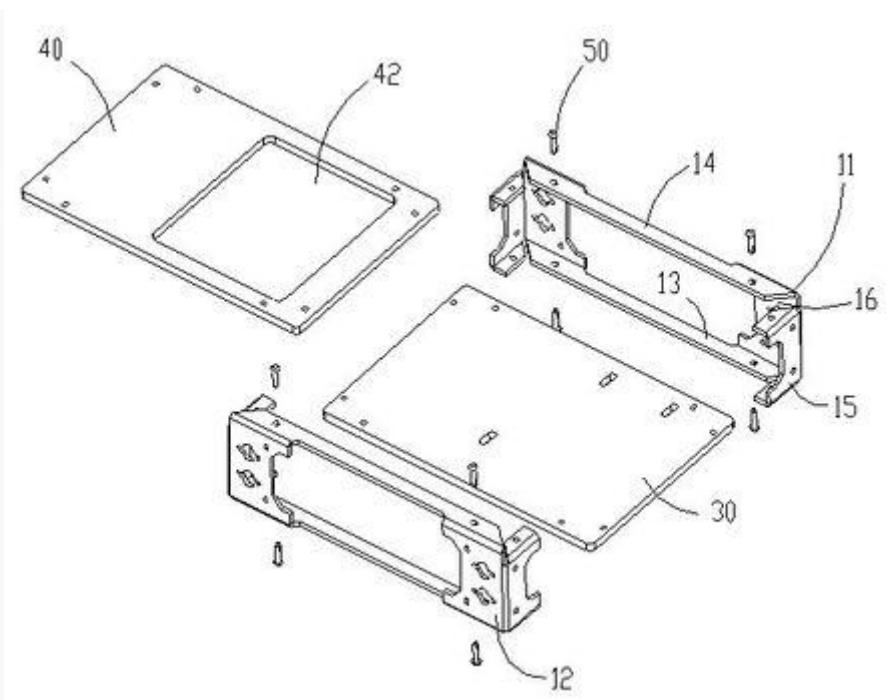
## Features

- Neat and universal
- Easy to assemble
- Solid and stable material

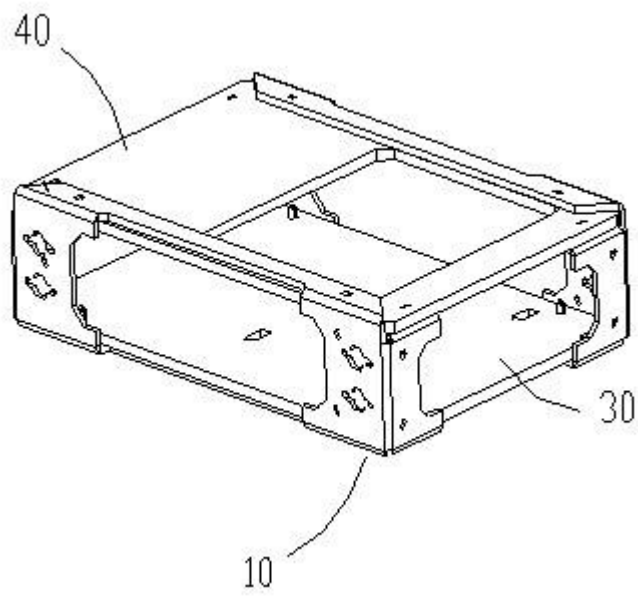
## Specifications

Item	Typical	Unit
Length	126.8	mm
Width	89.2	mm
Height	30.0	mm

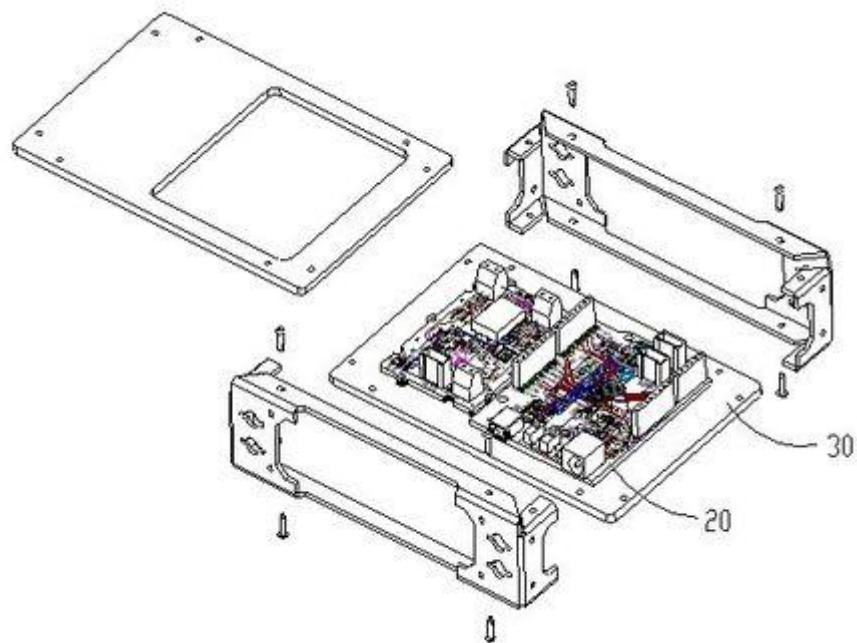
## Usage



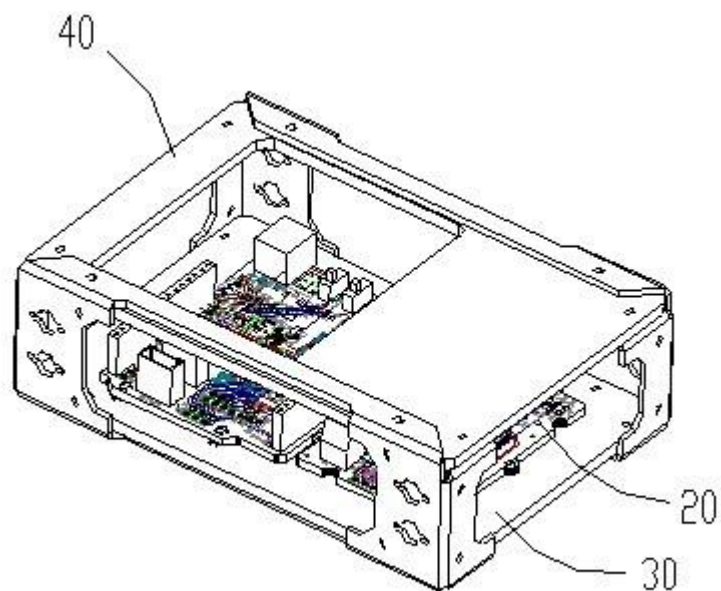
A schematic representation of the dismantling structure



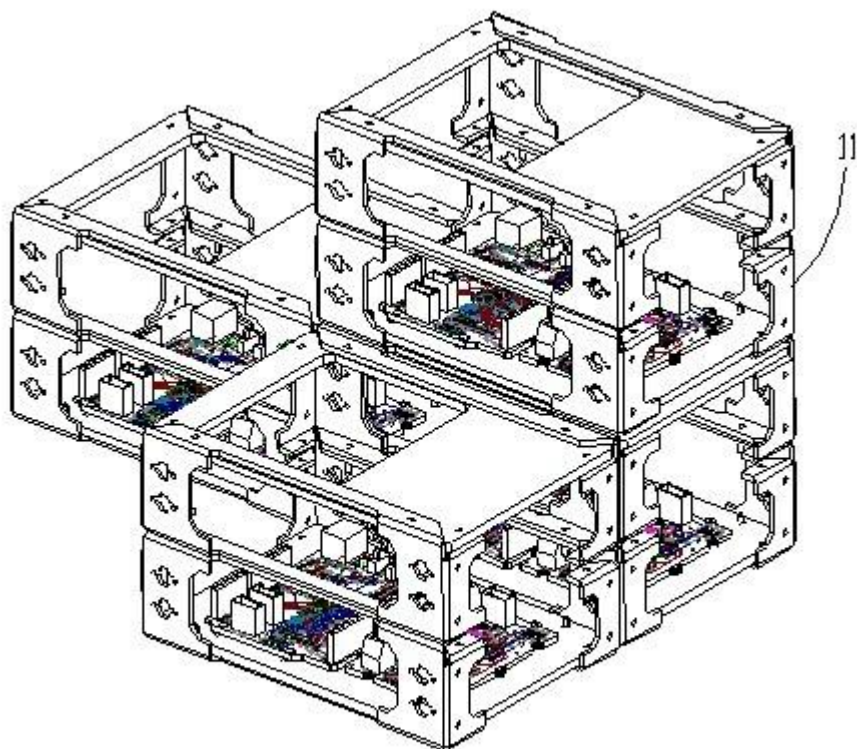
A schematic representation of the composite structure



A schematic representation of the dismantling structure of a application instance

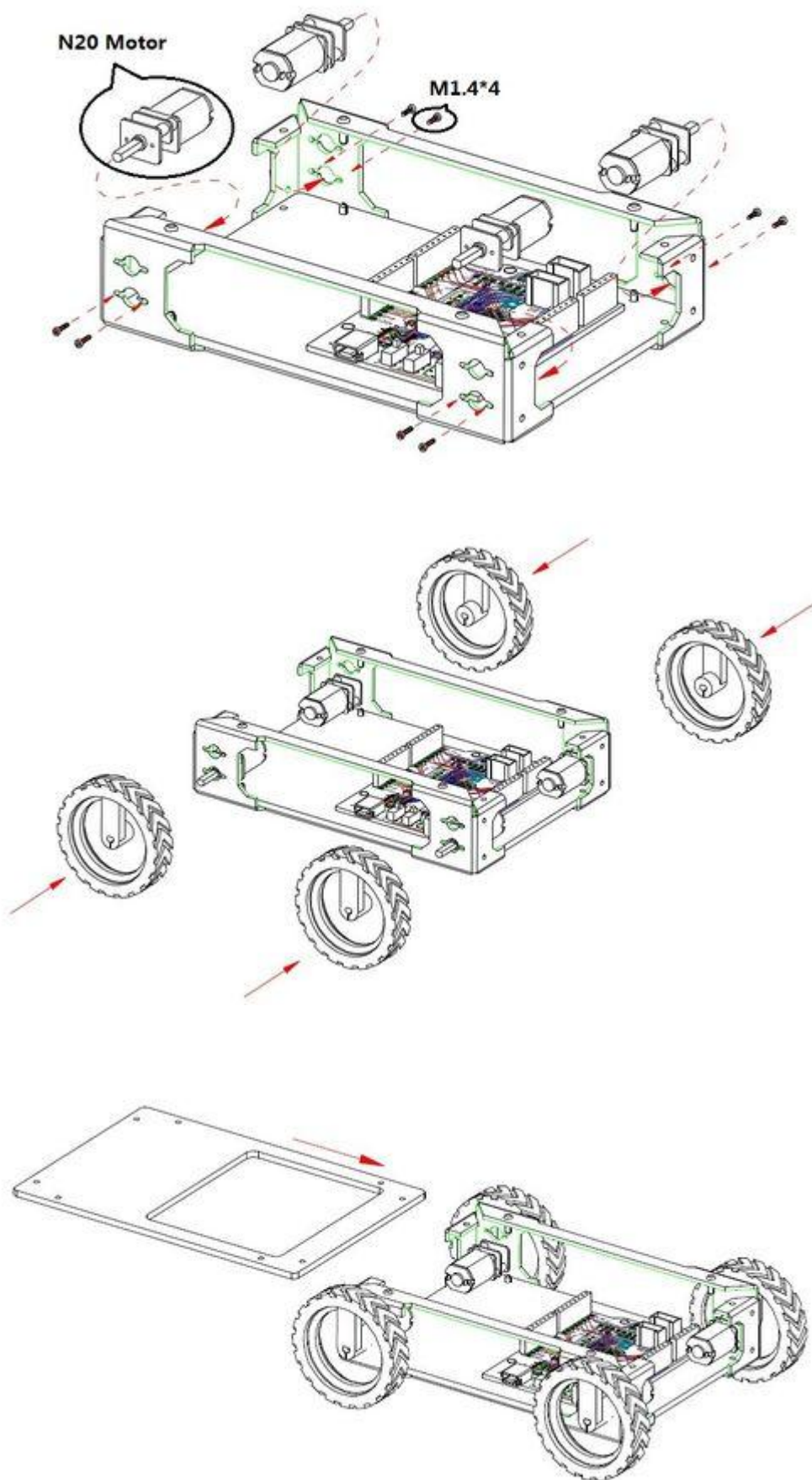


A schematic representation of the composite structure of a application instance



A schematic representation of the composite structure of comprehensive application instance

Expand Usage





Rivet: R2064

