

Cute-3-RE lenses for Luxeon Rebel LEDs

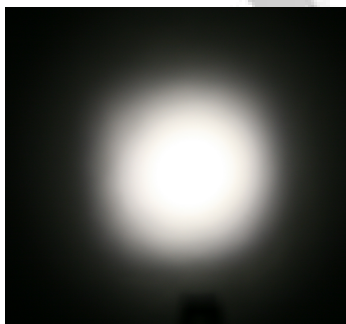
LUXEON



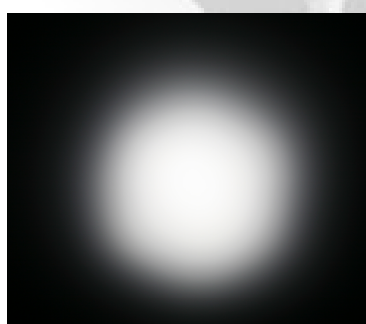
- Specially designed for LUXEON REBEL series of LEDs.
- Special care taken to make a uniform white or warm white illumination. Lenses work well with other colors, too.
- Lens material optical grade PMMA. Allows use of high current and temperature conditions
- No lens holder. Fastening to heat sink with droplets of glue.
- Best available optical efficiency, up to 90%.

LENS TYPES

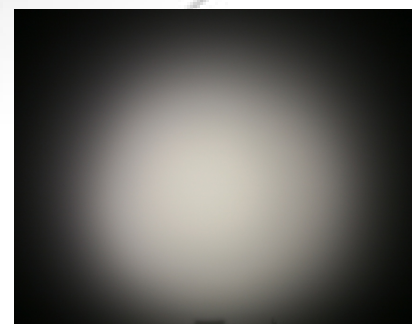
NAME	ORDERING CODE	FWHM Angle
Cute-3 Smooth Spot	C10754_Cute-3-SS-RE	±6°
Cute-3 Medium	C10755_Cute-3-M-RE	±11°
Cute-3 Wide	C10756_Cute-3-W-RE	±19°



C10754_Cute-3-SS-RE



C10755_Cute-3-M-RE

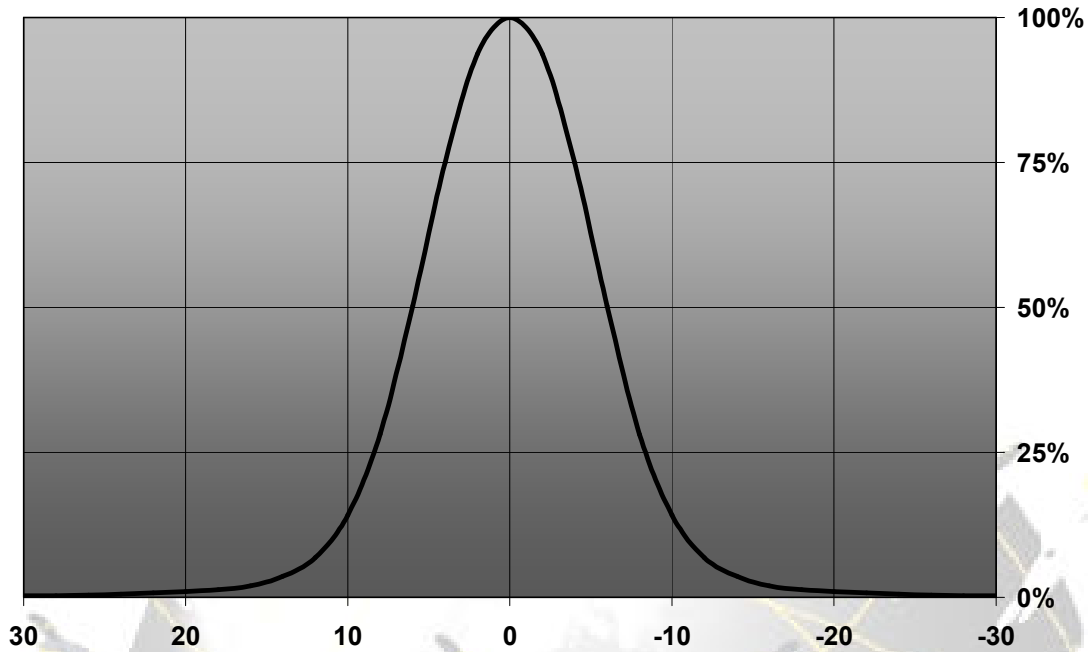


C10756_Cute-3-W-RE

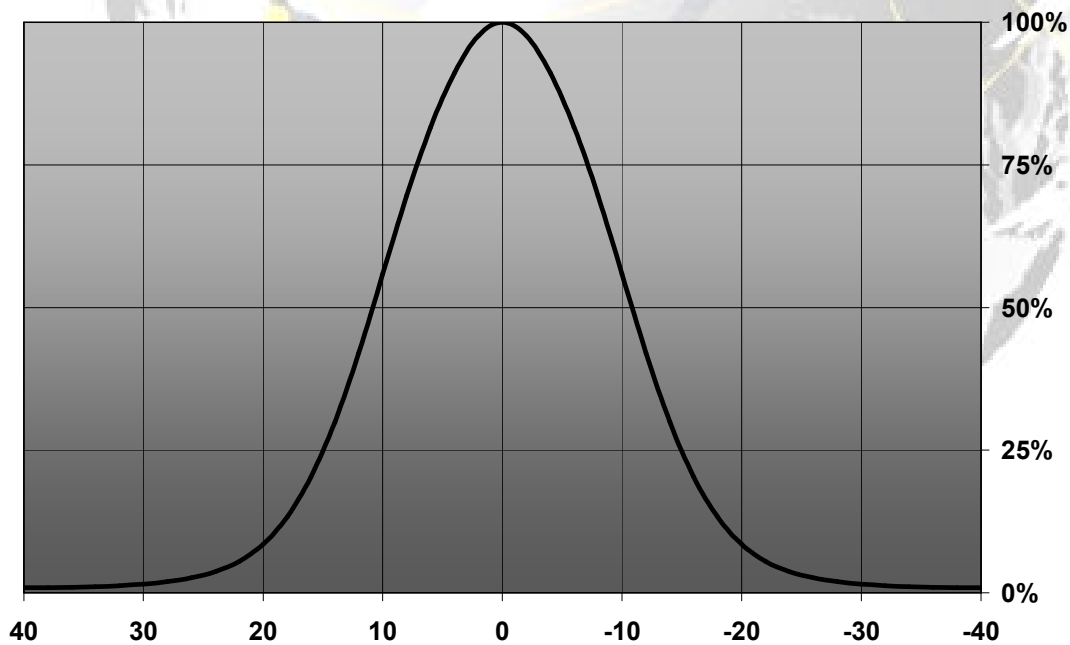
MEASUREMENT DATA

© Ledil Oy - PRELIMINARY - Subject to change without prior notice

Relative Intensity of C10754_Cute-3-ISF-SS-RE

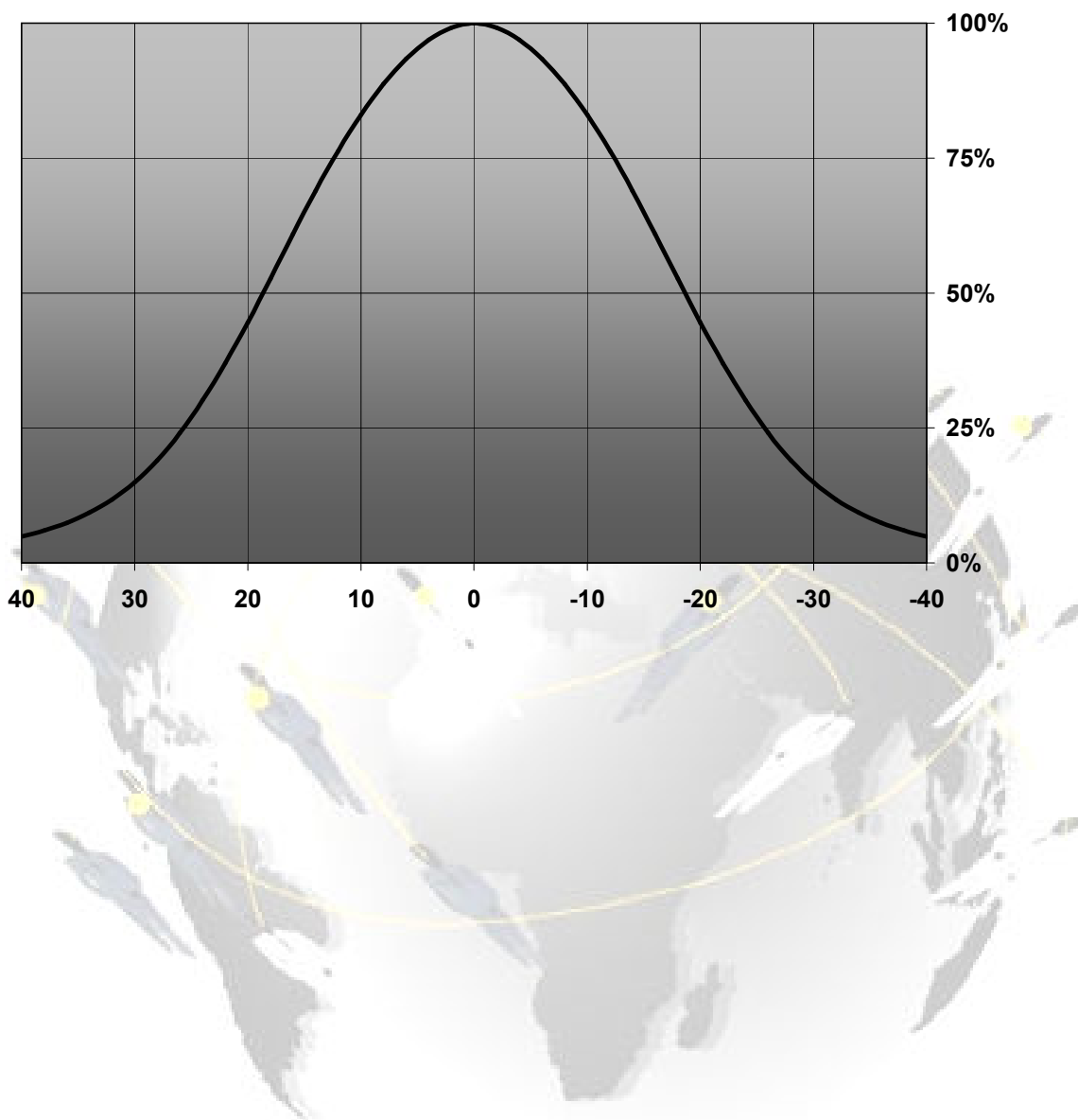


Relative Intensity of C10755_Cute-3-ISF-M RE



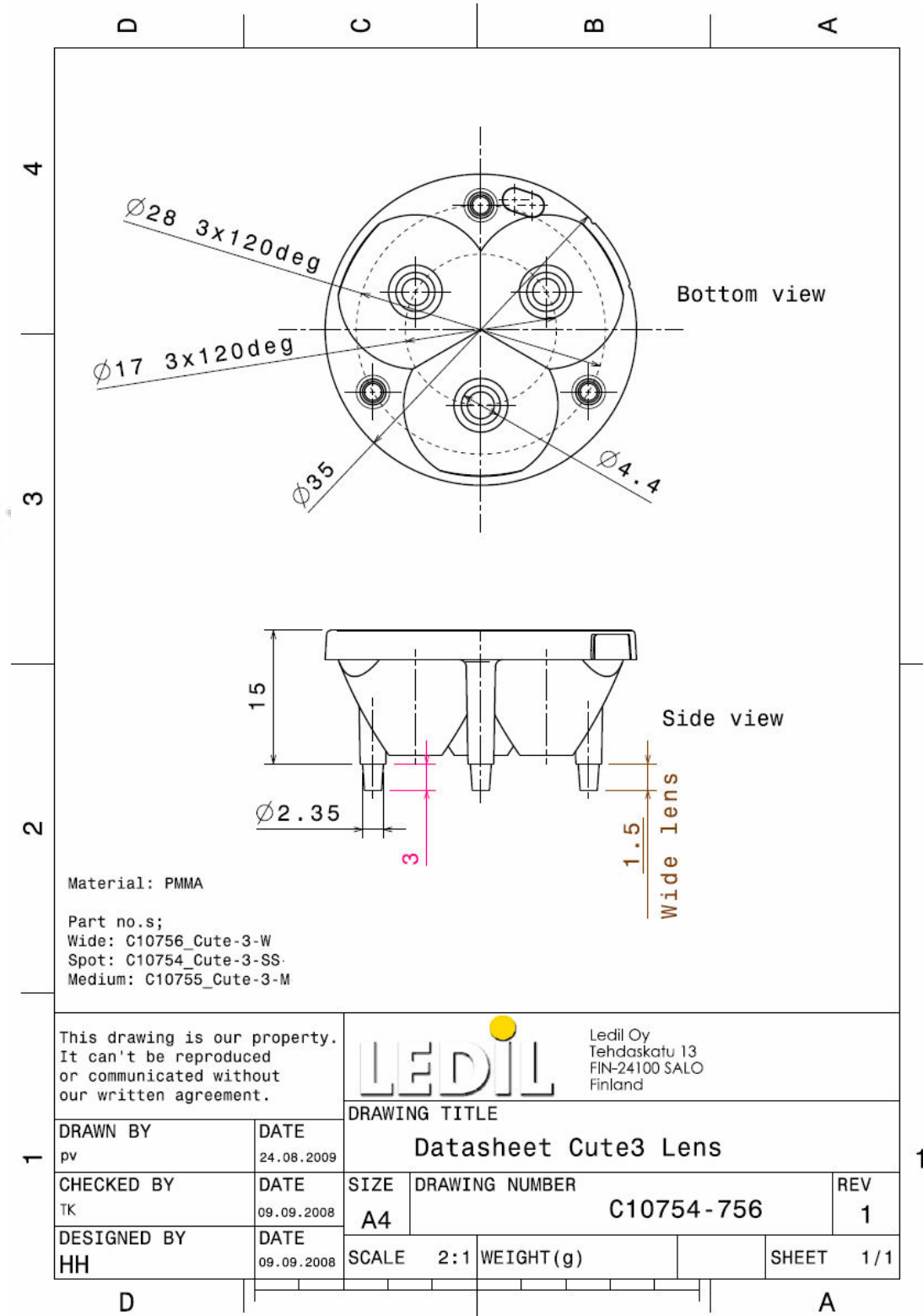
© Ledil Oy – PRELIMINARY - Subject to change without prior notice

Relative Intensity of C10756_Cute-3-ISF-W-RE



© Ledil Oy – PRELIMINARY - Subject to change without prior notice

DRAWINGS



© Ledil Oy - PRELIMINARY - Subject to change without prior notice