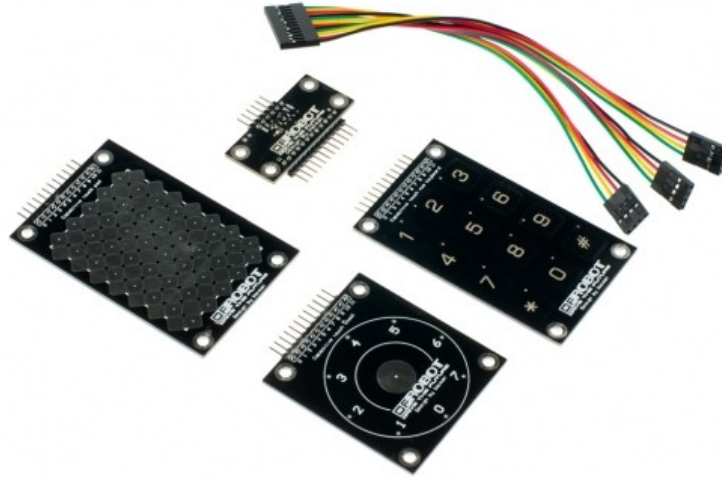


# DFRobot

## Capacitive Touch Kit For Arduino (SKU:DFR0129)



Now, it is time to add a more fancy interactive way to your project. This DFRobot touch kit comes with three types touch sensors. An ipod style wheel touch, a keypad touch which supports backlit and a grid touch pad which can recognize something unique.

This kit utilizes the not very "latest" capacitive touch technology which makes the sensing very sensitive.

The kit is designed to be compatible with Arduino.

### Specification

- Operation Voltage:5V
- Sensor Type:Capacitive
- Touch Chip:MPR121

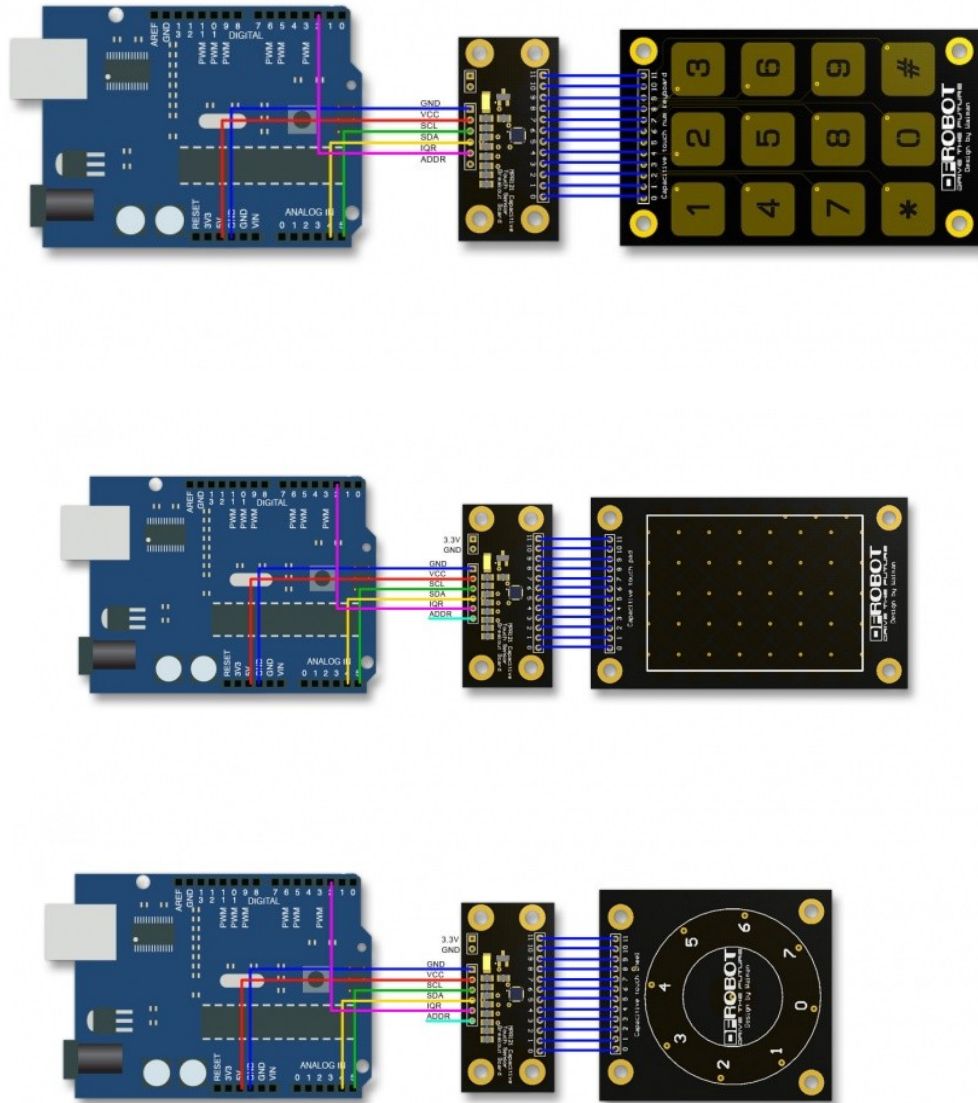
### Documents

- [Wiki Doc](#)
- [Schematics](#)
- [Arduino Library](#)
- [MPR121 Datasheet](#)

### Shipping List

- Control Unit (1 unit)
- Wheel Pad (1 unit)
- Keypad (1 unit)
- Grid Pad (1 unit)
- Cables ( 1 unit)

# Connection Diagram



## Sample Code

```
/*  
www.DFRobot.com  
TouchWheel.pde  
MPR121 WhellPad Example Code  
  
by:Waiman Zhao  
Mail:techsupport@dfrobot.com  
created on: 11/2/14  
  
    SDA -> A4  
    SCL -> A5  
    IRQ -> D2  
*/  
#include <Wire.h>  
#include "mpr121.h"  
  
int pin = 13;  
volatile int state = LOW;  
int key = 0;
```

```
void setup()
{
  Serial.begin(9600);
  Wire.begin();
  mpr121QuickConfig();
  delay(500);
  pinMode(pin, OUTPUT);
  attachInterrupt(0, blink, FALLING);
}

void loop()
{
  digitalWrite(pin, state);
  if(state==HIGH){
    key=wheelKey();
    if(key>=0){
      Serial.print("wheelKey:\t");
      Serial.println(key,DEC);
    }

    key=keypad();
    if(key>=0){
      Serial.print("keypad:\t");
      Serial.println(key,DEC);
    }
    state = LOW;
  }
}

void blink()
{
  state =HIGH;
}
```