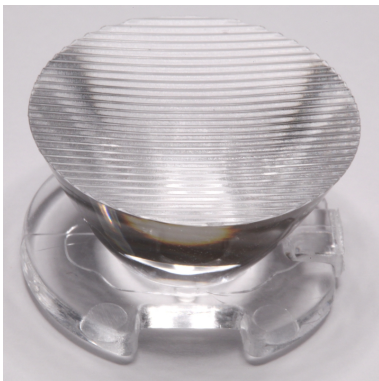


<b>Ordering number</b>	<b>CA12064</b>		
<b>Description</b>	<b>CA12064_Emily-M-Tape-XM</b>		
Family	Emily	FWHM	18 degrees
Type	Lens	Efficiency	-
LED	XM-L	cd/lm	-
Color	Transparent	Gerber File	Available
Diameter	26 mm		
Height	15.1 mm		
Style	Round		
Optic Material	PMMA		
Holder Material	-		
Fastening	Pin, tape		
Status	Ready		



<b>Ordering number</b>	<b>CA12070</b>		
<b>Description</b>	<b>CA12070_Emily-M2-Tape-XM</b>		
Family	Emily	FWHM	28 degrees
Type	Lens	Efficiency	-
LED	XM-L	cd/lm	-
Color	Transparent	Gerber File	Available
Diameter	26 mm		
Height	15.1 mm		
Style	Round		
Optic Material	PMMA		
Holder Material	-		
Fastening	Pin, tape		
Status	Ready		



<b>Ordering number</b>	<b>CA12066</b>		
<b>Description</b>	<b>CA12066_Emily-O-Tape-XM</b>		
Family	Emily	FWHM	47+13 degrees
Type	Lens	Efficiency	-
LED	XM-L	cd/lm	-
Color	Transparent	Gerber File	Available
Diameter	26 mm		
Height	15.1 mm		
Style	Round		
Optic Material	PMMA		
Holder Material	-		
Fastening	Pin, tape		
Status	Ready		



<b>Ordering number</b>	<b>CA12068</b>		
<b>Description</b>	<b>CA12068_Emily-O-90-Tape-XM</b>		
Family	Emily	FWHM	47+13 degrees
Type	Lens	Efficiency	-
LED	XM-L	cd/lm	-
Color	Transparent	Gerber File	Available
Diameter	26 mm		
Height	15.1 mm		
Style	Round		
Optic Material	PMMA		
Holder Material	-		
Fastening	Pin, tape		
Status	Ready		



## PRODUCT DATASHEET Emily-XM series



**NOTE:** The typical divergence will be changed by different color, chip size and chip position tolerance. The typical total divergence is the full angle measured where the luminous intensity is half of the peak value.



## PRODUCT DATASHEET Emily-XM series



### GENERAL INFORMATION

- Product series especially designed & optimized for XM-L series of LEDs.
- Special care taken to make light distribution as uniform as possible.
- Lens material optical grade PMMA with high UV and temperature resistance (105 degrees of Celcius / 220 degrees of Fahrenheit). Allows use of high current and temperature conditions.

Please find more information about used material from below:

[http://ledil.fi/sites/default/files/Documents/Technical/Material/PMMA%20N%20UL94\\_Yellow%20Card.pdf](http://ledil.fi/sites/default/files/Documents/Technical/Material/PMMA%20N%20UL94_Yellow%20Card.pdf)

<http://ledil.fi/sites/default/files/Documents/Technical/Material/PMMA%20N%20PLEXIGLAS-Datasheet.pdf>

- Fastening to heat sink with a PU foam adhesive tape of automotive grade. Please find fastening details by clicking link: [http://www.ledil.com/datasheets/DataSheet\\_TAPE.pdf](http://www.ledil.com/datasheets/DataSheet_TAPE.pdf)

**NOTE 1: We advise customer to ensure the suitability and sufficiency of the bond in the end product. For example, mechanical stress, vibration and holes on the surface of the circuit board weaken the strength of the tape.**

**NOTE 2: Assembly to the surface must be made straight, so the tape bonds constant and balanced with fastening surface. Slanted assembly might cause unbalanced bond to the surface. All surfaces where tape is applied must be clean, dry and free from grease and dirt.**

**If cleaning of PCB surfaces is needed, please follow strictly the cleaning instructions of your LED manufacturer - this is important as cleaning shall under no circumstances damage LEDs or other electronics components on the PCB.**

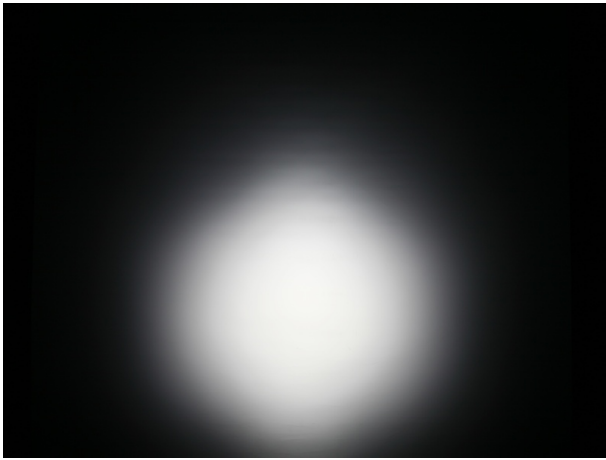
**Further note that optical components shall not be cleaned with any chemicals - only micro fiber cloth may be used to remove fingerprints or other traces from handling.**



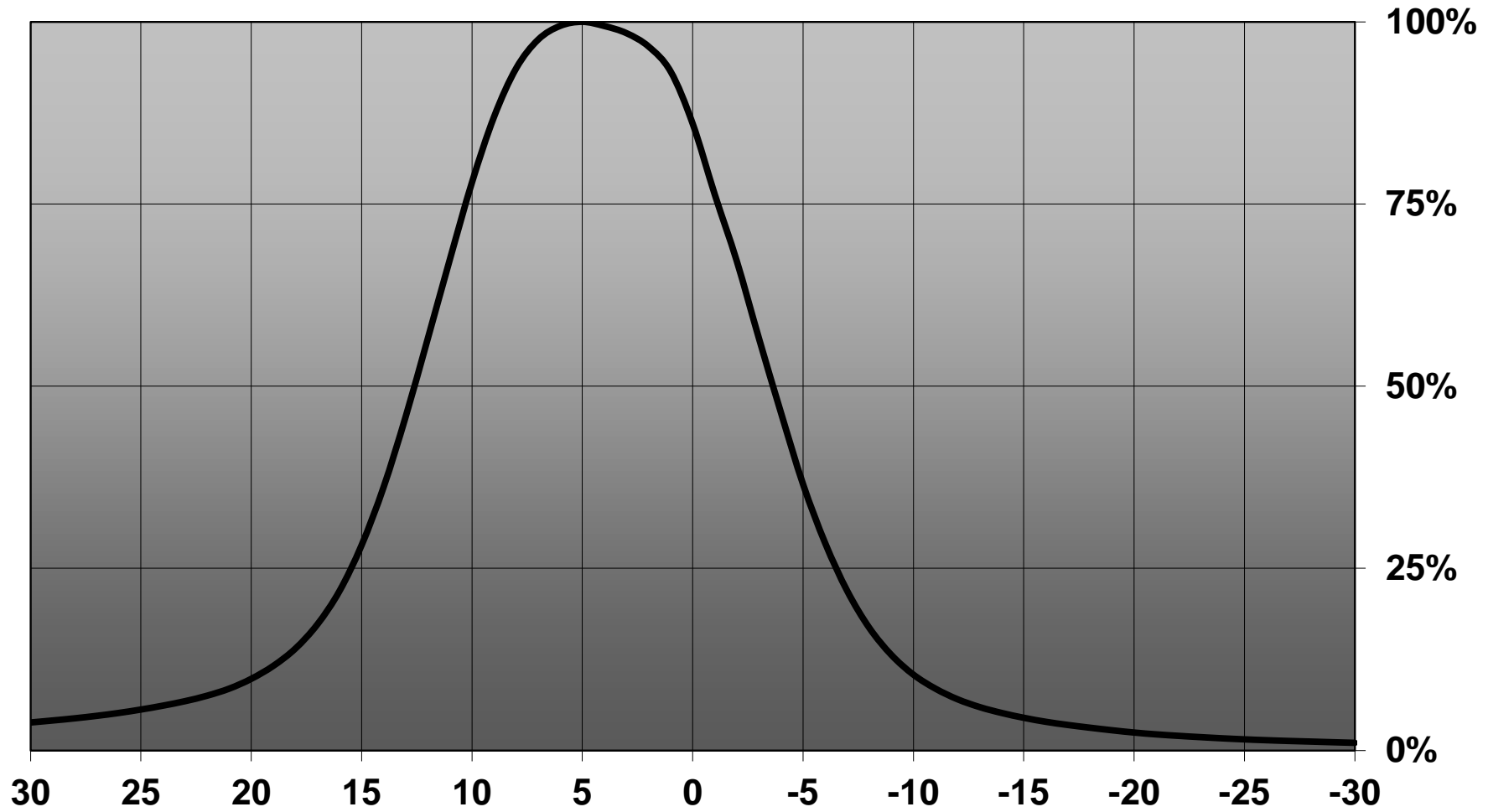
**PRODUCT DATASHEET**  
**Emily-XM series**



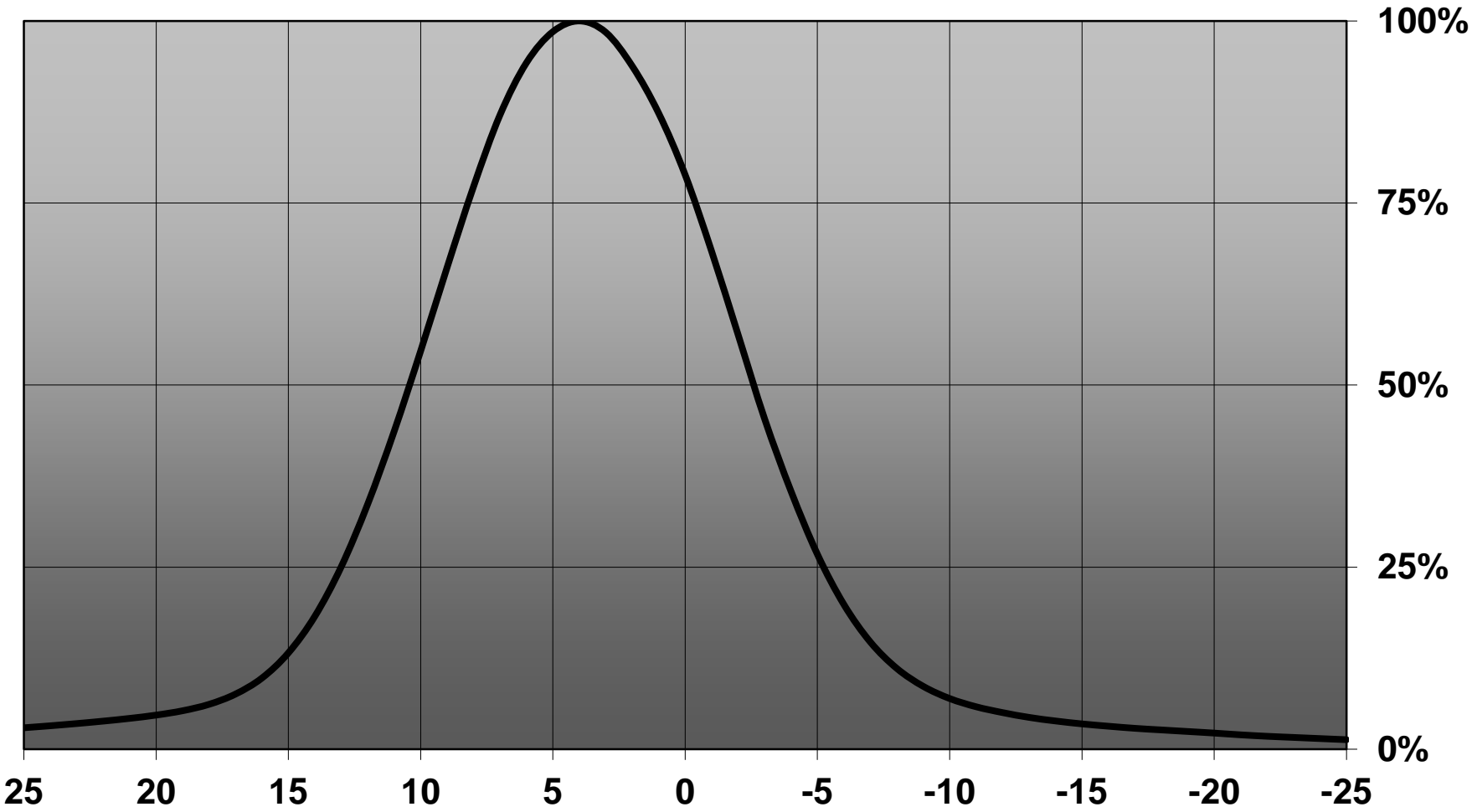
**CA12070**



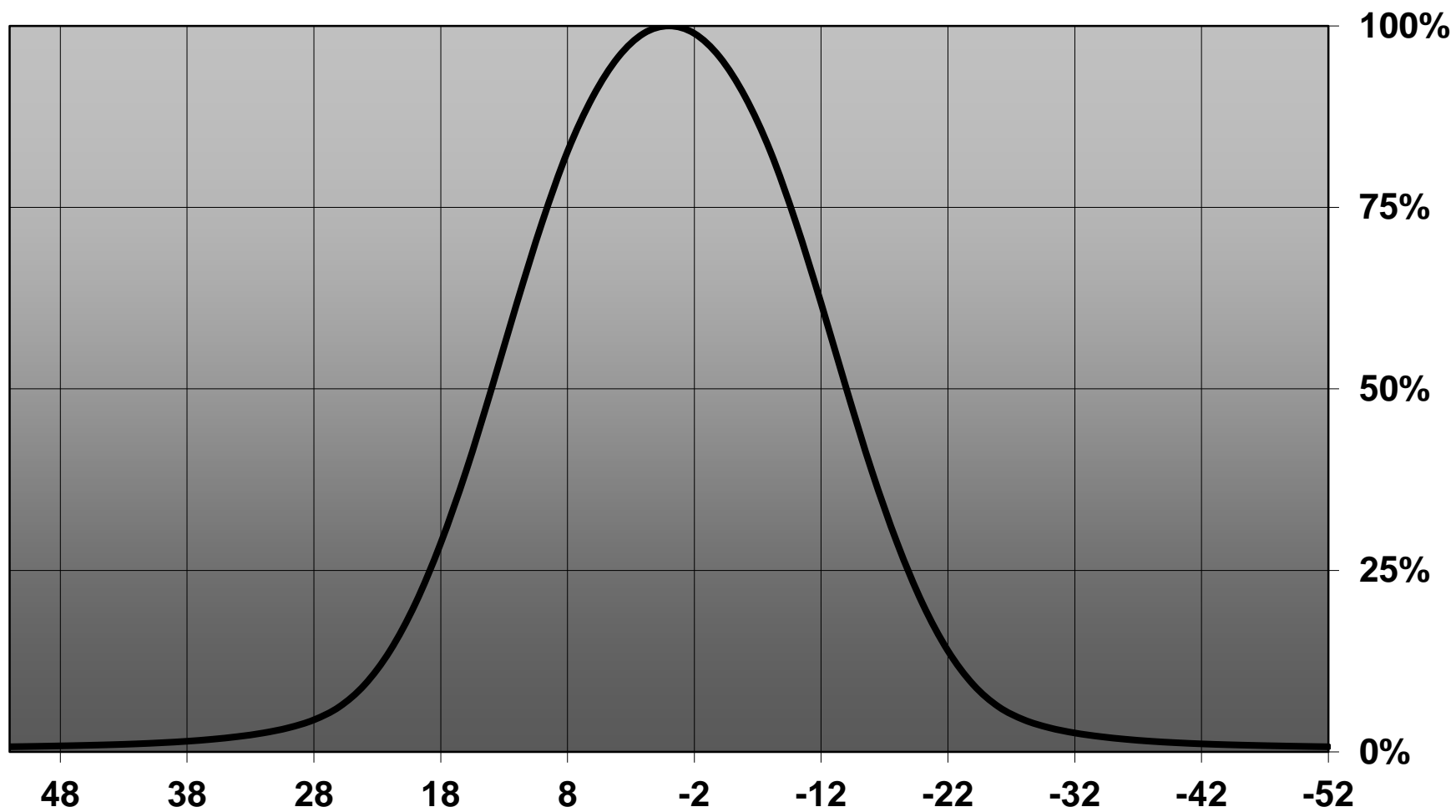
**Relative intensity of CA11998\_Emily-SS-was-Tape-XM-EZW**



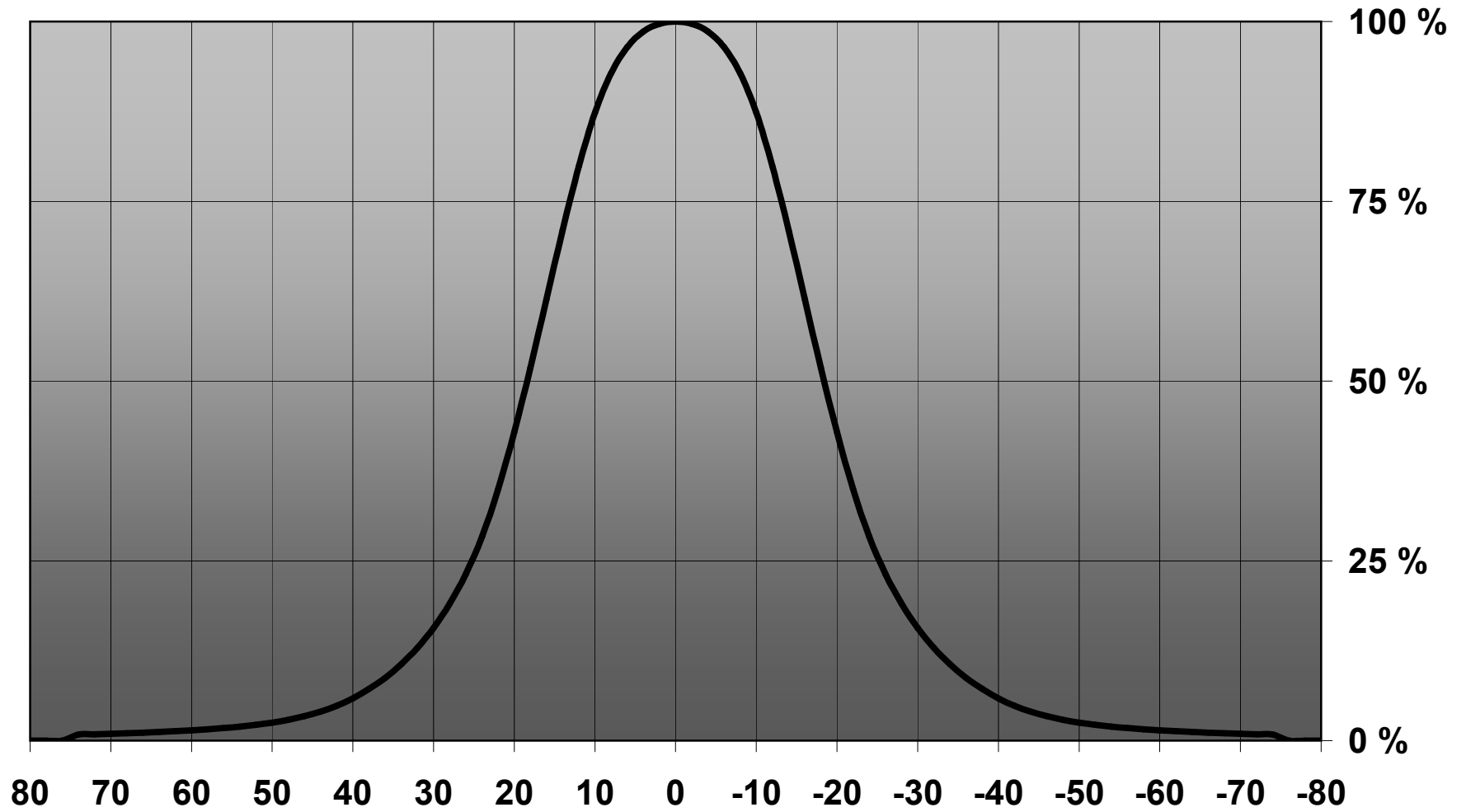
Relative intensity of CA11998\_Emily-SS-was-Tape-XM



Relative intensity of CA12070\_Emily-M2-Tape-XM



# Relative intensity of C11933\_Emily-W-XM-L





D

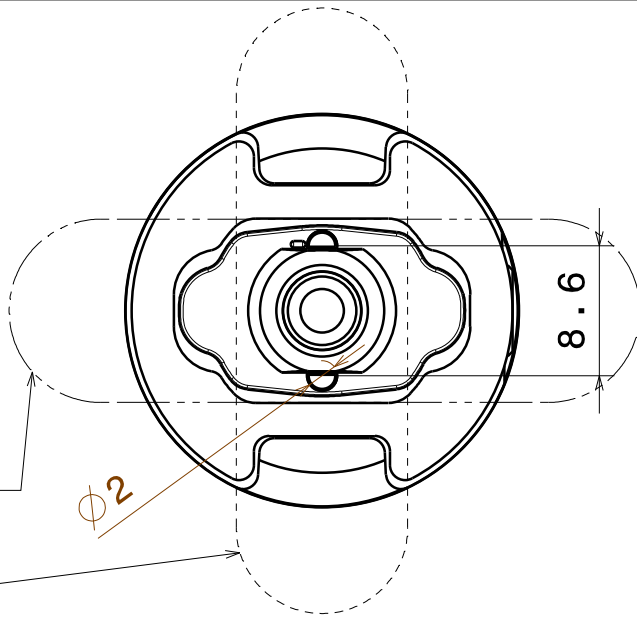
C

B

A

4

4



Bottom view  
Scale: 2:1

Beam direction Emily-0-90

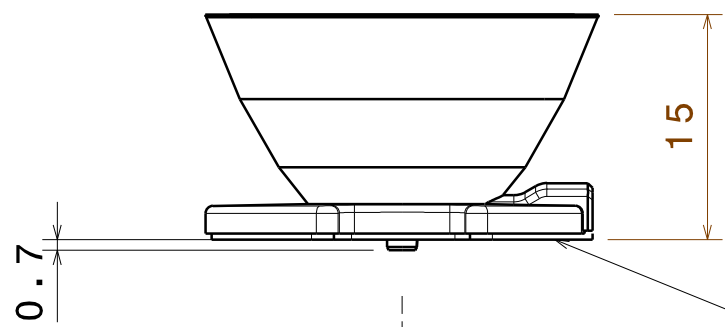
Beam direction Emily-0

Ø2

8.6

3

3



Front view  
Scale: 2:1

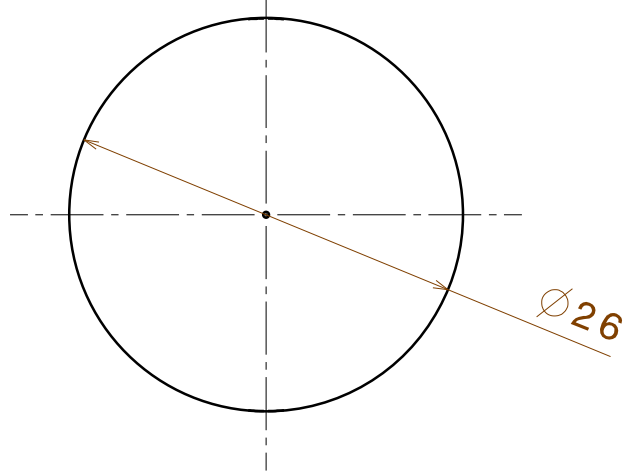
tape

0.7

15

2

2



Top view  
Scale: 2:1

Ø26

Material: PMMA

- Part no.s:
- CA12062\_Emily-SS-Tape-XM
  - CA12064\_Emily-M-Tape-XM
  - CA12066\_Emily-0-Tape-XM
  - CA12068\_Emily-0-90-Tape-XM
  - CA12070\_Emily-M2-Tape-XM

This drawing is our property.  
It can't be reproduced  
or communicated without  
our written agreement.



Ledil Oy  
Tehdaskatu 13  
FIN-24100 SALO  
Finland

DRAWING TITLE

Datasheet Emily-XM Series Lens

DRAWN BY  
ah

DATE  
18.05.2011

CHECKED BY  
tk

DATE  
18.02.2010

SIZE  
A4

DRAWING NUMBER

REV  
1

DESIGNED BY  
hh

DATE  
18.02.2010

SCALE 2:1

WEIGHT (g)

SHEET 1/1

D

A

1

1