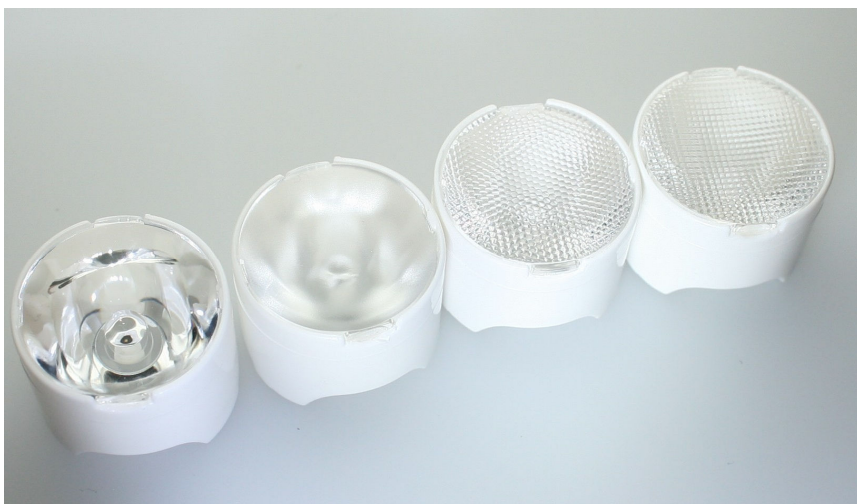


## LC1 LENSES FOR CREE XR-E LEDs



- Specially designed for Cree XLAMP XR-E series of LEDs.
- Special care taken to make a uniform white or warm white illumination. Lenses work well with other colors, too.
- Lens material optical grade PMMA. Allows use of high current and temperature conditions. Holder material ABS.
- Best available optical efficiency, more than 90%, with an extremely good cutoff of light
- Fastening of holden to PCB with appropriate adhesive, e.c. epoxy or polyurethane based. NOTE: DO NOT USE SUPERGLUE.

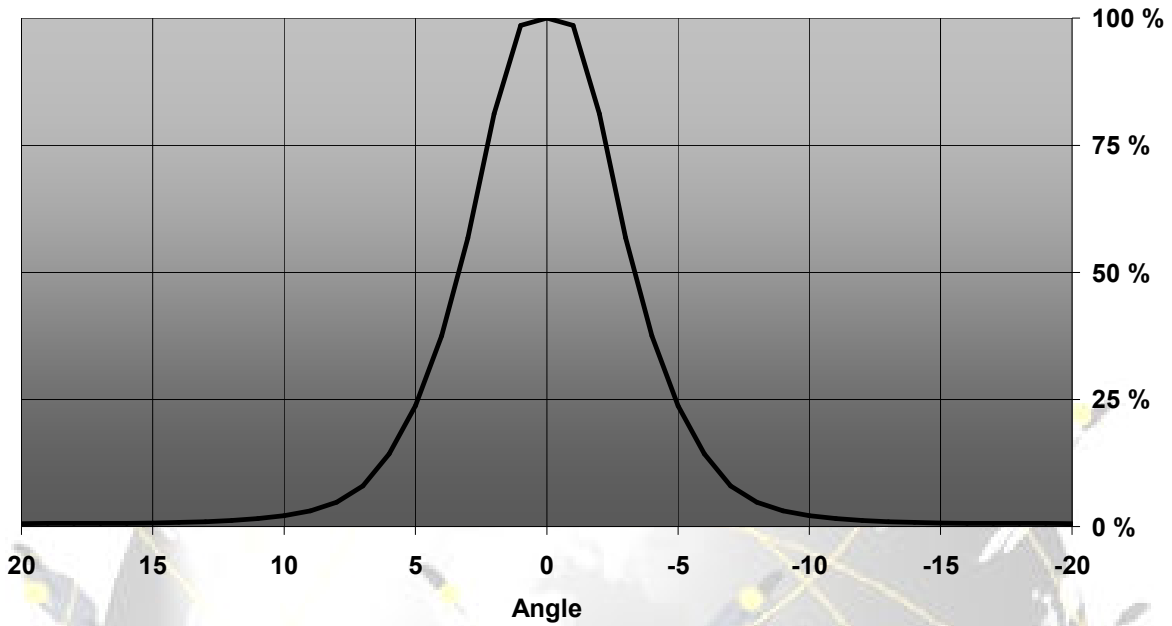
## LENS TYPES

NAME	ORDERING CODE	FWHM Angle
LC1 REAL SPOT	FA10808 LC1-RS	±3°
LC1 DIFFUSER	FA10810 LC1-D	±5°
LC1 MEDIUM	FA10807 LC1-M	±14°
LC1 OVAL	FA11104 LC1-O-90	±N/A°
LC1 RECTANGULAR	FA10809 LC1-REC	±21° x ±11°
LC1 WIDE	FA10607 LC1-W	±31.5°

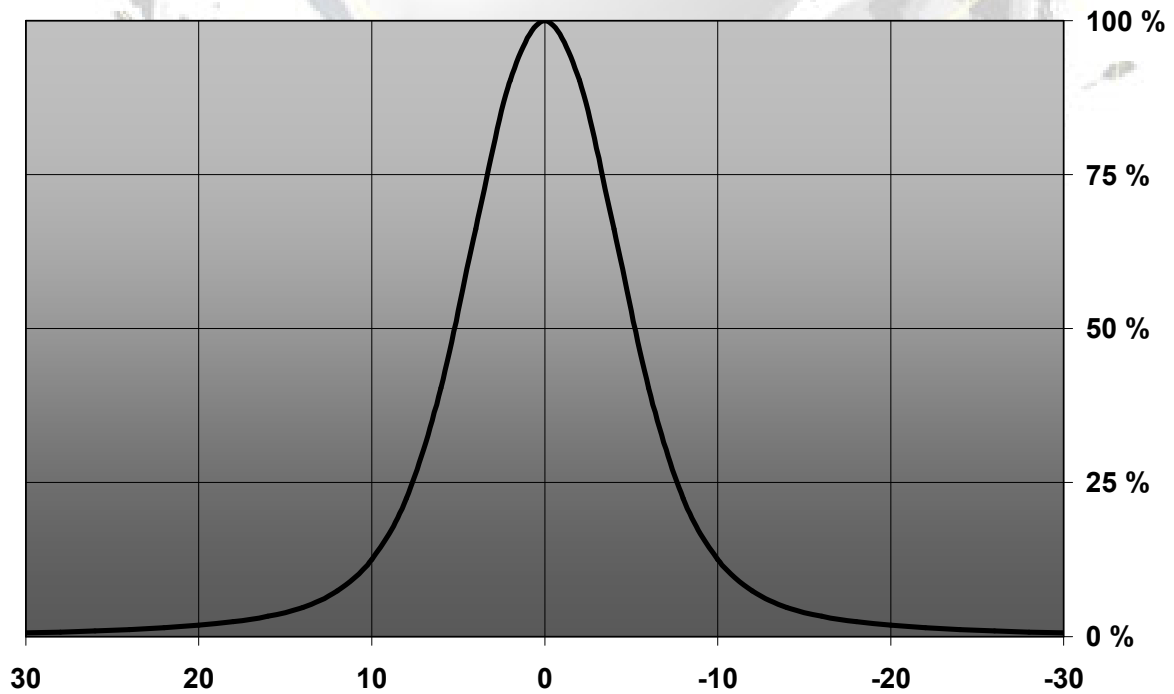
© Ledil Oy – PRELIMINARY - Subject to change without prior notice

## MEASUREMENT DATA

Relative Intensity LC1-RS

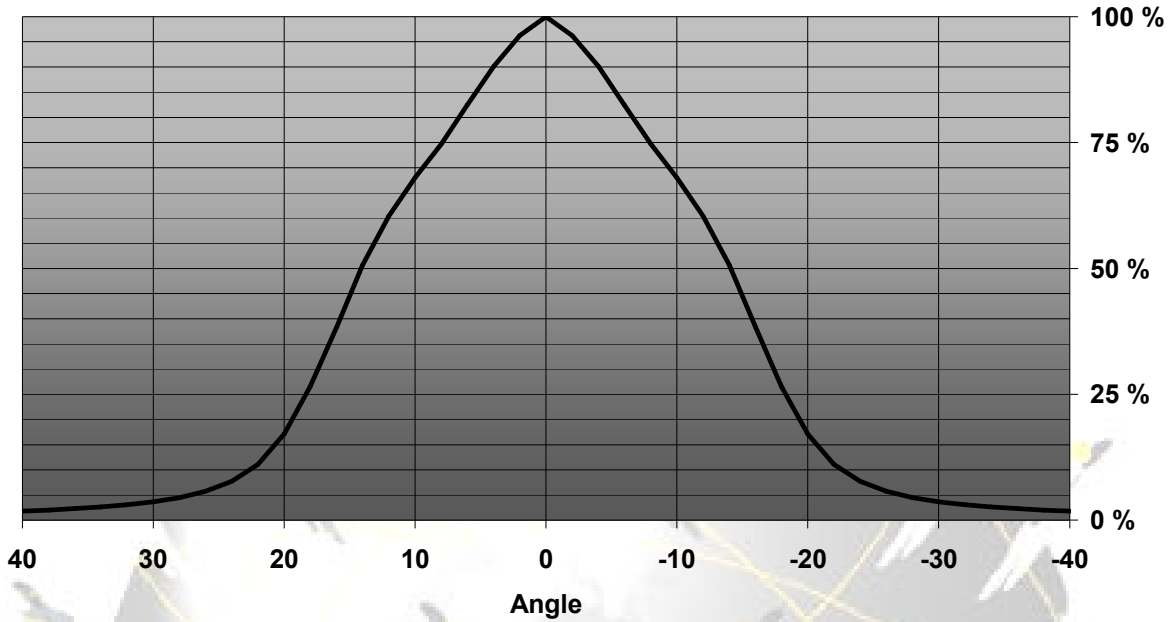


Relative Intensity of FA10810\_LC1-D

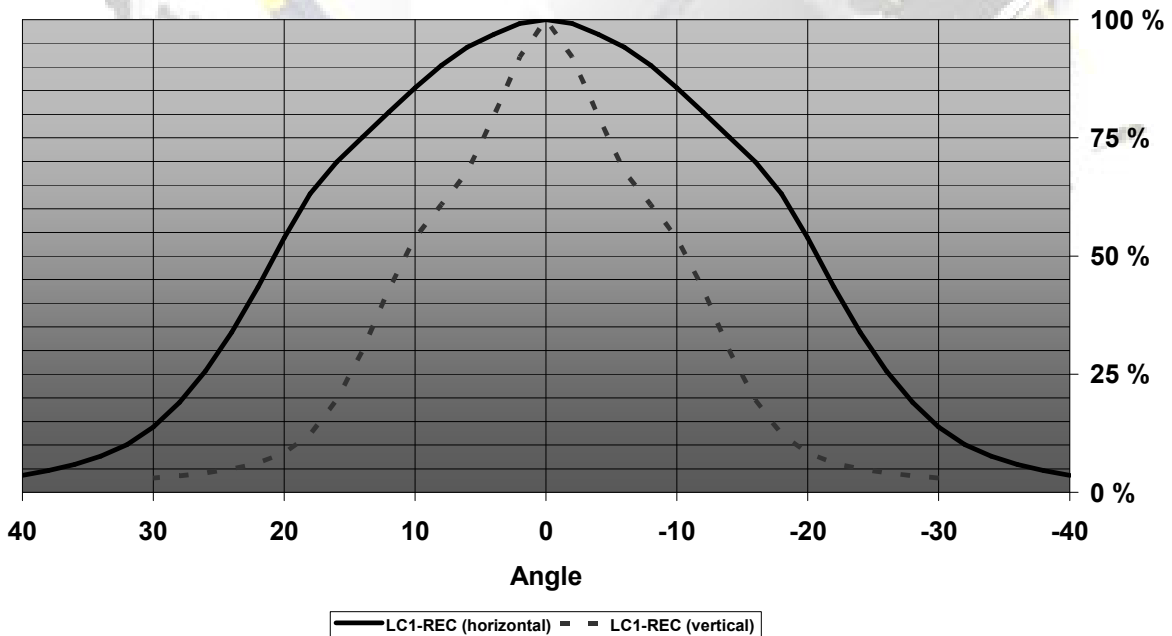


© Ledil Oy – PRELIMINARY - Subject to change without prior notice

Relative Intensity of LC1-M

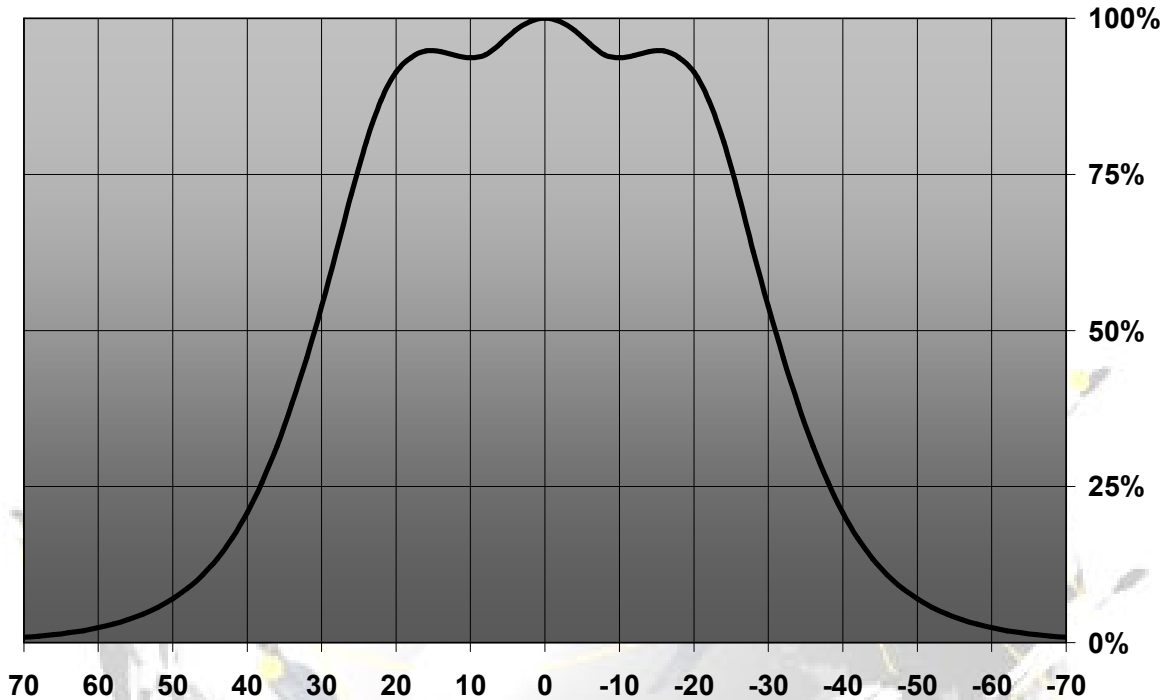


Relative Intensity of LC1-REC



EULUMDAT & IES FILES AVAILABLE BY REQUEST

© Ledil Oy – PRELIMINARY - Subject to change without prior notice

**Relative Intensity of FA10607\_LC1-W**

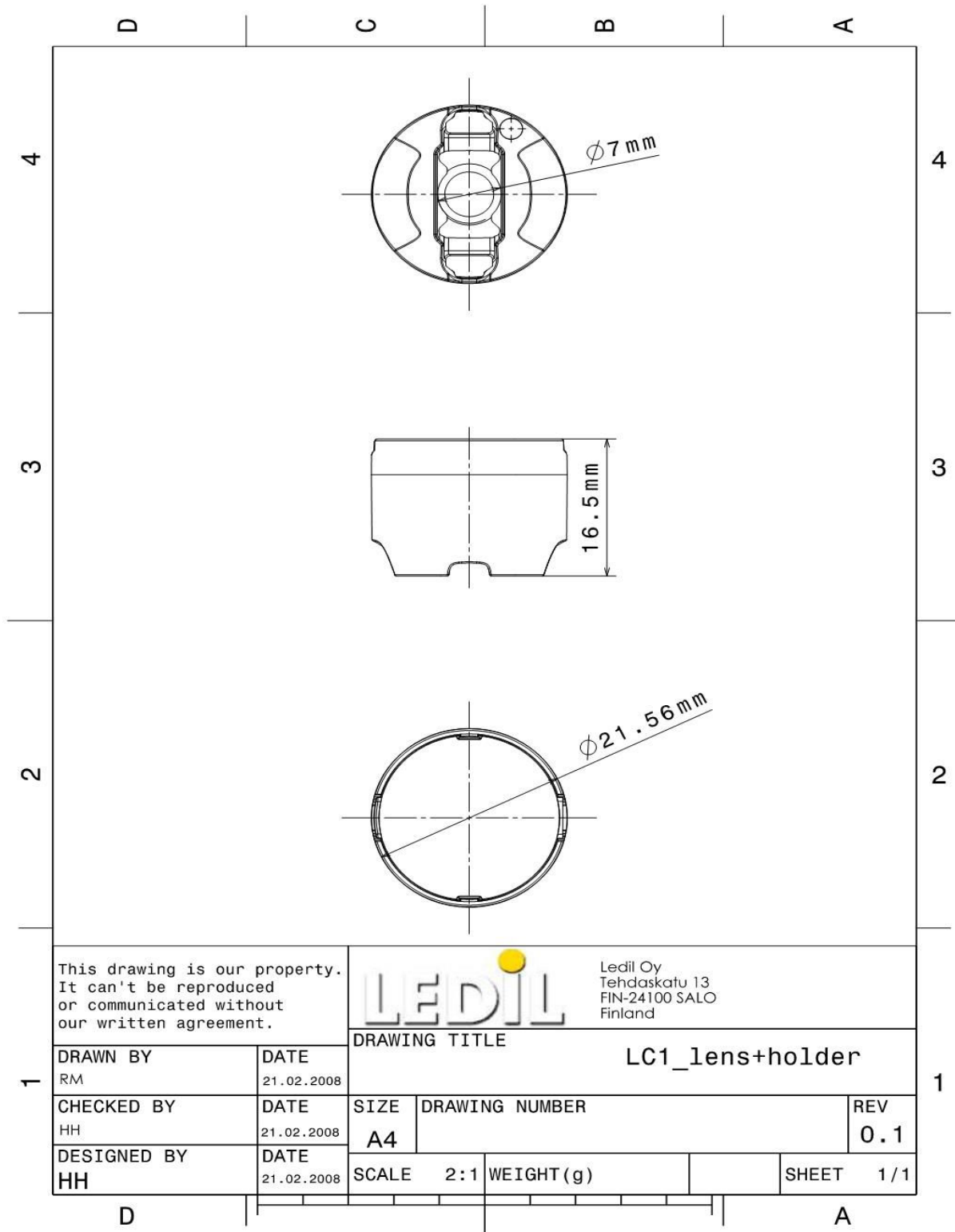
© Ledil Oy – PRELIMINARY - Subject to change without prior notice

Ledil Oy  
Tehdaskatu 13  
FIN-24100 SALO, Finland

[www.ledil.com](http://www.ledil.com)  
email: [ledil@ledil.com](mailto:ledil@ledil.com)  
FAX: +358-2-733 8001

2009-11-25

## DRAWINGS



© Ledil Oy – PRELIMINARY - Subject to change without prior notice