

<b>MODEL NO. : LCD-705</b>
----------------------------

 **SPECIFICATION** 

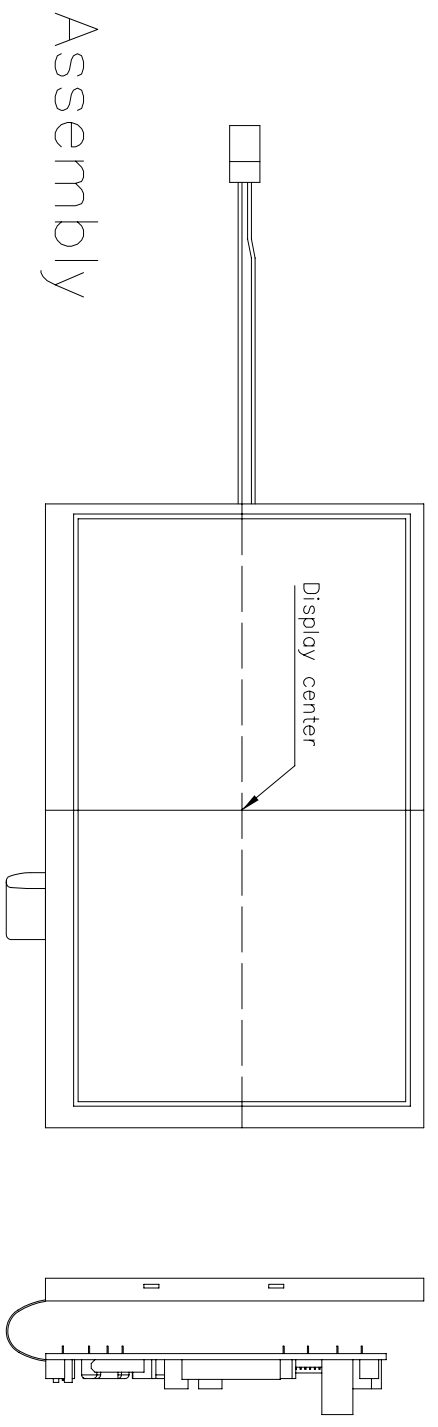
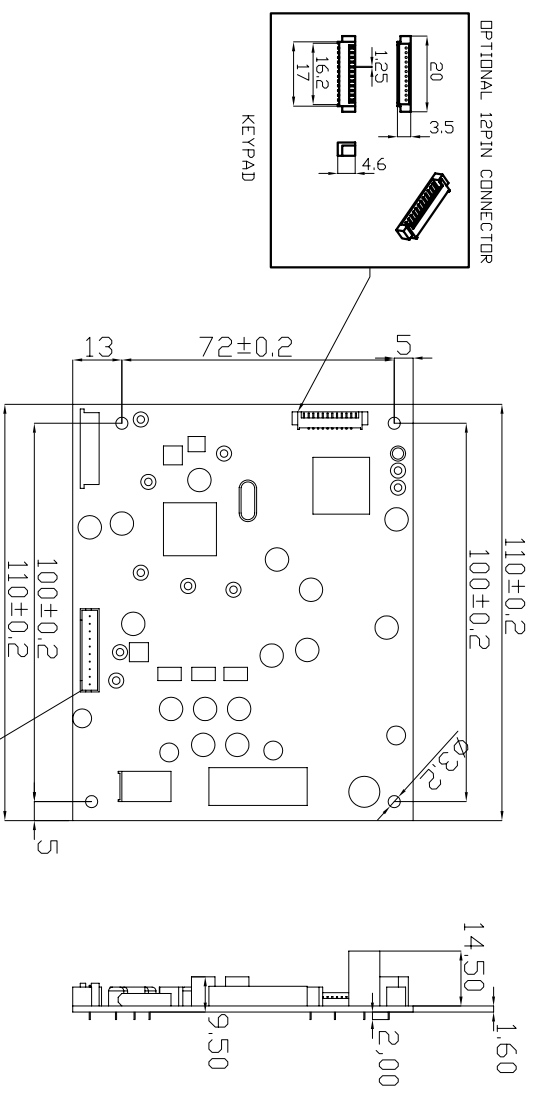
<p>◆ DISPLAY SCREEN</p> <p>◆ VIDEO SYSTEM</p> <p style="margin-left: 20px;">NTSC      <math>f_H</math> : 15.75 KHz  <math>f_V</math> : 60 Hz  <math>f_C</math> : 3.58 MHz</p> <p>◆ POWER SOURCE</p> <p>◆ POWER CONSUMPTION</p> <p>◆ OPERATING TEMPERATURE</p> <p>◆ STORAGE TEMPERATURE</p> <p>◆ LCD SCREEN</p> <p>◆ DRIVER BOARD</p> <p>◆ BRIGHTNESS</p> <p>◆ CONTRAST</p> <p>◆ VIEWING ANGLE</p> <p>◆ WEIGHT</p>	<p>SCREEN SIZE      7" <b>LCD SCREEN</b></p> <p>ACTIVE AREA 154.08(W) x 86.58(V)mm</p> <p>ELEMENT          COLOR TFT LCD</p> <p>RESOLUTION      1440(W)x234(H)</p> <p>DOT PITCH        0.107(W) x 0.370 (H)</p> <p>NTSC &amp; PAL      Dual System</p> <p><b>PAL</b>              <math>f_H</math> : 15.625 KHz  <math>f_V</math> : 50 Hz  <math>f_C</math> : 4.43 MHz</p> <p>DC 12 V</p> <p>417 mA   5W Max.</p> <p>30°C ~ 85°C</p> <p>-40°C ~ 95°C</p> <p>164.9 (W)x100.0(H)x5.7(D) (mm)</p> <p>100.0(W) x 72.0 (H) X 14.5 (D)</p> <p>500 nit</p> <p>300:1</p> <p>Vertical + 10° / - 30°  Horizontal ± 45° .</p> <p>160 ± 10 g</p>
---	--

 **FEATURES** 

1. Video Input
2. LEFT & RIGHT, UP/DOWN Reverse Image
3. Low Power Consumption.
4. 12V Drive for handheld , Battery operated items

1	2	3	4	5	6	7	8
REVISION							
ISSUE ZONE	DESCRIPTION	DATE	REVISER				

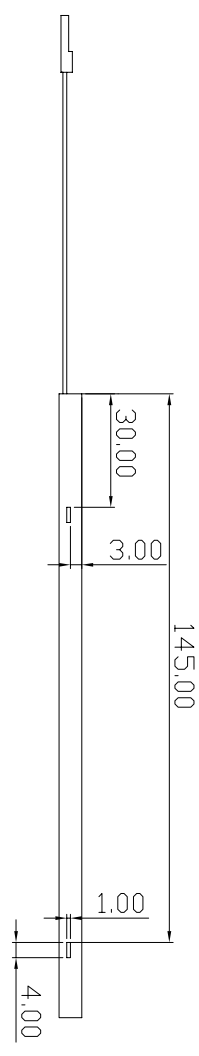
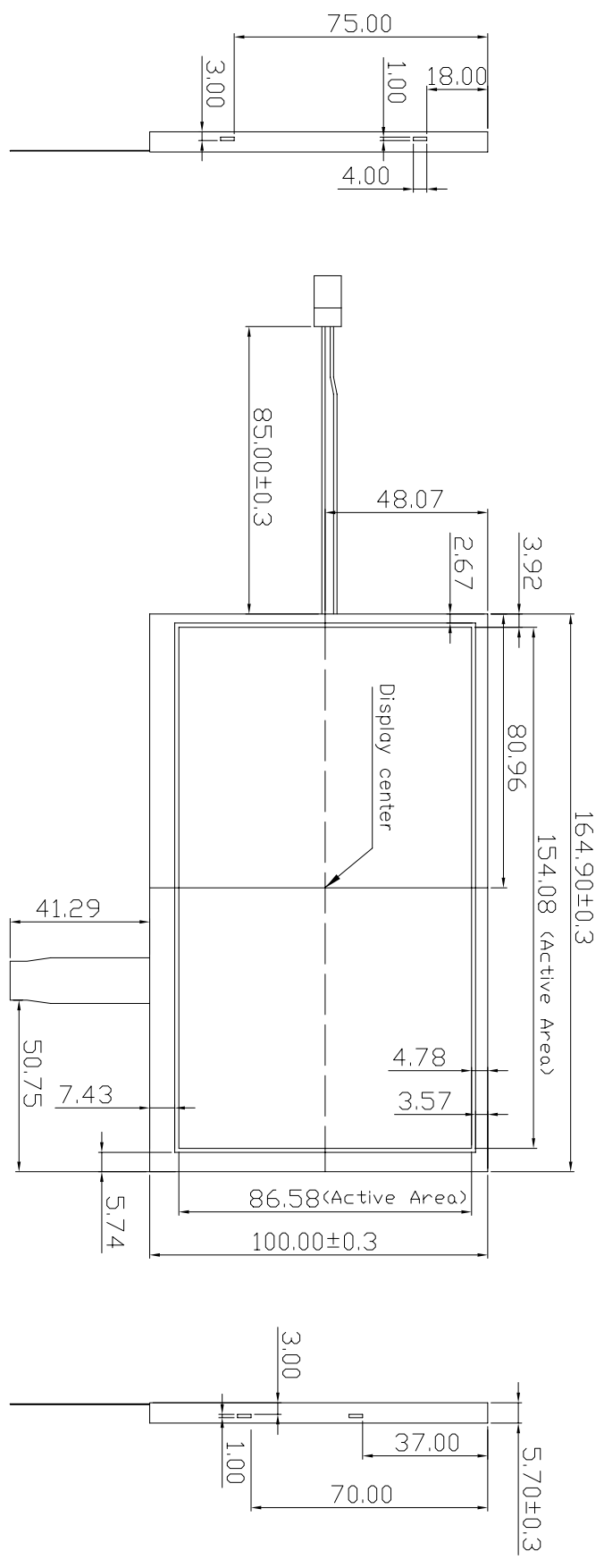
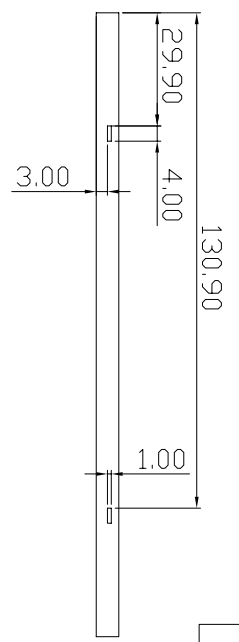
# Driver Board



VIEWTEK®		MODEL NO.	PARTS NO.	DWG. DATE	MATERIAL	UNIT	PARTS NAME	
LEE MING INDUSTRIAL CO., LTD		LCD-705		2006/07/26		mm	PCB&Assembly	
DESIGN		CHECKED	APPROVED	REV. DATE	SCALE	REV	FILE NO.	DRAWING NO.
					FREE			

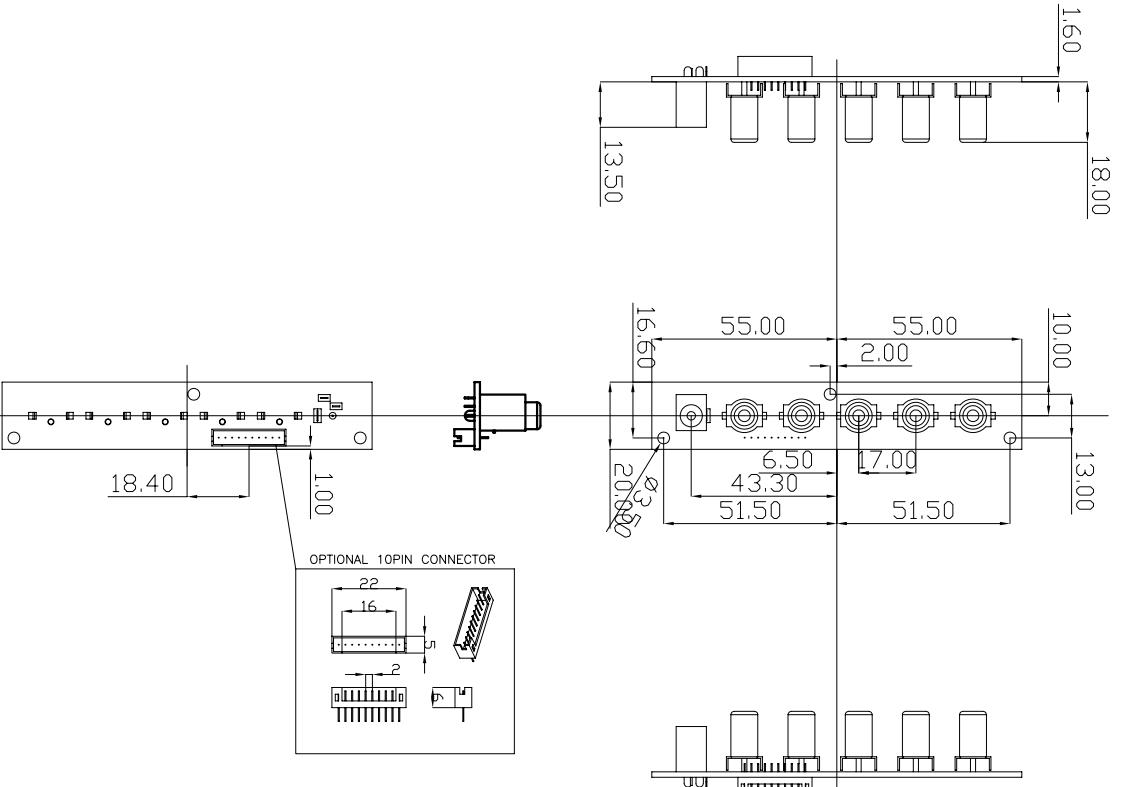
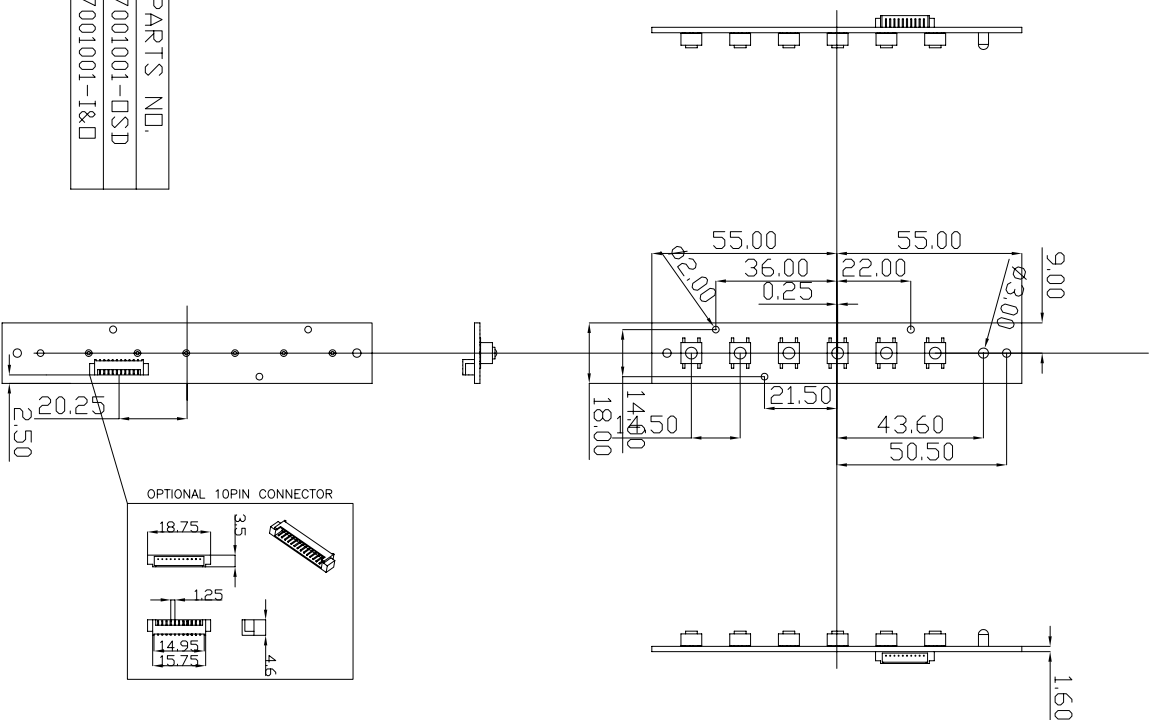
REVISION			
ISSUE ZONE	DESCRIPTION	DATE	REVISER

# LCD Screen

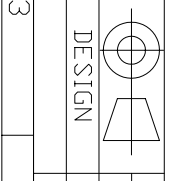


VIEWTEK®		DESIGN		MODEL NO.	PARTS NO.	DWG. DATE	MATERIAL	UNIT	PARTS NAME	
LEE MING INDUSTRIAL CO., LTD		DESIGN		LCD-705	0700107-Pn1	2006/07/26	SCALE	mm	7" PANEL	
				CHECKED	APPROVED	REV. DATE	FREE	REV	FILE NO.	DRAWING NO.
1	2	3	4	5	6	7	8			

REVISION			
1	2	3	4
ISSUE ZONE	DESCRIPTION	DATE	REVISER



VIEWTEK®  
LEE MING INDUSTRIAL CO., LTD



MODEL NO.  
LCD-705W

PARTS NO.  
APPROVED

DWG. DATE  
2006/07/26

MATERIAL  
SCALE  
FREE

UNIT  
mm

PARTS NAME  
KEY&AV-ID

REV  
FILE NO.  
DRAWING NO.

1 2 3 4 5 6 7 8