

## LXP LENSES FOR CREE XP-E LEDs



- Specially designed for Cree XLAMP XP-E series of LEDs.
- Special care taken to make a uniform white or warm white illumination. Lenses work well with other colors, too.
- Lens material optical grade PMMA. Allows use of high current and temperature conditions
- Best available optical efficiency, more than 90%, with an extremely good cutoff of light
- Fastening to heat sink with a PU foam **adhesive tape** of automotive grade

### LENS TYPES

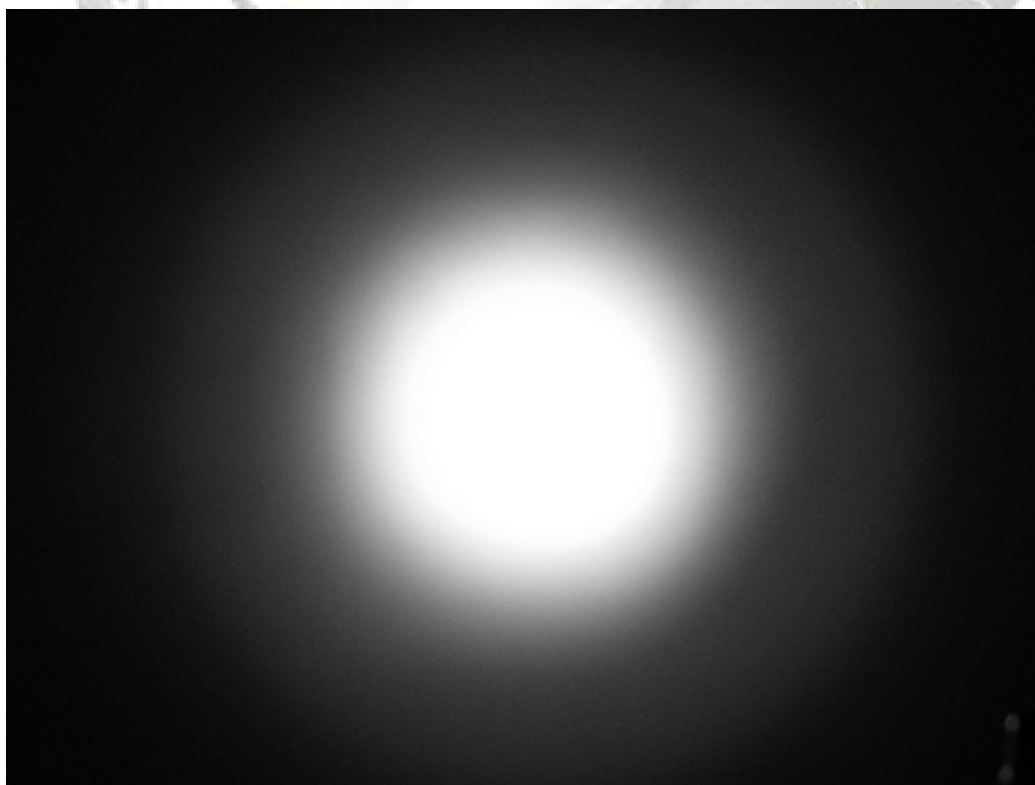
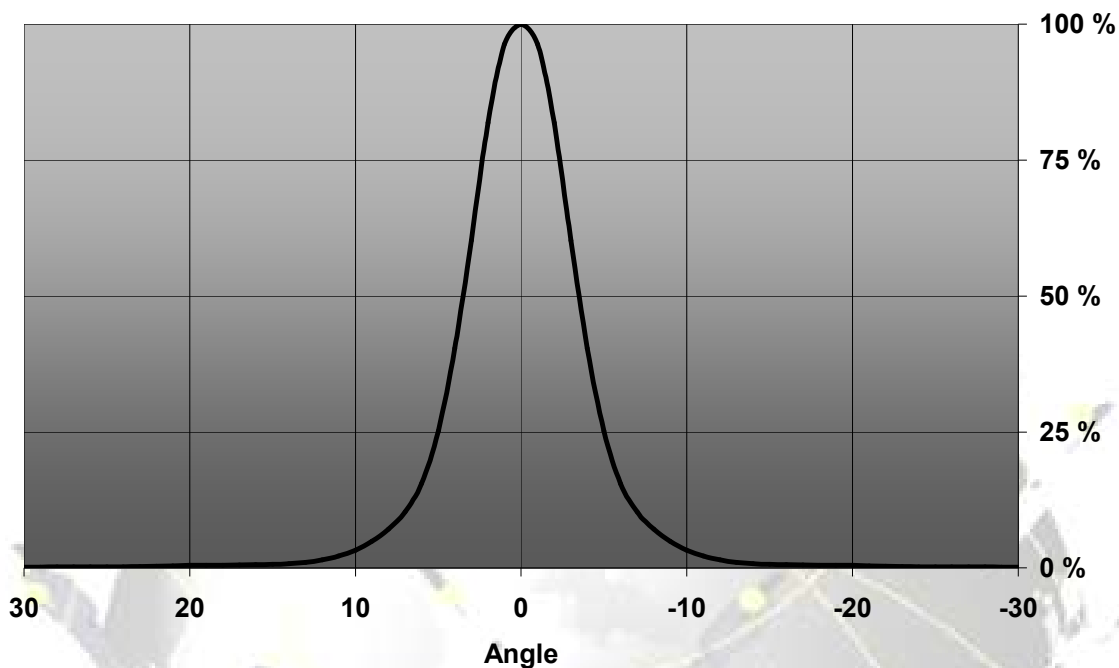
| NAME            | ORDERING CODE    | FWHM Angle  |
|-----------------|------------------|-------------|
| LXP REAL SPOT   | FA10661_LXP-RS   | ±3°         |
| LXP DIFFUSER    | FA10663_LXP-D    | ±6°         |
| LXP MEDIUM      | FA10660_LXP-M    | ±11°        |
| LXP OVAL        | FA11116_LXP-O-90 | ±5° x ±21°  |
| LXP RECTANGULAR | FA10662_LXP-REC  | ±20° x ±11° |
| LXP WIDE        | FA10832_LXP-W    | ±23°        |

EULUMDAT & IES FILES AVAILABLE BY REQUEST

© Ledil Oy – PRELIMINARY - Subject to change without prior notice

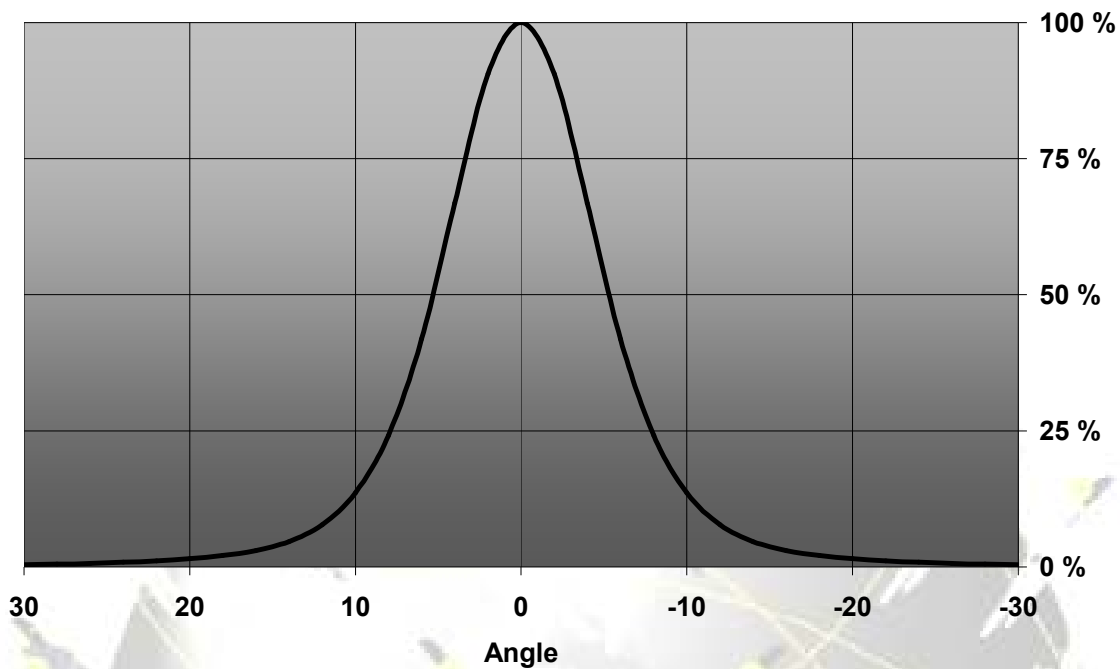
## MEASUREMENT DATA

Relative Intensity of LXP-RS



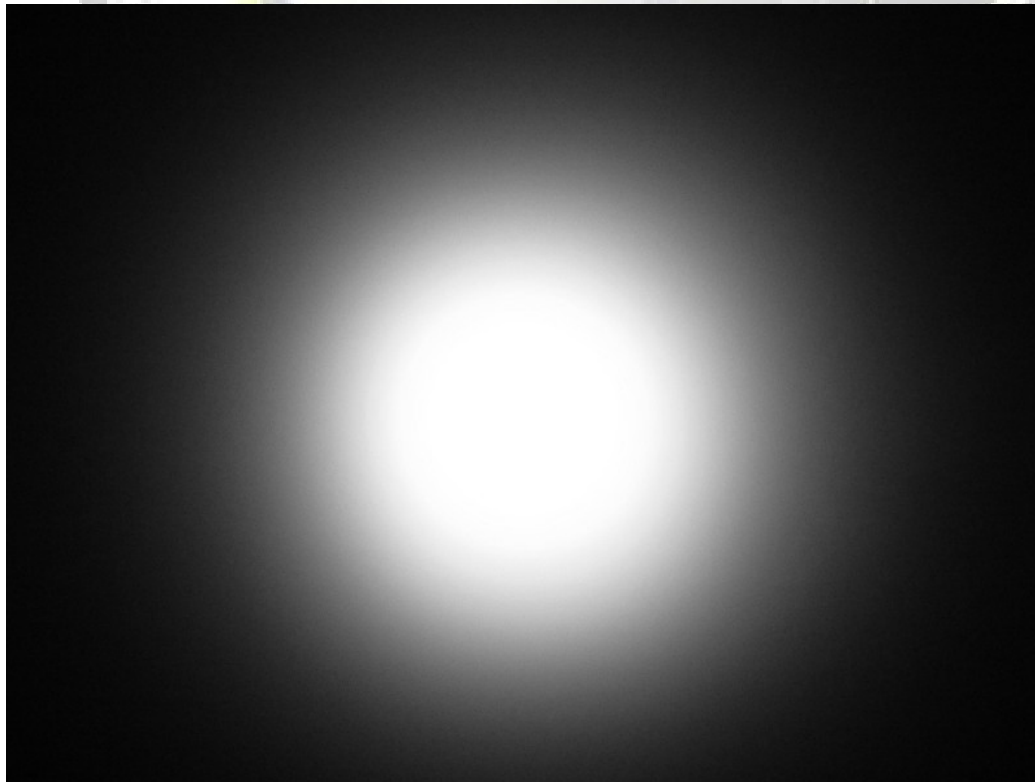
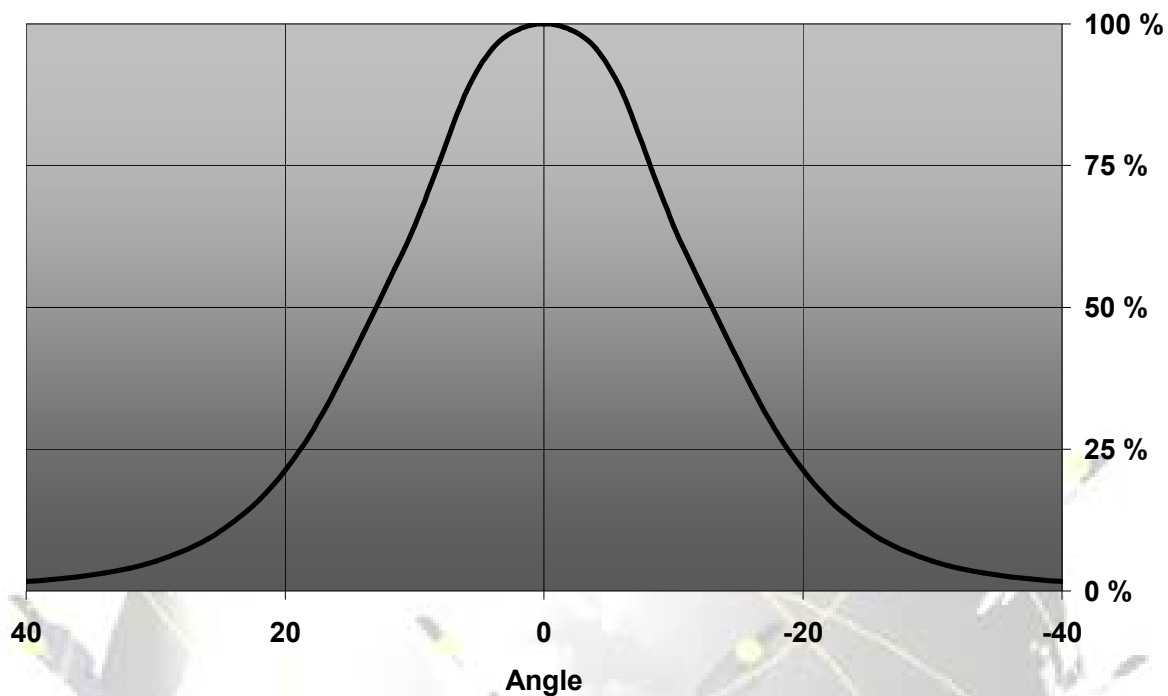
© Ledil Oy – PRELIMINARY - Subject to change without prior notice

Relative Intensity of LXP-D



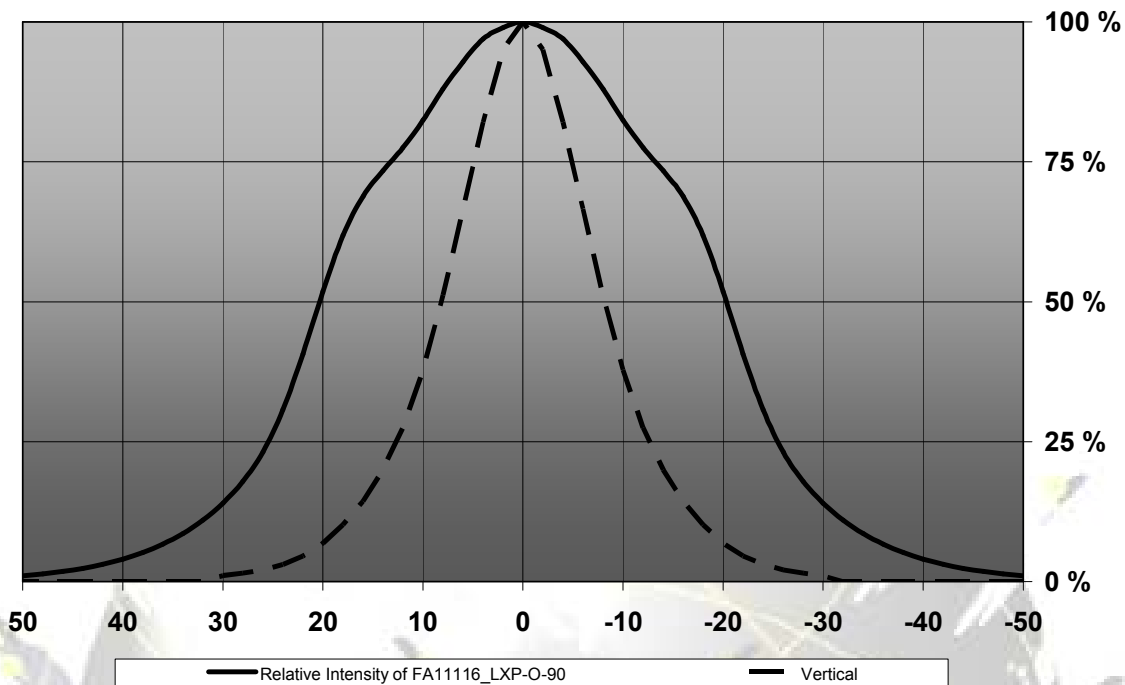
© Ledil Oy – PRELIMINARY - Subject to change without prior notice

Relative Intensity of LXP-M



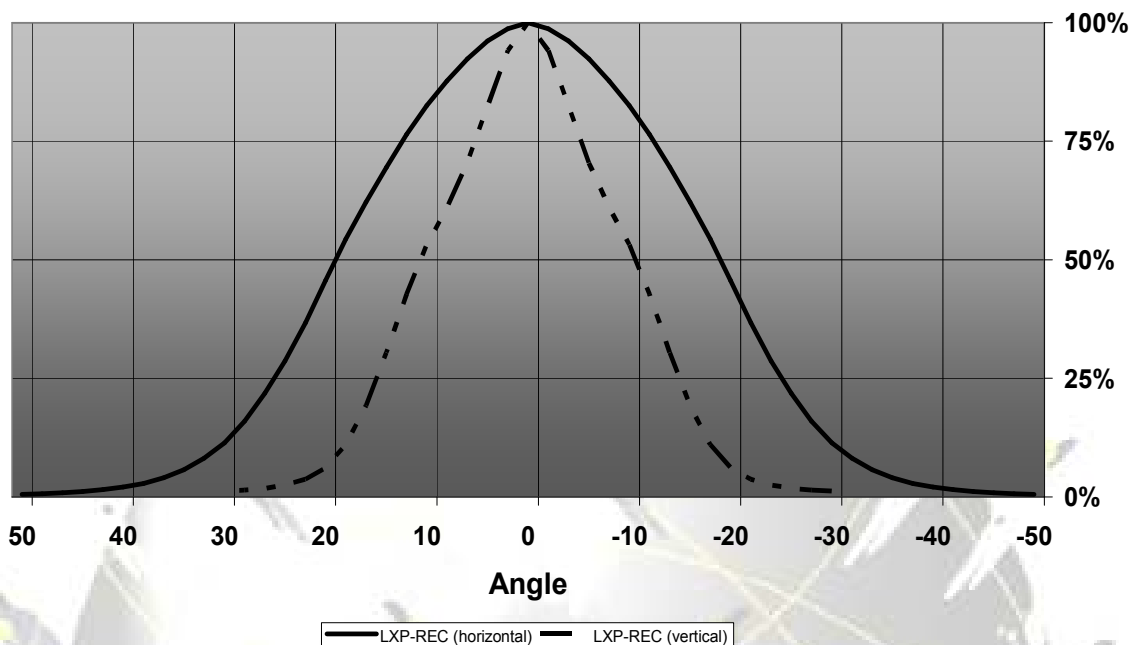
© Ledil Oy – PRELIMINARY - Subject to change without prior notice

Relative Intensity of FA11116\_LXP-O-90

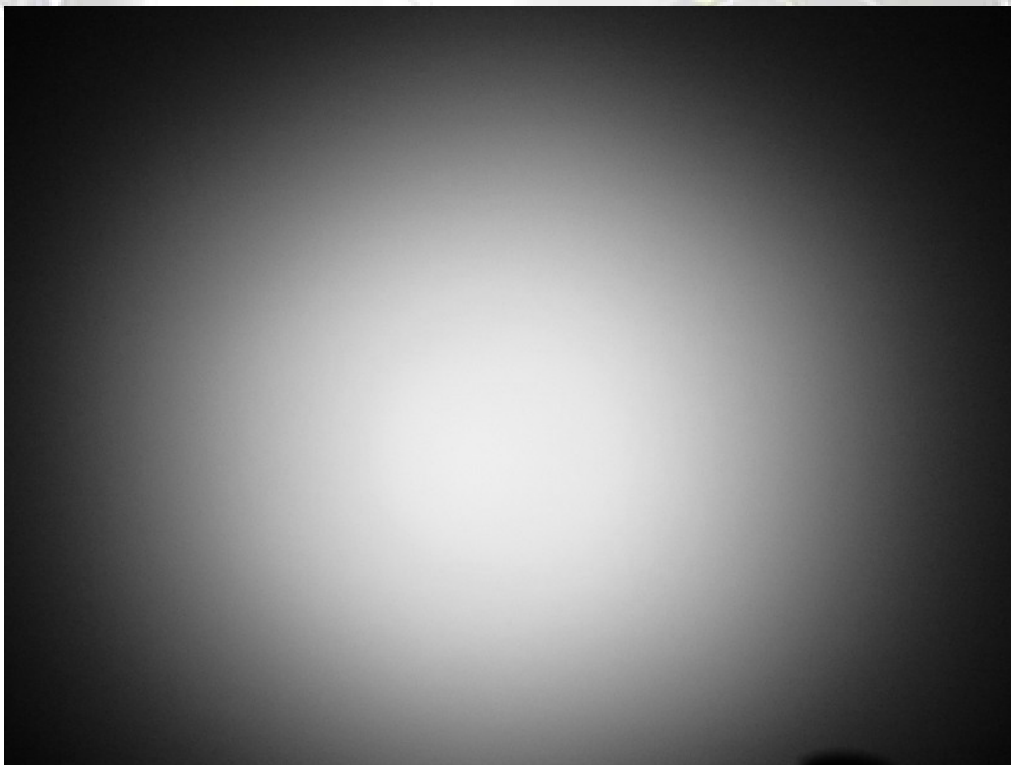
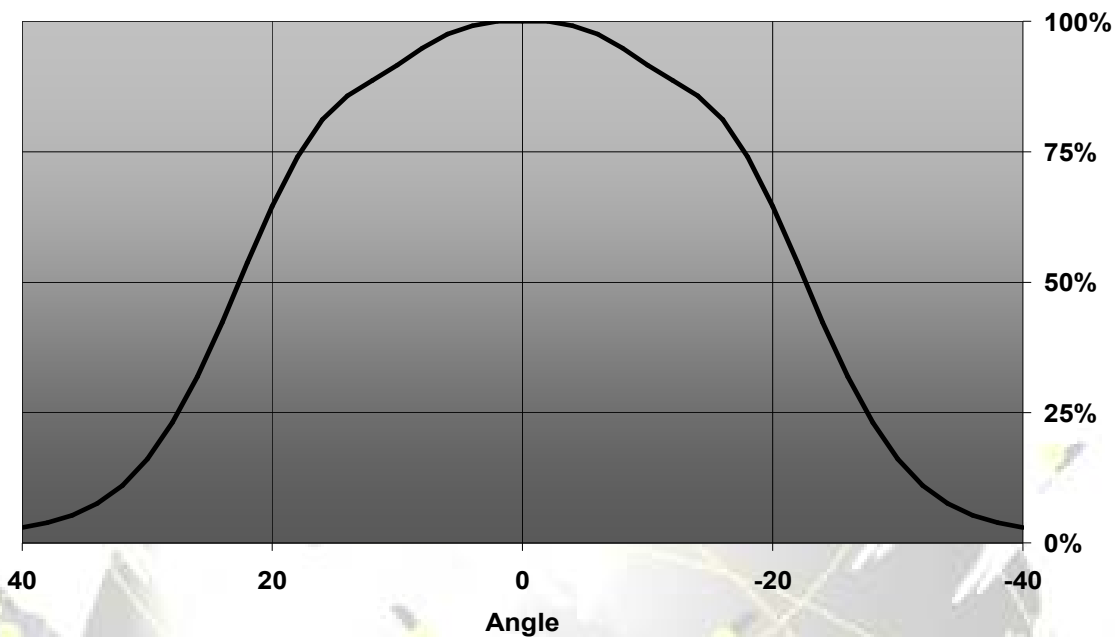


© Ledil Oy – PRELIMINARY - Subject to change without prior notice

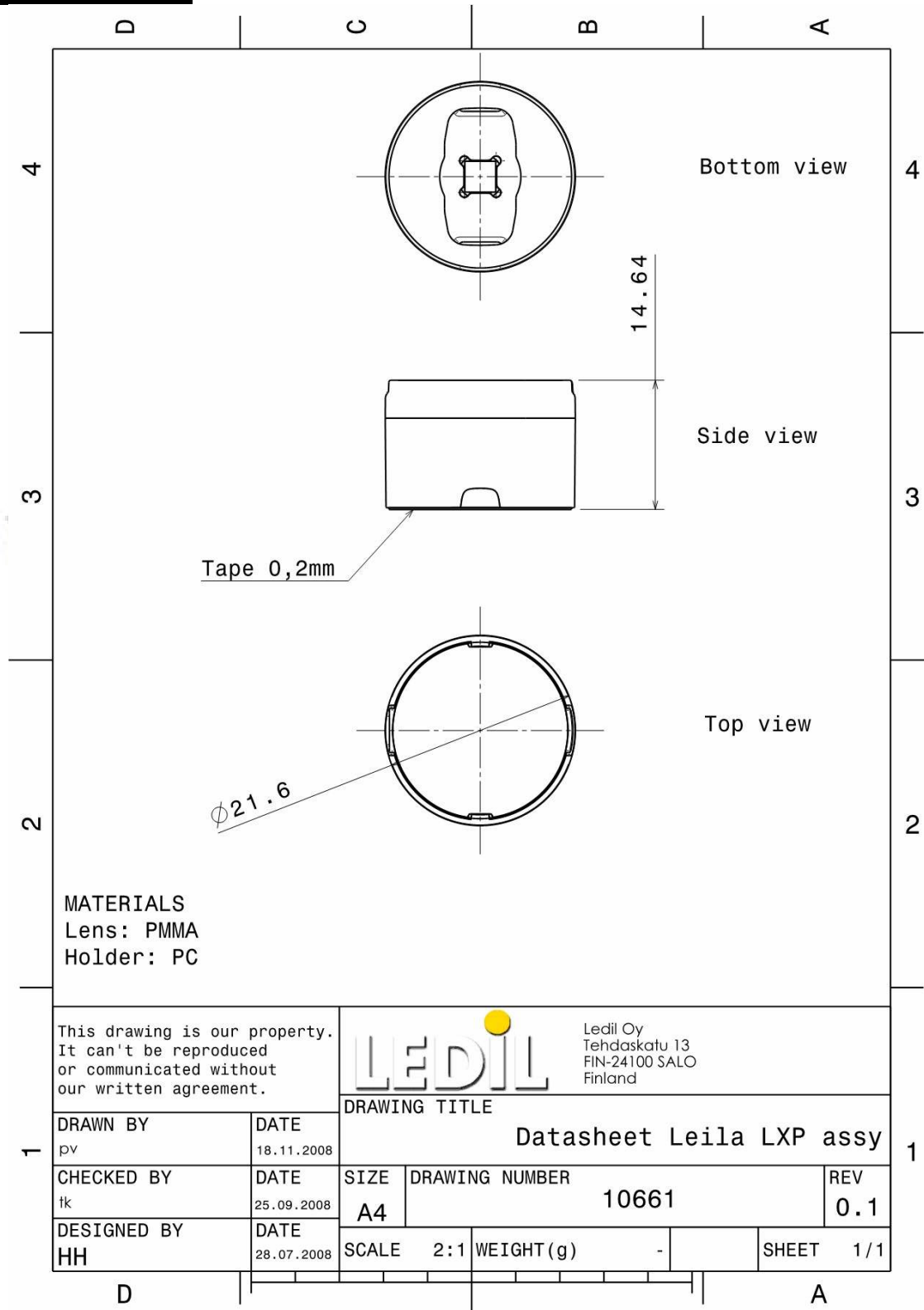
Relative Intensity of FA10662\_LXP-REC



Relative Intensity of FA10832\_LXP-W



## DRAWINGS



© Ledil Oy – PRELIMINARY - Subject to change without prior notice