



Features

- Universal AC input / Full range
- Medical safety approved
- Full output 3~48V safety approved
- Low leakage current $\leq 0.3\text{mA}$
- Protections: Short circuit / Over voltage / Over load / Over temp.
- Approvals: UL/ CUL/ TUV/ CB/ CE
- Fixed switching frequency and regulation
- Fully enclosed plastic case
- Topology: Top switch circuit
- LED indicator for power on
- 2 years warranty



General Specification (Please refer to www.meanwell.com for detail spec.)

ORDER No.	MES30A	MES30C	MES30B
AC input voltage range	90~264VAC / 0.8~0.4A		
AC inrush current (max.)	Cold start, <35A peak at 230VAC		
Over load protection	Hiccup mode, auto-recovery		
Over voltage protection	112~132% rated output voltage		
Setup, rise, hold up time	200ms, 50ms, 20ms at full load		
Withstand voltage	I/P-O/P:5656VDC, I/P-FG:2121VDC, 1 minute		I/P-O/P:5656VDC, 1 minute
Working temperature	0~+65°C (refer to output load derating curve)		
Safety standards	UL2601-1, TUV EN60601-1, IEC601-1 approved		
EMC standards	EN55011 class B, EN61000-3-2,3, EN61000-4-2,3,4,5,6,8,11 (EN60601-1-2)		
Standard output cable	180cm of UL1185,18AWG for 8~48V output ; 120cm of UL1185,16AWG for 3~8V output		
Standard output plug	2.1 ϕ x 5.5 ϕ x 11mm / C+ (refer to page 37 for DC plug list)		
Dimension (L*W*H)(mm)	108x67x36		
Packing	54pcs/20kg		

30W (IEC 320-C14 / Class I)

Stock No.	Model No.	Output	Tol.	R&N	Effi.
13891	MES30A-0P1J	3.3V, 5.00A	$\pm 5\%$	30mV	65%
13892	MES30A-1P1J	5V, 5.00A	$\pm 5\%$	30mV	70%
13893	MES30A-1-1P1J	7.5V, 3.33A	$\pm 4\%$	40mV	72%
13894	MES30A-2P1J	9V, 3.33A	$\pm 3\%$	50mV	74%
13895	MES30A-3P1J	12V, 2.50A	$\pm 3\%$	50mV	76%
13896	MES30A-4P1J	15V, 2.00A	$\pm 3\%$	60mV	78%
13897	MES30A-5P1J	18V, 1.66A	$\pm 3\%$	70mV	78%
13898	MES30A-6P1J	24V, 1.25A	$\pm 2\%$	80mV	80%
13899	MES30A-7P1J	28V, 1.07A	$\pm 2\%$	100mV	80%
13900	MES30A-8P1J	48V, 0.62A	$\pm 2\%$	100mV	82%

30W (IEC 320-C8 / Class II)

Stock No.	Model No.	Output	Tol.	R&N	Effi.
13901	MES30B-0P1J	3.3V, 5.00A	$\pm 5\%$	30mV	65%
13902	MES30B-1P1J	5V, 5.00A	$\pm 5\%$	30mV	70%
13903	MES30B-1-1P1J	7.5V, 3.33A	$\pm 4\%$	40mV	72%
13905	MES30B-3P1J	12V, 2.50A	$\pm 3\%$	50mV	76%
13906	MES30B-4P1J	15V, 2.00A	$\pm 3\%$	60mV	78%
13908	MES30B-6P1J	24V, 1.25A	$\pm 2\%$	80mV	80%
13910	MES30B-8P1J	48V, 0.62A	$\pm 2\%$	100mV	82%

30W (IEC 320-C6 / Class I)

Stock No.	Model No.	Output	Tol.	R&N	Effi.
13911	MES30C-0P1J	3.3V, 5.00A	$\pm 5\%$	30mV	65%
13912	MES30C-1P1J	5V, 5.00A	$\pm 5\%$	30mV	70%
13913	MES30C-1-1P1J	7.5V, 3.33A	$\pm 4\%$	40mV	72%
13915	MES30C-3P1J	12V, 2.50A	$\pm 3\%$	50mV	76%
13916	MES30C-4P1J	15V, 2.00A	$\pm 3\%$	60mA	78%
13918	MES30C-6P1J	24V, 1.25A	$\pm 2\%$	80mV	80%
13920	MES30C-8P1J	48V, 0.62A	$\pm 2\%$	100mV	82%

50~60W Single Output Medical Adaptor

- Universal AC input / Full range
- IEC 320-C14 AC Inlet (Class I)
- Full range output: 5~48VDC
- Option output connectors
- Protections: Short circuit / Over load / Over voltage
- Leakage current less than 0.3mA
- Design refer to UL2601-1, TUV EN60601-1
- Design refer to EN55011 class B, EN61000-3-2,3, EN61000-4-2,3,4,5,6,8,11 (EN60601-1-2)
- 2 years warranty
- Please contact our sales rep. for schedule



Best Products also need Best services.

We have authorized distributors all over the world. They have sufficient stock for your prompt delivery. Also they can offer you technical support & RMA services. Please contact your local distributors for more product information. You can also contact us at info@meanwell.com for information of your local distributors.



■ Features :

- Universal AC input / Full range
- 2 pole AC inlet IEC320-C8
- Class II power (without earth pin)
- Full output 3~48V safety approval
- Protections: Short circuit/ Over load/ Over voltage/ Over temp.
- Fix switching frequency and regulation
- LED indicator for power on
- Fully enclosed plastic case
- Topology: Top switch circuit
- Approvals: UL/ CUL/ TUV/ CB/ CE
- 2 years warranty

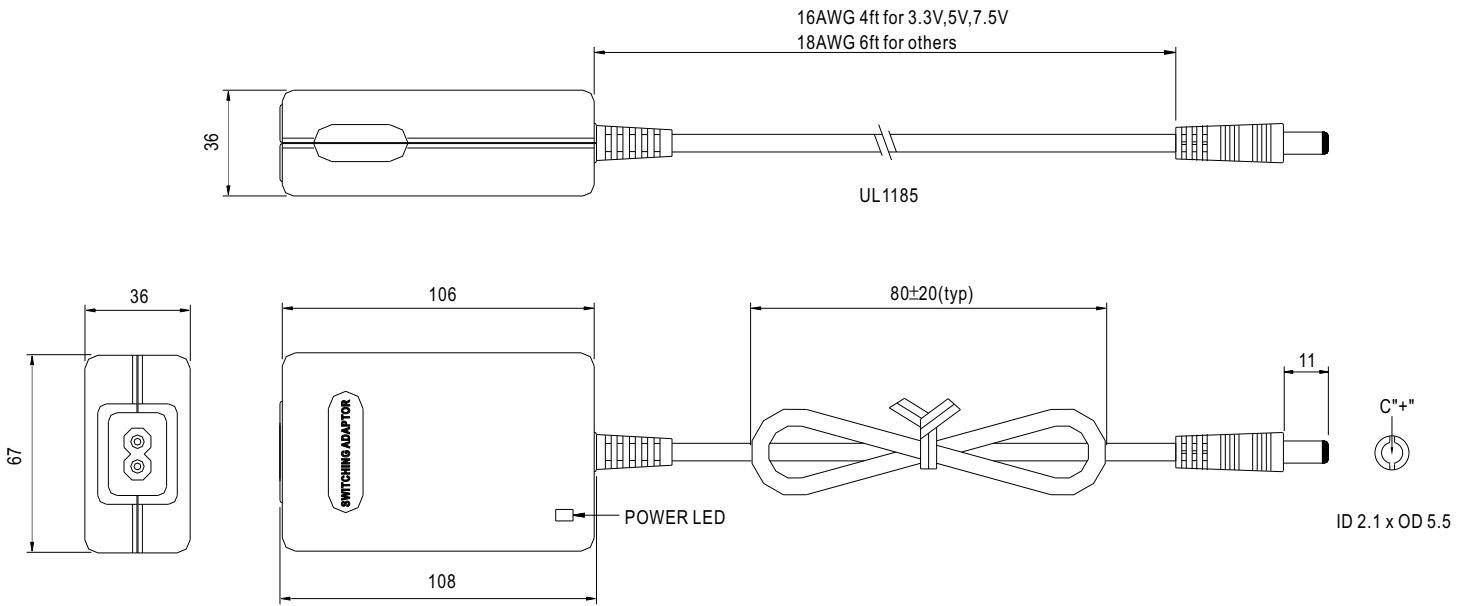


SPECIFICATION

ORDER NO.	MES30B-0P1J	MES30B-1P1J	MES30B-1-1P1J	MES30B-2P1J	MES30B-3P1J	MES30B-4P1J	MES30B-5P1J	MES30B-6P1J	MES30B-8P1J		
OUTPUT	SAFETY MODEL NO.	MES30B-0	MES30B-1	MES30B-1-1	MES30B-2	MES30B-3	MES30B-4	MES30B-5	MES30B-6	MES30B-8	
	DC VOLTAGE <small>Note.2</small>	3.3V	5V	7.5V	9V	12V	15V	18V	24V	48V	
	RATED CURRENT	5A	5A	3.33A	3.33A	2.5A	2.0A	1.67A	1.25A	0.62A	
	CURRENT RANGE	0 ~ 5A	0 ~ 5A	0 ~ 3.33A	0 ~ 3.33A	0 ~ 2.5A	0 ~ 2.0A	0 ~ 1.67A	0 ~ 1.25A	0 ~ 0.62A	
	RATED POWER	16.5W	25W	25W	30W	30W	30W	30W	30W	30W	
	RIPPLE & NOISE (max.) <small>Note.3</small>	33mVp-p	50mVp-p	75mVp-p	80mVp-p	80mVp-p	100mVp-p	100mVp-p	150mVp-p	150mVp-p	
	VOLTAGE ADJ. RANGE	Fixed									
	VOLTAGE TOLERANCE <small>Note.4</small>	±5.0%	±5.0%	±5.0%	±3.0%	±3.0%	±2.0%	±2.0%	±2.0%	±2.0%	
	LINE REGULATION <small>Note.5</small>	±1.0%	±1.0%	±1.0%	±1.0%	±1.0%	±1.0%	±1.0%	±1.0%	±1.0%	
	LOAD REGULATION <small>Note.6</small>	±5.0%	±5.0%	±5.0%	±3.0%	±3.0%	±2.0%	±2.0%	±2.0%	±2.0%	
SETUP, RISE, HOLD TIME	300ms, 50ms, 16ms at full load										
INPUT	VOLTAGE RANGE	90 ~ 264VAC 135~370VDC									
	FREQUENCY RANGE	47~63Hz									
	EFFICIENCY (Typ.)	65%	70%	72%	74%	76%	78%	78%	80%	82%	
	AC CURRENT	0.8A / 100VAC									
	INRUSH CURRENT (max.)	35A / 230VAC									
	LEAKAGE CURRENT (max.)	0.1mA / 240VAC									
PROTECTION	OVER LOAD	112~250% rated output power				150~350% rated output power					
		Protection type : Hiccup mode, recovers automatically after fault condition is removed									
	OVER VOLTAGE	110~140% rated output voltage									
	Protection type : Hiccup mode, recovers automatically after fault condition is removed										
OVER TEMPERATURE	Tj 135°C typically (IC1) detect on main control IC										
	Protection type : Shut down o/p voltage, recovers automatically after temperature goes down										
ENVIRONMENT	WORKING TEMP.	0~+40°C (Refer to output load derating curve)									
	WORKING HUMIDITY	20%~90% RH non-condensing									
	STORAGE TEMP., HUMIDITY	-20~+85°C, 10~95% RH									
	TEMP. COEFFICIENT	±0.03% / °C (0~50°C)									
	VIBRATION	10~500Hz, 2G 10min./1cycle, period for 60min. each along X, Y, Z axes									
SAFETY & EMC <small>(Note. 7)</small>	SAFETY STANDARDS	UL2601-1, IEC601-1, EN60601-1 Approved									
	WITHSTAND VOLTAGE	I/P-O/P: 5656VDC									
	ISOLATION RESISTANCE	I/P-O/P: 100M Ohms / 500VDC									
	EMI CONDUCTION & RADIATION	Compliance to EN55011(CISPR11) class B									
	HARMONIC CURRENT	Compliance to EN61000-3-2,3									
EMS IMMUNITY	Compliance to EN60601-1-2 (EN61000-4-2,3,4,5,6,8,11), ENV50204, Light industry level, criteria A										
OTHERS	MTBF	400Khrs min. MIL-HDBK-217F (25°C)									
	DIMENSION	108*67*36mm (L*W*H)									
	PACKING	0.3kg ; 54pcs/ 20kg / CARTON									
CONNECTOR	PLUG	Standard type P1J: 2.1φ * 5.5φ * 11mm, turning fork type, center positive for stock ; Other type available by customer requested									
	CABLE	Standard type UL1185 for stock ; Other type available by customer requested									
NOTE	<p>1.All parameters are specified at 230VAC input, rated load, 25°C 70% RH. Ambient.</p> <p>2.DC voltage: The output voltage set at point measure by plug terminal & 50% load.</p> <p>3.Ripple & noise are measured at 20MHz by using a 12" twisted pair terminated with a 0.1uf & 47uf capacitor.</p> <p>4.Tolerance: includes set up tolerance, line regulation, load regulation.</p> <p>5.Line regulation is measured from low line to high line at rated load.</p> <p>6.Load regulation is measured from 0% to 100% rated load.</p> <p>7.The power supply is considered a component which will be installed into a final equipment. The final equipment must be re-confirmed that it still meets EMC directives.</p>										

Mechanical Specification

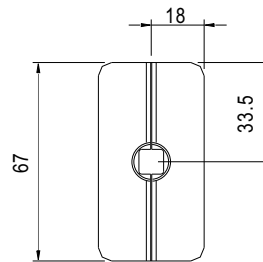
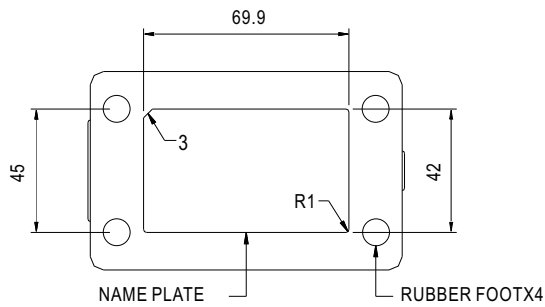
Unit:mm



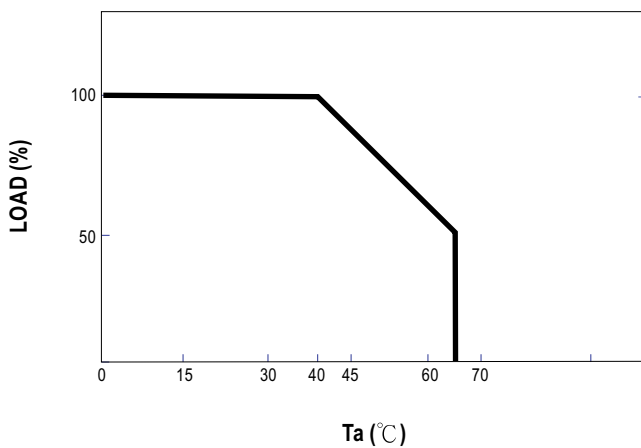
Plug Assignment

Standard plug: P1J (option)

P1J	
P/N	OUTPUT
CENTER	+



Derating Curve



Static Characteristics

