

## MX6 SQUARE lenses for CREE MX-6 LEDs



- Specially designed for CREE MX-6 series of LEDs
- Special care taken to make a uniform white or warm white illumination.
- Lens material optical grade PC with high UV and temperature resistance (130°C/220°F).
- Best available optical efficiency, up to >90%, with an extremely good cutoff of light
- Integrated holder. Fastening to heat sink with a PU foam adhesive tape of automotive grade
- Compact dimensions 21.6 x 21.6 mm. Square form enables easy build of matrix without any gaps between lenses.

## LENS TYPES

NAME	ORDERING CODE	FWHM Angle
MX6 REAL SPOT*	FA10336_MX6-RS	±6°
MX6 SMOOTH SPOT*	FA10337_MX6-SS	±8.5°
MX6 DIFFUSER	FA10338_MX6-D	±8.5°
MX6 MEDIUM	FA10339_MX6-M	±15°
MX6 OVAL	FA10340_MX6-O	±22° x ±9°
MX6 OVAL TURNED 90°	4FA11151_MX6-O-90	±22° x ±9°
MX6 WIDE	FA10344_MX6-W	coming soon
MX6 WIDE VERSION 6	FA10903_MX6-W-V6	±33°

### \* ) IMPORTANT NOTICE:

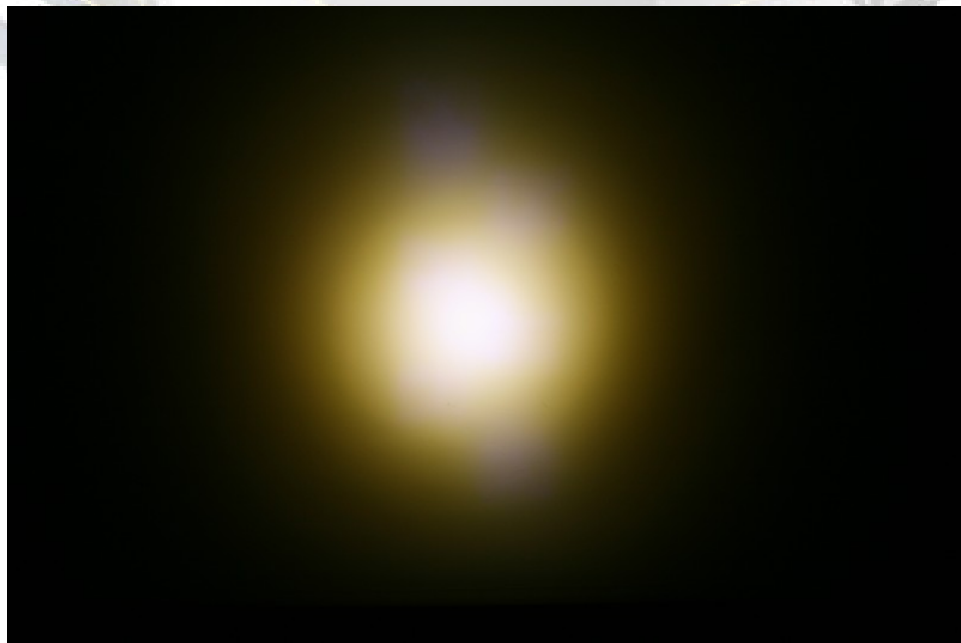
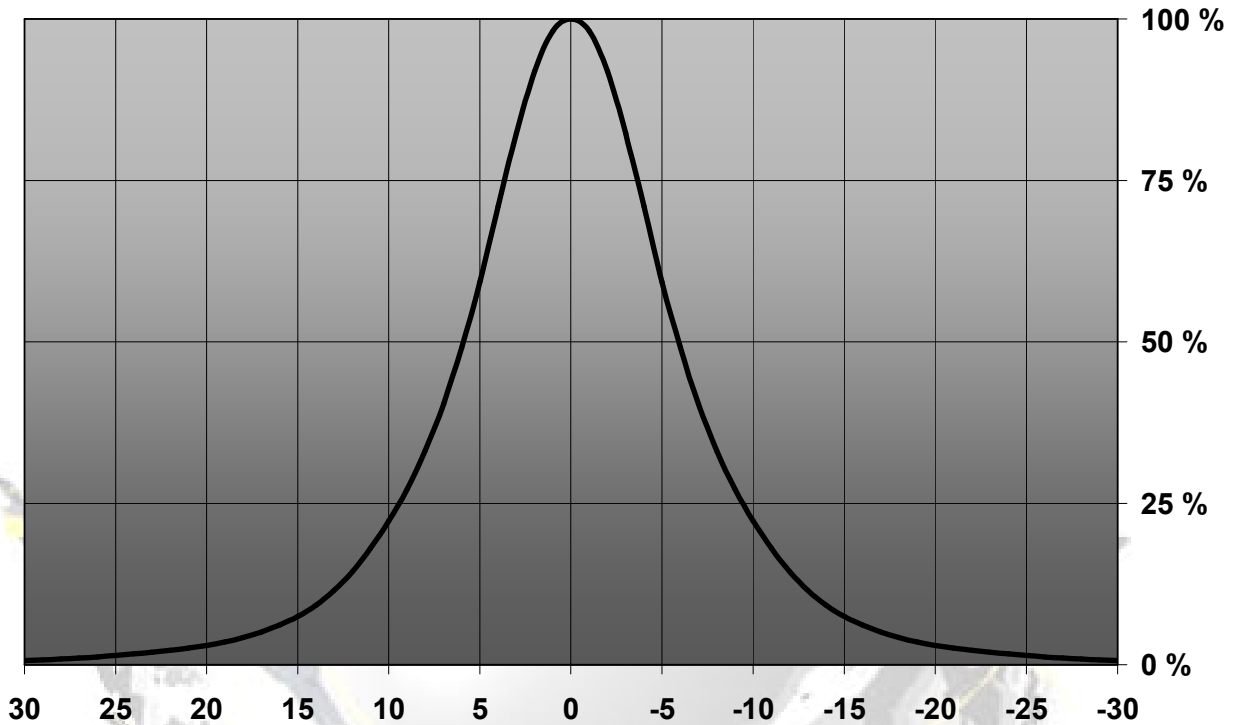
**REAL SPOT** lens is a highly efficient pure collimator lens, which optically functions in an excellent way, giving a high intensity. REAL SPOT lens also reveals the chip level optical structure of the LED. We recommend REAL SPOT lens ONLY for applications, where light intensity is of highest priority, while we do not recommend it for applications, where color uniformity and aesthetics are of high importance.

**SMOOTH SPOT** lens is a pure collimator lens with light mixing properties. It smoothens the beam pattern and makes a uniform color distribution over the whole beam angle. Light intensity is lower than for the REAL SPOT lens. SMOOTH SPOT lens is recommended for white light applications, where pleasant, high-quality illumination is wished.

© Ledil Oy – PRELIMINARY - Subject to change without prior notice

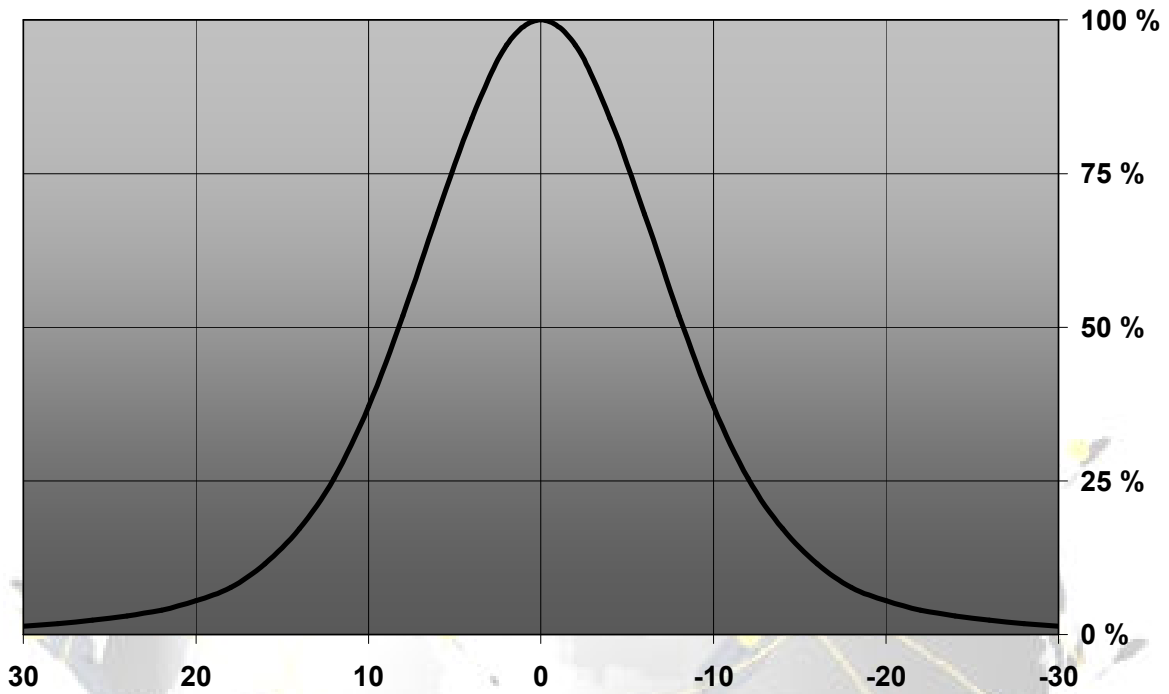
## MEASUREMENTS

Relative Intensity of FA10336\_MX6-RS



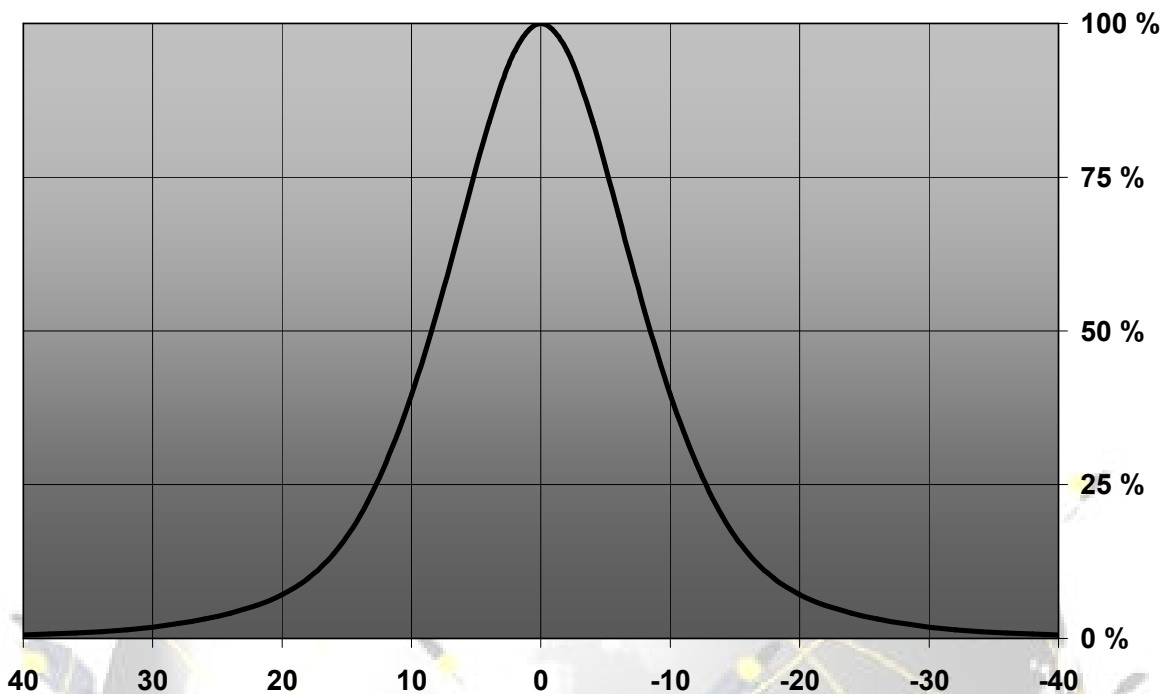
© Ledil Oy – PRELIMINARY - Subject to change without prior notice

Relative Intensity of FA10337\_MX6-SS



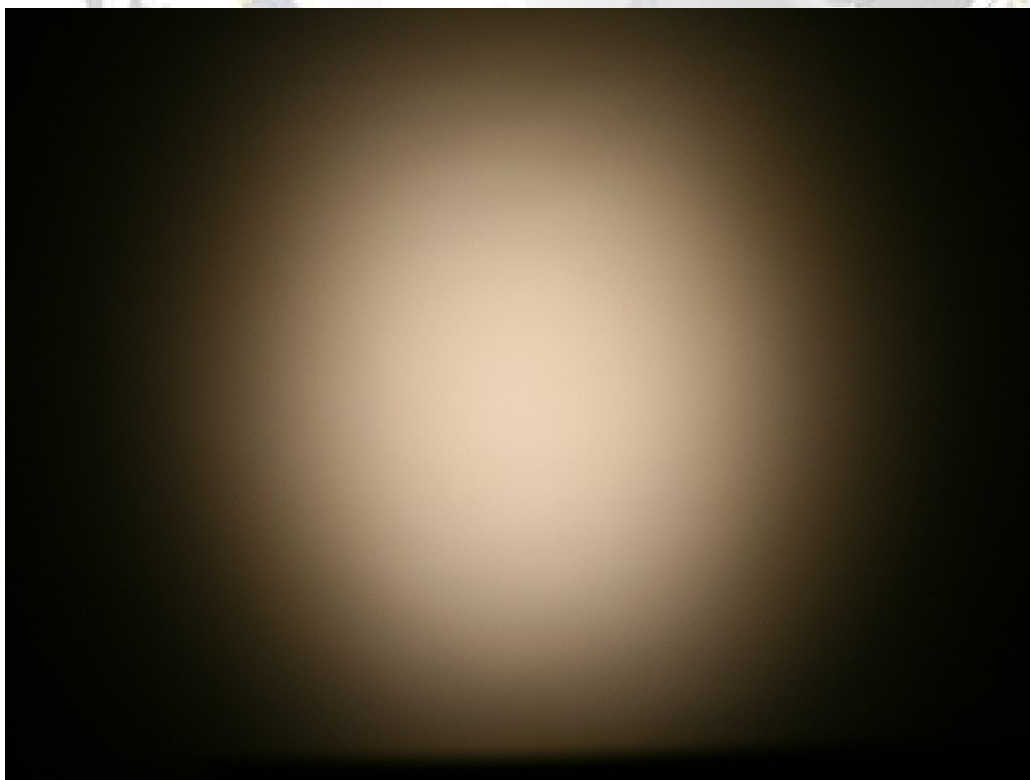
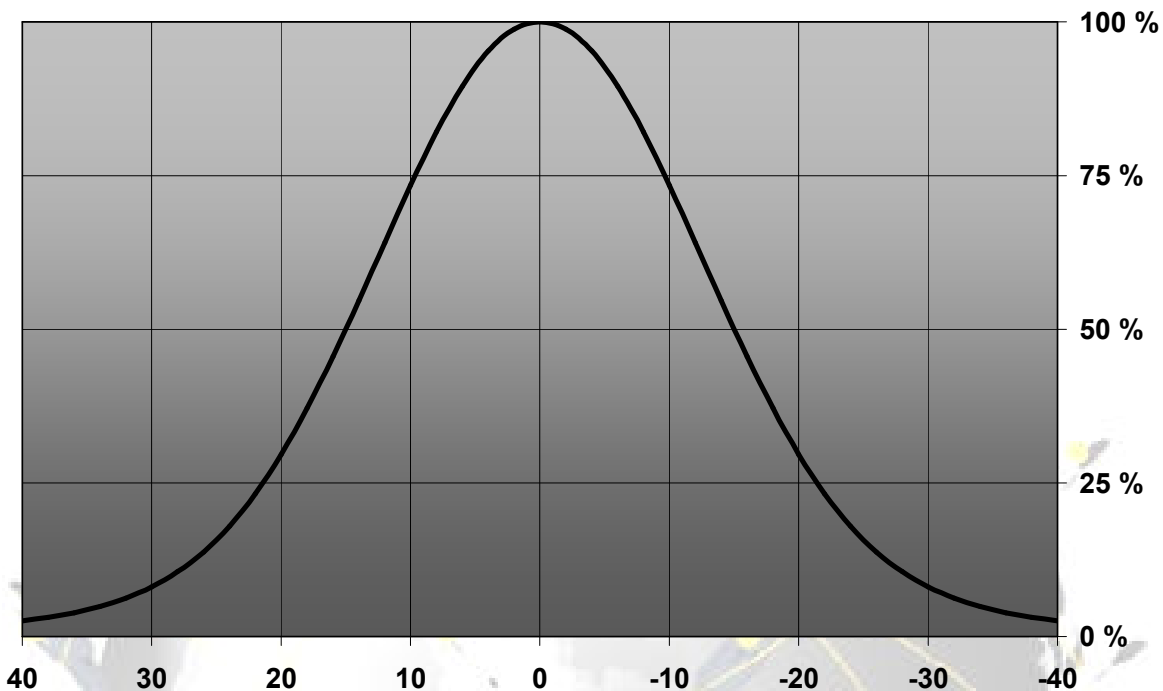
© Ledil Oy – PRELIMINARY - Subject to change without prior notice

Relative Intensity of FA10338\_MX6-D



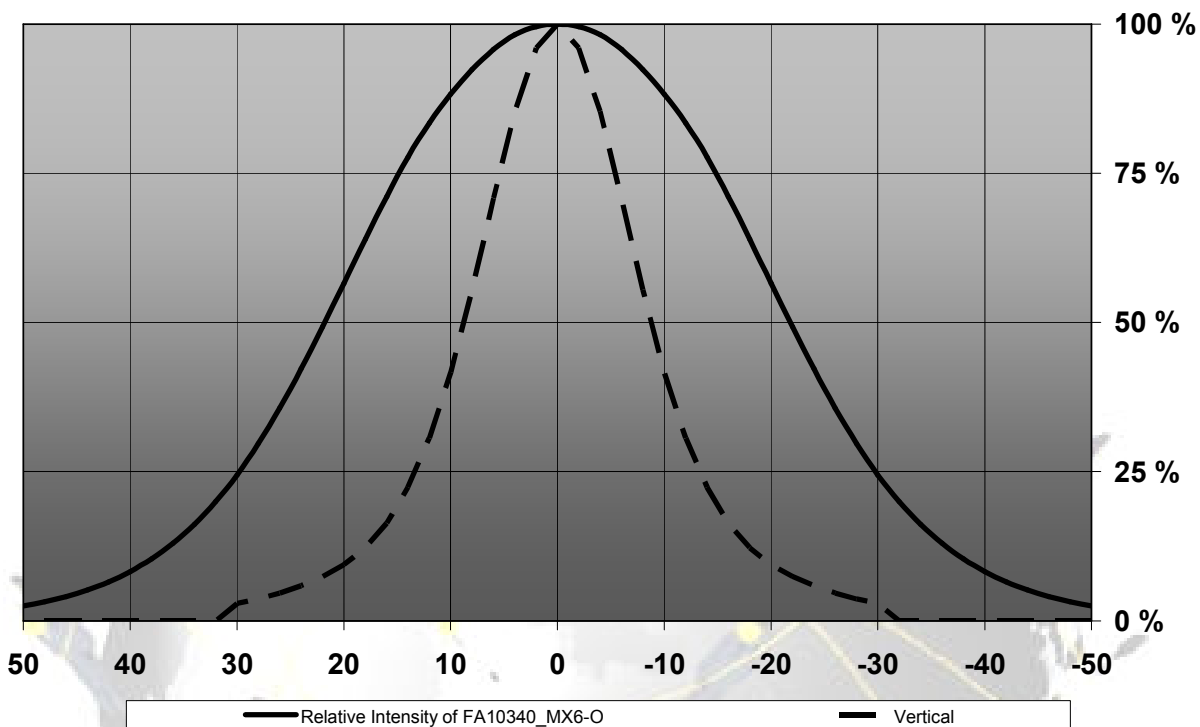
© Ledil Oy – PRELIMINARY - Subject to change without prior notice

Relative Intensity of FA10339\_MX6-M



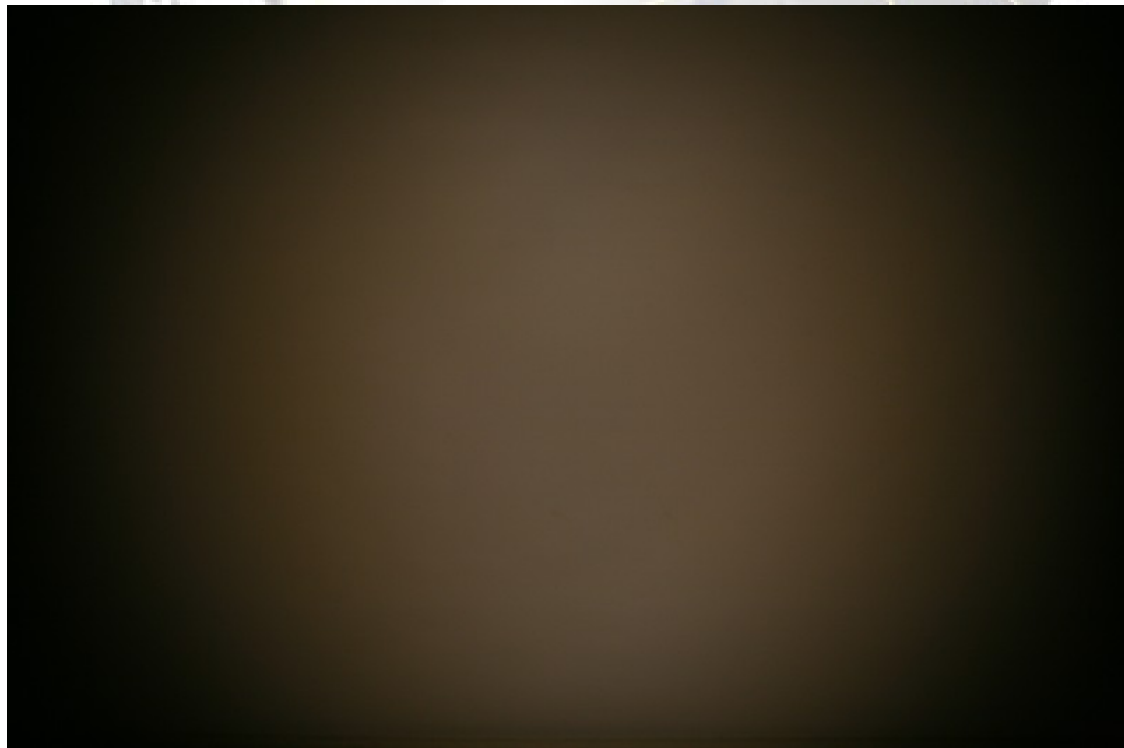
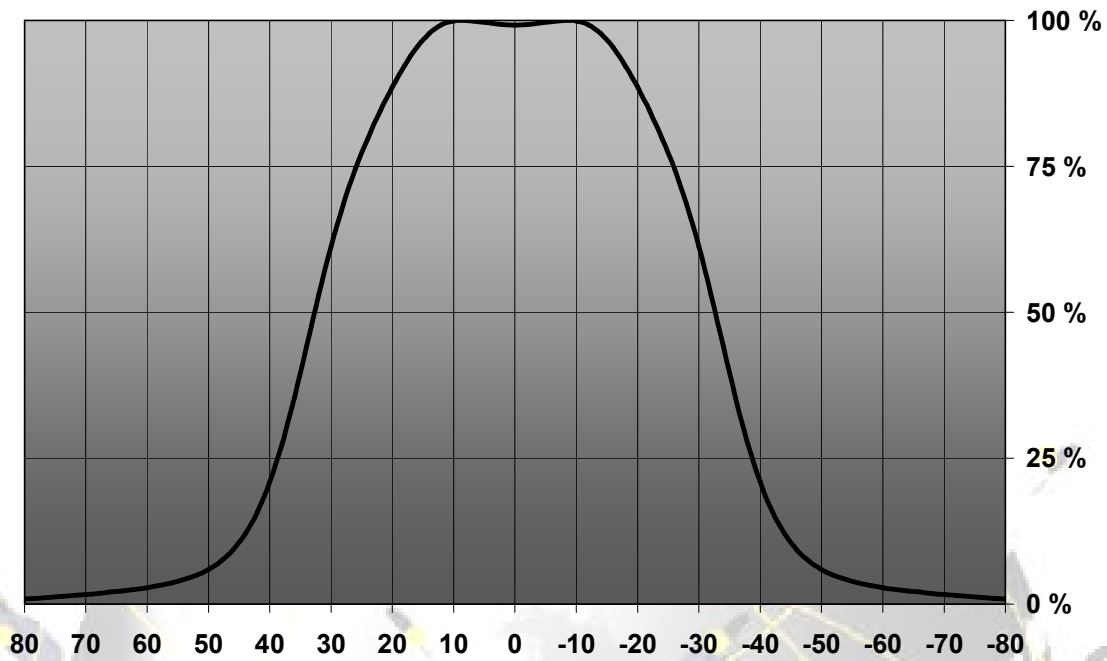
© Ledil Oy – PRELIMINARY - Subject to change without prior notice

Relative Intensity of FA10340\_MX6-O



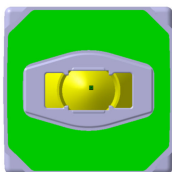
© Ledil Oy – PRELIMINARY - Subject to change without prior notice

Relative Intensity of FA10903\_MX6-W-V6

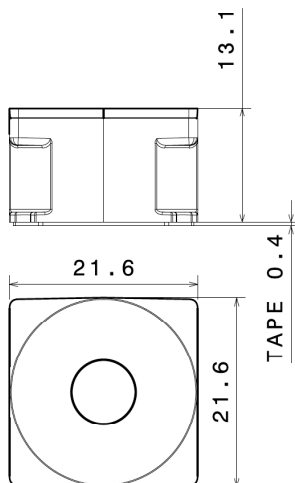


© Ledil Oy – PRELIMINARY - Subject to change without prior notice

## DIMENSIONS



Adhesive tape for quick and secure fastening.



## PACKAGING

MX6 lenses are delivered on adhesive tape liner sheets, each sheet containing 60 lenses.

## SPECIAL VERSIONS

Special versions available on request, e.g. different lens holder colors or packaging sizes.