

RES SQUARE lenses for LUXEON Rebel LEDs



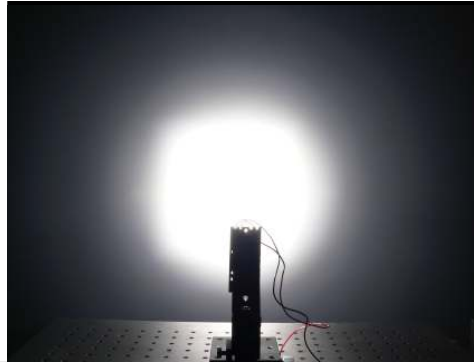
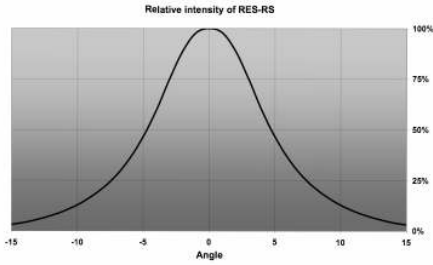
- Designed & optimized for Luxeon Rebel series of LEDs
- Lens material optical grade PC with high UV and temperature resistance (130°C/220°F). Allows use of high current and temperature conditions
- Best available optical efficiency, up to 90%, with an extremely good cutoff of light
- Integrated holder. Fastening to heat sink with a PU foam adhesive tape of automotive grade
- Compact dimensions 21.6 x 21.6 mm. Square form enables easy build of matrix without any gaps between lenses.

LENS TYPES

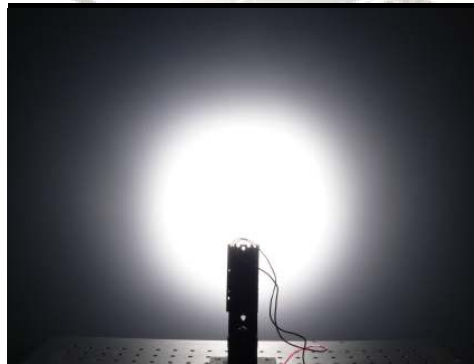
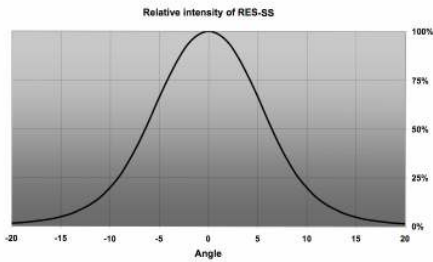
NAME	ORDERING CODE	FWHM Angle
RE SQUARE REAL SPOT	FA10856_RES-RS	±4°
RE SQUARE SMOOTH SPOT	FA10853_RES-SS	±6°
RE SQUARE DIFFUSER	FA10852_RES-D	±8°
RE SQUARE MEDIUM	FA10851_RES-M	±15°
RE SQUARE WIDE	FA10855_RES-W	±17°
RE SQUARE WIDE-V6	FA10903_RES-W-V6	±27°
RE SQUARE OVAL	FA10854_RES-O	±6° x ±23°

MEASUREMENTS

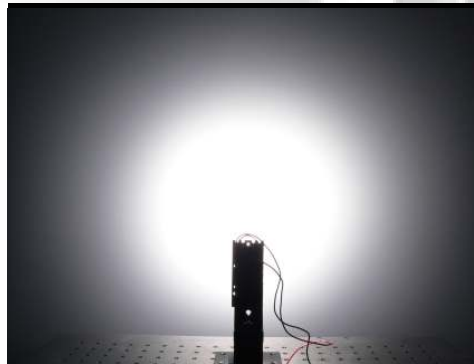
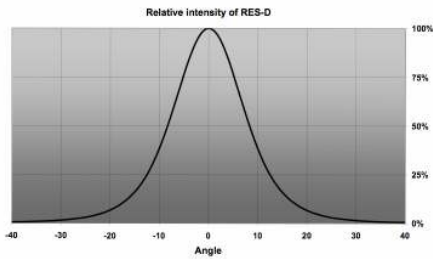
RES-RS



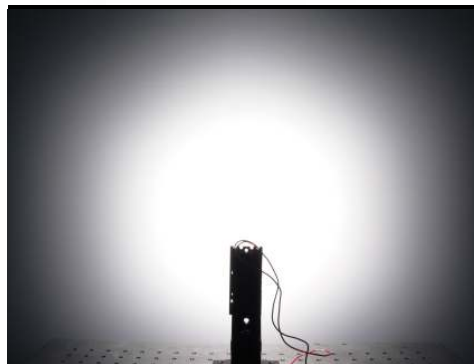
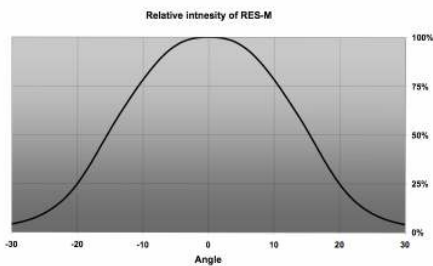
RES-SS



RES-D

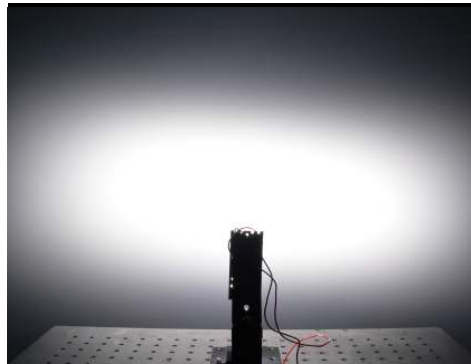
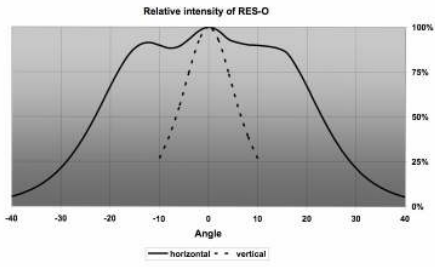


RES-M

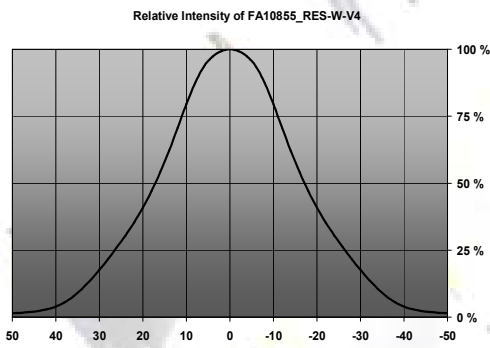


© Ledil Oy – PRELIMINARY - Subject to change without prior notice

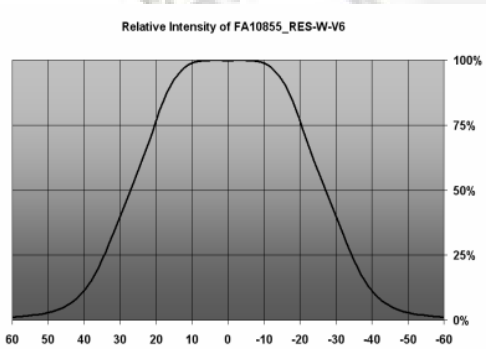
RES-O



RES-W-V4



RES-W-V6



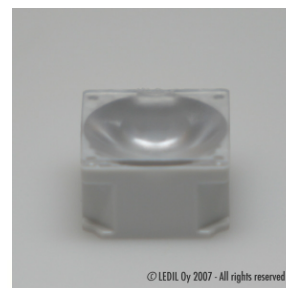
PHOTOS



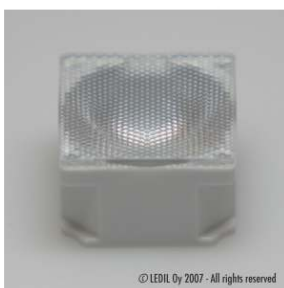
RES-RS



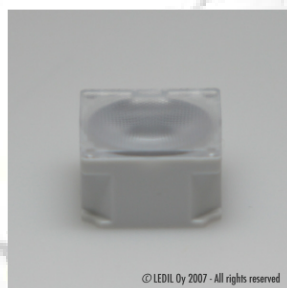
RES-SS



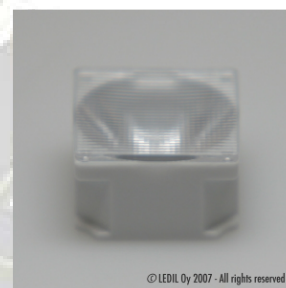
RES-D



RES-M

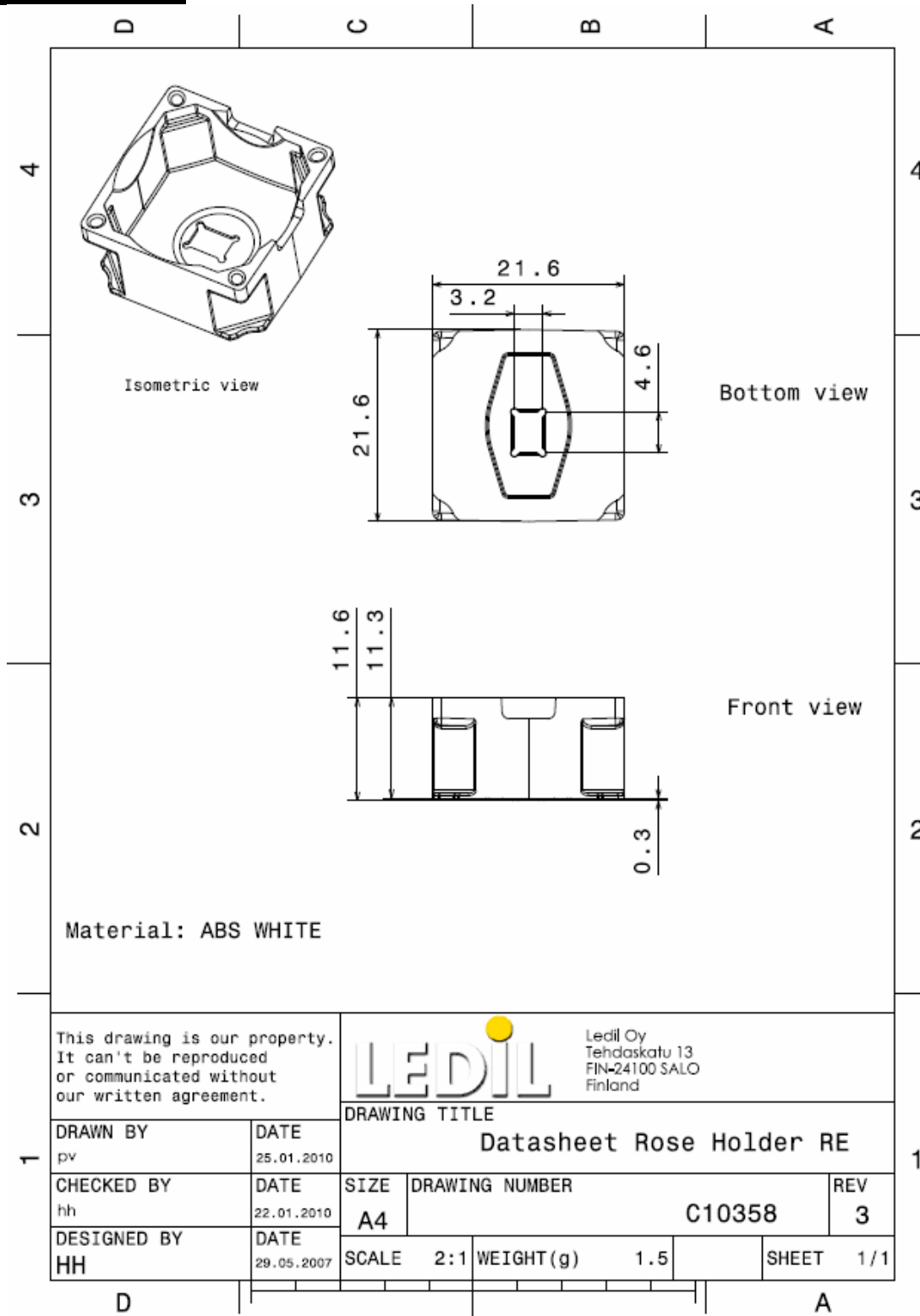


RES-W



RES-O

DRAWING



© Ledil Oy - PRELIMINARY - Subject to change without prior notice