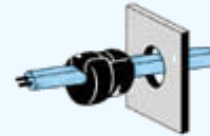


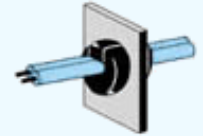
# 35-010 STRAIN RELIEF BUSHINGS



1.Position on wire



2.Squeeze into with plier

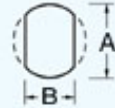


3.Push into hole

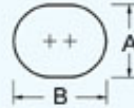


Mounting Holes

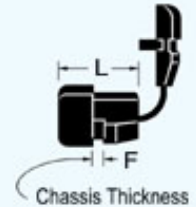
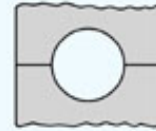
(F&R-TYPE)



(LF-TYPE)




(SB9R-1SP)



- . Material : Nylon PA 66 ( UL 94V-2 ).
- . Colour : Black.
- . Application : It is designed to hold the cord firmly and can be assembled into panel hole securely by AVC Assembly Tool AT-100 hand pliers or other available tools.  
To protect cable against forces of flex, pull, push and twist.

Unit : mm

Key-Contour Style	Cat. No.	UL Wires Accommodated	Approx. wire Size	Mounting Holes		Part Length L	Thickness F	Approved		Std. Pkg. pcs
				A	B			UL E88343	CSA 57957	
<b>F - TYPE (FLAT)</b> 	SB2F-1	SPT-1 2C#18	2.8 X 5.3	9.5	8.7	10.5	0.5~1.7			100 & 1000
	SB2F-3						1.8~3.2		-	
	SB3F-0	SPT-1 2C#18	3.0 X 5.6	11	9.9	10.3	0.4~0.8			
	SB3F-1						0.5~1.8			
	SB3F-2						1.9~2.6			
	SB4F-1	SPT-1 3C#18	3.0 X 7.6	12.7	11.8	10.8	0.5~1.7			
	SB41-1	SPT-2 2C#18					0.5~1.6		-	
	SB4F-2	SPT-2 2C#16	4.1 X 7.6	12.5	11.8	12.5	1.8~2.6			
	SB5F-1	SPT-2 2C#16	4.1 X 7.6				0.5~1.7			
	SB5F-3	SPT-3 2C#18	4.8 X 8.9	14.3	13.2	15.4	1.8~3.5		-	
LF - TYPE	SB6LF-2	300 OHM	1.5 X 10.2	9.5	16	11.7	1.0~2.7			
<b>R - TYPE ROUND</b> 	SB5M-1	SVT 2C#18	5.5Ø~6.3Ø	12.7	11.5	11.1	0.5~1.6		-	
	SB5M-2						1.7~2.6		-	
	SBR5-1	SVT 2C#18	6.2Ø~7.4Ø	12.7	11.5	11.8	0.5~1.8			
	SBR5-2	SVT 3C#18					1.9~2.8			
	SB5P-2	SJT 2C#18	6.8Ø~7.8Ø	12.7	11.8	12.5	0.8~2.6		-	
	SB6N-4	SJT 3C#18	7.4Ø~8.2Ø	15.9	14	15	0.5~1.8			
	SB6R-3						1.9~3.2			
	SB7R-1	SJT 3C#16	8.2Ø~9.2Ø	15.9	14	15	0.5~1.8			
	SB7R-3						1.9~3.2			
	SB8R-1	SJT 3C#14	9.2Ø~10.5Ø	19	16.5	18.5	0.5~1.8			
			11Ø	19.8						
	SB8R-3		9.2Ø~10.5Ø	19			1.8~3.5		-	
	11Ø		19.8							
SB9R-2	SJT 3C#12	12Ø~15.2Ø	22.2	21.3	20	0.8~2.5	-		100	

	SB10R2-7	SJT 3C#10	15.2Ø~16.3Ø	28	25.4	25.2	1.2~7.0	-	
			17.5Ø	30.2					
FOR POWER SUPPLY	SB9R-1SP	#18 20pcs~30pcs	11Ø~15Ø	19	19	17.5	0.5~1.6	-	-