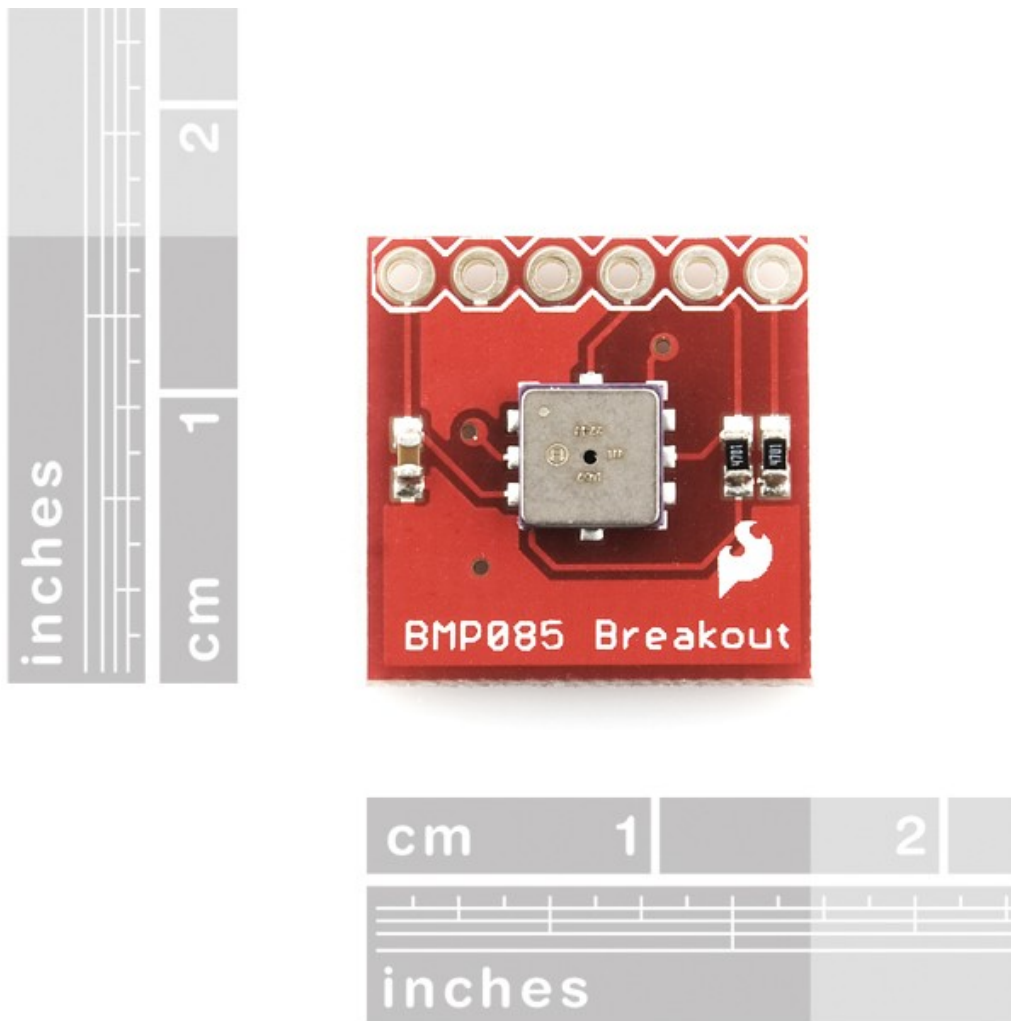


# SparkFun Electronics

## Barometric Pressure Sensor - BMP085 Breakout

sku: SEN-09694



**Description:** This is a simple breakout board for the BMP085 high-precision, low-power barometric pressure sensor. The BMP085 offers a measuring range of 300 to 1100 hPa with an absolute accuracy of down to 0.03 hPa. It's based on piezo-resistive technology for EMC robustness, high accuracy and linearity as well as long term stability. This sensor supports a voltage supply between 1.8 and 3.6VDC. It is designed to be connected directly to a micro-controller via the I<sup>2</sup>C bus

This breadboard-friendly board breaks out all pins of the BMP085 to a 6-pin 0.1" pitch header. The analog and digital supplies (VDDD and VDDA) of the BMP085 are tied together and broken out to a single pin. We've also put two 4.7k pull-up resistors on the I<sup>2</sup>C lines.

**Features:**

- Digital two wire (I<sup>2</sup>C) interface
- Wide barometric pressure range
- Flexible supply voltage range
- Ultra-low power consumption
- Low noise measurement
- Fully calibrated
- Temperature measurement included
- Ultra-flat, small footprint

**Dimensions:**

- 0.65 x 0.65" (16.5 x 16.5 mm)

**Documents:**

- [Schematic](#)
- [Datasheet](#)
- [Eagle Files](#)
- [Quickstart Guide](#)
- [Example Arduino Sketch](#)
- [Example Code](#) (ATmega328)
- [Product Flyer](#)
- [Wiring Example](#)
- [mbed User Review](#)
- [Bildr Tutorial](#)