

SKET 740



SEMIPACK[®] 6

Thyristor Modules

SKET 740

Preliminary Data

Features

- Precious metal pressure contacts for high reliability
- Thyristor with amplifying gate

Typical Applications

- DC motor control (e. g. for machine tools)
- Temperature control (e. g. for ovens, chemical processes)
- Softstart application

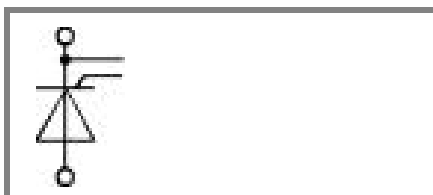
1) calculated with characteristic values

2) characteristic values

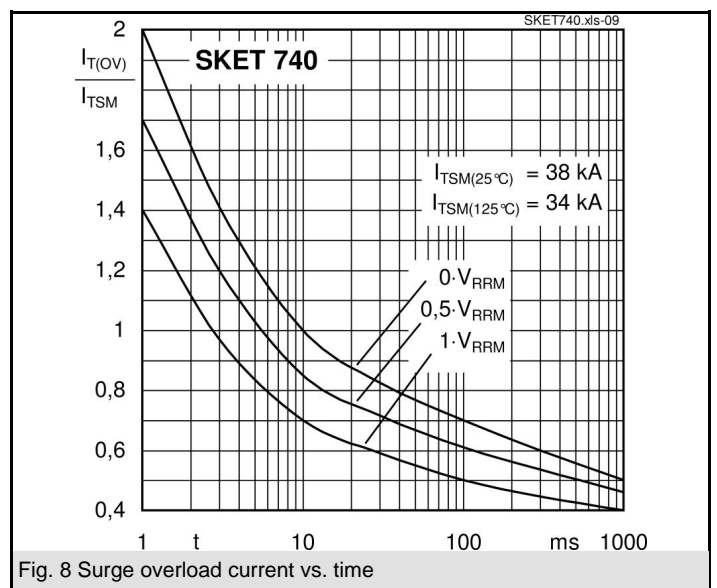
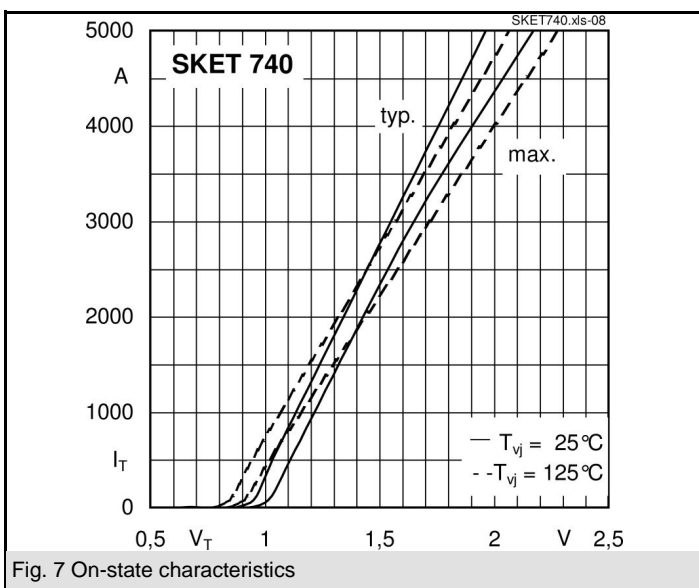
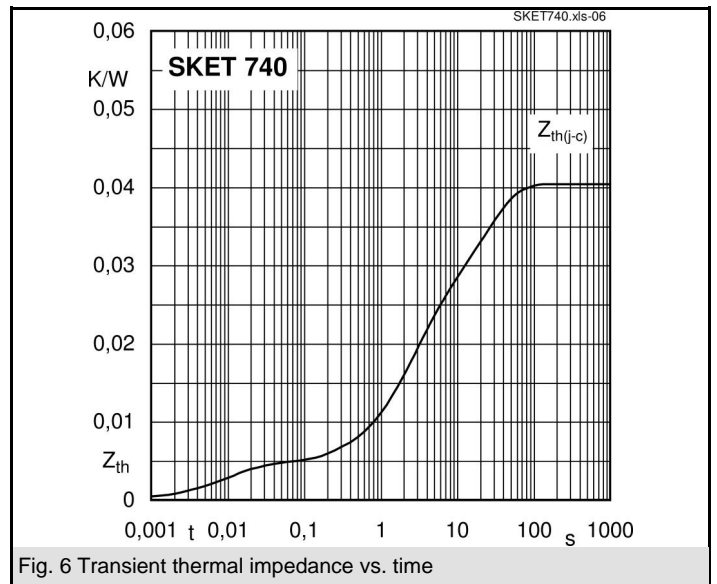
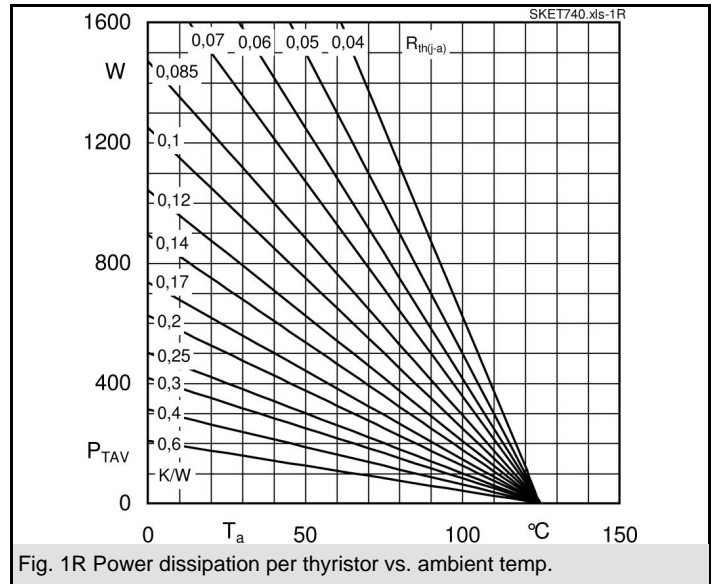
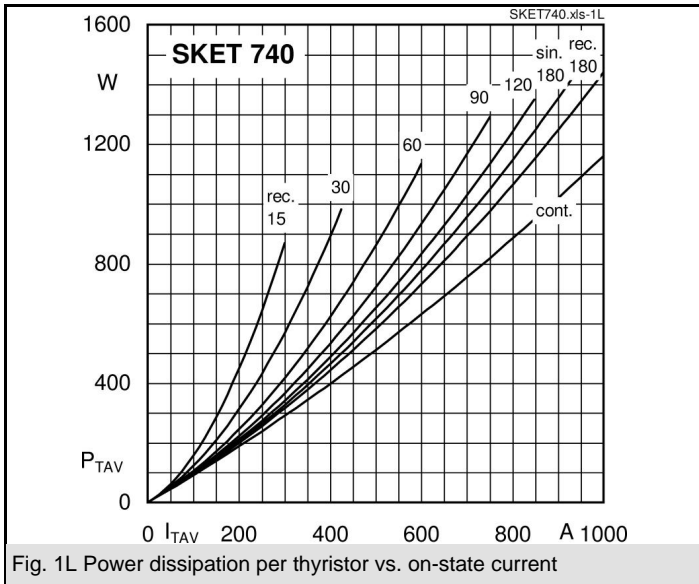
3) T_{vjmax} up to 130°C is allowable for overload conditions, max. time periode for the overload condition is 20s

V_{RSM} V	V_{RRM}, V_{DRM} V	$I_{TRMS} = 1500$ A (maximum value for continuous operation)	
1900	1800	$I_{TAV} = 740$ A (sin. 180; $T_c = 82$ °C)	
2300	2200	SKET 740/18G H4	
		SKET 740/22G H4	

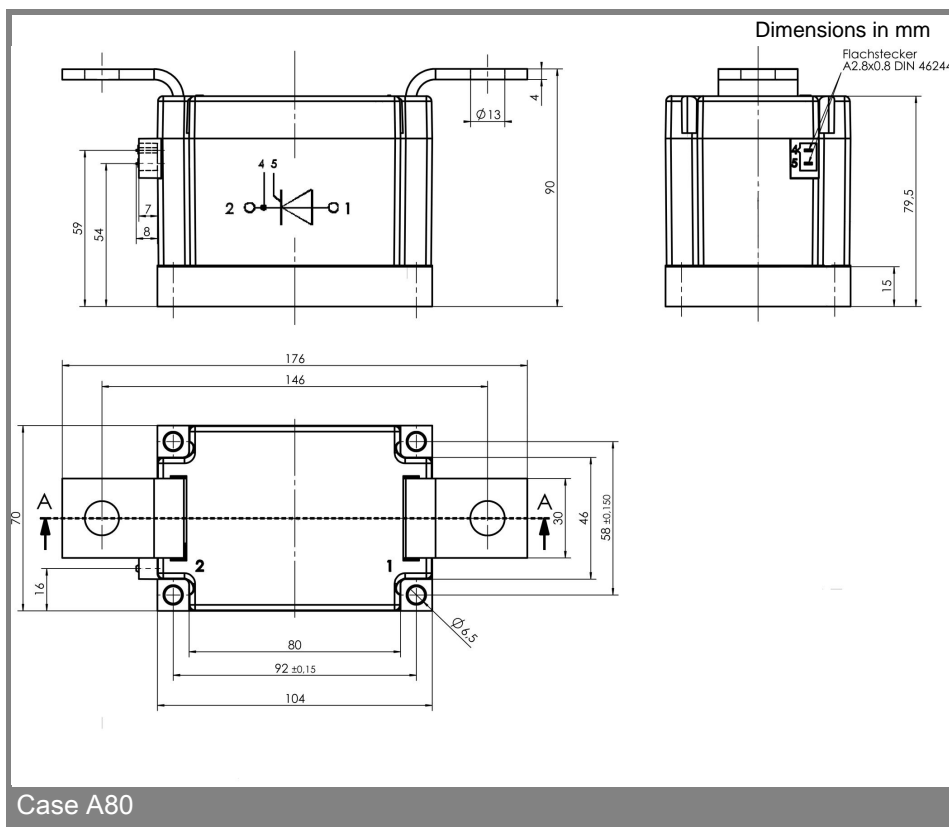
Symbol	Conditions	Values	Units
I_{TAV}	sin. 180; $T_c = 85$ (100) °C;	700 (490)	A
$I_{TAV(typ.)}^{1)}$	sin. 180; $T_c = 85$ (100) °C;	745 (520)	A
I_{TSM}	$T_{vj} = 25$ °C; 10 ms	36000	A
	$T_{vj} = 125$ °C; 10 ms	31000	A
i^2t	$T_{vj} = 25$ °C; 8,3 ... 10 ms	6480000	A ² s
	$T_{vj} = 125$ °C; 8,3 ... 10 ms	4805000	A ² s
V_T	$T_{vj} = 25$ °C; $I_T = 3000$ A	max. 1,65	V
$V_{T(typ.)}^{2)}$	$T_{vj} = 25$ °C; $I_T = 3000$ A	1,55	V
$V_{T(TO)}$	$T_{vj} = 125$ °C	max. 0,88	V
r_T	$T_{vj} = 125$ °C	max. 0,28	mΩ
$V_{T(TO)(typ.)}^{2)}$	$T_{vj} = 125$ °C	0,82	V
$r_{T(typ.)}^{2)}$	$T_{vj} = 125$ °C	0,25	mΩ
I_{DD}, I_{RD}	$T_{vj} = 125$ °C; $V_{RD} = V_{RRM}; V_{DD} = V_{DRM}$	max. 150	mA
t_{gd}	$T_{vj} = 25$ °C; $I_G = 1$ A; $di_G/dt = 1$ A/μs	1	μs
t_{gr}	$V_D = 0,67 * V_{DRM}$	2	μs
$(di/dt)_{cr}$	$T_{vj} = 125$ °C	max. 200	A/μs
$(dv/dt)_{cr}$	$T_{vj} = 125$ °C	max. 2000	V/μs
t_q	$T_{vj} = 125$ °C	200	μs
I_H	$T_{vj} = 25$ °C; typ. / max.	1000 / 2000	mA
I_L	$T_{vj} = 25$ °C; $R_G = 33$ Ω; typ. / max.	1500 / 2500	mA
V_{GT}	$T_{vj} = 25$ °C; d.c.	min. 3	V
I_{GT}	$T_{vj} = 25$ °C; d.c.	min. 300	mA
V_{GD}	$T_{vj} = 125$ °C; d.c.	max. 0,25	V
I_{GD}	$T_{vj} = 125$ °C; d.c.	max. 10	mA
$R_{th(j-c)}$	cont.	0,0405	K/W
$R_{th(j-c)}$	sin. 180	0,042	K/W
$R_{th(j-c)}$	rec. 120	0,043	K/W
$R_{th(c-s)}$		0,01	K/W
T_{vj}		- 40 ... + 125 ³⁾	°C
T_{stg}		- 40 ... + 125	°C
V_{isol}	a. c. 50 Hz; r.m.s.; 1s / 1 min.	4800 / 4000	V~
M_s	to heatsink	6 ± 15 %	Nm
M_t	to terminal	18 ± 15 %	Nm
a		5 * 9,81	m/s ²
m	approx.	2150	g
Case		A80	



SKET



SKET 740 THYRISTOR BRIDGE SCR BRIDGE



This technical information specifies semiconductor devices but promises no characteristics. No warranty or guarantee expressed or implied is made regarding delivery, performance or suitability.