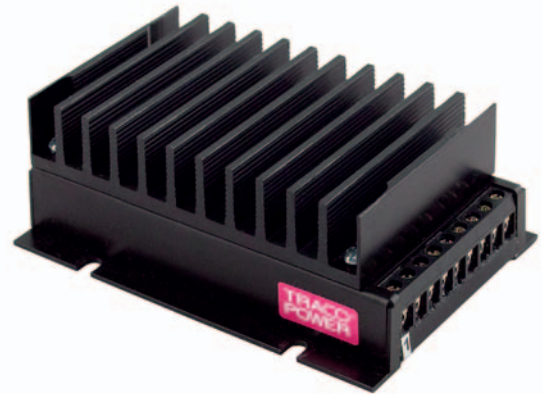


Features

- ◆ Shielded metal case with screw terminals
- ◆ Compact dimensions: 98 x 52 x 34 mm
- ◆ Ultra-wide 4:1 input voltage range
- ◆ Very high efficiency up to 87%
- ◆ Constant current output characteristic for battery load applications
- ◆ Optional with input filter to meet EN55022 class B
- ◆ Overtemperature protection
- ◆ Wide Operating temperature range: -40°C to +75°C
- ◆ Reverse input protection
- ◆ Under voltage lock-out
- ◆ I/O isolation 2250 VDC
- ◆ Easy chassis and wall mounting
- ◆ 3-year product warranty



The TEP-150WI Series is a family of high power density dc-dc converter modules with ultra-wide 4:1 input voltage range which come in an ultra-compact metal case with screw terminal connection. Suitable for a wide range of applications, the TEP-150WI series was particularly designed with industrial applications in mind. The modules have flanges for easy chassis or wall mounting. A very high efficiency allows an operating temperature up to +50°C with natural convection cooling. Further features include adjustable output voltage with constant current characteristic for battery charger applications.

Models

Order code*	Input voltage	Output voltage	Output current max.	Efficiency typ.
TEP 150-2412WI	9 – 36 VDC (24 VDC nominal)	12 VDC	12.5 A	86 %
TEP 150-2413WI		15 VDC	10 A	86 %
TEP 150-2415WI		24 VDC	6.3 A	87 %
TEP 150-2416WI		28 VDC	5.4 A	87 %
TEP 150-2418WI		48 VDC	3.2 A	86 %
TEP 150-4812WI	18 – 75 VDC (48 VDC nominal)	12 VDC	12.5 A	87 %
TEP 150-4813WI		15 VDC	10 A	87 %
TEP 150-4815WI		24 VDC	6.3 A	88 %
TEP 150-4816WI		28 VDC	5.4 A	88 %
TEP 150-4818WI		48 VDC	3.2 A	87 %

Options

suffix -F	Modules with input filter to meet EN 55022 class B, see page 5
on demand	Negative (passive = Off) remote On/Off function (standard is passive = On) Models with input voltage range 43 – 160 VDC

Input Specifications

Input current (full load)	24 Vin models: 7.5 A typ. 48 Vin models: 3.7 A typ.
Input current (no load)	24 Vin, 12 – 24 VDC models: 80 mA typ. 24 Vin, 28 – 48 VDC models: 130 mA typ. 48 Vin, 12 – 24 VDC models: 60 mA typ. 48 Vin, 28 – 48 VDC models: 70 mA typ.
Start-up voltage / under voltage lock-out	24 Vin models: 8.8 VDC / 8.2 VDC typ. 48 Vin models: 17.6 VDC / 16.2 VDC typ.
Surge voltage (1sec. max.)	24 Vin models: 50 V 48 Vin models: 100 V
Conducted noise (input)	EN 55022 class A, FCC part 15, class A without external components. optional filter for class B – suffix F
ESD (electrostatic discharge)	EN 61000-4-2, air ± 8 kV, contact ± 6 kV, perf. criteria A
Radiated immunity	EN 61000-4-3, 10 V/m, perf. criteria A
Fast transient / Surge (with input capacitor for models without filter module)	EN 61000-4-4, ± 2 kV, perf. criteria A EN 61000-4-5, ± 1 kV perf. criteria A
– Input capacitor:	24 VDC models: Nippon chemi-con KY 470 μ F, 50 V, ESR 45 mOhm 48 VDC models: Nippon chemi-con KY 220 μ F, 100 V, ESR 48 mOhm models with filter module (suffix F): no input capacitor required
Conducted immunity	EN 61000-4-6, 10 Vrms, perf. criteria A
Reverse voltage protection	parallel diode (input fuse required)
Recommended input fuse (slow blow)	24 Vin models: 15 A 48 Vin models: 10 A

Output Specifications

Voltage set accuracy	± 1 %
Output voltage adjustment	+20 % by external resistor (see application note)
Regulation	– Input variation Vin min. to Vin max. 0.2 % max. – Load variation 0 – 100 % 0.4 % max.
Temperature coefficient	± 0.02 %/K
Minimum load	not required
Ripple and noise (20 MHz Bandwidth)	12 & 15 VDC models: 100 mVpk-pk max. 24 & 28 VDC models: 200 mVpk-pk max. 48 VDC models: 350 mVpk-pk max.
Start up time (nominal Vin and constant resistive load)	25 ms typ. (at power On or remote On)
Transient response (25 % load step change)	200 μ s typ.
Output current	– Constant voltage (CV) up to 110 % of Iout max. – Constant current (CC) above 110 % of Iout max.
Over voltage protection	at 125 – 140 % of Vout nom.
Short circuit protection	indefinite, automatic recovery
Capacitive load	12 VDC models: 40'000 μ F max. 15 VDC models: 26'000 μ F max. 24 VDC models: 10'000 μ F max. 28 VDC models: 7'600 μ F max. 48 VDC models: 2'600 μ F max.

General Specifications

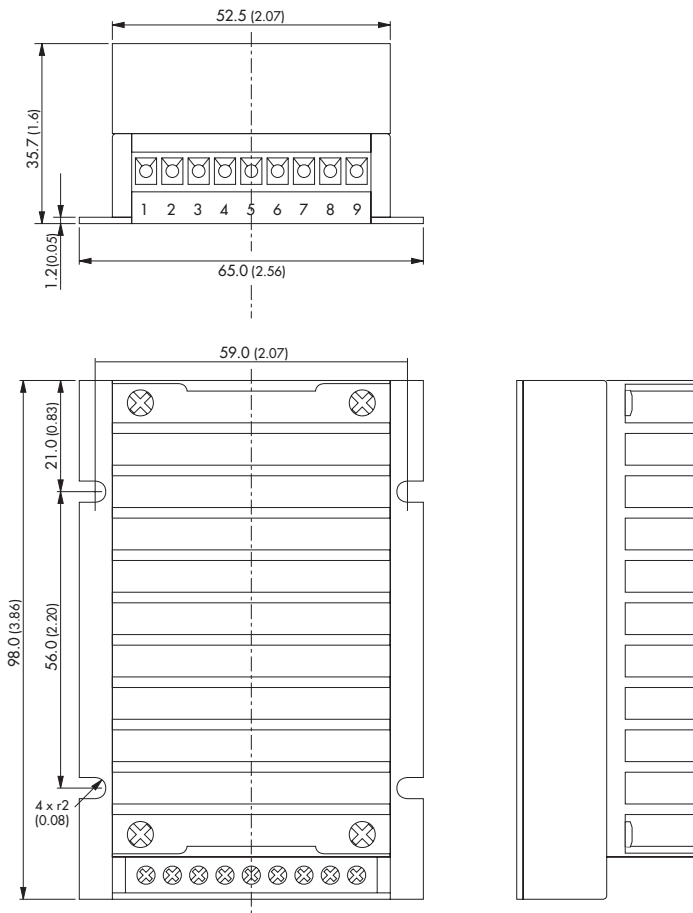
Temperature ranges	<ul style="list-style-type: none"> - Operating - Case temperature - Storage 	-40°C to +75°C +100°C max. -55°C to +125°C
Thermal consideration	<ul style="list-style-type: none"> - Mounting surface - Derating and temperature test point 	Optimize thermal coupling to heat conducting surface. Not to mount on flammable surface! see application note
Over temperature protection		at 110°C (auto restart)
Vibration and thermal shock		acc. MIL-STD-810F
Humidity (non condensing)		95 % rel H max.
Reliability, calculated MTBF (MIL-HDBK-217F, at +40°C, ground benign)		>135'000 h
Isolation voltage (60 sec.)	<ul style="list-style-type: none"> - Input/Output - Input/Case - Output/Case 	2250 VDC (functional insulation) 1500 VDC 1500 VDC
Isolation capacitance	- Input/Output	3500 pF max.
Isolation resistance	- Input/Output (500 VDC)	>1 GOhm min.
Switching frequency		220 – 330 kHz depending on model (puls width modulation)
Safety standards		UL 60950-1, IEC/EN 60950-1
Safety approvals	<ul style="list-style-type: none"> - UL/cUL 60950-1 - CB test certificate (IEC 60950-1) 	www.ul.com -> certifications -> File e188913 www.tracopower.com/products/tep150wi-cb.pdf
Remote On/Off	<ul style="list-style-type: none"> - positive logic (standard) - negative logic (option -N) - Off idle current: 	<ul style="list-style-type: none"> - On: 3 to 12 VDC or open circuit - Off: 0 to 1.2 VDC or short circuit pin 5 and 3 - On: 0 to 1.2 VDC or short circuit pin 5 and 3 - Off: 3 to 12 VDC or open circuit 3 mA
Environmental compliance	<ul style="list-style-type: none"> - Reach - RoHS 	www.tracopower.com/products/tep150wi-reach.pdf RoHS directive 2002/95/EC

Physical Specifications

Casing material	metal
Potting material	silicon (UL 94V-0 rated)
Case protection	IP 50 (in accordance to IEC/EN60529)
Weight	300 g (10.6 oz)

Application note: www.tracopower.com/products/tep150wi-application.pdf

Outline Dimensions

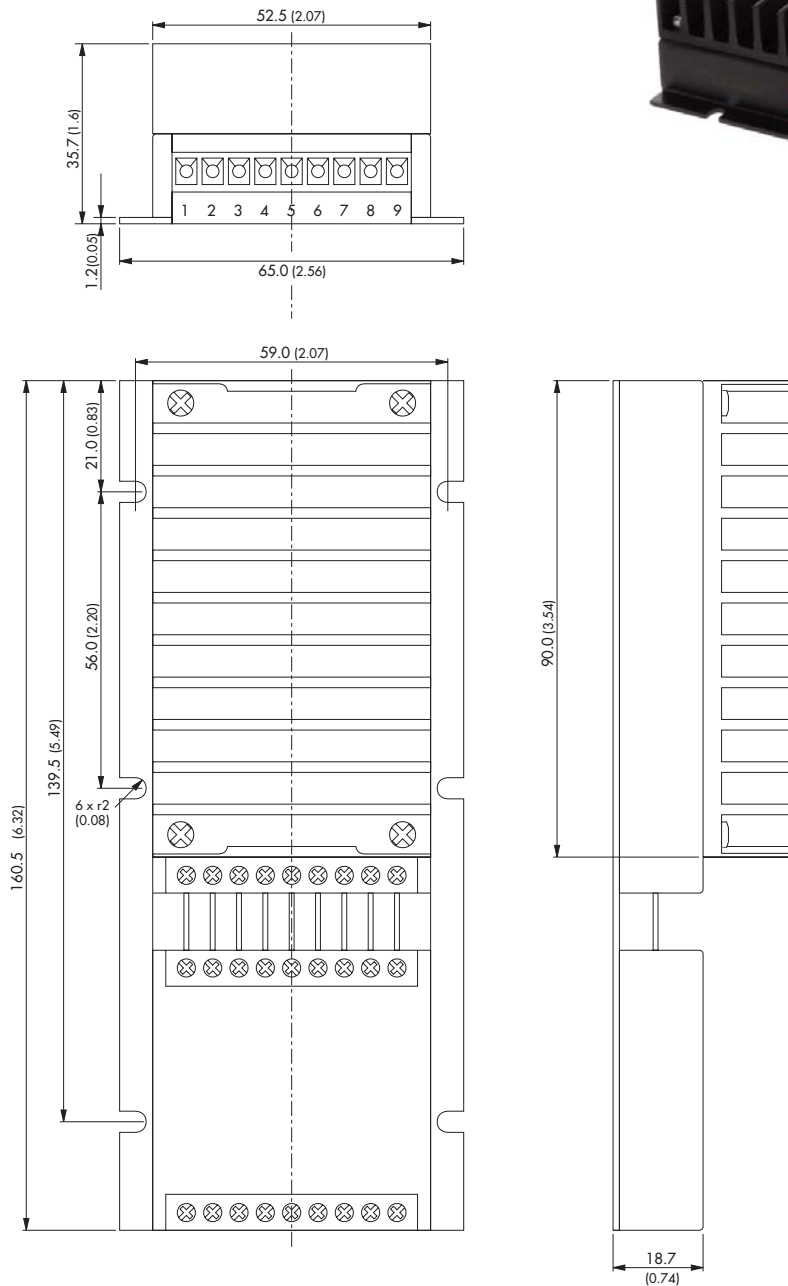


Pin Connection		
pin	function	recommended wire
1	+ Vin	14 - 16 AWG
2	+ Vin	14 - 16 AWG
3	- Vin	14 - 16 AWG
4	- Vin	14 - 16 AWG
5	Remote On/Off	14 - 24 AWG
6	+ Vout	14 - 16 AWG
7	- Vout	14 - 16 AWG
8	Trim	14 - 24 AWG
9	Trim	14 - 24 AWG

Weight: 300g (10.6 oz)

Dimensions in [mm], () = Inch
 Mounting slot tolerance: ± 0.25 (± 0.001)
 Case tolerances: ± 0.5 (± 0.02)

Outline Dimensions



Pin Connection		
pin	function	recommended wire
1	+ Vin	14 - 16 AWG
2	+ Vin	14 - 16 AWG
3	- Vin	14 - 16 AWG
4	- Vin	14 - 16 AWG
5	Remote On/Off	14 - 24 AWG
6	+ Vout	14 - 16 AWG
7	- Vout	14 - 16 AWG
8	Trim	14 - 24 AWG
9	Trim	14 - 24 AWG

Weight: 435g (15.3 oz)

Dimensions in [mm], () = Inch
Mounting slot tolerance: ± 0.25 (± 0.001)
Case tolerances: ± 0.5 (± 0.02)

Specifications can be changed any time without notice.