

TINA-MX-6 lenses for CREE MX-6 LEDs



- Designed & optimized for Cree MX-6 series of LEDs
- Lens material optical grade PC with high UV and temperature resistance (130°C/220°F). Allows use of high current and temperature conditions
- Best available optical efficiency, over 90%, with an extremely good cutoff of light
- Fastening to heat sink with a PU foam adhesive tape of automotive grade (included)
- Compact dimensions 16.1 x 10.1 mm.

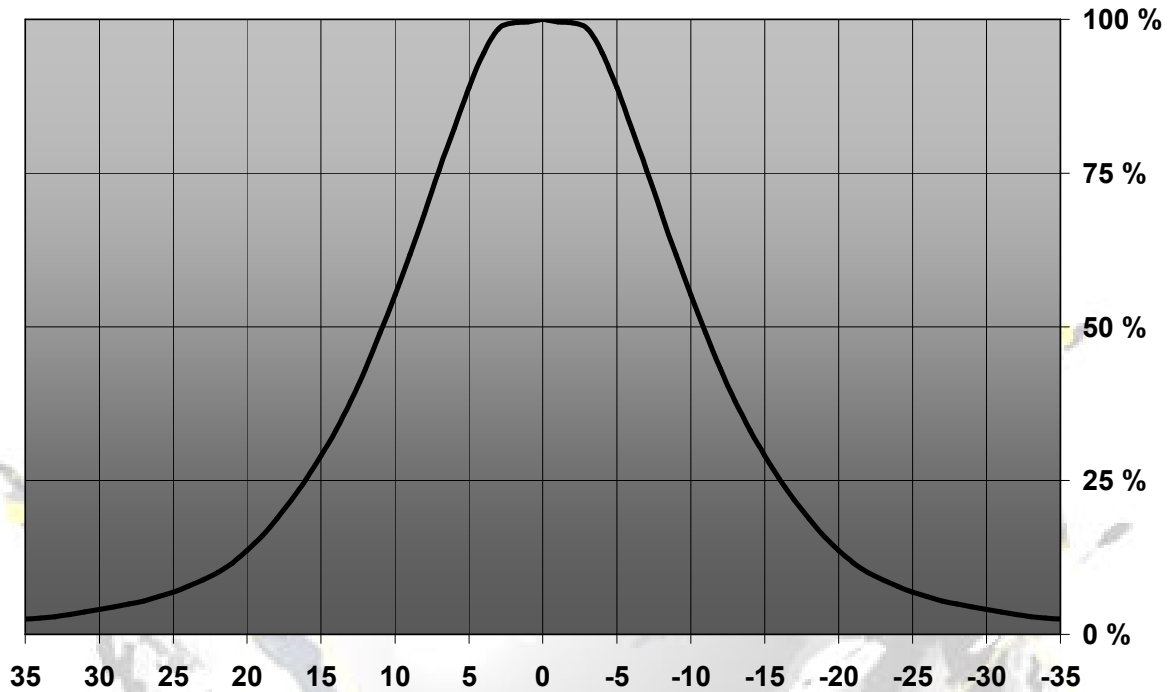
LENS TYPES

NAME	ORDERING CODE	FWHM Angle
Tina-MX-6 REAL SPOT	FA10888_Tina-MX6-RS	±11°
Tina-MX-6 DIFFUSER	FA10646_Tina-MX6-D	±11.5°
Tina-MX-6 MEDIUM	FA10647_Tina-MX6-M	±17°
Tina-MX-6 OVAL	FA11201_Tina-MX6-O	±N/A°
Tina-MX-6 WW	FA10839_Tina-MX6-W	±22°
Tina-MX-6 WW	FA10901_Tina-MX6-WW	±30°

© Ledil Oy – PRELIMINARY - Subject to change without prior notice

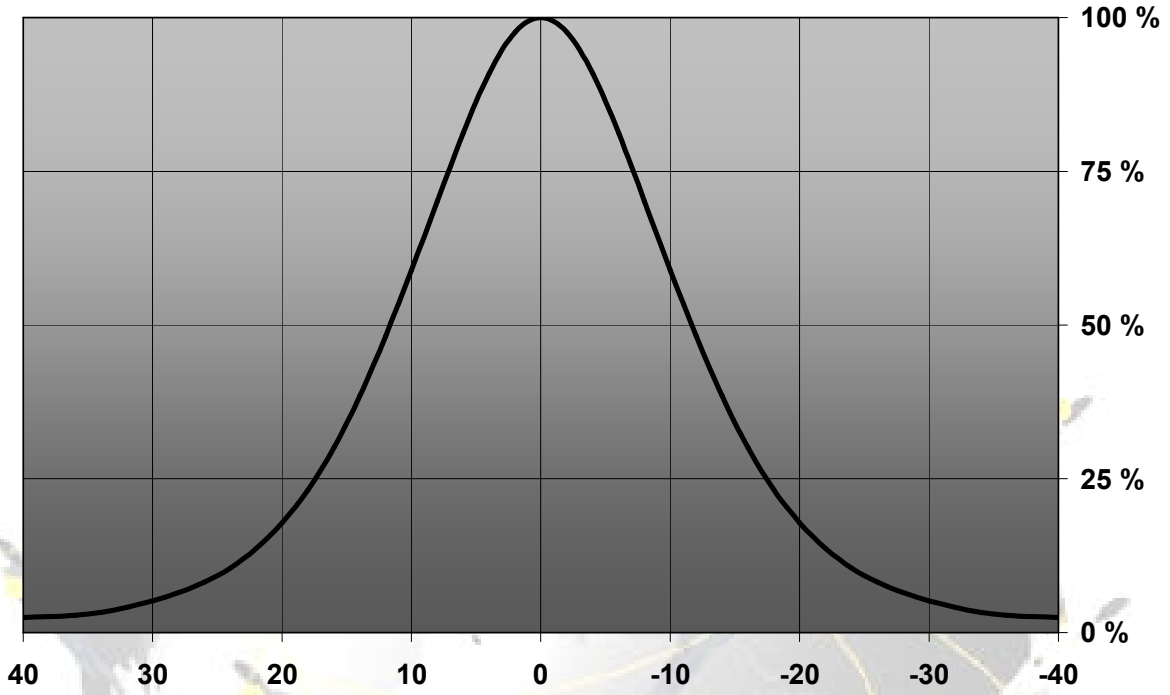
MEASUREMENTS

Relative Intensity of FA10888_Tina-MX6-RS

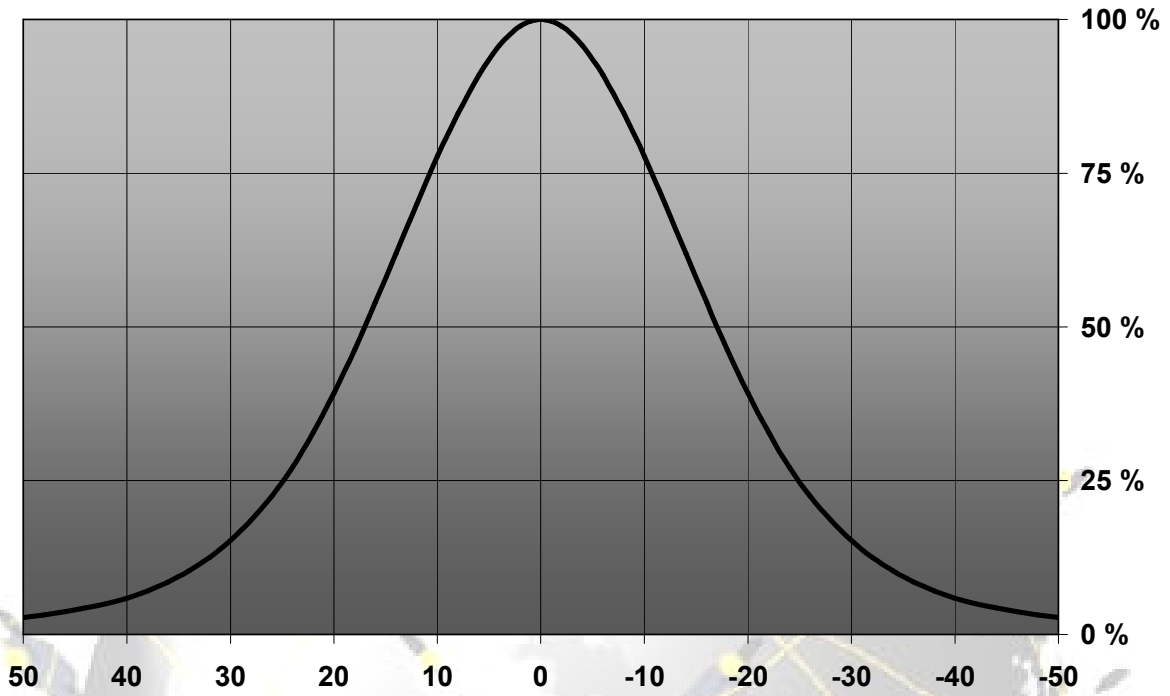


© Ledil Oy – PRELIMINARY - Subject to change without prior notice

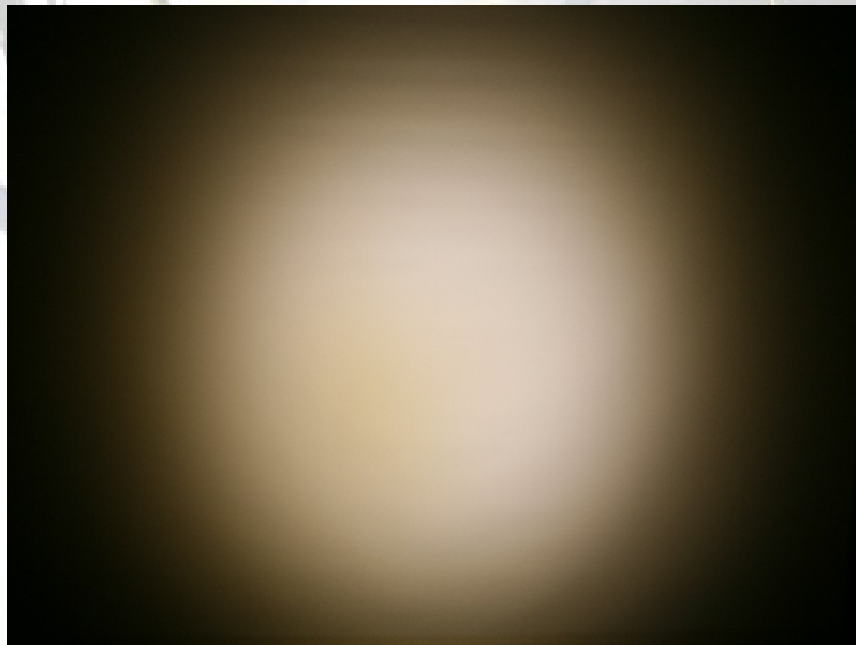
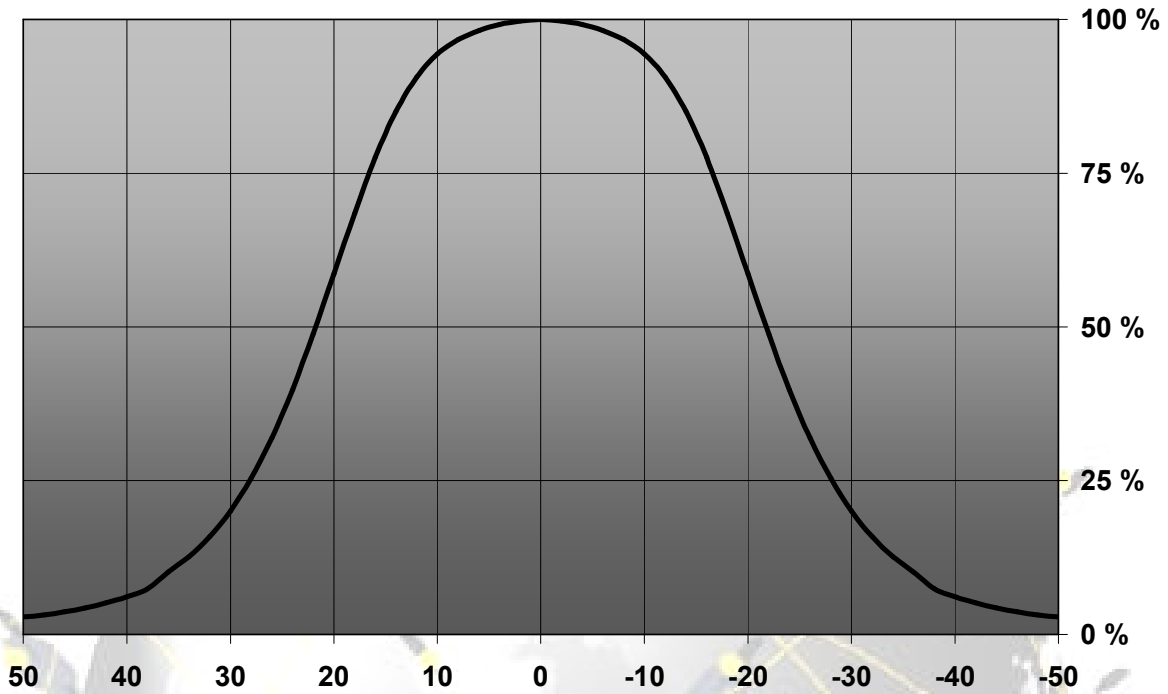
Relative Intensity of FA10646_Tina-MX6-D



Relative Intensity of FA10647_Tina-MX6-M

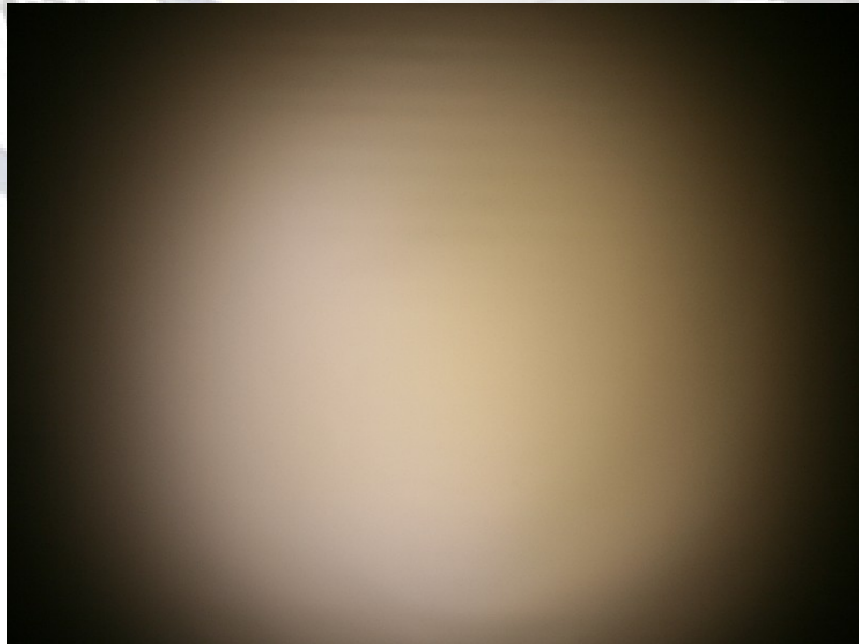
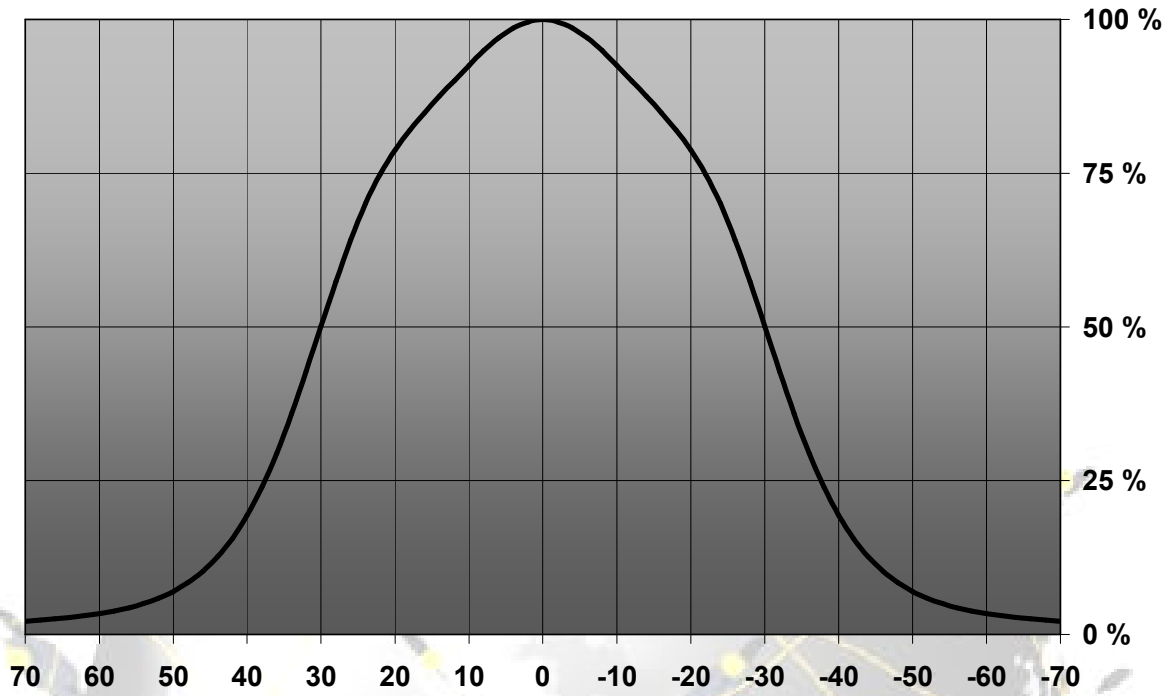


Relative Intensity of FA10839_Tina-MX6-W

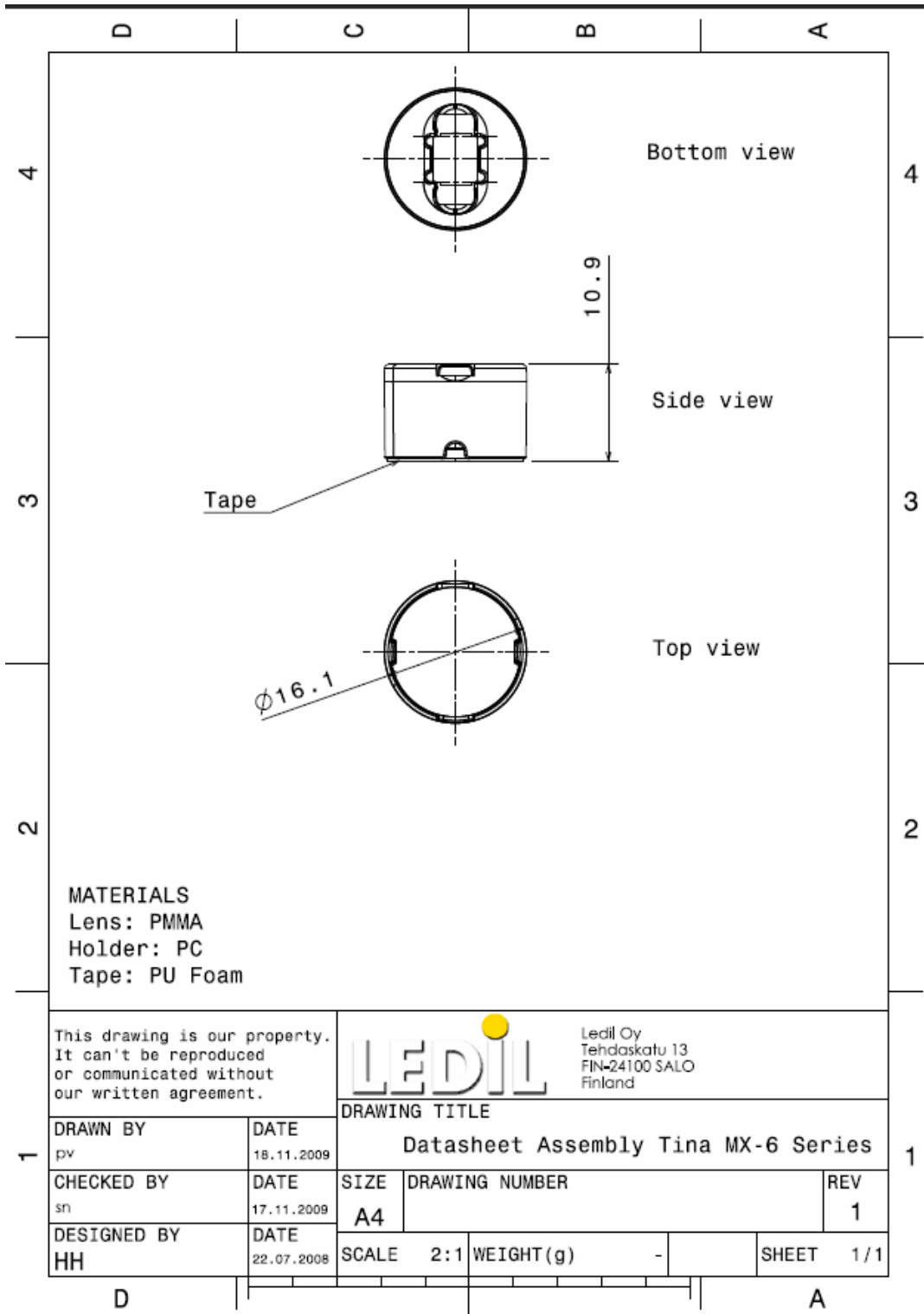


© Ledil Oy – PRELIMINARY - Subject to change without prior notice

Relative Intensity of FA10901_Tina-MX6-WW



DRAWINGS



© Ledil Oy – PRELIMINARY - Subject to change without prior notice