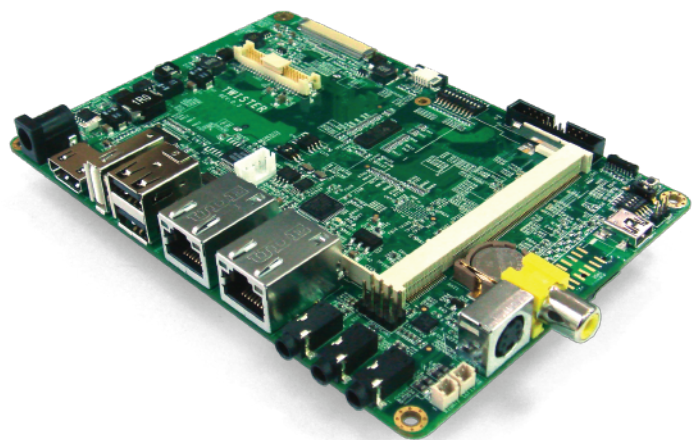


# Twister

## Interface Base Board for TAM-3517 Series



### Key Features

Complete TAM-3517 multimedia development board compatible with any display through LVDS, TTL, HDMI/DVI, VGA, S-Video interfaces.

Expand storage options with USB, SATA and micro-SD card slot.

Record and play back audio and video easily over the Composite, S-video interfaces, audio jacks and speakers.

Dual LAN, CAN bus, RS-232, RS-422/485, SPI, I<sup>2</sup>C to control remote or external devices.

### Specifications

#### System

System on module

Compatible with TAM-3517 by a 200 pin SO-DIMM connector  
Dual 10/100 Mbps by local bus  
onboard RTC with backup battery

Network  
RTC

#### Interfaces

Connectors

3 standard-USB hosts  
1 mini-USB device/ OTG  
Dual RJ-45 LAN connector  
micro-SD card slot  
SATA connector for 2.5" HDD  
3.5 mm stereo audio in/out  
3.5 mm microphone  
2W amplified speaker  
18 bit LVDS and touchpanel  
TTL LCD & touchpanel for 4.3" LCD  
TTL LCD & touchpanel for 7" LCD  
RCA composite in, S-video out  
DVI-D signal by HDMI connector  
IR sensor

Expansion header

VGA by pinheader, CAN bus, JTAG  
SPI, RS-232, RS-422/485, UART,  
I<sup>2</sup>C, GPIO

#### Power

Power requirements 12VDC

#### Environmental and Mechanical

Temperature

Commercial: 0° to 70° C  
Extended: -20° to 70° C  
Industrial: -40° to 85° C

Humidity

10-90%

Dimensions

147 x 102 mm (5¾ x 4 inch)

MTBF

>100,000 hours

Weight

92 grams

Shock

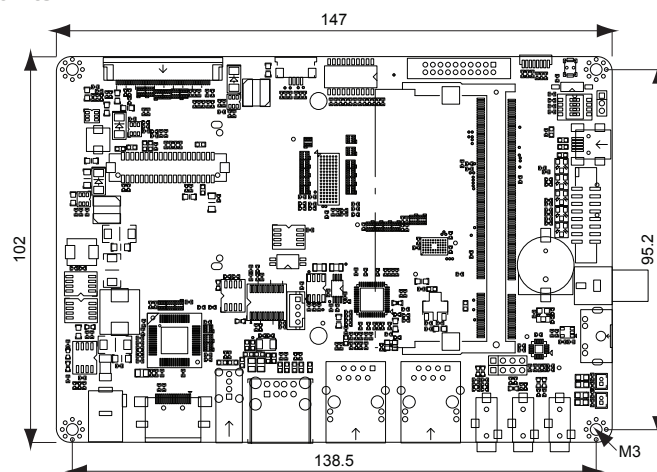
50G / 25ms

Vibration

20G / 0-600 Hz

### Dimensions

units in mm



### Order Information

Twister

Base board for TAM series

Twister pack

TAM-3517W & Twister & 4.3" LCD  
60 Watt 12VDC Adaptor

# TechNexion

Phone: +886-2-8227-3585

E-mail: sales@technexion.com

Web: <http://www.technexion.com>

