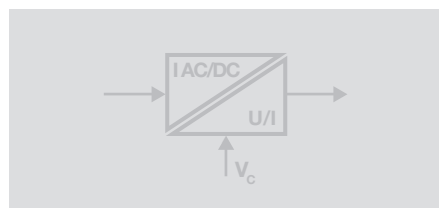
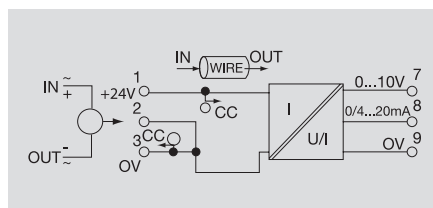


Analogue output

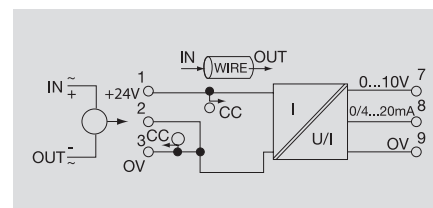
- Galvanic isolation between input / output
- Input and output ranges adjustable via DIP switch



5/10 A AC/DC



20/25/30 A AC/DC



Technical data

Input	
Input current	0...5 A AC/DC / 0...10 A AC/DC
Input frequency	0...2 kHz (True RMS)
Max. current	Depends on wire cross-section
Voltage of measuring circuit	400 V AC, > 400V AC depending on wire insulation
Sensor	Hall sensor (internal)
Diameter of cable feed-through	8 mm
Output	
Output current / Output voltage	0(4)...20 mA / 0...10 V
Offset current	max. 150 µA
Output signal limit	Approx. 13 V or 24 mA
Load impedance, voltage/current	≥ 1 kΩ / ≤ 600 Ω
Step response time	typ. 700 ms
Accuracy	1 % FSR
Temperature coefficient	≤ 650 ppm/K
Status indicator	LED ON: OK; FLASHING: signal out of range; LED OFF: Error
General data	
Supply voltage	24 V DC ± 10 %
Current consumption	50 mA @ I _{OUT} = 20 mA
Current-carrying capacity of cross-connect.	≤ 2 A
Ambient temperature / Storage temperature	0 °C...+50 °C / -20 °C...+70 °C
Default setting	0.5 A, 4...20 mA
Approvals	cULus; CE
Insulation coordination	
Standards	EN 50178 (secure separation)
EMC standards	EN 55011, EN 61000-6
Rated voltage	300 V
Impulse withstand voltage	6 kV
Pollution severity	2
Overtoltage category	III
Clearance & creepage distances	≥ 5.5 mm
Insulation voltage	4 kV _{eff} / 5 s
Dimensions	
Clamping range (nominal / min. / max.)	mm ²
Length x width x height	mm
Note	

Screw connection		Tension clamp connection			
2.5 / 0.5 / 2.5	1.5 / 0.5 / 2.5	2.5 / 0.5 / 2.5	1.5 / 0.5 / 2.5		
92.4 / 22.5 / 112.4	92.4 / 22.5 / 112.4	92.4 / 22.5 / 112.4	92.4 / 22.5 / 112.4		
Type		Qty.		Order No.	
WAS2 CMA 5/10A uc		1		8526610000	
WAZ2 CMA 5/10A uc		1		8526620000	

Screw connection		Tension clamp connection			
2.5 / 0.5 / 2.5	1.5 / 0.5 / 2.5	2.5 / 0.5 / 2.5	1.5 / 0.5 / 2.5		
92.4 / 22.5 / 112.4	92.4 / 22.5 / 112.4	92.4 / 22.5 / 112.4	92.4 / 22.5 / 112.4		
Type		Qty.		Order No.	
WAS2 CMA 20/25/30A uc		1		8545830000	
WAZ2 CMA 20/25/30A uc		1		8545840000	

Ordering data

Screw connection	
Tension clamp connection	

Type	Qty.	Order No.
WAS2 CMA 5/10A uc	1	8526610000
WAZ2 CMA 5/10A uc	1	8526620000

Type	Qty.	Order No.
WAS2 CMA 20/25/30A uc	1	8545830000
WAZ2 CMA 20/25/30A uc	1	8545840000

Note

Accessories

Cross-connectors for power supplies and markers – refer to Accessories

Cross-connectors for power supplies and markers – refer to Accessories