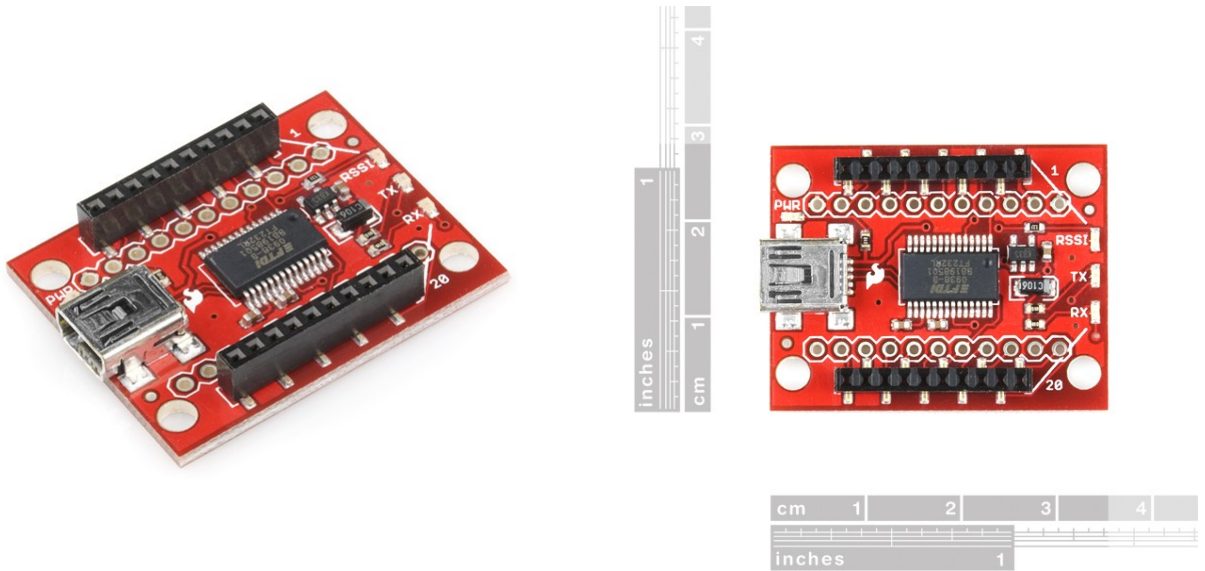


SparkFun

XBee Explorer USB

sku: WRL-08687



Description: This is a simple to use, USB to serial base unit for the XBee line. This unit works with all XBee modules including the Series 1 and Series 2.5, standard and Pro version. Plug the unit into the XBee Explorer, attach a mini USB cable, and you will have direct access to the serial and programming pins on the XBee unit. You get the red board only. XBee modules and USB cable sold below.

Documents:

- [Schematic](#)
- [Eagle Files](#)
- [X-CTU Software](#)
- [XBee Introduction and Buying Guide](#)
- [Configuring XBees Tutorial](#)
- [USB FTDI Drivers for Windows, Linux, Mac](#)