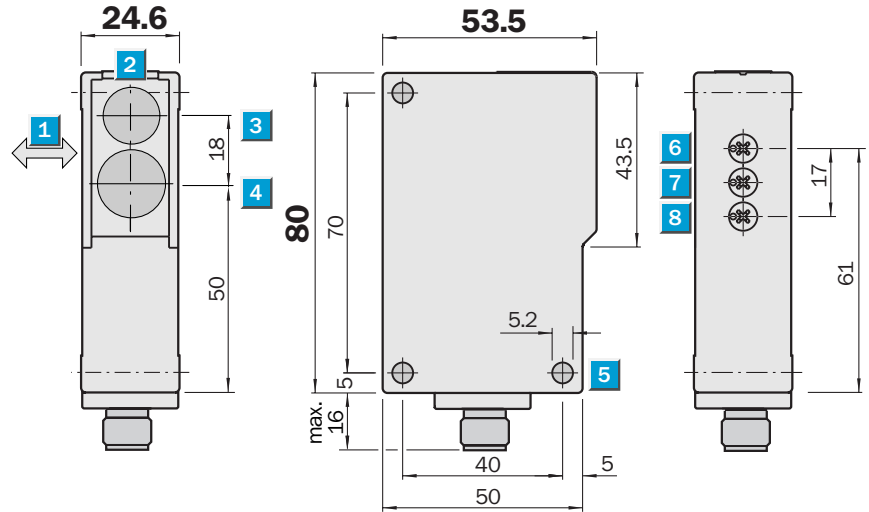


Scanning distance
 100...1000 mm
 Photoelectric proximity switches

- Red light
- Adjustable background suppression
- Selectable time delay

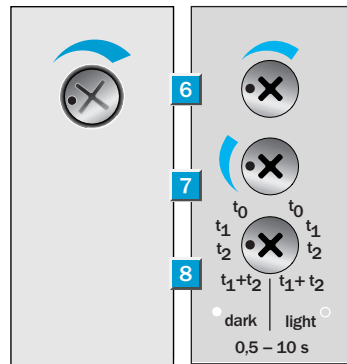


Dimensional drawing



Adjustments possible

WT 27-2S 132	WT 27-2R 630
WT 27-2S 730	



- 1 Standard direction of the material being scanned
- 2 LED signal strength indicator
- 3 Optical axis, sender
- 4 Optical axis, receiver
- 5 Mounting hole \varnothing 5.2 mm
- 6 Sensitivity adjustment
- 7 Time control
- 8 Time delay selector switch
- Light-switching
- Dark-switching

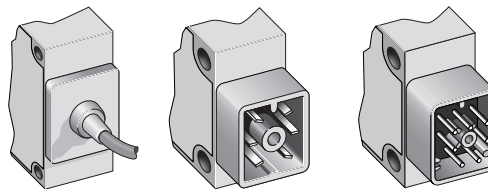
Switch-selectable time delay

0.5 – 10 s

- t_0 Without time delay
- t_1 OFF-delay from trailing edge of object
- t_2 ON-delay from leading edge of object
- $t_1 + t_2$ OFF- and ON-delay

Connection type

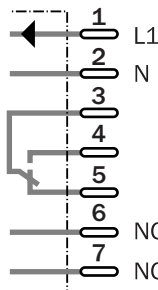
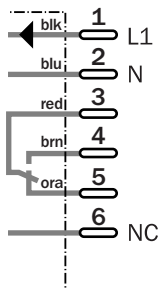
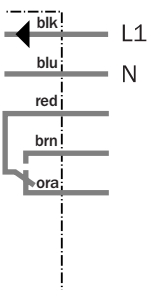
WT 27-2S 132	WT 27-2R 630	WT 27-2S 730
--------------	--------------	--------------



5 x 0.25 mm²

6-pin, Q6, AC/UC

7-pin, Q7, AC/UC



Accessories

- Connectors
- Mounting systems



Technical data		WT 27-2	S 132	R 630 ⁷⁾	S 730
Scanning distance	100...1000 mm, adjustable				
Light source¹⁾, light type	LED, red light				
Light spot diameter	Approx. 15 mm at 500 mm				
Supply voltage V_S	24...240 V UC (+ 10 %, - 20 %)				
Current consumption	< 2 VA				
Switching outputs	SPDT, isolated ²⁾				
Max. switching voltage	250 V AC / 120 V DC				
Max. switching current	4 A / 240 V AC or 24 V DC				
Max. switching capacity	AC 1000 VA / DC 100 W				
Response time	< 6 ms				
Max. switching frequency ³⁾	10/s				
Delay range	0.5...10 s				
Connection types	Cable ⁴⁾ , 2 m				
	Plug				
VDE protection class⁵⁾	□				
Circuit protection⁶⁾	A, C				
Enclosure rating	IP 67				
	IP 65				
Ambient temperature T_A	Operation - 40 °C...+ 60 °C				
	Storage - 40 °C...+ 75 °C				
Weight	Approx. 100 g				
Housing material	ABS				

1) Average service life 100,000 h at T_A = + 25 °C

2) Provide suitable spark suppression for inductive and capacitive loads

3) With light/dark ratio 1:1

4) Do not bend below 0 °C

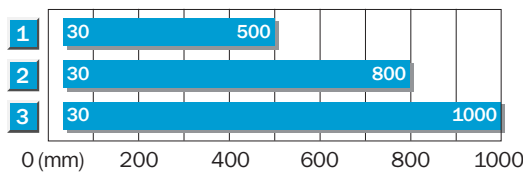
5) Reference voltage 250 V AC

6) A = V_S connections reverse-polarity protected

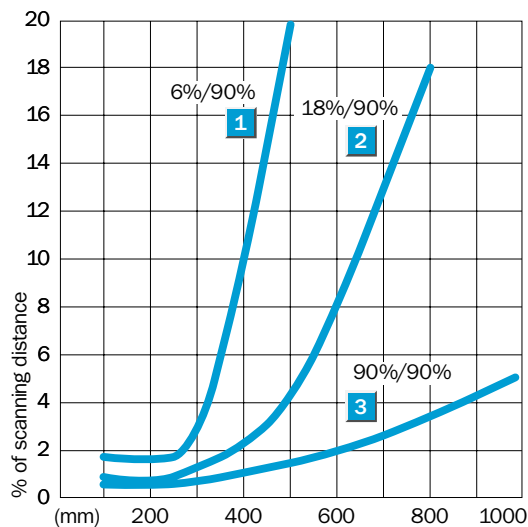
C = Interference pulse suppression

7) Relay contacts are separate from the power supply by basis insulation of 3 mm

Scanning distance



- 1 Scanning distance on black, 6 % remission
- 2 Scanning distance on grey, 18 % remission
- 3 Scanning distance on white, 90 % remission



Order information

Type	Part no.
WT 27-2S 132	1 015 960
WT 27-2R 630	1 015 092
WT 27-2S 730	1 015 097