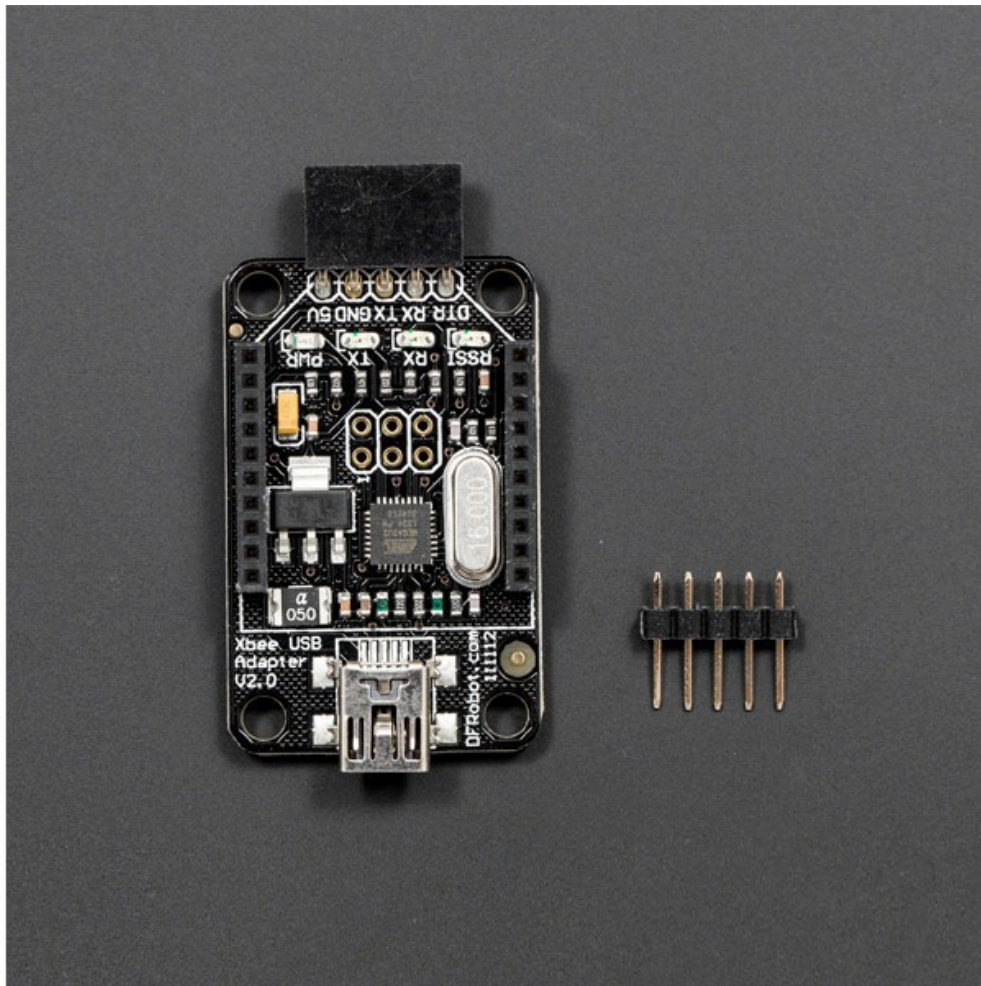


XBee USB Adapter V2



INTRODUCTION

The XBee USB Adapter V2 is an update version from DFRobot. It features an Atmega8U2 programmed as a USB-to-serial converter, the same chip found on the Arduino Uno. The Atmega8U2 firmware uses the standard USB COM drivers, and no external driver is needed. However, on Windows, a .inf file is required. It's compatible with all the products using XBee socket. It provides a faster and stable wireless communication for your projects.

The DFRobot Xbee USB adapter is used for the XBee module configuration parameters to facilitate wireless data transmission. It can be easily connected to a PC via mini USB cable. Further, it can be used with XBee-setting support software X-CTU. It can also be used as a USB-TTL adapter.

It is compatible with:

- all XBee modules including the Series 1 and Series 2.5, standard and Pro version
- Bluetooth Bee
- DFRobot Wireless Programming Module

SPECIFICATION

- ZigBee X-CTU Compatible
- mini USB cable
- USB-TTL adapter function
- Voltage: +5V(USB Power)

DOCUMENTS

- [Wiki](#)
- [Schematic](#)
- [X-CTU Software](#)
- [USB Drivers](#)
- [Xbee configuration tutorial](#)
- [Arduino xbee library](#)

SHIPPING LIST

- XBee USB Adapter V2 x1