

PLEASE CHECK WWW.MOLEX.COM FOR LATEST PART INFORMATION

Part Number: **0510210600**
Status: **Active**
Overview: picoblade
Description: 1.25mm (.049") Pitch PicoBlade™ Wire-to-Wire and Wire-to-Board Housing, Female, 6 Circuits

Documents:

| | |
|--|--|
| 3D Model | Product Specification PS-51021-022 (PDF) |
| Drawing (PDF) | Product Specification PS-51021-023 (PDF) |
| Product Specification PS-51021-001 (PDF) | Product Specification PS-51021-025 (PDF) |
| Product Specification PS-51021-002 (PDF) | Product Specification PS-51021-026 (PDF) |
| Product Specification PS-51021-009 (PDF) | Product Specification PS-51021-027 (PDF) |
| Product Specification PS-51021-010 (PDF) | Product Specification PS-51021-028 (PDF) |
| Product Specification PS-51021-011 (PDF) | RoHS Certificate of Compliance (PDF) |

Agency Certification

| | |
|-----|---------|
| CSA | LR19980 |
| UL | E29179 |

General

| | |
|----------------|------------------|
| Product Family | Crimp Housings |
| Series | <u>51021</u> |
| MolexKits | Yes |
| Overview | <u>picoblade</u> |
| Product Name | PicoBlade™ |

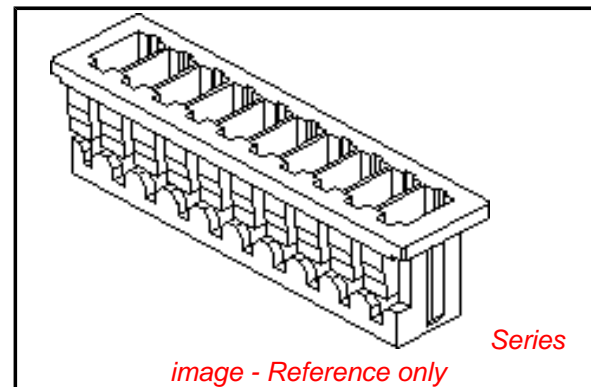
Physical

| | |
|-------------------------------|----------------|
| Circuits (maximum) | 6 |
| Color - Resin | Natural |
| Flammability | 94V-0 |
| Gender | Female |
| Glow-Wire Compliant | No |
| Lock to Mating Part | Yes |
| Material - Resin | Polyester |
| Number of Rows | 1 |
| Packaging Type | Bag |
| Panel Mount | No |
| Pitch - Mating Interface (in) | 0.049 In |
| Pitch - Mating Interface (mm) | 1.25 mm |
| Stackable | No |
| Temperature Range - Operating | -40°C to +85°C |

Material Info

Reference - Drawing Numbers

| | |
|-------------------------|---|
| Packaging Specification | SPK-51021 |
| Product Specification | PS-51021-001, PS-51021-002, PS-51021-009, PS-51021-010, PS-51021-011, PS-51021-022, PS-51021-023, PS-51021-025, PS-51021-026, PS-51021-027, PS-51021-028, RPS-51021-001, RPS-51021-002, RPS-51021-003, RPS-51021-004, RPS-51021-006, RPS-51021-007, RPS-51021-008, RPS-51021-009, RPS-51021-010, RPS-51021-011, RPS-51021-013, RPS-51021-014, RPS-51021-018, RPS-51021-019, RPS-51021-020, RPS-51021-021, RPS-51021-023, RPS-51021-024, RPS-51021-025, RPS-51021-028, RPS-51021-030, RPS-51021-031, |



EU RoHS

ELV and RoHS Compliant
REACH SVHC Contains SVHC: No
Halogen-Free Status

China RoHS



Not Halogen-Free

Need more information on product environmental compliance?

Email productcompliance@molex.com
 For a multiple part number RoHS Certificate of Compliance, [click here](#)

Please visit the [Contact Us](#) section for any non-product compliance questions.

Search Parts in this Series

[51021Series](#)

Mates With

[51047 Crimp Housing](#), [53047 PCB Header](#), [53048 PCB Header](#), [53261 PCB Header](#), [53398 PCB Header](#)

Use With

[50058 crimp terminal](#), [50079 crimp terminal](#)

RPS-51021-032, RPS-51021-033, RPS-51021-034,
RPS-51021-037, RPS-51021-038, RPS-51021-039,
RPS-51021-040, RPS-51021-041, RPS-51021-042,
RPS-51021-043, RPS-51021-044, RPS-51021-045,
RPS-51021-046, RPS-51021-047, RPS-51021-048,
RPS-51021-051, RPS-51021-052, RPS-51021-053,
RPS-51021-054, RPS-51021-055, RPS-51021-056,
RPS-51021-057, RPS-51021-058, RPS-51021-059,
RPS-51021-060, RPS-51021-061, RPS-51021-062,
RPS-51021-063, RPS-51021-064, RPS-51021-065,
RPS-51021-066, RPS-51021-067, RPS-51021-068,
RPS-51021-071, RPS-51021-072, RPS-51021-073,
RPS-51021-074, RPS-51021-076, RPS-51021-077,
RPS-51021-078, RPS-51021-079, RPS-51021-081,
RPS-51021-084, RPS-51021-085, RPS-51021-086,
RPS-51021-089, RPS-51021-091, RPS-51021-092,
RPS-51021-096, RPS-51021-097, RPS-51021-101,
RPS-53398-002, RPS-53398-037, RPS-53398-038
SD-51021-**00, SD-51021-002

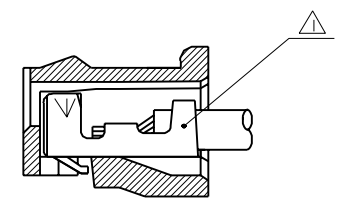
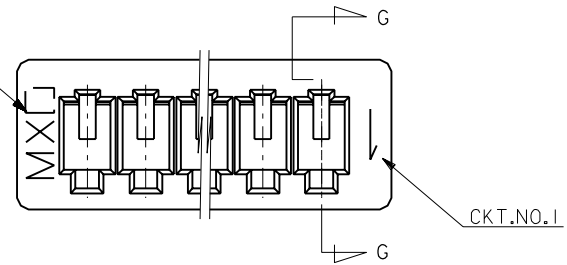
Sales Drawing

This document was generated on 06/07/2010

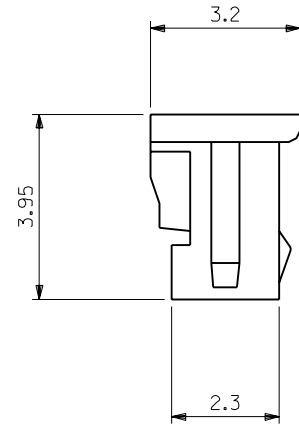
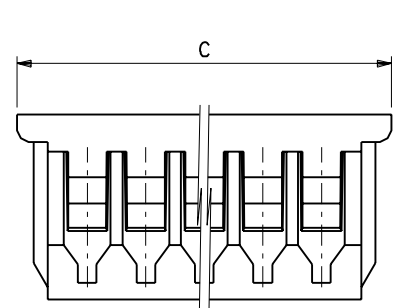
PLEASE CHECK WWW.MOLEX.COM FOR LATEST PART INFORMATION

DWG. NO.
SD-51021-**-00

トレードマーク
TRADE MARK



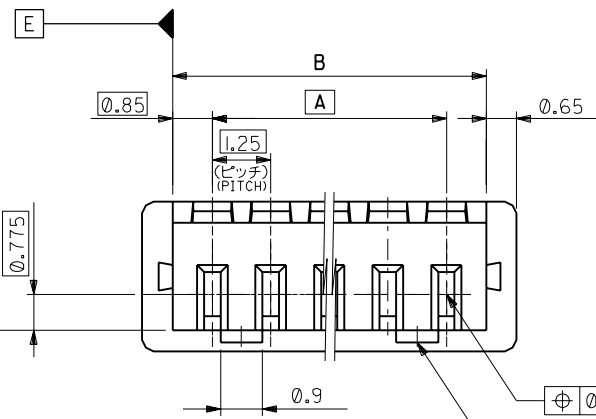
SECT. G-G



注記 NOTES

- △ 適合ターミナル : 50058, 50079 シリーズ
APPLICABLE TERMINAL : 50058, 50079 SERIES
- 2 嵌合相手 : 53047, 53048, 53261, 53398 シリーズ
MATE WITH : 53047, 53048, 53261, 53398 SERIES
- △ ロックは、2, 3極は1ヶ, 4極以上は2ヶとする。
LOCKING WINDOW : ONE PLACE FOR 2 & 3 CKT.
AND TWO PLACES FOR MORE THAN 3 CKT.

| | | | | |
|-------|-------|-------|------------|-------------|
| 20.5 | 19.2 | 17.5 | 51021-1500 | 15 |
| 19.25 | 17.95 | 16.25 | -1400 | 14 |
| 18 | 16.7 | 15 | -1300 | 13 |
| 16.75 | 15.45 | 13.75 | -1200 | 12 |
| 15.5 | 14.2 | 12.5 | -1100 | 11 |
| 14.25 | 12.95 | 11.25 | -1000 | 10 |
| 13 | 11.7 | 10 | -0900 | 9 |
| 11.75 | 10.45 | 8.75 | -0800 | 8 |
| 10.5 | 9.2 | 7.5 | -0700 | 7 |
| 9.25 | 7.95 | 6.25 | -0600 | 6 |
| 8 | 6.7 | 5 | -0500 | 5 |
| 6.75 | 5.45 | 3.75 | -0400 | 4 |
| 5.5 | 4.2 | 2.5 | -0300 | 3 |
| 4.25 | 2.95 | 1.25 | 51021-0200 | 2 |
| C | B | A | ENG.NO. | 種数 CKTS. |



⊕ 0.5 E F

| | | | | | |
|----------------------------|-------|-----------|---------------------------------------|--------------|------------|
| 角度 ANGLE | ±3° | | | | |
| 30以上 OVER | +0.3 | | | | |
| 10以上 30未満 UNDER | +0.25 | | | | |
| 10未満 UNDER | +0.2 | | | | |
| 一般公差 GENERAL TOLERANCES | | 記号 LTR | 変更内容 REVISION RECORD | DR. CHK. | 日付 DATE |
| | | D | 変更及び再作図 REVISED & REDRAWN (030522) | K.T. H.H. | '93/6/1 |

| | | | |
|---------------------------------|---------------|--------------------------------|--------------------|
| 材料 MATERIAL | 仕上げ FINISH | 適用電線範囲 WIRE RANGE | 被覆外径 INS. RANGE |
| PBTP UL94V-0 | — | — | — |
| DRAWN BY '93/6/1 K.TOJO | | CHK'D BY '93/6/1 H.HIRAMOTO | |
| APP'D BY '93/6/1 M.FUKUSHIMA | | 尺度 SCALE 10 : 1 | |

| | |
|--|-----|
| MOLEX-JAPAN CO.,LTD. 日本モレックス株式会社 | |
| REVISE ONLY ON CAD SYSTEM | |
| TITLE 名称 | |
| 1.25 WIRE TO BOARD CONN. RECEPTACLE HOUSING | |
| DWG. NO. | REV |
| SD-51021-**-00 | D |

10 9 8 7 6 5 4 3 2 1

F

F

E

E

D

D

C

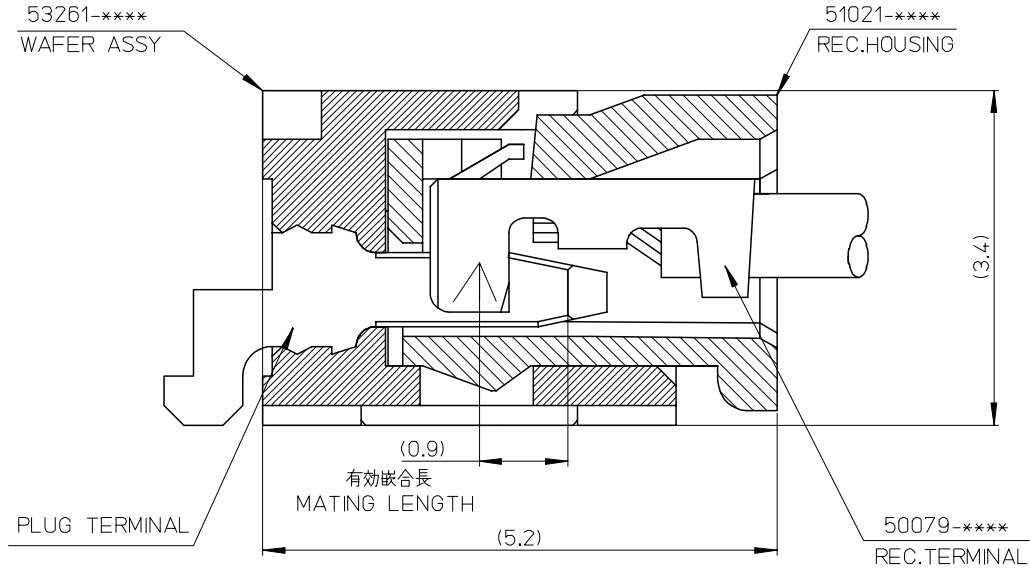
C

B

B

A

A



| | | |
|------------|------------|------------------------|
| 53261-**** | WAFER ASSY | MODEL NO./MATERIAL NO. |
| 50079-**** | TERMINAL | |
| 51021-**** | HOUSING | |

| | | | | | | | | |
|--|---------------------------------------|---------|--|--------------------|---|------------------------|------------------------|--|
| RELEASED EC NO: J2006-2426 DRWN: A0YAGI 2006/02/02 CHKD: YMAEDA 2006/02/03 APPR: NUKITA 2006/02/07 | GENERAL TOLERANCES (UNLESS SPECIFIED) | | DIMENSION STYLE MM ONLY | | SCALE --- | DESIGN UNITS METRIC | THIRD ANGLE PROJECTION | |
| | 10 UNDER | ± --- | DRAWN BY Y. A0YAGI | DATE 2006/01/30 | TITLE 1.25 W-TO-B CONN. 51021,53261 MATING CROSS SECTION | | | |
| | 10 OVER 30 UNDER | ± --- | CHECKED BY Y. MAEDA | DATE 2006/01/30 | MOLEX INCORPORATED | | | |
| | 30 OVER | ± --- | APPROVED BY N. UKITA | DATE 2006/01/30 | MATERIAL NO. SEE CHART | | | |
| | ANGULAR | ± --- ° | DRAFT WHERE APPLICABLE MUST REMAIN WITHIN DIMENSIONS | | DOCUMENT NO. SD-51021-002 | SHEET NO. 1 OF 1 | | |

9

8

7

6

5

4

3

2