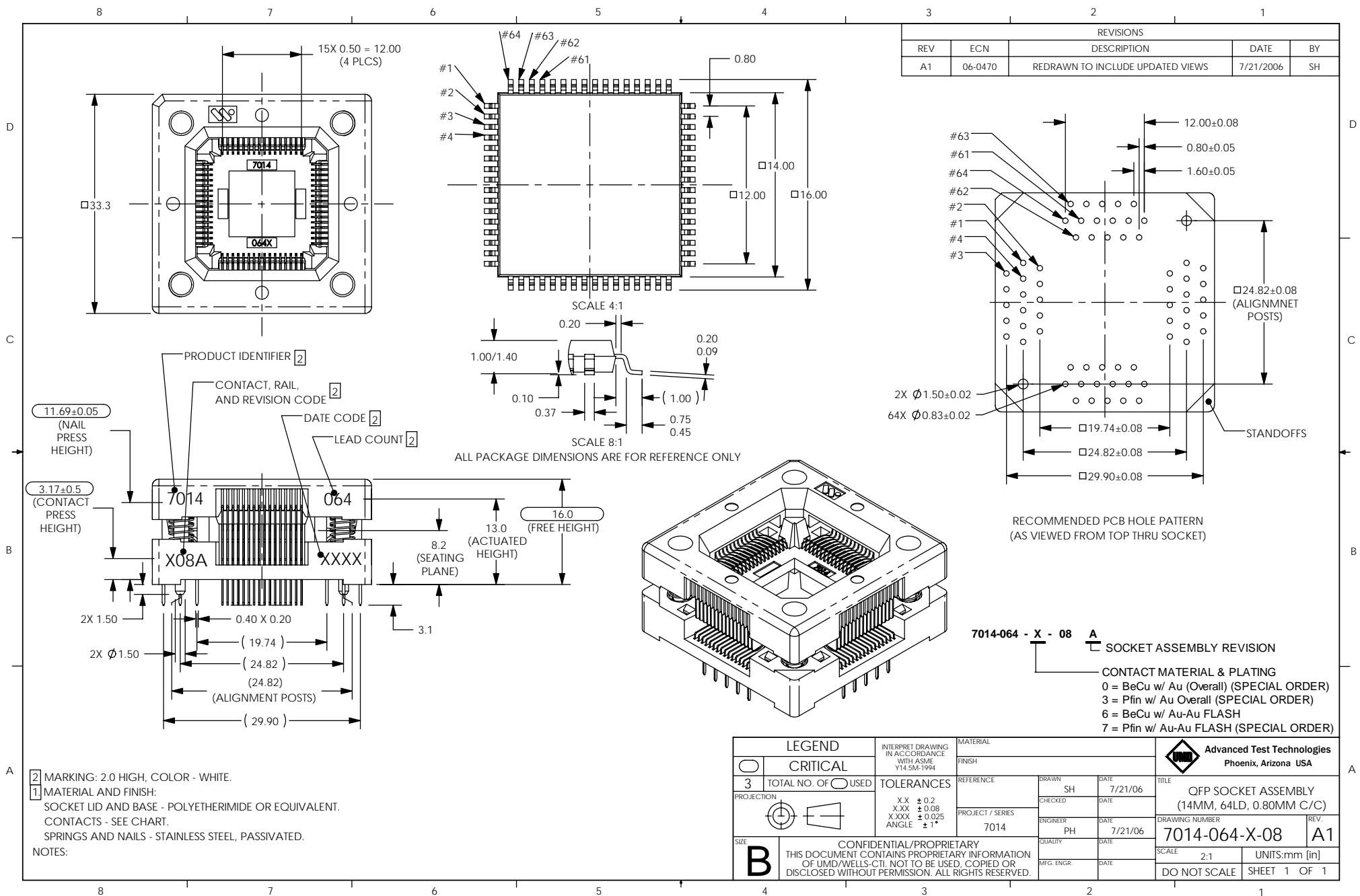


Please note that the 7014-064-X-08 drawing is only missing the "6", which is ROHS compliant gold plating. We do other versions which is why there is an X in the drawing.

Farnell 1337656=7014-064-6-08



REVISIONS				
REV	ECN	DESCRIPTION	DATE	BY
A1	06-0470	REDRAWN TO INCLUDE UPDATED VIEWS	7/21/2006	SH

ALL PACKAGE DIMENSIONS ARE FOR REFERENCE ONLY

7014-064 - X - 08 A
SOCKET ASSEMBLY REVISION
CONTACT MATERIAL & PLATING
 0 = BeCu w/ Au (Overall) (SPECIAL ORDER)
 3 = Pfin w/ Au Overall (SPECIAL ORDER)
 6 = BeCu w/ Au-Au FLASH
 7 = Pfin w/ Au-Au FLASH (SPECIAL ORDER)

2 MARKING: 2.0 HIGH, COLOR - WHITE.
1 MATERIAL AND FINISH:
 SOCKET LID AND BASE - POLYETHERIMIDE OR EQUIVALENT.
 CONTACTS - SEE CHART.
 SPRINGS AND NAILS - STAINLESS STEEL, PASSIVATED.

LEGEND		INTERPRET DRAWING IN ACCORDANCE WITH ASME Y14.5M-1994		MATERIAL FINISH		Advanced Test Technologies Phoenix, Arizona USA	
	CRITICAL	3	TOTAL NO. OF USED	REFERENCE	DRAWN SH	DATE 7/21/06	TITLE
	PROJECTION	TOLERANCES		PROJECT / SERIES	CHECKED	DATE	QFP SOCKET ASSEMBLY (14MM, 64LD, 0.80MM C/C)
SIZE B		X.X ± 0.2 X.XX ± 0.08 X.XXX ± 0.025 ANGLE ± 1°		7014	ENGINEER PH	DATE 7/21/06	DRAWING NUMBER
CONFIDENTIAL/PROPRIETARY THIS DOCUMENT CONTAINS PROPRIETARY INFORMATION OF UMD/WELLS-CTI. NOT TO BE USED, COPIED OR DISCLOSED WITHOUT PERMISSION. ALL RIGHTS RESERVED.		QUALITY	DATE	7/21/06	DATE	7/21/06	7014-064-X-08
		MFG. ENGR.	DATE		SCALE	2:1	UNITS:mm [in]
					DO NOT SCALE		SHEET 1 OF 1
							REV. A1