

ERSA systems for safe and controlled IR Reflow

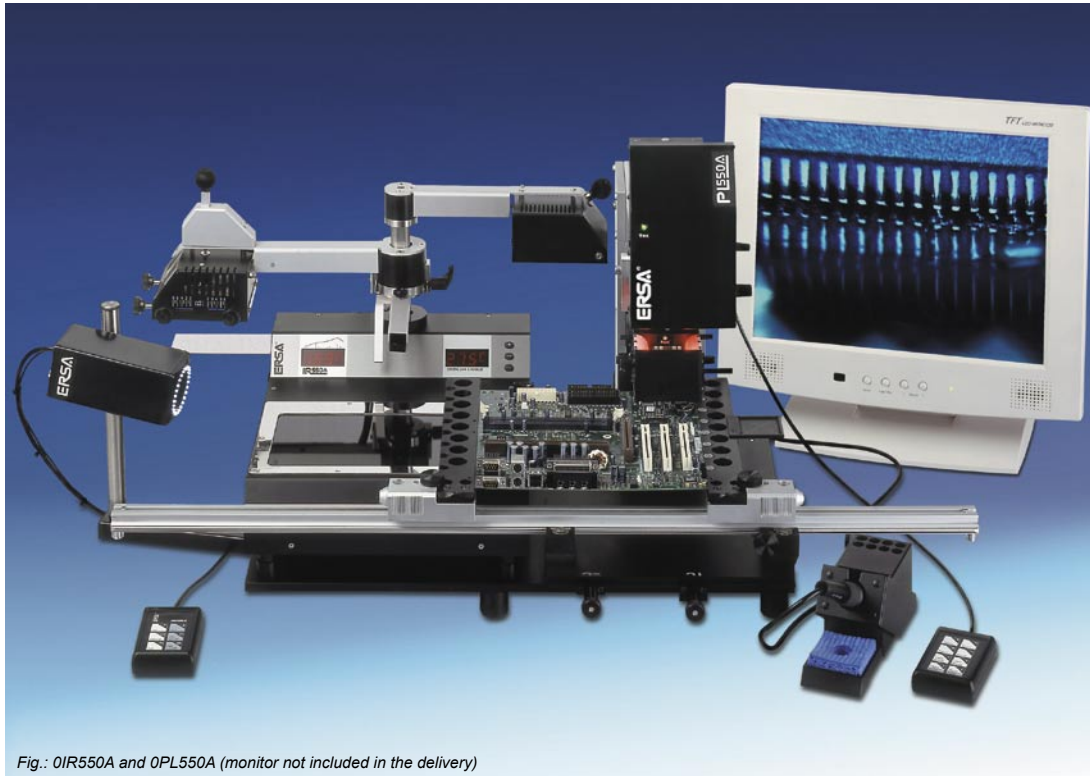


Fig.: 0IR550A and 0PL550A (monitor not included in the delivery)

Precision and control – to know, to see, to succeed!

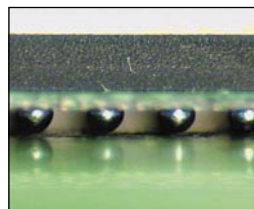
With thousands of systems already sold, the ERSA **IR 500 A** has become well established in industry. In the meantime, the ERSA Rework Family has grown!

The microprocessor controlled rework system **IR 550 A** is a further development of the **IR 500 A**. More powerful heating elements, microprocessor controlled temperature profiles and a non-contacting heat sensor are the outstanding features of this unit. The professional user is also offered reproducible soldering qualities and process documentation for single components with the PC compatible software **IRSoft**.

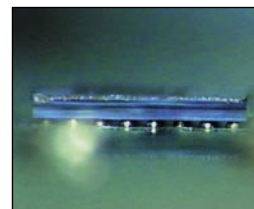
With the reflow process camera ERSA **RPC 550 A**, it is now possible to directly watch the formation of BGA soldering joints during reflow. The **RPC 550 A** consists of a 72 x motor zoom camera with integrated LED-ringlight. In combination with the IR-systems, ERSA offers the chance for safe and controlled BGA / SMT rework.

The **PL 550 A** is a high-precision placement system for a wide range of SMT-components with dimensions ranging from 1 x 1 mm (0.04 - 0.04") to 40 x 40 mm (1.6 x 1.6").

A high resolution PAL CCD-color camera allows precise and easiest component alignment, and the motorized



PBGA during reflow



CSP during reflow

72 x zoom together with two zoom presettings make the system handling even more comfortable. The motorized z-axis and the automatically switching "pick-n-place" mechanism ensure best functionality.

Additionally, the **PL 550 A** unit is equipped with a reflow process camera module. This module allows the visual process control during the soldering process - also with soldering joints hidden under the component.

The most important pre-requisites for successful SMT rework are the knowledge about soldering processes and the ability to see how the soldering joint forms.

Thus, the combinations of **IR 550 A** and **RPC 550 A** or **IR 550 A** and **PL 550 A** are the ultimate form of process control for BGA / SMT rework.

ERSA product range

Soldering tools

NEW DIMENSION

- Soldering / desoldering stations
- SMD-Equipment
- Accessories

PROFI-LINE

- Hand soldering tools
- Battery-powered / gas soldering irons
- Solder baths
- Special tools

BGA/SMT-Rework

- IR Rework Center
- Placing systems
- Reflow process camera

CLEAN-AIR

Soldering systems

- Wave soldering machines
- Reflow soldering machines
- Selective soldering machines
- Process optimization software

Inspection systems

- ERSASCOPE
- ImageDoc Software

Other services

- Know-how seminars
- In-House trainings
- Test soldering
- Installation and maintenance assistance
- Process support

ERSA systems for safe and controlled IR Reflow

IR 550 A

Microprocessor controlled rework system

- Powerful dark IR radiators for even component warm-up (top: 60x60 mm; bottom: 135x260 mm)
- Patented aperture system at the top heater
- Temperature measurement directly at the component with non-contacting IR sensor or optional thermocouple (temperature calibration to solder melting point with Cal-function)
- Freely programmable temperature profiles
- Integrated soldering station to connect ERSA soldering and desoldering irons
- Direct cooling of the component at the soldering position
- Integrated vacuum pipette for easy desoldering
- Ergonomic operation
- Parameter setting via external keyboard
- PC software IRSOFT for documentation of soldering processes and parameters



0IR550A

RPC 550 A

Reflow process camera

(for operation with IR rework systems)

- Visual process control (monitoring of hidden soldering joints is also possible)
- Freely adjustable 72 x monitor zoom camera
- Integrated, dimmable LED ring light for optimum soldering joint illumination
- Two pre-set, selectable zooms
- Easy setting of zoom, focus and ring light via external keyboard
- Direct cooling of the component after soldering
- Solid base board for the installation of IR rework systems, with height adjustment
- High-precision PCB table
- Interface for monitor or PC with documentation software

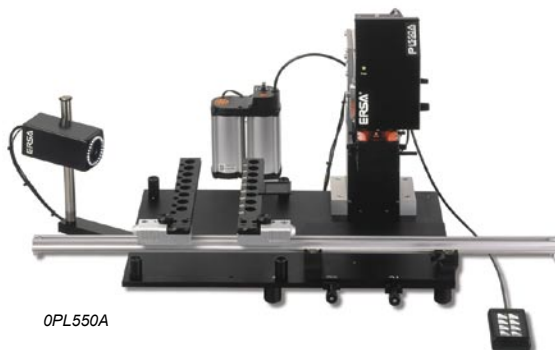


0VSRPC550A

PL 550 A

High-precision placement system with RPC (for operation with IR rework systems)

- Placement system for high channel SMT components up to 40 x 40 mm
- Placement accuracy +/- 10 µm
- High-precision X-Y PCB table
- High-contrast, dimmable LED illumination of component pins and pads
- Automatically switching vacuum for safe component placement
- Integrated automatically switching reflow process camera with dimmable LED ring light (see RPC 550 A)
- Comfortable adjustment of zoom, focus, placement head and ring light via external keyboard



0PL550A

Monitor recommendation:

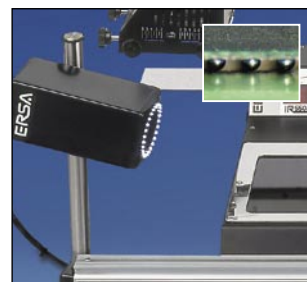
The ERSA PL and RPC systems are equipped with high-resolution PAL CCD cameras. The systems can only be used together with a PAL compatible or Multisync color monitor. Best visualization will be reached with high-resolution tube monitors (horizontal resolution ≥ 470 TV lines). A b/w monitor is unsuitable for this application. It is possible to connect a PC frame grabber card.

Order nos.: (for 230 V executions) (order nos. for 115 V executions on demand)

0IR550A	Mikroprocessor controlled rework system
0VSRPC550A	Reflow process camera
0PL550A	High-precision placement system with reflow process camera
0PL550AU	High-precision placement system, retrofittable with reflow process camera
0IR4500-06	Cooling fan for PCBs (external unit)
0IR5500-01	X-Y PCB table (for IR rework systems which are not operated with a reflow process camera or placement system)



PL 550 A (detail)



RPC 550 A (detail)

Asia:

ERSA Asia Pacific
Suite 35, 35/F.,
China Resources Building
26 Harbour Road, Wan Chai
Hong Kong
Phone: ++852 2331 2232
Fax: ++852 2758 7749
e-mail: kurtz@kfe.com.hk
www.ersa.com

Room 601, 6th Floor.,
Beethoven Plaza
No. 1158, Chang Ning Road
Shanghai, 200131, China
Phone: ++86 (21) 52 41 60 00
Fax: ++86 (21) 52 41 99 18
e-mail: kurtz@kurtz.com.cn
www.ersa.com

USA:

ERSA Inc.
Pilgrim Road 1779
Plymouth, WI 53073
USA
Phone: 800-363-3772
Fax: (+1) 920-893-3322
e-mail: info@ersa.com
www.ersa.com

Europe:

ERSA GmbH
Leonhard-Karl-Str. 24
97877 Wertheim / Germany
Phone: ++49 (0) 9342 / 800-0
Fax: ++49 (0) 9342 / 800-250
e-mail: info@ersa.de
www.ersa.de