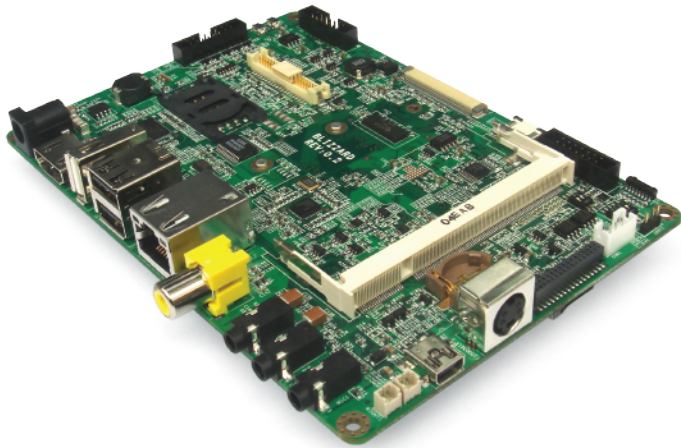


# Blizzard

## Interface Base Board for TDM-3730 Series



### Key Features

Complete TDM-3730 multimedia development board compatible with any display through LVDS, TTL, HDMI, VGA, S-Video interfaces.

Expand storage options with USB, SATA and micro-SD card slot. Record and play back audio and video easily over the Composite, S-video interfaces, audio jacks and speakers and Camera expansion interface.

LAN, RS-232, RS-422/485, SPI, I2C to control remote or external devices or connect over a 3G module to the outside world. (miniPCIe + SIMcard available on Blizzard).

### Specifications

#### System

System on module

Compatible with TDM-3730 by a 200 pin SO-DIMM connector  
10/100 Mbps by local bus  
onboard RTC with backup battery

Network  
RTC

#### Interfaces

Connectors

3 standard-USB hosts  
1 mini-USB device/ OTG  
RJ-45 LAN connector  
micro-SD card slot  
Stereo audio in/out 3.5 mm  
Microphone 3.5 mm  
2W amplified speaker  
18 bit LVDS and touchpanel  
TTL LCD & touchpanel for 4.3" LCD  
TTL LCD & touchpanel for 7" LCD  
RCA composite in, S-video out  
HDMI connector  
IR sensor, MiniPCIe slot + SIM card  
for 3G datamodule

Expansion header

VGA by pinheader, Camera  
expansion, keypad, SPI, RS-232,  
RS-422/485, UART, I<sup>2</sup>C, GPIO

#### Power

Power requirements 12 VDC

#### Environmental and Mechanical

Temperature

Commercial: 0° to 70° C  
Extended: -20° to 70° C  
Industrial: -40° to 85° C

Humidity

10-90%

Dimensions

147 x 102 mm (5¾ x 4 inch)

MTBF

>100,000 hours

Weight

92 grams

Shock

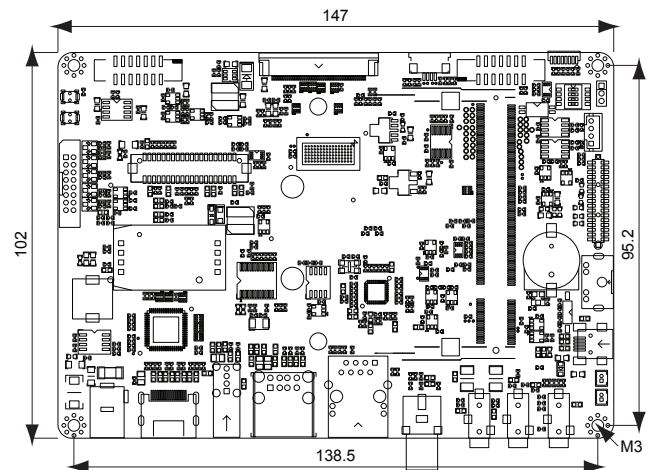
50G / 25ms

Vibration

20G / 0-600 Hz

### Dimensions

units in mm



### Order Information

Blizzard

Base board for TDM-37x series

Blizzard pack

TDM-3730W & Blizzard & 4.3" LCD  
& 60 Watt 12VDC Adaptor

Blizzard pack XL

TDM-3730W & Blizzard & 7" LCD  
& 60 Watt 12VDC Adaptor

Contact us for custom interface boards for your projects

## TechNexion

Phone: +886-2-8227-3585

E-mail: sales@technexion.com

Web: <http://www.technexion.com>

