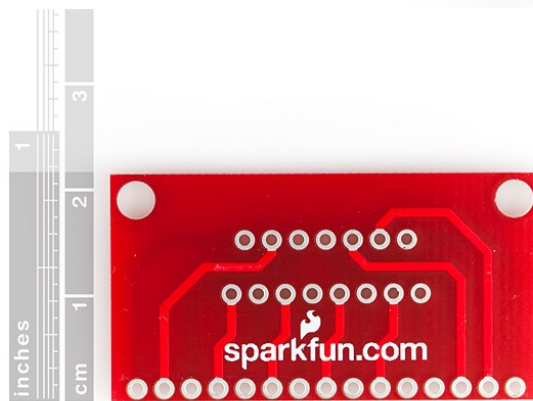
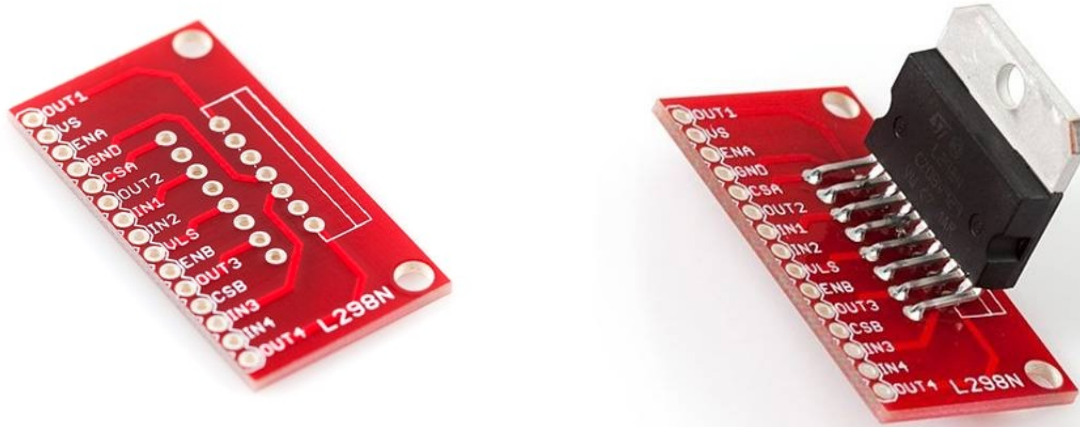


SparkFun

Breakout Board for L298N Full-Bridge Motor Driver

sku: BOB-09540



Description: This is a breakout board for the [L298N](#) full-bridge dual motor driver; which comes in a staggered, Multiwatt package.

All pins of the L298N are broken out to a 15-pin 0.1" pitch header. Two mounting holes are also provided.

Keep your eyes peeled for a compatible heatsink, coming soon!

Dimensions:

- Board: 1.6x0.85 inches

Documents:

- [Schematic](#)
- [Eagle Files](#)
- [L298N Datasheet](#)