

LXP3-SERIES FOR CREE XP-E LEDs



- Specially designed for Cree XLAMP XP-E series of LEDs.
- Special care taken to make a uniform white or warm white illumination.
- Lens material optical grade PMMA with high UV and temperature resistance (105°C/220°F). Allows use of high current and temperature conditions.
- Best available optical efficiency, more than 90%, with an extremely good cutoff of light.
- Fastening to heat sink with a PU foam **adhesive tape** of automotive grade.
- We advise customer to ensure the suitability and sufficiency of the bond in the end product. For example, mechanical stress, vibration and holes on the surface of the circuit board weaken the strength of the tape.
- Please check fastening details from this link:
http://www.ledil.com/datasheets/DataSheet_TAPE.pdf

LENS TYPES

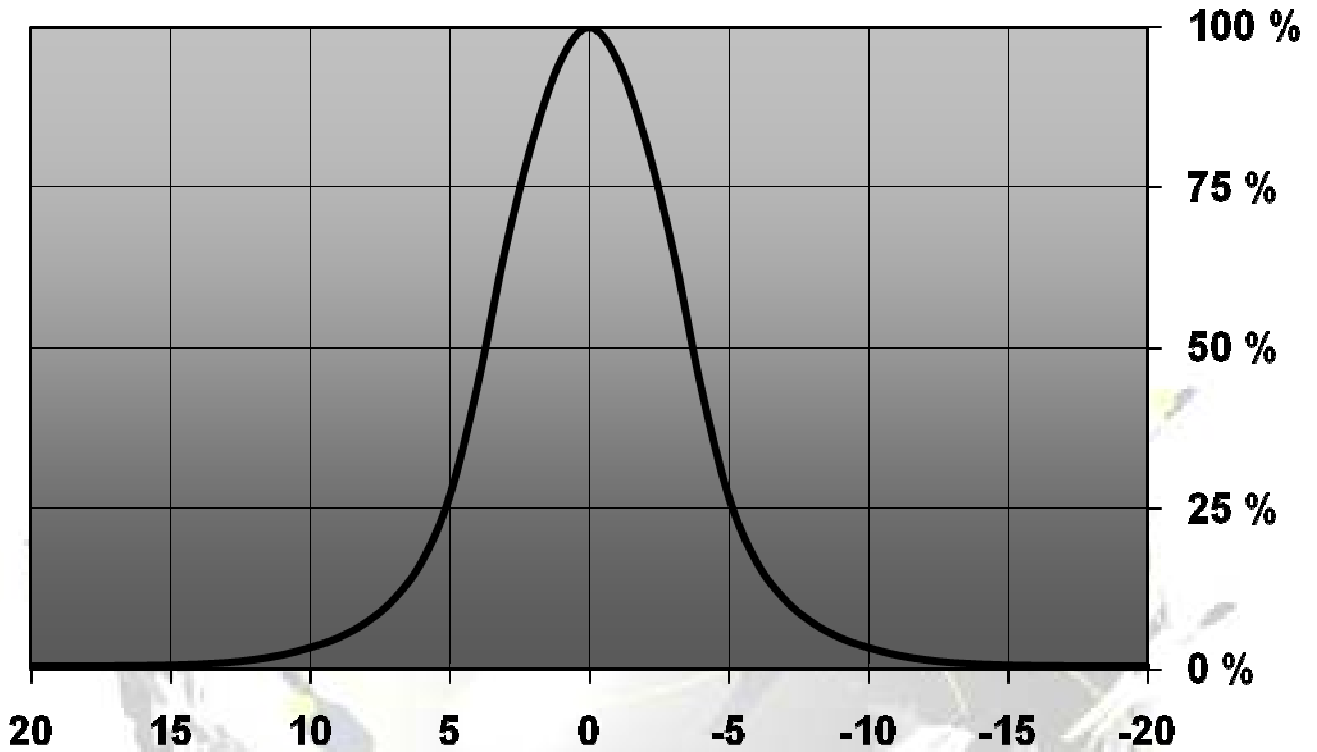
NAME	ORDERING CODE	FWHM Angle
LXP3 REAL SPOT	CA11631_LXP3-RS	±4°
LXP3 DIFFUSER	CA11632_LXP3-D	±6°
LXP3 MEDIUM	CA11633_LXP3-M	±12°
LXP3 OVAL	CA11634_LXP3-O-90	±20° X ±8°

EULUMDAT & IES FILES AVAILABLE BY REQUEST

© Ledil Oy – PRELIMINARY - Subject to change without prior notice

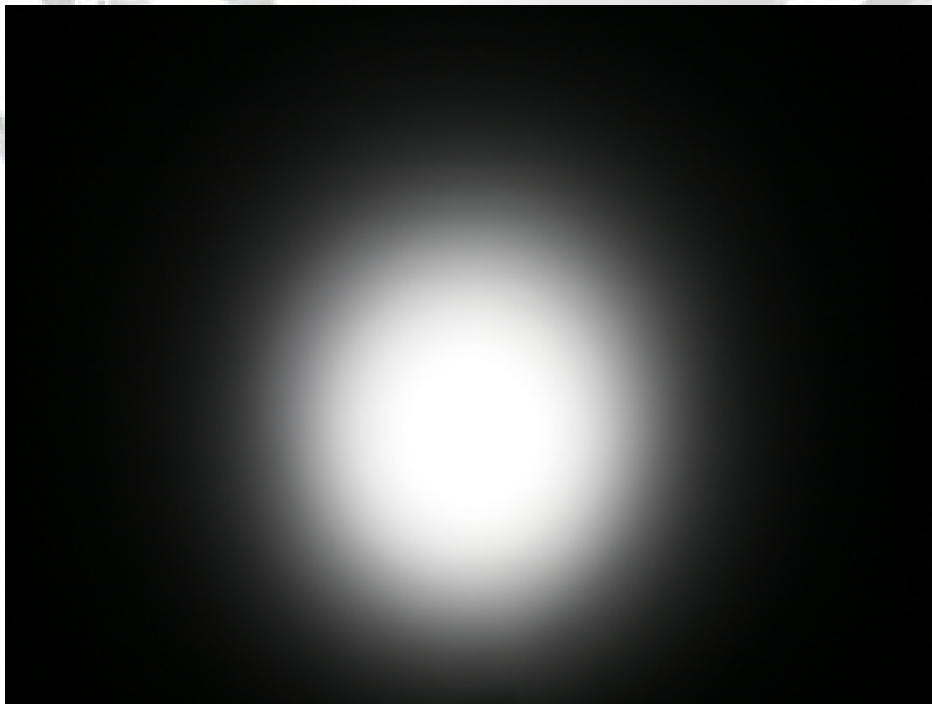
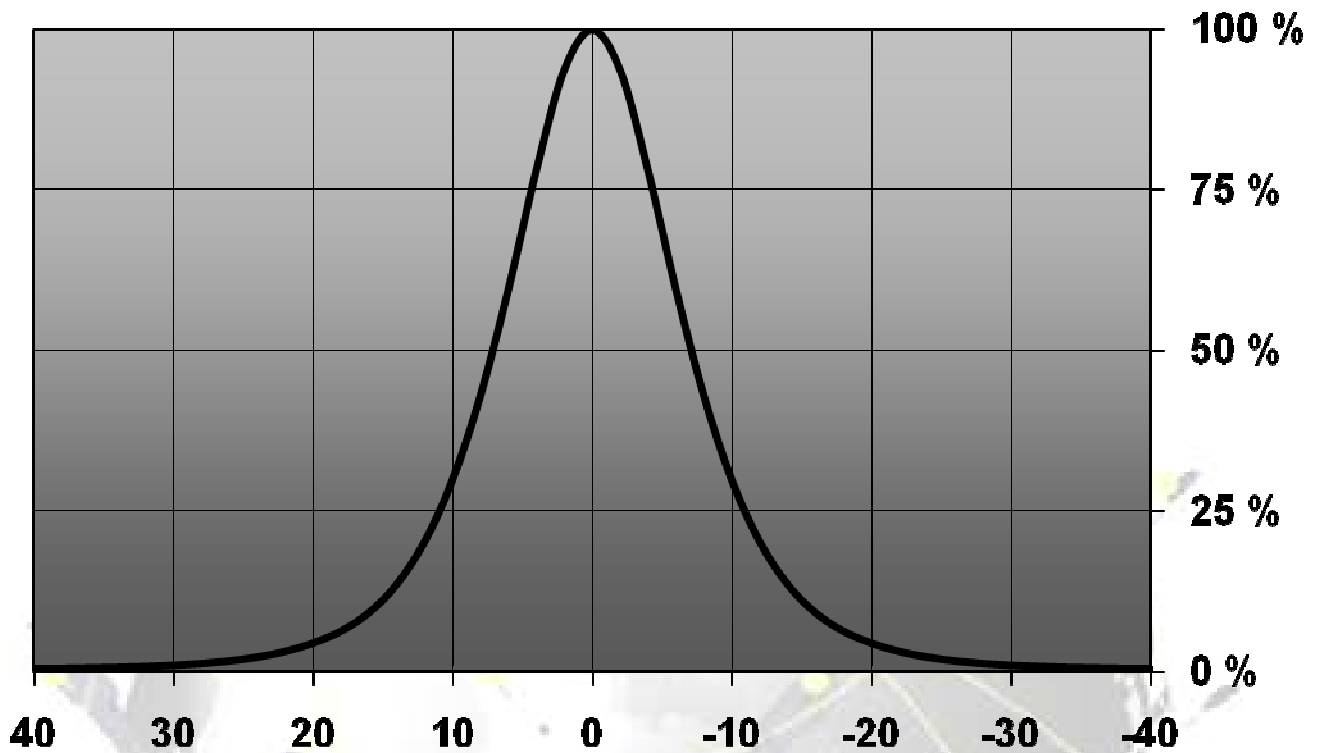
MEASUREMENT DATA

Relative Intensity of CA11631_LXP3-RS



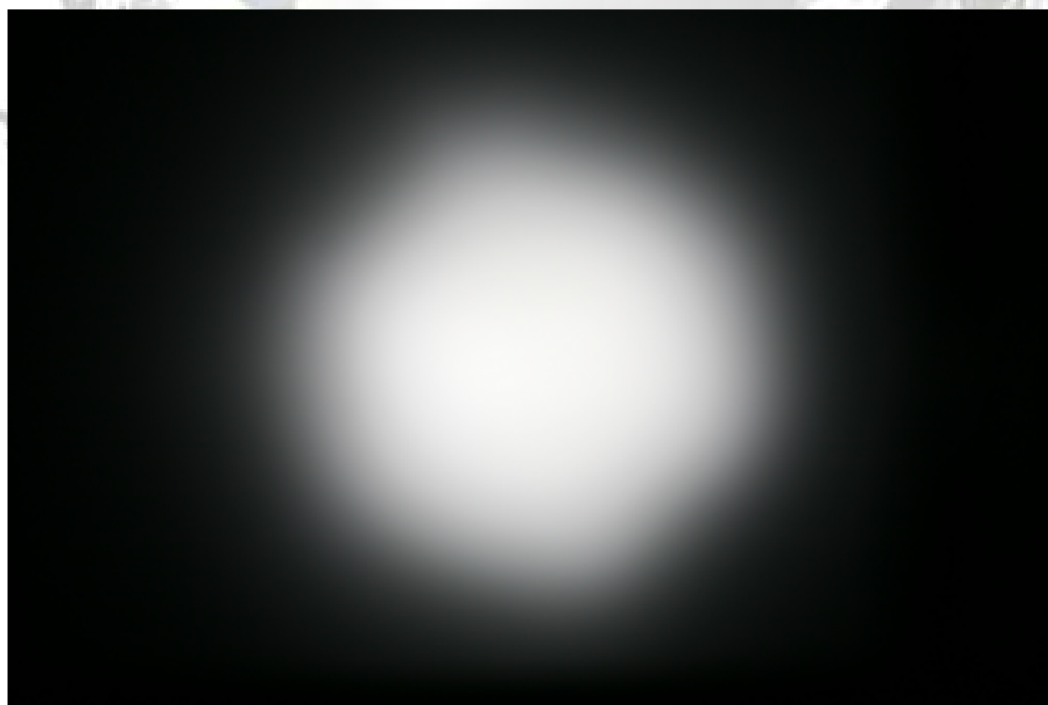
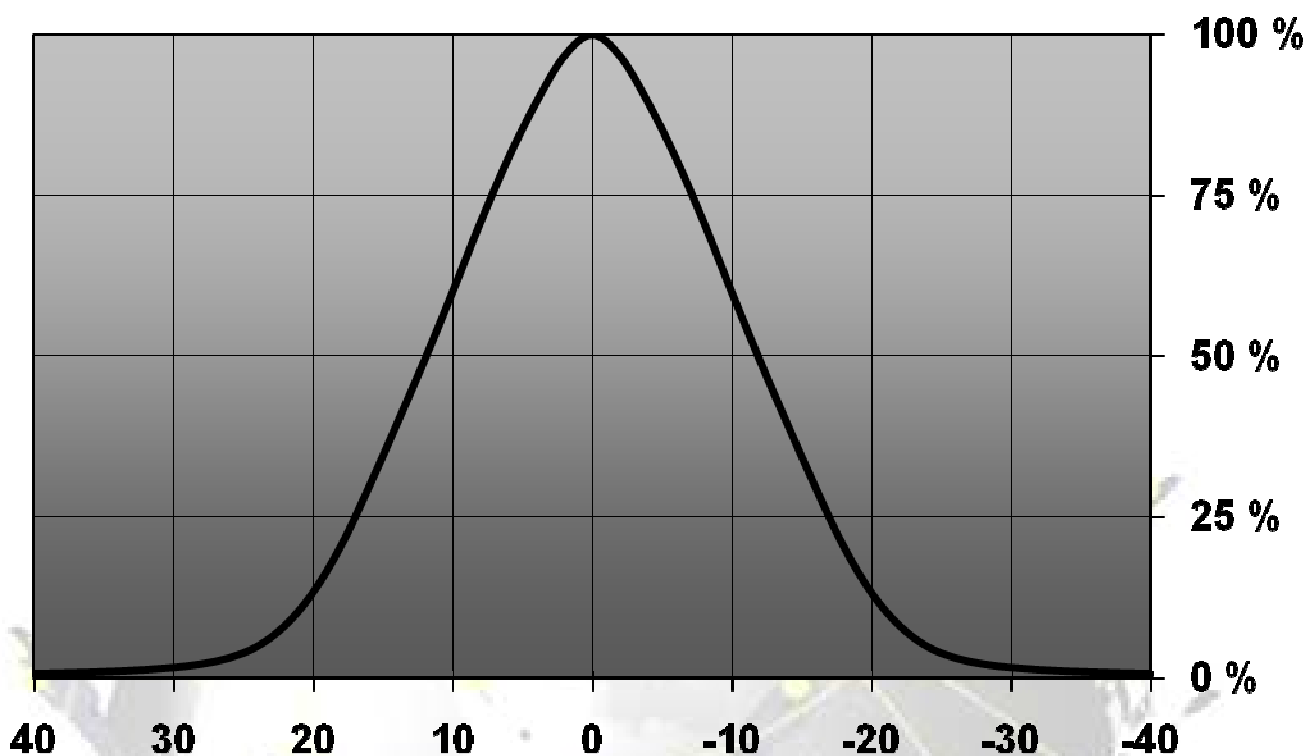
© Ledil Oy – PRELIMINARY - Subject to change without prior notice

Relative intensity of CA11632_LXP3-D



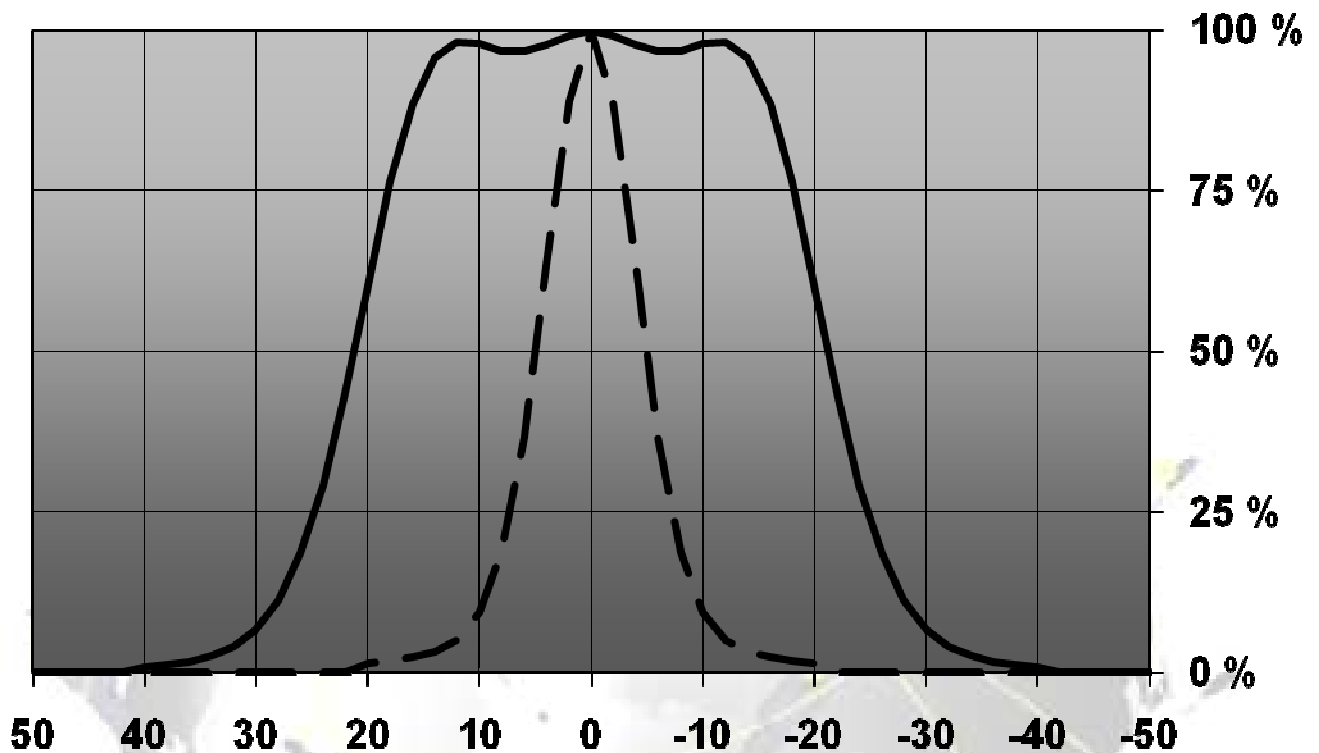
© Ledil Oy – PRELIMINARY - Subject to change without prior notice

Relative intensity of CA11633_LXP3-M



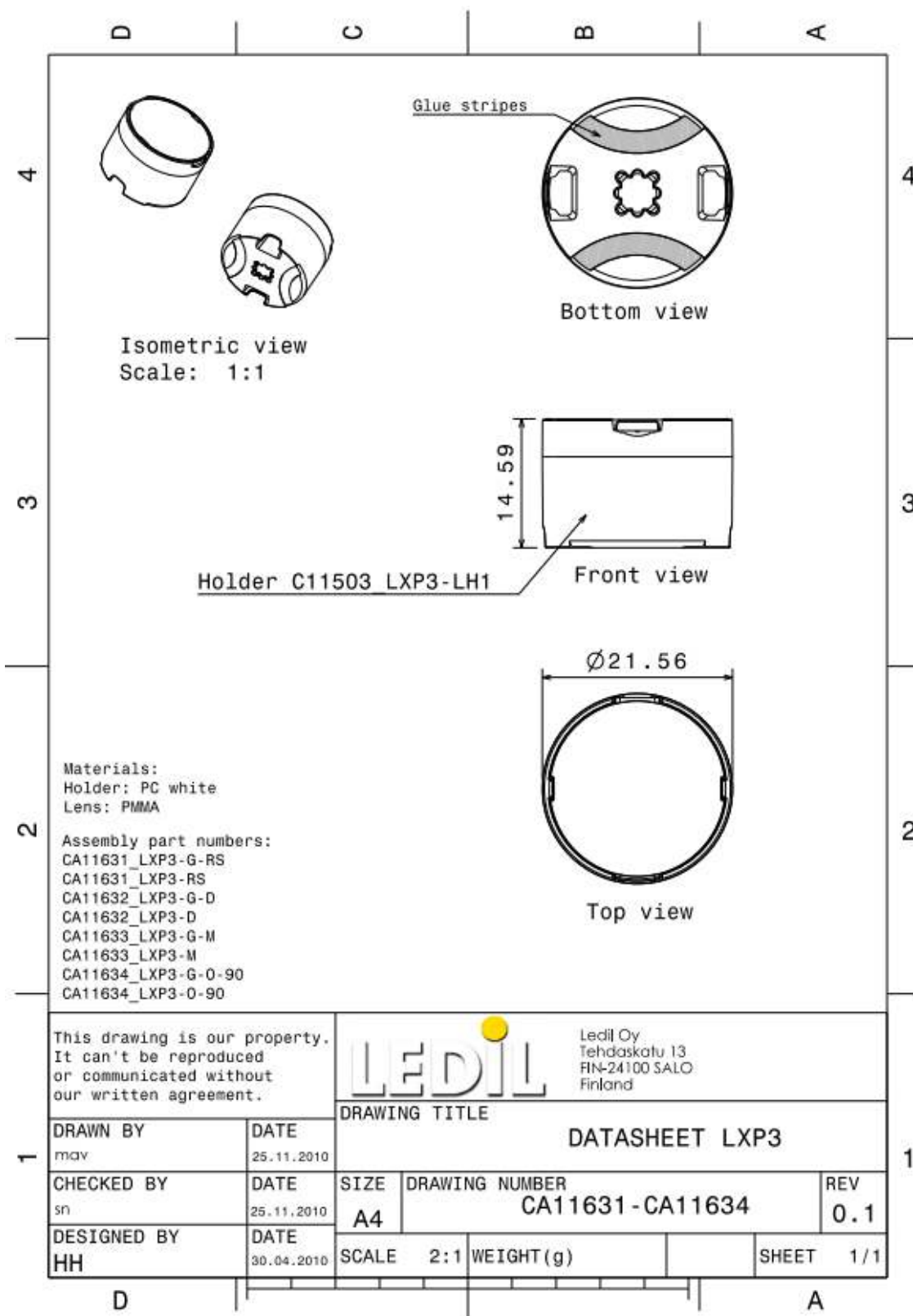
© Ledil Oy – PRELIMINARY - Subject to change without prior notice

Relative Intensity of CA11634_LXP3-O-90



© Ledil Oy – PRELIMINARY - Subject to change without prior notice

DRAWINGS



© Ledil Oy - PRELIMINARY - Subject to change without prior notice