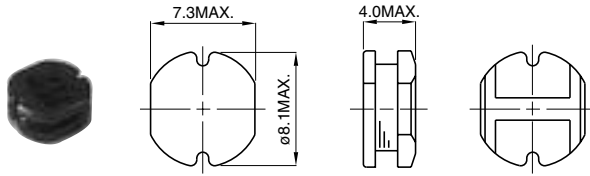
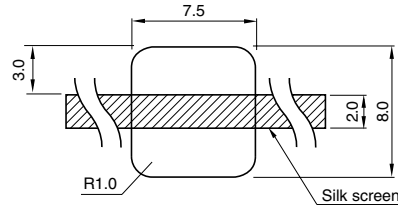


**UNSHIELDED**
**CD73**
**Outline**

Various kinds of high power SMT inductors which are superior to high saturation. They are also magnetically shielded type to prevent noise radiation.

**Dimensions (mm)**

 (10 $\mu$ H – 330 $\mu$ H)

**LAND PATTERNS(mm)**


In order to prevent short-circuiting, a silk screen is recommended.

**CONSTRUCTION**

**◆ TYPE CD73**

Parts No.	Inductance	D.C.R. ( $\Omega$ ) (Max) Typical / Rated D. C. Current (A)	Parts No.	Inductance	D.C.R. ( $\Omega$ ) (Max) Typical / Rated D. C. Current (A)
100	10 $\mu$ H	0.0803 / 1.44	820	82 $\mu$ H	0.406 / 0.54
120	12 $\mu$ H	0.0897 / 1.39	101	100 $\mu$ H	0.481 / 0.51
150	15 $\mu$ H	0.104 / 1.24	121	120 $\mu$ H	0.536 / 0.49
180	18 $\mu$ H	0.111 / 1.12	151	150 $\mu$ H	0.755 / 0.40
220	22 $\mu$ H	0.129 / 1.07	181	180 $\mu$ H	1.022 / 0.36
270	27 $\mu$ H	0.153 / 0.94	221	220 $\mu$ H	1.200 / 0.31
330	33 $\mu$ H	0.170 / 0.85	271	270 $\mu$ H	1.306 / 0.29
390	39 $\mu$ H	0.217 / 0.74	331	330 $\mu$ H	1.495 / 0.28
470	47 $\mu$ H	0.252 / 0.68	391	390 $\mu$ H	
560	56 $\mu$ H	0.282 / 0.64	471	470 $\mu$ H	
680	68 $\mu$ H	0.332 / 0.59			

**Measuring Freq. (L)**

 10 $\mu$ H – 82 $\mu$ H (2.52MHz), 100 $\mu$ H – 820 $\mu$ H (1kHz)

**Tolerance of Inductance**

 CD73      10 $\mu$ H – 47 $\mu$ H  $\pm$  20% (M), 56 $\mu$ H – 330 $\mu$ H  $\pm$  10% (K)

**Rated D.C. Current**

This indicates the value of current when the inductance is 10% lower than its initial value at D.C. superimposition or D.C. current when at t=40°C, whichever is lower. (Ta=20°C)

**Sales Contact**
**North America**  
 1701 Golf Road, Tower 3  
 Suite 400, Rolling  
 Meadows, IL 60008, USA  
 Tel: (1) 847 545-6700  
 Fax: (1) 847 545-6720

**Japan**  
 Nihonbashi- ingyocho  
 2-Chome, Chuo-ku,  
 Tokyo, Japan  
 Tel: (81) 03 3667-3301  
 Fax: (81) 03 3667-3456

**Hong Kong**  
 14/F, Eastern Centre,  
 1065 King's Road, Quarry  
 Road, Hong Kong  
 Tel: (852) 2880-6688  
 Fax: (852) 2880-9596

**Taiwan**  
 No. 171, Futech Street,  
 Hsin-I, Taipei, Taiwan,  
 ROC  
 Tel: (886) 2 2726-2177  
 Fax: (886) 2 2728-2726

**Singapore**  
 996 Bendemeer  
 Road #04-05 to 06  
 Singapore 339944  
 Tel: (65) 2963-388  
 Fax: (65) 2963-390

**Europe**  
 Chaussee de Tervuren113A,  
 1160 Brussels  
 Belgium  
 Email:  
 europe.sales@hk.sumida.com