

# DFRobot

## DFRobot Tilt Sensor

### (SKU:DFR0028)

#### Introduction



 DFRobot Tilt Sensor

The *DFRobot Tilt Sensor* is a digital mercury-based tilt switch that is either closed, disconnected or open. The module is based on the number of mercury switches. The mercury flows to the low-lying and could therefore be used as a simple tilt sensor. The dedicated sensor expansion boards with the Arduino, in combination, can achieve very interesting and an interactive work.

*Note: Mercury is a toxic substance, please be careful to avoid breaking the glass case.*

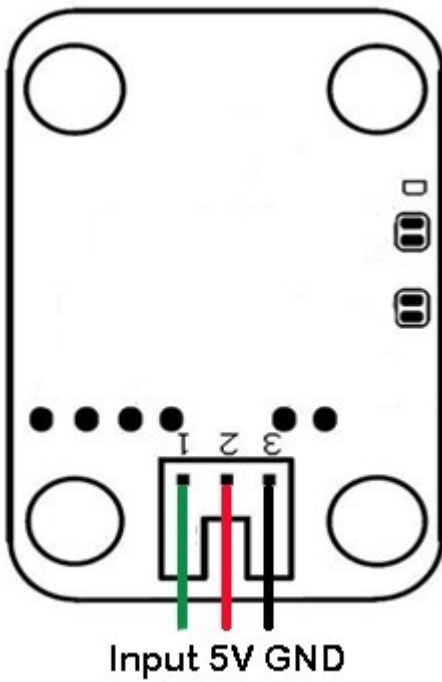
#### Specification

- Digital mercury-based tilt switch
- Can be used as a simple tilt sensor

#### Pin Definition

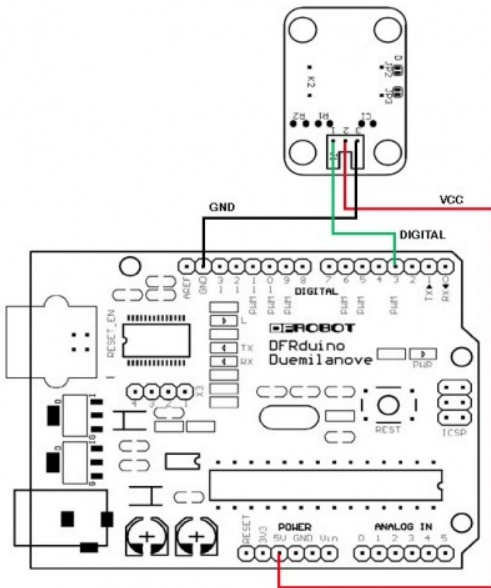
Touch Sensor module pin definition :

1. Input
2. Power
3. GND



digital input module

## Connection Diagram



Digital module connection diagram

## Sample Code

```
int ledPin = 13; // Connect LED to pin 13
int switcher = 3; // Connect Tilt sensor to Pin3

void setup()
{
  pinMode(ledPin, OUTPUT); // Set digital pin 13 to output mode
  pinMode(switcher, INPUT); // Set digital pin 3 to input mode
}
void loop()
{
  if(digitalRead(switcher)==HIGH) //Read sensor value
```

```
{
  digitalWrite(ledPin, HIGH); // Turn on LED when the sensor is tilted
}
else
{
  digitalWrite(ledPin, LOW); // Turn off LED when the sensor is not triggered
}
}
```