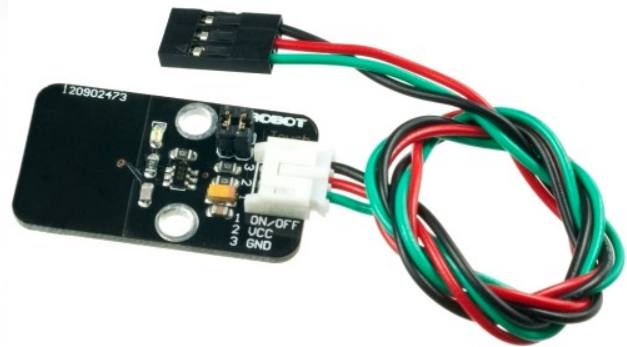


DFRobot

Capacitive Touch Sensor (SKU: DFR0030)



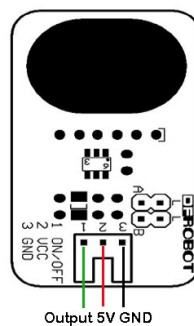
Introduction

This is a Plug & Play human body and metal sensor. It senses your touch. It is designed to be compatible with Arduino boards and our IO expansion board.

Specification

- Type: Digital
- Touch switch pin definitions are (1) output (2) power supply (3) ground

Pin Definition



Documents

- [Manual](#)

Shipping List

- Sensor (1 unit)
- Digital Sensor Cable (1 unit) (SKU:FIT0011)