

DFRobot

Analog Voltage Divider (SKU: DFR0051)



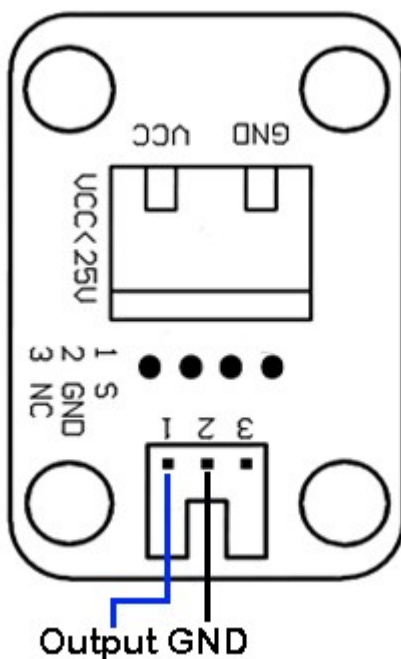
Analog Voltage Divider (SKU: DFR0051)

The *Voltage Divider* can detect the supply voltage upto 25V. The DFRobot Voltage Divider module is based on resistor divider principle. The voltage detection module allows the input voltage to reduce 5 times. As the Arduino analog input voltage is up to 5V, so voltage detection module's input voltage can not be greater than the $5V \times 5 = 25V$.

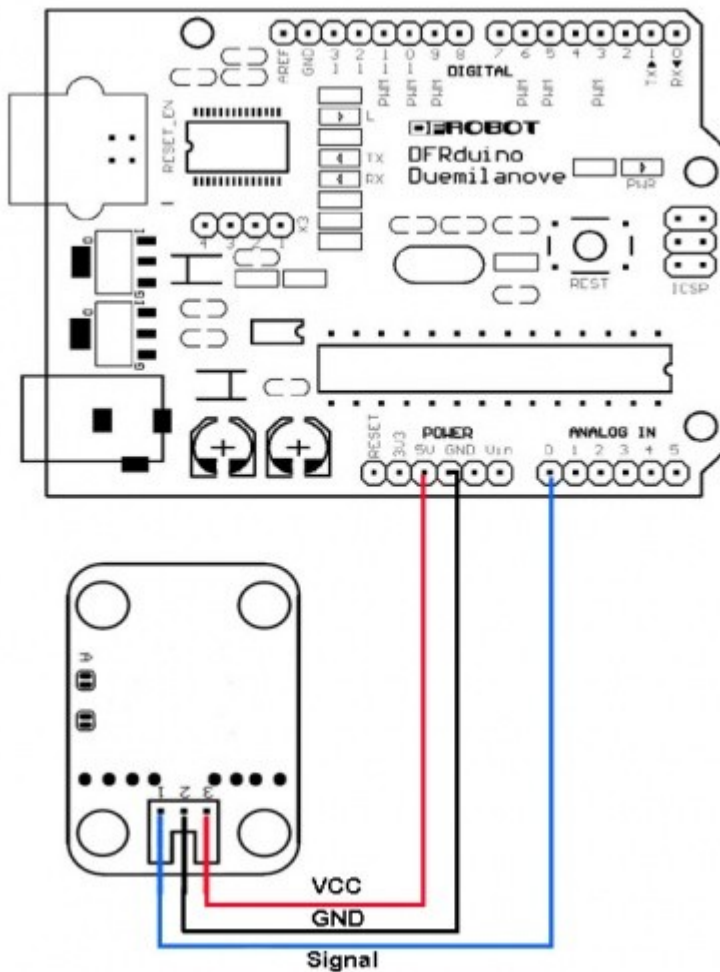
Specification

- Type: Analog
- Input voltage (DC): Maximum 25V, Minimum 0.0245V
- Detects the supply voltage upto 25V
- 3 Pins JST interface module

Pin Definition



Connection Diagram



📄 Analog sensor connection diagram

Sample Code

```
void setup()
{
  Serial.begin(9600);
}
void loop()
{
  int val;
  float temp;
  val=analogRead(0); //This divider module will divide the measured voltage by 5,
the maximum voltage it can measure is 25V.
  temp=val/4.092; //
  val=(int)temp; //
  Serial.println(val);
  delay(100);
}
```