

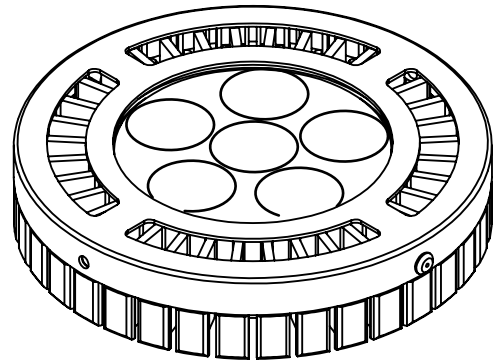
Solid-State Lighting Series

10W/15W M26 Series Module

Datasheet

Consisting of 6 high performance Edixeon® power LEDs driven at 500mA, M26 module is capable of delivering illumination up to 3,700 lux (10 w) at 1 meter distance with a beam angle of 25 degree. The proprietary 6-in-1 optics is designed thoroughly to provide precise beam control and maximum light output, thanks to the benefit of optical grade plastic material.

For thermal management, an immense heatsink with a large amount of fine fins structure is used to ensure distinguished heat dissipation. Besides, M26 module is designed as slim thickness as 26mm, and to model under restricted spaces where traditional lighting fixture is too small to fit in.



Features :

- Fully Integral Design
- Low Power Consumption
- Long Life (50,000hrs)
- Various Color Temperature (Cool/Neutral/Warm White)
- Available in Narrow (25°) and Wide (40°) Beams

Table of Contents

- Dimensions..... 2
- Absolute Maximum Ratings / Specifications..... 2
- Illuminance and Beam Angles..... 3
- Light Patterns..... 4
- Assembly Instructions and Recommended Driver Specification..... 5
- Application Notes..... 5

Dimensions

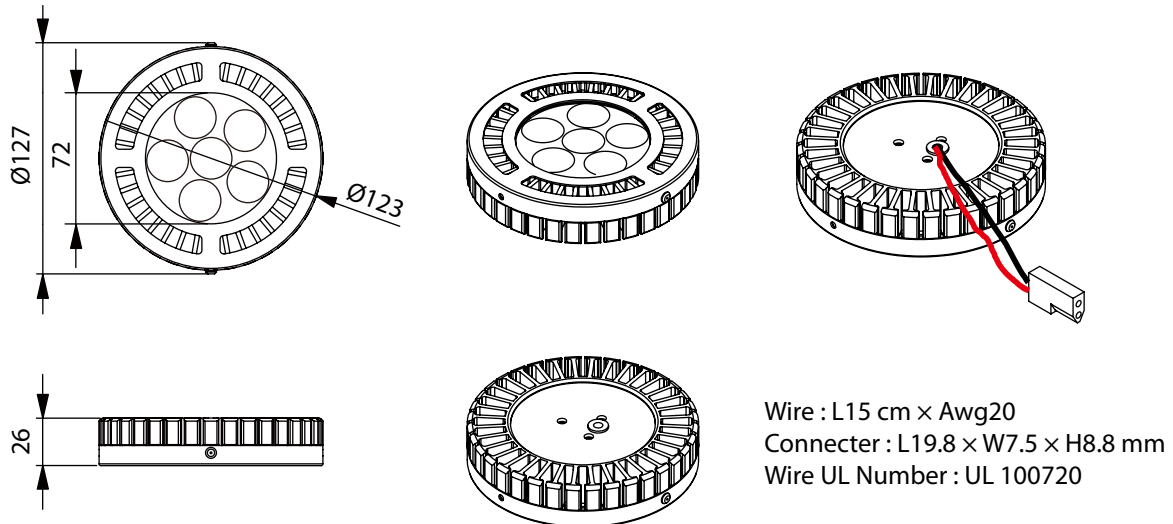


Figure 1: 10W/15W M26 Module dimension

Unit: mm
 Tolerance: ±2.5 mm

Absolute Maximum Ratings

Parameter	Rating	Units
LED Junction Temperature	125	°C
Operating Temperature	-30 ~ +40	°C
Storage Temperature	-40 ~ +60	°C
DC Input Voltage	24	V
Constant Current(10W)	500	mA
Constant Current(15W)	700	mA
Equilibrium(10W)	55	°C
Equilibrium(15W)	65	°C

Table 1: 10W/15W M26 Module absolute maximum ratings

Specifications

Parameter	
Power Consumption	10 / 15 Watt
Field Angle	25° / 40°
Color Temperature	3000 / 4000 / 6000K
CRI	75 / 90
Weight(10W)	350 g
Weight(15W)	350 g

Table 2: 10W/15W M26 Module specifications

Illuminance and Beam Angles

• Cool White

Power Consumption	Part Number	CCT(Typ.)	Cone Beam Angle	Lux*@ 1m (Typ.)
10W	EDIS-M2610-WSx	6000K	25°±2.5°	3700
	EDIS-M2610-WFx		40°±1.5°	1900
15W	EDIS-M2615-WSx		25°±2.5°	5200
	EDIS-M2615-WFx		40°±1.5°	2660

• Neutral White

Power Consumption	Part Number	CCT(Typ.)	Cone Beam Angle	Lux*@ 1m (Typ.)
10W	EDIS-M2610-HSx	4000K	25°±2.5°	2700
	EDIS-M2610-HFx		40°±1.5°	1650
15W	EDIS-M2615-HSx		25°±2.5°	3780
	EDIS-M2615-HFx		40°±1.5°	2310

• Warm White

Power Consumption	Part Number	CCT(Typ.)	Cone Beam Angle	Lux*@ 1m (Typ.)
10W	EDIS-M2610-XSx	3000K	25°±2.5°	2400
	EDIS-M2610-XFx		40°±1.5°	1400
15W	EDIS-M2615-XSx		25°±2.5°	3300
	EDIS-M2615-XFx		40°±1.5°	2200

• Red

Power Consumption	Part Number	Wave Length	Field Angle	Flux*(Typ.)
10W	EDIS-M2610-RSx	620~630nm	25°	325 lm
	EDIS-M2610-RFx		40°	290 lm
15W	EDIS-M2615-RSx		25°	420 lm
	EDIS-M2615-RFx		40°	380 lm

• Blue

Power Consumption	Part Number	Wave Length	Field Angle	Flux*(Typ.)
10W	EDIS-M2610-BSx	460~475nm	25°	85 lm
	EDIS-M2610-BFx		40°	75 lm
15W	EDIS-M2615-BSx		25°	115 lm
	EDIS-M2615-BFx		40°	100 lm

• Amber

Power Consumption	Part Number	Wave Length	Field Angle	Flux*(Typ.)
10W	EDIS-M2610-ASx	585~595nm	25°	340 lm
	EDIS-M2610-AFx		40°	300 lm
15W	EDIS-M2615-ASx		25°	460 lm
	EDIS-M2615-AFx		40°	400 lm

• True green

Power Consumption	Part Number	Wave Length	Field Angle	Flux*(Typ.)
10W	EDIS-M2610-TSx	515~535nm	25°	570 lm
	EDIS-M2610-TFx		40°	470 lm
15W	EDIS-M2615-TSx		25°	660 lm
	EDIS-M2615-TFx		40°	570 lm

Table 3: 10W/15W M26 Module illuminance and beam angles

Notes:

1. Lux value is measured under thermal balance condition. (i.e. after 1 hour operation)
2. LED is a dynamic and constantly evolving technology. The final lux output of your EDIS-10W/15W M26 Module may vary.
3. Input voltage = DC 24V

Light Patterns

• 40°

EDIS-M261x-WFx ○ 6000K



EDIS-M261x-HFx ● 4000K



EDIS-M261x-XFx ● 3000K

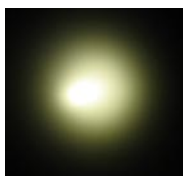


• 25°

EDIS-M261x-WSx ○ 6000K



EDIS-M261x-HSx ● 4000K



EDIS-M261x-XSx ● 3000K



• R/G/B/A

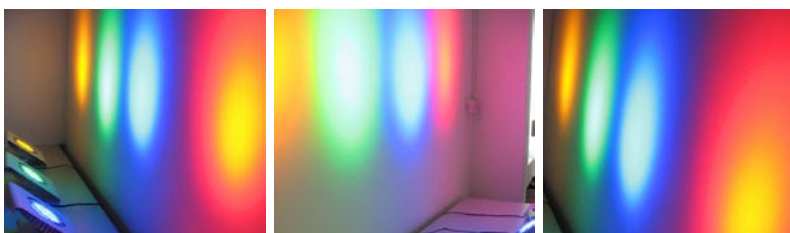


Figure 2:10W/15W M26 Module light patterns of different colors

Assembly Instructions and Recommended Driver Specification

Input Voltage	Output Voltage	Operating Current (Constant)	Rated Power
AC 100~240V	DC18~24V	500mA	> 12W
AC 100~240V	DC18~24V	700mA	> 17W

Table 4: Specification of recommended driver

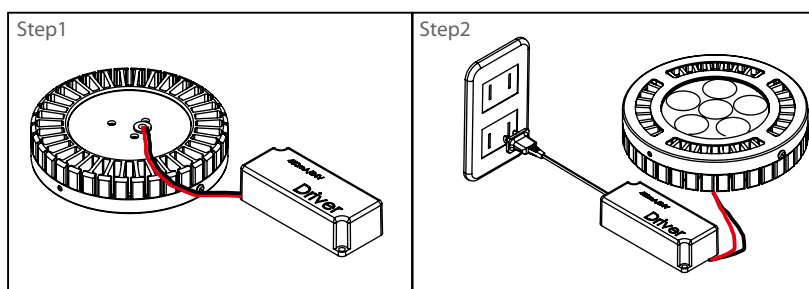


Figure 3: Assembly Instructions

• Assembly Instructions :

1. Connect the 10W/15W M26 Module to the DC driver shown as step 1.

2. Plug the driver to AC outlet shown as step 2.

Caution: Never plug the driver to AC outlet before the 10W/15W M26 Module is properly connected as this may damage the LEDs permanently.

Application Notes

The compact and integral design of the EDIS-10W/15W M26 Module make it ideal for a wide variety of lighting applications, including retail store spot light, ceiling downlight, and many other accent lightings.



Various colors and beam pattern options are suitable for an array of scenarios.

