



## FOR APPROVAL

### 承认书

产品名称/Type	Enclosed Switch-Mode Power Supply 封闭式开关电源	
产品型号/Model	ESE060-12M	
产品编码/ Product code:	DW060K1200	
输入电压/Input voltage	<input type="checkbox"/> 100-120VAC <input checked="" type="checkbox"/> 220-240VAC <input type="checkbox"/> 100-240VAC <input type="checkbox"/> 其他____ VAC	
输出模式/Out type	<input type="checkbox"/> 恒流/C.C <input checked="" type="checkbox"/> 恒压/C.V	
绝缘等级/Insulation	<input checked="" type="checkbox"/> Class I <input type="checkbox"/> Class II	
防护等级/IP Grade	<input checked="" type="checkbox"/> IP20 <input type="checkbox"/> IP65 <input type="checkbox"/> IP____	
安装方式/Installation	<input type="checkbox"/> 独立式/Independent <input checked="" type="checkbox"/> 内装式/build-in <input type="checkbox"/> 插墙式/Plug-in	
RoHS	符合欧盟 RoHS 要求 Conform to RoHS	
客户/CUSTOMER		
客户编号/ Customer part NO.		
客户认可回签(章) AUTHORIZED SIGNATURE &COMPANY CHOP		
编制/Drew up by:	申康	日期 Date 2012.06.28
批准/Approved by:	刘维勋	日期 Date 2012.06.28


## **EAGLERISE ELECTRIC & ELECTRONIC (CHINA) CO., LTD.**

Add: Gui cheng Sci-Tech Industrial Park, Jian ping Road, Nan hai District, Fo shan City, Guangdong Province, P.R. China

Tel: (0757) 86256632 Fax: (0757) 86256780

DZ-YF3-002-10B

一.KEY FEATURES (产品特点)

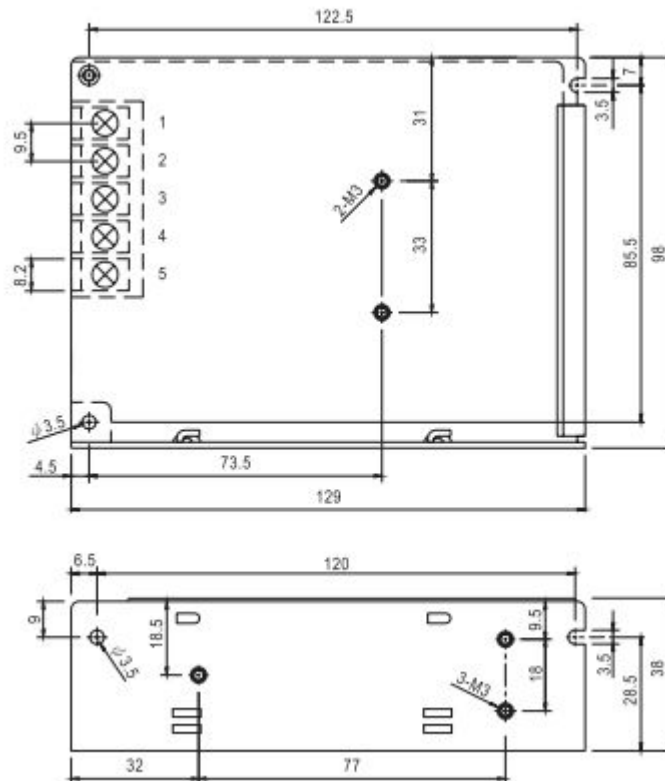
<p>▲Unicersal Input:176-264VAC</p> <p>▲Free Air Convection (自然空冷)</p> <p>▲Protections: short circuit/over load/over voltage (保护功能: 短路/输出过载/输出过压)</p> <p>▲Green LED indicator for power on (正常工作时绿色 LED 指示)</p> <p>▲Dimension:129X98X38mm (尺寸: 129X98X38mm)</p> <p>▲2-Years Product Warranty (2 年产品保证)</p>	<p>Picture(产品图片)</p> 
---	---

二.ELECTRICAL SPECIFICATIONS (电气规格)

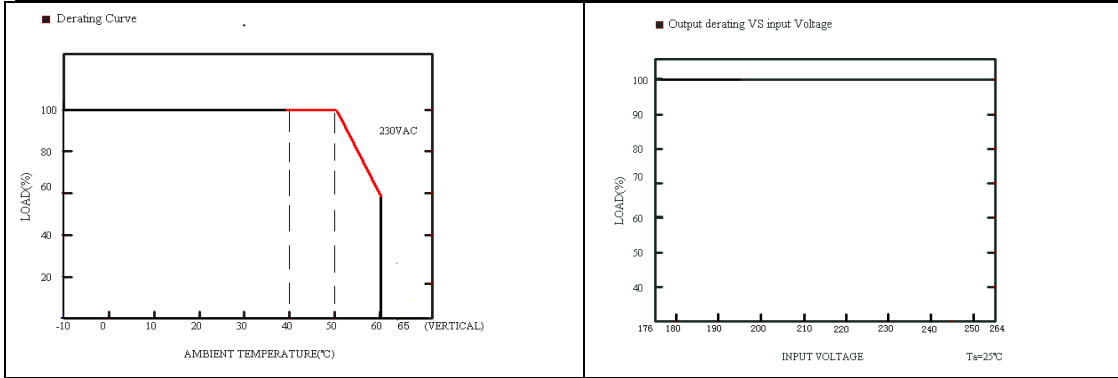
Max. Output Wattage (最大输出功率)		60W
Input (输入特性)	Rated input voltage(额定输入电压范围)	220-240VAC
	Range of input voltage (输入电压范围)	176-264VAC
	Frequency(Hz) (输入频率范围)	47—63Hz
	Power Factor(功率因素)	PF>0.5 (230VAC)at Full Load
	Current(Full load) (输入电流在输出满载时)	0.7Amax.(230VAC)
	Unload Power Consumption(空载功耗)	≤5W
	Inrush Current(浪涌电流)	<45A max.(230VAC)
Output (输出特性)	Voltage(VDC) (输出电压)	12V
	Current(Convection) (最小输出电流) (A)min	0A
	Current(Convection) (最大输出电流) (A)max	5A
	Voltage ADJ. Range(输出电压可调范围)	10.8V-13.2V
	Voltage Accuracy (电压精度)	±1%
	Line Regulation(电压调整率)	±1%
	Load Regulation(负载调整率)	±1%
	Hold-up Time(输出保持时间)	10 ms min
	Ripple & Noise (max) (纹波与噪声)	<100mV
	Efficiency(Typ.)(典型效率)	82%
Protection (保护特性)	Over Load(输出过载)	105-150% rated output power Protection type: Auto recovery(保护类型: 自动恢复)
	Over Voltage Protection(输出过压保护)	14-16V Protection type : Auto recovery (保护类型: 自动恢复)
	Short circuit Protection(短路保护)	Protection type: Auto recovery (保护类型: 自动恢复)
withstand voltage (耐压)	Input-Output(V.AC)(输入-输出)	3000V
	Input-FG(V.AC)(输入-地)	1500V
	Output-FG(V.AC)(输出-地)	500V
	Leakage Current(泄漏电流)	<1mA (240VAC)

Isolation resistance (绝缘阻抗)	Input-Output(V.AC)(输入-输出)	$\geq 4M\Omega @ 500Vdc$
	Input-FG(V.AC)(输入-地)	$\geq 4M\Omega @ 500Vdc$
	Output-FG(V.AC)(输出-地)	$\geq 4M\Omega @ 500Vdc$
Environment (环境特性)	Operating Temperature(工作温度)	-10℃...60℃
	Storage Temperature(存储温度)	-25℃...+80℃
	Temperature Coefficient(温度系数)	$\pm 0.03\%/^{\circ}C(0-50^{\circ}C)$
	Humidity(湿度)	95%RH
	MTBF	$> 50,000h @ 25^{\circ}C(MIL-HDBK-217F)$
	Vibration(振动)	10-500Hz,2G 10min./1cycle,60min.each along X,Y,Z axes
Others(其它)	Dimension (尺寸)(LXWXH)	129X98X38
Safety & EMC (安规与电磁兼容)	Safety standards (安全标准)	UL60950,EN60950
	EMI(Conducted & Radiated Emission) (传导与辐射干扰)	EN 55011 class B EN55022 class B
Note (备注)	<p>1:All parameters NOT specially mentioned are measured at 230VAC input, rated and 25℃ of ambient temperature (所有的参数无特别说明的都是在额定的输入交流 230V 和 25℃ 的环境温度下测得)</p> <p>2.Ripple &amp; Noise are measured at 20MHz of bandwidth by using a 300mm twisted pair-wire terminated with a 0.1uF &amp; 47 uF parallel capacitor. (纹波与噪声测试的标准: 用双绞线测试在 300mm 处并联 0.1uF 与 47 uF 的电容, 示波器用 20MHz 带宽)</p>	

### 三. MECHANICAL SPECIFICATIONS (机械规格)



### 四. DERATING (降额曲线)



**五、 DESCRIPTIONS OF CHANGE (变更描述)**

变更项目 ITEM	变更前 BEFORE	变更后 AFTER	版本 Version	变更日期 DATE