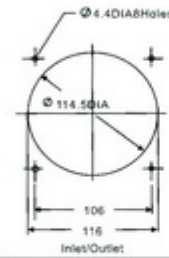
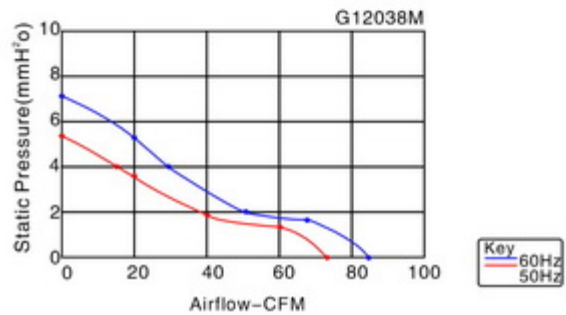
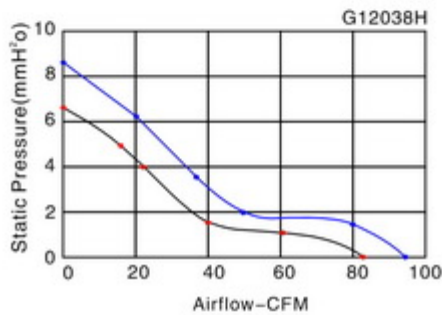


尺寸 Size:120mmx120mmx38mm  
风量 Airflow:122~162m<sup>3</sup>/hr  
72~95CFM

重量 Weight:480g  
噪音 Noise:39~48dBA  
风叶 Impeller: PBT Thermoplastic Black,UL94-V0  
外框 Frame:Aluminum Alloy  
端子 Terminals:0.5mm  
引线 Lead Wire: AWG#22 UL 1007(Optional)  
马达 Motor:Shaded Pole Induction Motor  
安规认证 Safety: UL > CUL > TUV > CE >   
温度范围 Operation Temperature:-10°C~+65°C



Model (型号)	Bearing System (轴承型式)	Voltage VAC (电压)	Freq. Hz (频率)	Current A (电流)	Power W (功率)	Speed RPM (转速)	Noise dBA (噪音)	Air Flow (风量)		Phase (相数)	Capacitor (电容)
								M3/hr	CFM		
G12038HA,S	Sleeve	100~125	50/60	0.28	21	2600/3000	43/48	138/162	82/95	1	/
G12038HA,S		200~240	50/60	0.14	21	2600/3000	43/48	138/162	82/95	1	/
G12038HA,S		380~420	50/60	0.08	21	2600/3000	43/48	138/162	82/95	1	/
G12038HA,B	Ball	100~125	50/60	0.28	21	2600/3000	43/48	138/162	82/95	1	/
G12038HA,B		200~240	50/60	0.14	21	2600/3000	43/48	138/162	82/95	1	/
G12038HA,B		380~420	50/60	0.18	21	2600/3000	43/48	138/162	82/95	1	/
G12038MA,S	Sleeve	100~125	50/60	0.22	19	2200/2600	39/44	122/144	72/85	1	/
G12038MA,S		200~240	50/60	0.11	19	2200/2600	39/44	122/144	72/85	1	/
G12038MA,B	Ball	100~125	50/60	0.22	19	2200/2600	39/44	122/144	72/85	1	/
G12038MA,B		200~240	50/60	0.11	19	2200/2600	39/44	122/144	72/85	1	/



Key  
— 60Hz  
— 50Hz