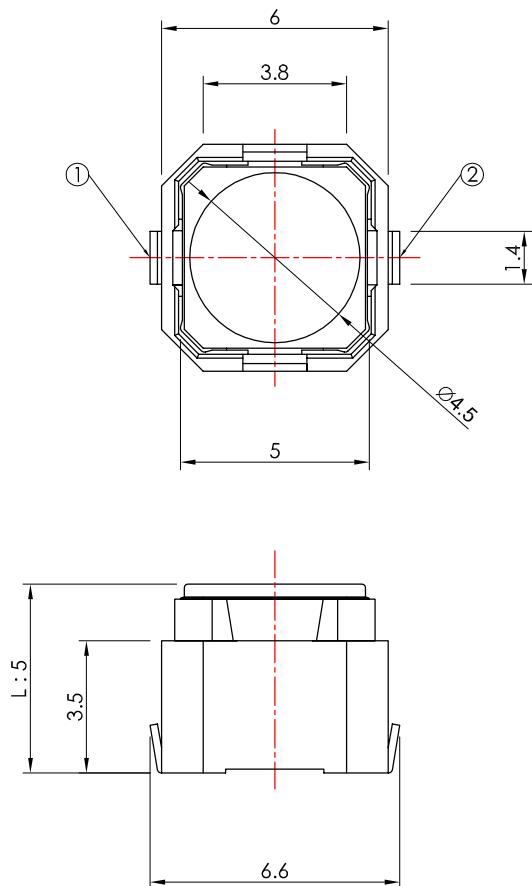
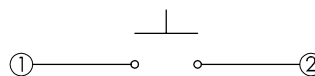


本圖面若與目錄之規格尺寸不符，以本圖面規格尺寸為主。
Below is our main specification if different from catalog.

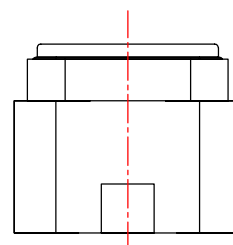
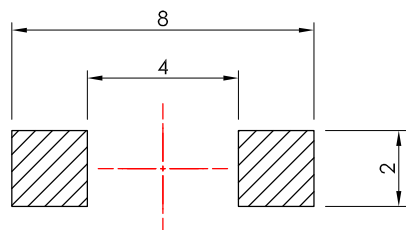
RoHS compliant



CIRCUIT DIAGRAM



P.C.B. LAYOUT



RoHS compliant

IT-1199X-XXXG-G

MODEL NO.	L	OPERATING FORCE
□	4.3	250, 300, 350
A	5.0	
B	5.2	

SPECIFICATION

- Rating:** 50mA 16V DC.
- Function:** OFF-(ON).
- Travel:** 1.3±0.3mm.
- Contact resistance:** 500mΩ Max.(initial)
- Operating force:** 250±70g.
- Minimum load:** 10mA 3.3V DC.(reference only)
- Operating Life:** 100,000 Cycles Min.
- Soldering temperature:** 250°C Max. for 3 Sec.
- Soldering time:** 1 time only.
- Note:** Unwashable, don't be immersed by epoxy and organic solvent.



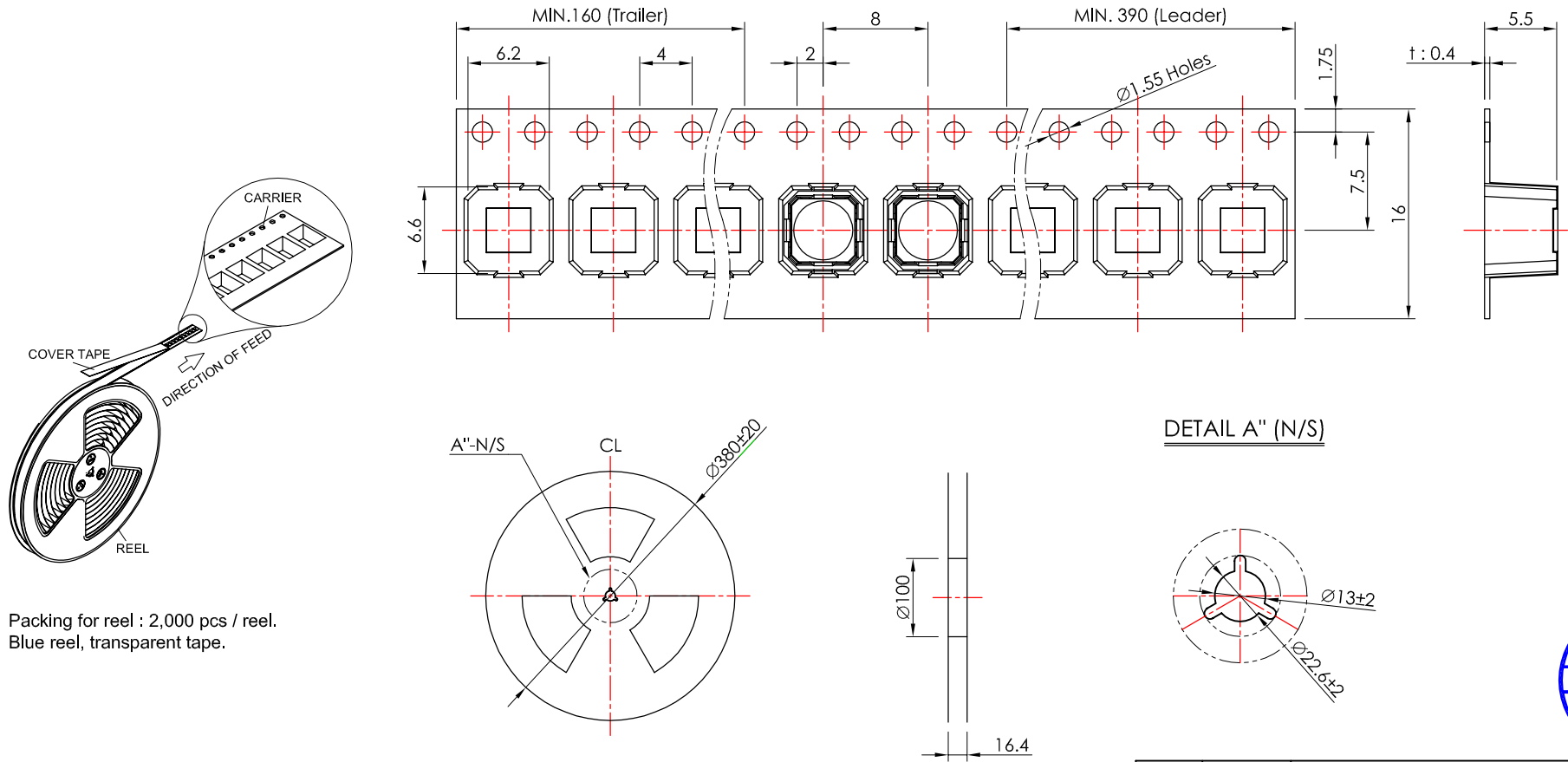
CV3.1	△		
CV3.0	無	新繪製	2011.06.30
版本 VER.	符號 SYMBOL	修改內容 ALTERATION	更新日期 DATE

產品 PRODUCT		Tact Switch		型號 MODEL NO.		IT-1199A-250G-G	
比例 SCALE	5 : 1	單位 UNIT	mm	<p>一綺電子企業股份有限公司</p> <p>總公司：110 台北市信義路四段415號12樓之2 12F-2 NO. 415, SEC. 4, HSIN YI ROAD, TAIPEI, TAIWAN TEL : 886-2-27290229 (Rep.) FAX : 886-2-27582086 URL : http://www.switronic.com.tw E-MAIL : switches@ms36.hinet.net</p>			
公差 TOLERANCE	.X=±0.3mm, .XX=±0.2mm						
製圖 DRAWN BY	核圖 CHECKED BY	主管 APPROVED BY					
Jay Kang	Nail Chen	Margaret Lee					

版本：V2.2

本圖面若與目錄之規格尺寸不符，以本圖面規格尺寸為主。
Below is our main specification if different from catalog.

RoHS compliant



Packing for reel : 2,000 pcs / reel.
Blue reel, transparent tape.

MATERIAL

Cover tape: Polyester.
Carrier: Polystyrene.
Reel: Plastic.

CV3.1	△		
CV3.0	無	新繪製	2011.07.29
版本 VER.	符號 SYMBOL	修改內容 ALTERATION	更新日期 DATE



產品 PRODUCT	Tact Switch		型號 MODEL NO.	IT-1199X T&R
製圖 DRAWN BY	核圖 CHECKED BY	主管 APPROVED BY	單位 UNIT	mm
Jay Kang	Neil Chen	Margaret Lee	比例 SCALE	2 : 1
			公差 TOLERANCE	±0.3mm

SWITRONIC
INDUSTRIAL CORP.
Switches



一綺電子企業股份有限公司

總公司：110 台北市信義路四段415號12樓之2
12F-2 NO. 415, SEC. 4, HSIN YI ROAD, TAIPEI, TAIWAN
TEL : 886-2-27290229 (Rep.) FAX : 886-2-27582086
URL : <http://www.switronic.com.tw>
E-MAIL : switches@ms36.hinet.net

一綺電子企業股份有限公司 SWITRONIC INDUSTRIAL CORP.

MODEL NO: IT-1199 Series

CV3.0

V.DATE:2011/06/30

1. Features

- 1-1 Horizontal mounting type and small, low profile design..
- 1-2 Reflow solderable.
- 1-3 Soft feeling

2. Applications

From the operating various of Auto Mobile, Car AV equipments..

3. Temperature range

Parameter	Value	Unit
Operating temperature range	-40 ~ 80	℃
Preservative temperature range	-5 ~ 50	℃

4. Standard conditions

Parameter	Value	Unit
Ambient temperature	5 ~ 35	℃
Relative humidity	45 ~ 85	% Rh
Air pressure	860 ~ 1060	mBar

If doubt arises on the design based on the measured values under the above mentioned conditions, the following conditions shall be employed.

Parameter	Value	Unit
Ambient temperature	18 ~ 22	℃
Relative humidity	60 ~ 70	% Rh
Air pressure	860 ~ 1060	mBar

5. Contact arrangement

1 Pole / 1 Throw

6. Type of actuating

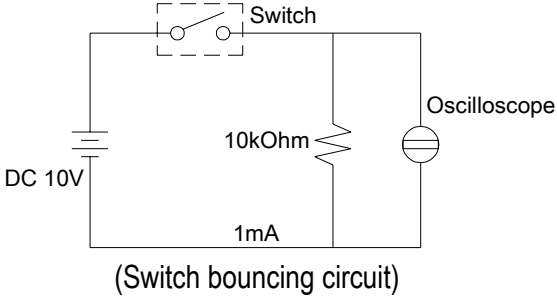
Tactile feedback



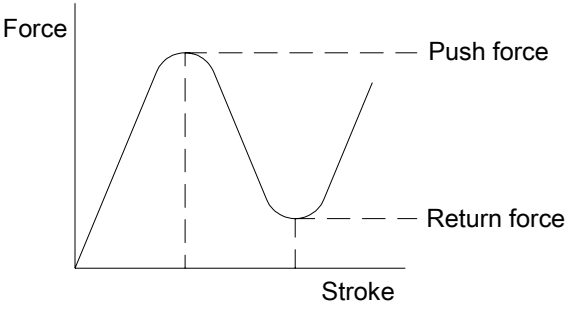
7. Rating

Maximum rating	16 V (DC) , 50 mA
Minimum rating	3.3 V (DC) , 10mA

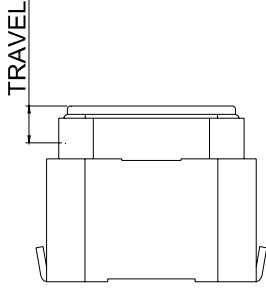
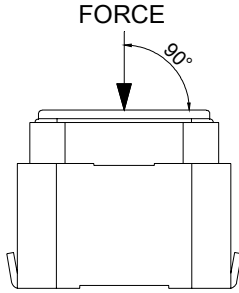
8. Electrical characteristics

No	Item	Test conditions	Evaluation
1	Contact resistance	1-1 Push force : Operating force X 2 1-2 Small current contact resistance meter : 1Khz , 20mV , 5 50mA	500mΩ MAX.
2	Insulation resistance	100V (DC) / 1 Minute (Between terminal)	100MΩ MIN.
3	Dielectric withstand voltage	AC 250V (50Hz OR 60Hz) / 1 Minute (Between terminal)	No break down
4	Bouncing	3 to 4 Operations per second 	On / Off : 10ms MAX.

9. Mechanical characteristics

No	Item	Test conditions	Evaluation
1	Operating force	 Push by recommended operating conditions	Push force : As per assembly drawing Return force : 10gf MIN.

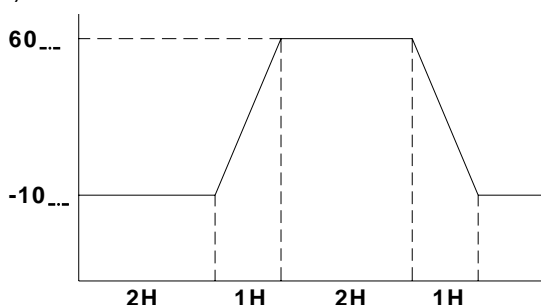


2	Travel	<p>Operating force x 2</p> 	As per assembly drawing
3	Stem strength	<p>3Kgf for 15 sec.</p> 	No damage (Electrical and Mechanical)
4	Soldering heat test	<p>Mounted the switch on P.W.B by adhesive. 1) Reflow process one time. 2) Standard conditions after test : 24 Hours</p>	No damage (Electrical and Mechanical)

10. Environmental

No	Item	Test conditions	Evaluation
1	Storage heat	1) $+80 \pm 2$, 96 Hours 2) Standard conditions after test 1 Hour.	After the test the part shall satisfy. Specifications without any degradation in appearance and performance.
2	Storage cold	1) -30 ± 2 , 96 Hours 2) Standard conditions after test 1 Hour.	
3	Humidity	1) 40 ± 2 , 90 95% Rh , 96 Hours 2) Standard conditions after test 1 Hour.	



4	Temperature cycle	1) Test cycles : 5 Cycles 2) Standard conditions after test 1 Hour. 	
---	-------------------	--	--

11. Endurance

No	Item	Test conditions	Evaluation
1	Operating life	1) 5V (DC) , 50mA 2) 15 20 Cycles/Min , Maximum value of operating force. 3) 100,000 Cycles MIN.	After the test the part shall satisfy. Specifications without any degradation in appearance and performance.
2	Salt spray	1) Temperature : 35 ± 2 2) Cycle : 8 Hours testing (3 Times) and 1 Hour stop. Based on total 24 hours. 3) Salt solution concentration : $5 \pm 1\%$ by weight.	

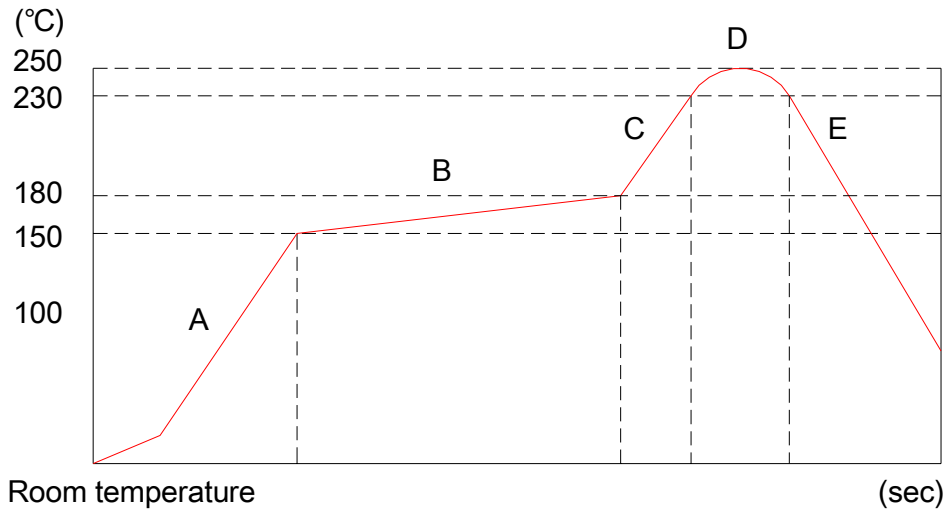
Notes

As this product is not protected from foreign material entering, please make sure that any foreign material (E.G Magnetic powder, Washing solvent, Flux, Corrosive gas) DO NOT enter this product in your production process.



12. Solder conditions

12-1 SMD Reflow



Parts	Temperature (°C)	Time at temperature(sec)	Treatments
A	NO - 150		
B	150 - 180	90 ± 30	Pre-heating zone
C	180 - 230		
D	230 – 250 - 230	30 ± 10 (Peak : 3 MAX.)	Soldering zone
E	230 to NO		Cooling zone

** NO : Normal conditions

12-2 Solder cream thickness

0.15 ± 0.03

12-3 Manual soldering

12-3-1 Iron tip temperature : 350 ± 5°C MAX.

12-3-2 Duration : 3sec MAX.



一綺電子企業股份有限公司
SWITRONIC INDUSTRIAL CORP.

Material Certificate Sheet

Product	Tact Switch
Model No.	IT-1199 Series

CV3.0

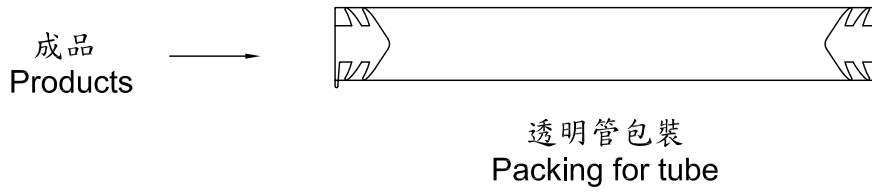
DATE : 2011.07.04

No.	Parts Name	Material	Specification	Remark	LAB	Test Report No.
1	Stem	Polymer	KEPAMID 2330GFH NT		SGS	F690501/LF-CTSAYAA10-36522
2	Rubber	Silicone	SE 4708		SGS	F690501/LF-CTSAYAA11-16240
3	Contact	Phosphor bronze-Ag	C5210	Silver Cyanide	SGS	C5210 : F690501/LF-CTSAYAU10-05135 Silver Cyanide : F690501/LF-CTSAYAA11-12813
4	Terminal	Brass	C2680	Silver Cyanide	SGS	C2680 : F690501/LF-CTSAYAU10-05130 Silver Cyanide : F690501/LF-CTSAYAA11-12813
5	Case	Liquid Crystal Polymer	ZENITE 6130L WT		SGS	F690501/LF-CTSAYAA11-02140
6						
7						
8						
9						
10						

一綺電子企業股份有限公司 SWITRONIC INDUSTRIAL CORP.

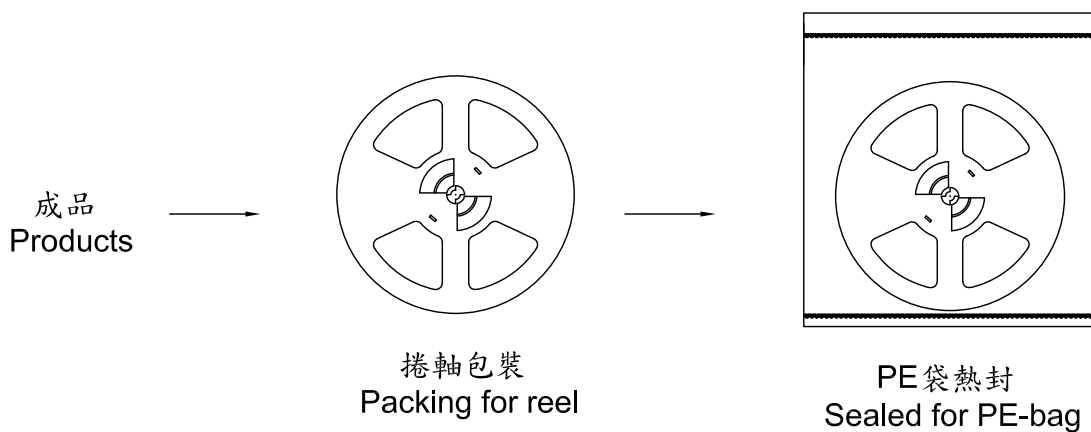
入料包裝方式 Packing for Products

管裝方式 Packing for tube



Packing for tube : _____ pcs / tube.

捲裝方式 Packing for reel



Packing for reel : 2,000 pcs / reel , 1 reel / polybag.

Quantity thickness for polybag : 0.08 mm , Quantity desiccating agent : 1 pcs.

一綺電子企業股份有限公司 SWITRONIC INDUSTRIAL CORP.

產品綠色環保標章

"G" Mark for All RoHS Compliant Products

環保標章式樣

Initial "G": Standing for Green Label



外箱標示

Marked on The Outside of Carton As:





Test Report No. F690501/LF-CTSAYAA10-36522

Issued Date: October 29, 2010

Page 1 of 4

To: KOREA ENGINEERING PLASTICS
402, Chupal-ri
Paengsung-ub
Pyeongtaek-city
GYEONGGI-DO 451-805
korea

The following merchandise was submitted and identified by the client as :

SGS File No. : AYAA10-36522
Product Name : KEPAMID 2330GFH NT
Item No./Part No. : N/A
Client Reference Data : 2315GF NT, 2315GHS NT, 2320GF NT, 2325GFH NT, 2325GFS NT,
2330GF NT, 2330GFH NT02, 2333GFH NT02, 2335GFH NT, 2345GF NT
Received Date : Oct. 26, 2010
Test Period : Oct. 27, 2010 to Oct. 29, 2010
Test Performed : SGS Testing Korea tested the sample(s) selected by applicant with following results
Test Results : For further details, please refer to following page(s)
Comments : The client has confirmed that the described item No.s/part No.s and client reference data are the same with the sample submitted.

Timothy Jeon
Jinhee Kim
Cindy Park
Jerry Jung/ Testing Person

SGS Testing Korea Co. Ltd.

Jeff Jang / Chemical Lab Mgr



Test Report No. F690501/LF-CTSAYAA10-36522

Issued Date: October 29, 2010

Page 2 of 4

Sample No. : AYAA10-36522.001
Sample Description : KEPAMID 2330GFH NT
Item No./Part No. : N/A

Heavy Metals

Test Items	Unit	Test Method	MDL	Results
Cadmium (Cd)	mg/kg	US EPA 3051, US EPA 6010B(1996), ICP	0.5	N.D.
Lead (Pb)	mg/kg	US EPA 3051, US EPA 6010B(1996), ICP	5	N.D.
Mercury (Hg)	mg/kg	US EPA 3051, US EPA 6010B(1996), ICP	2	N.D.
Hexavalent Chromium (Cr VI)	mg/kg	With reference to US EPA 3060A(1996), US EPA 7196A(1992), UV	1	N.D.

Flame Retardants-PBBs/PBDEs

Test Items	Unit	Test Method	MDL	Results
Monobromobiphenyl	mg/kg	US EPA 3540C, GC/MS	5	N.D.
Dibromobiphenyl	mg/kg	US EPA 3540C, GC/MS	5	N.D.
Tribromobiphenyl	mg/kg	US EPA 3540C, GC/MS	5	N.D.
Tetrabromobiphenyl	mg/kg	US EPA 3540C, GC/MS	5	N.D.
Pentabromobiphenyl	mg/kg	US EPA 3540C, GC/MS	5	N.D.
Hexabromobiphenyl	mg/kg	US EPA 3540C, GC/MS	5	N.D.
Heptabromobiphenyl	mg/kg	US EPA 3540C, GC/MS	5	N.D.
Octabromobiphenyl	mg/kg	US EPA 3540C, GC/MS	5	N.D.
Nonabromobiphenyl	mg/kg	US EPA 3540C, GC/MS	5	N.D.
Decabromobiphenyl	mg/kg	US EPA 3540C, GC/MS	5	N.D.
Monobromodiphenyl ether	mg/kg	US EPA 3540C, GC/MS	5	N.D.
Dibromodiphenyl ether	mg/kg	US EPA 3540C, GC/MS	5	N.D.
Tribromodiphenyl ether	mg/kg	US EPA 3540C, GC/MS	5	N.D.
Tetrabromodiphenyl ether	mg/kg	US EPA 3540C, GC/MS	5	N.D.
Pentabromodiphenyl ether	mg/kg	US EPA 3540C, GC/MS	5	N.D.
Hexabromodiphenyl ether	mg/kg	US EPA 3540C, GC/MS	5	N.D.
Heptabromodiphenyl ether	mg/kg	US EPA 3540C, GC/MS	5	N.D.
Octabromodiphenyl ether	mg/kg	US EPA 3540C, GC/MS	5	N.D.
Nonabromodiphenyl ether	mg/kg	US EPA 3540C, GC/MS	5	N.D.
Decabromodiphenyl ether	mg/kg	US EPA 3540C, GC/MS	5	N.D.

- NOTE: (1) N.D. = Not detected.(<MDL)
(2) mg/kg = ppm
(3) MDL = Method Detection Limit
(4) - = No regulation
(5) ** = Qualitative analysis (No Unit)
(6) Negative = Undetectable / Positive = Detectable

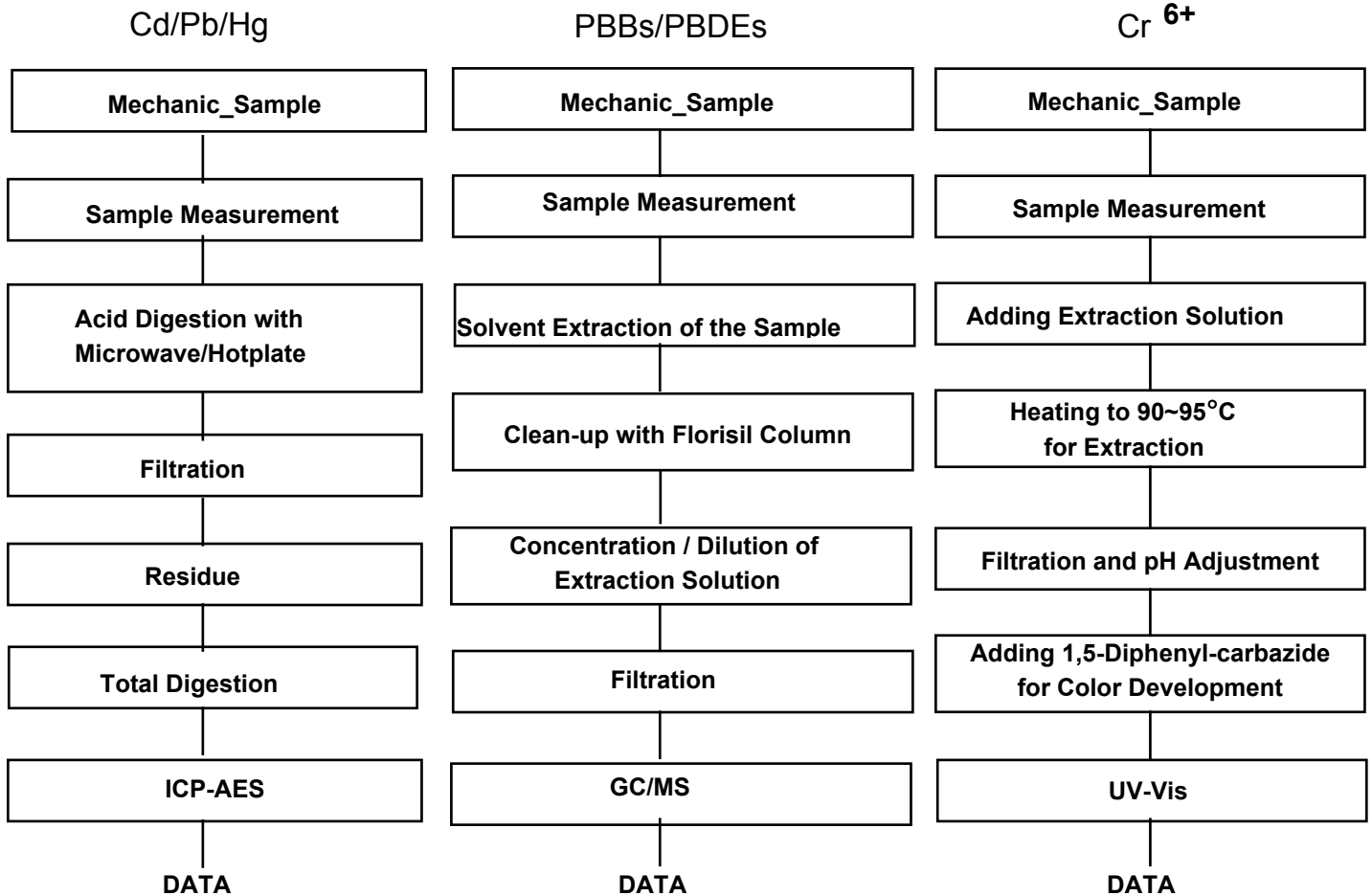
This document is issued by the Company subject to its General Conditions of Service printed overleaf, available on request or accessible at www.sgs.com/terms_and_conditions.htm and, for electronic format documents, subject to Terms and Conditions for Electronic Documents at www.sgs.com/terms_e-document.htm. Attention is drawn to the limitation of liability, indemnification and jurisdiction issues defined therein. Any holder of this document is advised that information contained hereon reflects the Company's findings at the time of its intervention only and within the limits of Client's instructions, if any. The Company's sole responsibility is to its Client and this document does not exonerate parties to a transaction from exercising all their rights and obligations under the transaction documents. This document cannot be reproduced except in full, without prior written approval of the Company. Any unauthorized alteration, forgery or falsification of the content or appearance of this document is unlawful and offenders may be prosecuted to the fullest extent of the law. Unless otherwise stated the results shown in this test report refer only to the sample(s) tested and such sample(s) are retained for 180 days only.

Picture of Sample as Received:



- NOTE:**
- (1) N.D. = Not detected.(<MDL)
 - (2) mg/kg = ppm
 - (3) MDL = Method Detection Limit
 - (4) - = No regulation
 - (5) ** = Qualitative analysis (No Unit)
 - (6) Negative = Undetectable / Positive = Detectable

Testing Flow Chart for RoHS: Cd/Pb/Hg/Cr⁶⁺/PBBs&PBDEs Testing



The samples were dissolved totally by pre-conditioning method according to above flow chart for Cd,Pb,Hg.

Section Chief : Gilse Lee

*** End ***

- NOTE:
- (1) N.D. = Not detected.(<MDL)
 - (2) mg/kg = ppm
 - (3) MDL = Method Detection Limit
 - (4) - = No regulation
 - (5) ** = Qualitative analysis (No Unit)
 - (6) Negative = Undetectable / Positive = Detectable



Test Report No. F690501/LF-CTSAYAA11-16240

Issued Date: 2011. 05. 23 Page 1 of 5

To: CREATIVE ELECTRONICS CO., LTD
Rm 317 Namkwang centlex
Cheongcheon-dong
Bupyeong-gu
INCHEON
Korea

The following merchandise was submitted and identified by the client as :

SGS File No. : AYAA11-16240
Product Name : SE 4708
Item No./Part No. : CTT-1199 Rubber
Received Date : 2011. 05. 18
Test Period : 2011. 05. 19 to 2011. 05. 23
Buyer(s) : SAMSUNG,LG
Test Results : For further details, please refer to following page(s)
Test Performed : SGS Korea tested the sample(s) selected by applicant with following results.

Timothy Jeon
Jinhee Kim
Cindy Park
Jerry Jung/ Testing Person

SGS Korea Co. Ltd.

Jeff Jang / Chemical Lab Mgr



Test Report No. F690501/LF-CTSAYAA11-16240

Issued Date: 2011. 05. 23 Page 2 of 5

Sample No. : AYAA11-16240.001
Sample Description : SE 4708
Item No./Part No. : CTT-1199 Rubber

Heavy Metals

Test Items	Unit	Test Method	MDL	Results
Cadmium (Cd)	mg/kg	With reference to IEC 62321:2008, ICP	0.5	N.D.
Lead (Pb)	mg/kg	With reference to IEC 62321:2008, ICP	5	N.D.
Mercury (Hg)	mg/kg	With reference to IEC 62321:2008, ICP	2	N.D.
Hexavalent Chromium (Cr VI)	mg/kg	With reference to IEC 62321:2008, UV-VIS	1	N.D.

Flame Retardants-PBBs/PBDEs

Test Items	Unit	Test Method	MDL	Results
Monobromobiphenyl	mg/kg	With reference to IEC 62321:2008, GC-MS	5	N.D.
Dibromobiphenyl	mg/kg	With reference to IEC 62321:2008, GC-MS	5	N.D.
Tribromobiphenyl	mg/kg	With reference to IEC 62321:2008, GC-MS	5	N.D.
Tetrabromobiphenyl	mg/kg	With reference to IEC 62321:2008, GC-MS	5	N.D.
Pentabromobiphenyl	mg/kg	With reference to IEC 62321:2008, GC-MS	5	N.D.
Hexabromobiphenyl	mg/kg	With reference to IEC 62321:2008, GC-MS	5	N.D.
Heptabromobiphenyl	mg/kg	With reference to IEC 62321:2008, GC-MS	5	N.D.
Octabromobiphenyl	mg/kg	With reference to IEC 62321:2008, GC-MS	5	N.D.
Nonabromobiphenyl	mg/kg	With reference to IEC 62321:2008, GC-MS	5	N.D.
Decabromobiphenyl	mg/kg	With reference to IEC 62321:2008, GC-MS	5	N.D.
Monobromodiphenyl ether	mg/kg	With reference to IEC 62321:2008, GC-MS	5	N.D.
Dibromodiphenyl ether	mg/kg	With reference to IEC 62321:2008, GC-MS	5	N.D.
Tribromodiphenyl ether	mg/kg	With reference to IEC 62321:2008, GC-MS	5	N.D.
Tetrabromodiphenyl ether	mg/kg	With reference to IEC 62321:2008, GC-MS	5	N.D.
Pentabromodiphenyl ether	mg/kg	With reference to IEC 62321:2008, GC-MS	5	N.D.
Hexabromodiphenyl ether	mg/kg	With reference to IEC 62321:2008, GC-MS	5	N.D.
Heptabromodiphenyl ether	mg/kg	With reference to IEC 62321:2008, GC-MS	5	N.D.
Octabromodiphenyl ether	mg/kg	With reference to IEC 62321:2008, GC-MS	5	N.D.
Nonabromodiphenyl ether	mg/kg	With reference to IEC 62321:2008, GC-MS	5	N.D.
Decabromodiphenyl ether	mg/kg	With reference to IEC 62321:2008, GC-MS	5	N.D.

NOTE: (1) N.D. = Not detected. (<MDL)

(2) mg/kg = ppm

(3) MDL = Method Detection Limit

(4) - = No regulation

(5) ** = Qualitative analysis (No Unit)

(6) * = Boiling-water-extraction:

Negative = Absence of CrVI coating

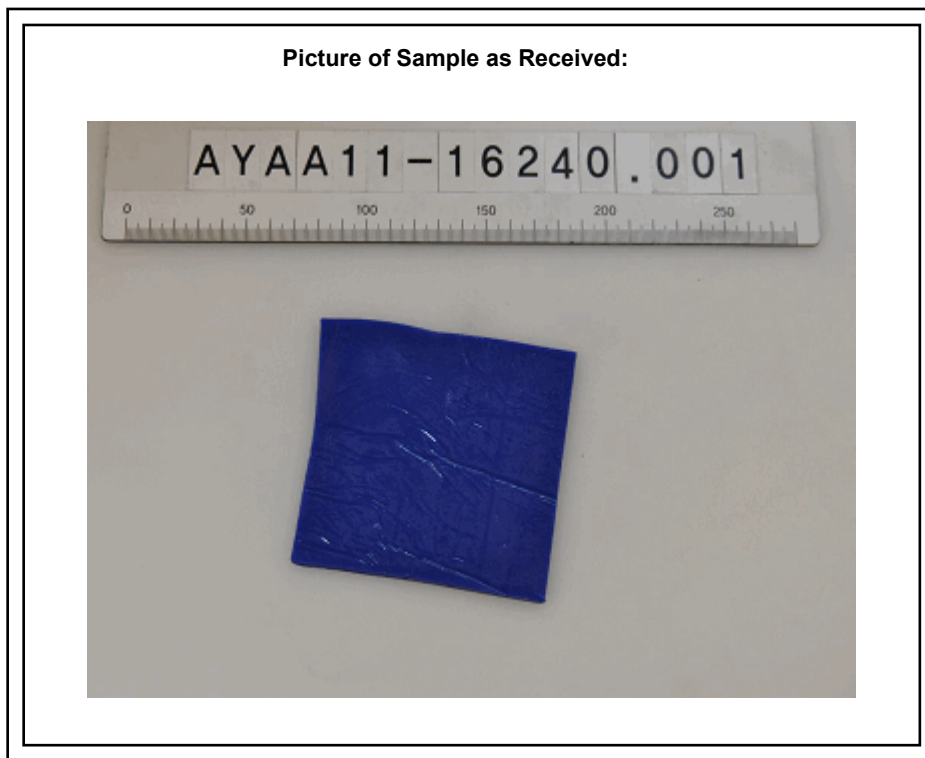
Positive = Presence of CrVI coating; the detected concentration in boiling-water-extraction solution is equal or greater than 0.02 mg/kg with 50 cm² sample surface area.

This document is issued by the Company subject to its General Conditions of Service printed overleaf, available on request or accessible at www.sgs.com/terms_and_conditions.htm and, for electronic format documents, subject to Terms and Conditions for Electronic Documents at www.sgs.com/terms_e-document.htm. Attention is drawn to the limitation of liability, indemnification and jurisdiction issues defined therein. Any holder of this document is advised that information contained hereon reflects the Company's findings at the time of its intervention only and within the limits of Client's instructions, if any. The Company's sole responsibility is to its Client and this document does not exonerate parties to a transaction from exercising all their rights and obligations under the transaction documents. This document cannot be reproduced except in full, without prior written approval of the Company. Any unauthorized alteration, forgery or falsification of the content or appearance of this document is unlawful and offenders may be prosecuted to the fullest extent of the law. Unless otherwise stated the results shown in this test report refer only to the sample(s) tested and such sample(s) are retained for 180 days only.

Sample No. : AYAA11-16240.001
Sample Description : SE 4708
Item No./Part No. : CTT-1199 Rubber

Halogen Contents

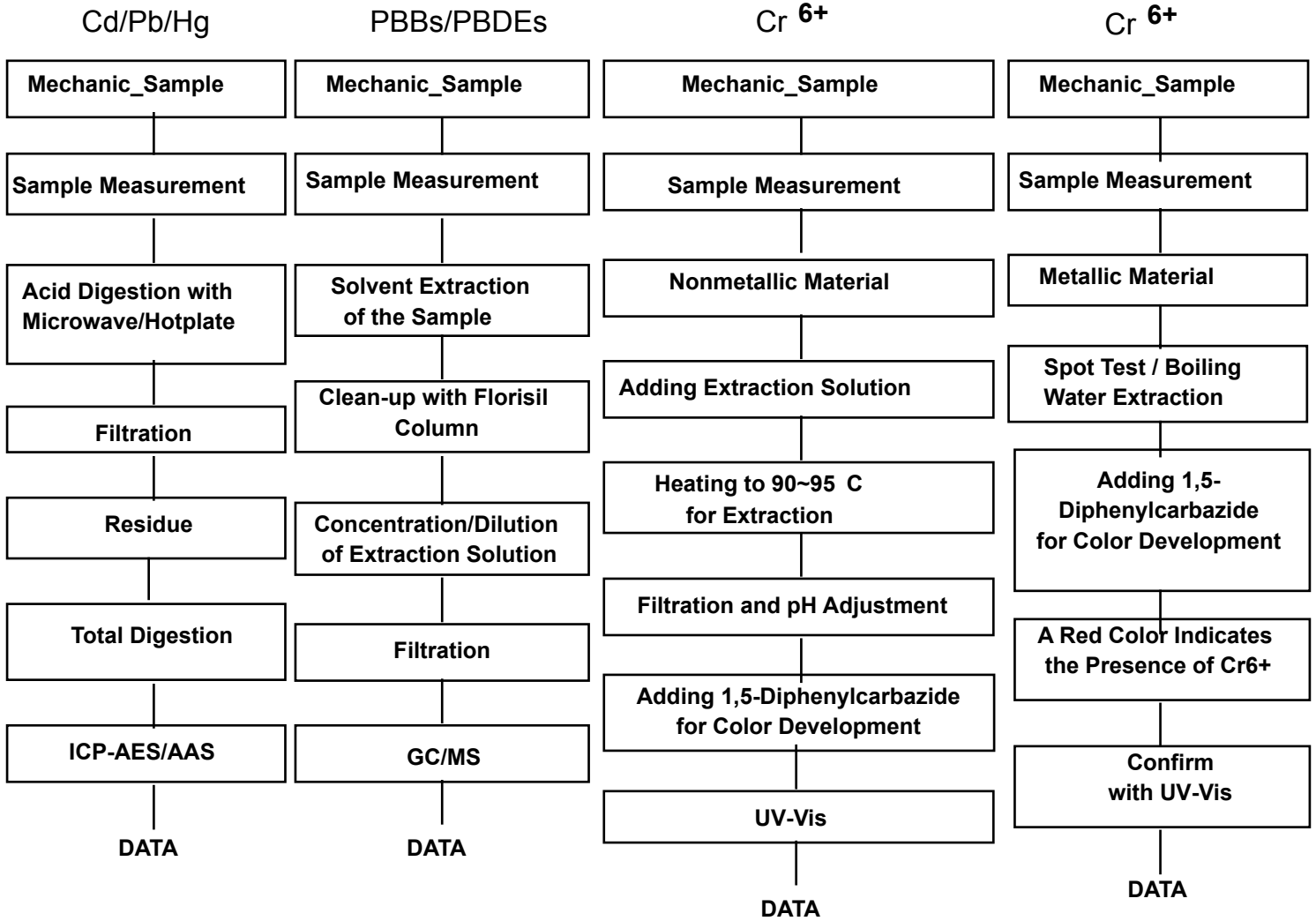
Test Items	Unit	Test Method	MDL	Results
Fluorine(F)	mg/kg	With reference to ASTM D 7359-08 , IC	30	N.D.
Chlorine(Cl)	mg/kg	With reference to ASTM D 7359-08 , IC	30	N.D.
Bromine(Br)	mg/kg	With reference to ASTM D 7359-08 , IC	30	N.D.
Iodine(I)	mg/kg	With reference to ASTM D 7359-08 , IC	50	N.D.



- NOTE:**
- (1) N.D. = Not detected.(<MDL)
 - (2) mg/kg = ppm
 - (3) MDL = Method Detection Limit
 - (4) - = No regulation
 - (5) ** = Qualitative analysis (No Unit)
 - (6) * = Boiling-water-extraction:
 Negative = Absence of CrVI coating
 Positive = Presence of CrVI coating; the detected concentration in boiling-water-extraction solution is equal or greater than 0.02 mg/kg with 50 cm2 sample surface area.



Flow Chart for RoHS: Cd/Pb/Hg/Cr⁶⁺/PBBs&PBDEs Testing



The samples were dissolved totally by pre-conditioning method according to above flow chart for Cd,Pb,Hg.

Section Chief : Gilsae Yi

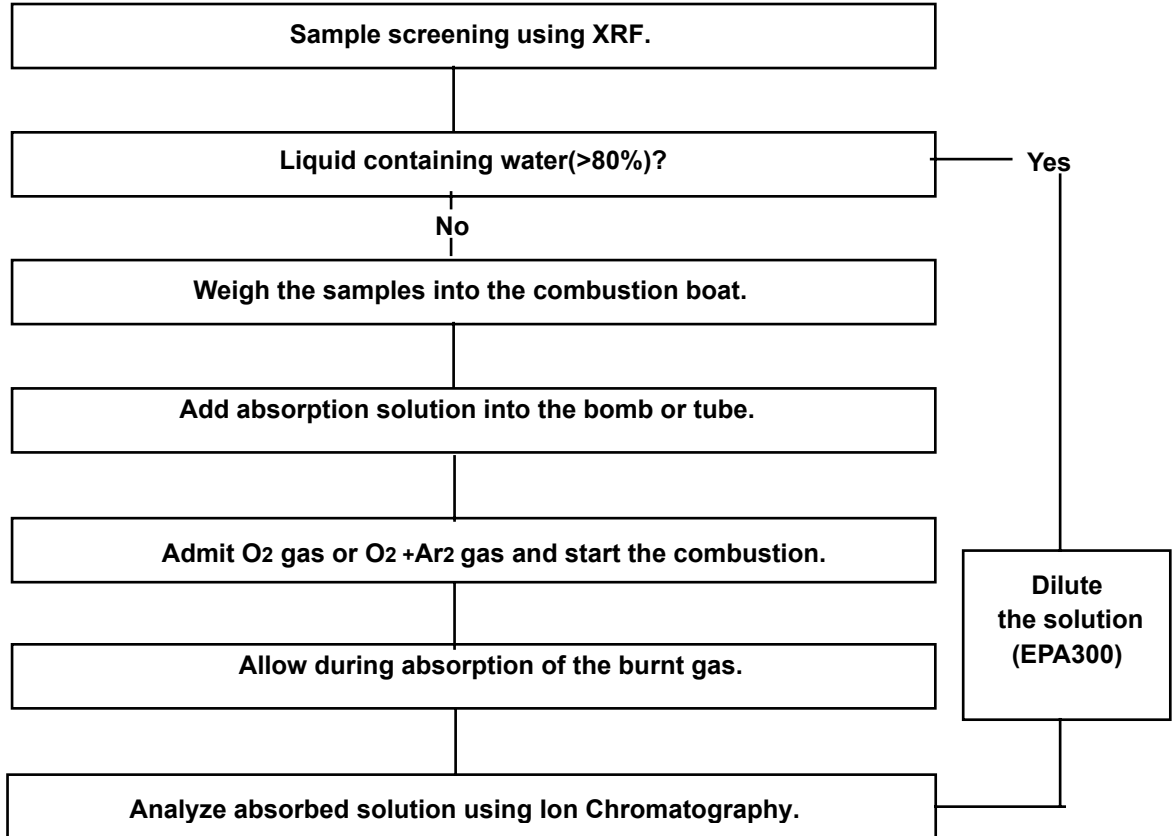
- NOTE:
- (1) N.D. = Not detected.(<MDL)
 - (2) mg/kg = ppm
 - (3) MDL = Method Detection Limit
 - (4) - = No regulation
 - (5) ** = Qualitative analysis (No Unit)
 - (6) * = Boiling-water-extraction:

Negative = Absence of CrVI coating
 Positive = Presence of CrVI coating; the detected concentration in boiling-water-extraction solution is equal or greater than 0.02 mg/kg with 50 cm² sample surface area.

This document is issued by the Company subject to its General Conditions of Service printed overleaf, available on request or accessible at www.sgs.com/terms_and_conditions.htm and, for electronic format documents, subject to Terms and Conditions for Electronic Documents at www.sgs.com/terms_e-document.htm. Attention is drawn to the limitation of liability, indemnification and jurisdiction issues defined therein. Any holder of this document is advised that information contained hereon reflects the Company's findings at the time of its intervention only and within the limits of Client's instructions, if any. The Company's sole responsibility is to its Client and this document does not exonerate parties to a transaction from exercising all their rights and obligations under the transaction documents. This document cannot be reproduced except in full, without prior written approval of the Company. Any unauthorized alteration, forgery or falsification of the content or appearance of this document is unlawful and offenders may be prosecuted to the fullest extent of the law. Unless otherwise stated the results shown in this test report refer only to the sample(s) tested and such sample(s) are retained for 180 days only.



Flow Chart for Halogen Test



*** End ***

- NOTE:
- (1) N.D. = Not detected.(<MDL)
 - (2) mg/kg = ppm
 - (3) MDL = Method Detection Limit
 - (4) - = No regulation
 - (5) ** = Qualitative analysis (No Unit)
 - (6) * = Boiling-water-extraction:

Negative = Absence of CrVI coating

Positive = Presence of CrVI coating; the detected concentration in boiling-water-extraction solution is equal or greater than 0.02 mg/kg with 50 cm² sample surface area.



Test Report No. F690501/LF-CTSAYAU10-05135

Issued Date: November 03, 2010 Page 1 of 3

To: **POONGSAN CORPORATION**
611 Daejung-ri Onsan-eup
Ulju
ULSAN
KOREA

The following merchandise was submitted and identified by the client as :

SGS File No. : AYAU10-05135
Product Name : C5210
Item No./Part No. : N/A
Received Date : Oct. 27, 2010
Test Period : Oct. 28, 2010 to Nov. 03, 2010
Test Performed : SGS Testing Korea tested the sample(s) selected by applicant with following results
Test Results : For further details, please refer to following page(s)
Conclusion : Based on the performed tests on submitted sample(s), the results **comply with the** RoHS Directive 2002/95/EC and its subsequent amendments.

SGS Testing Korea Co. Ltd. / Gimhae Laboratory

Thomas Hwang / Gimhae Lab. Mgr

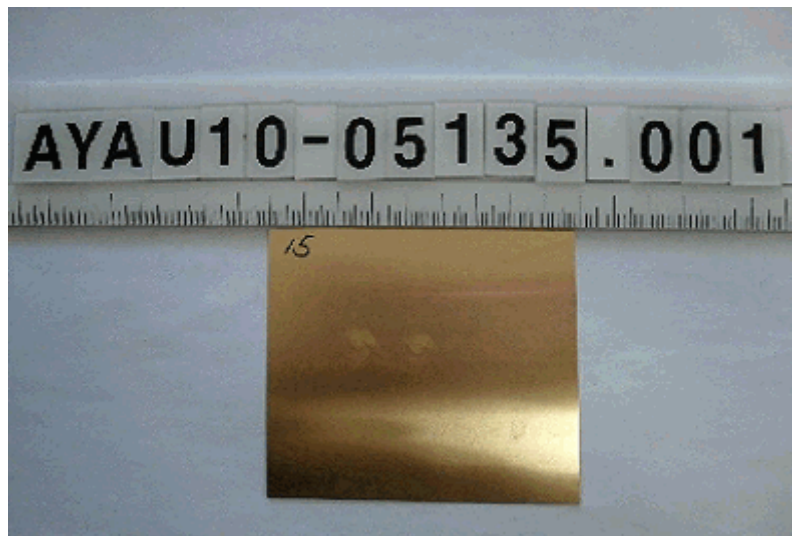
Sharpless Park
Annie Lim
Jonadan Lee /Testing Person

Sample No. : AYAU10-05135.001
 Sample Description : C5210
 Item No./Part No. : N/A

Heavy Metals

Test Items	Unit	Test Method	MDL	Results
Cadmium (Cd)	mg/kg	With reference to IEC 62321:2008, ICP	1	N.D.
Lead (Pb)	mg/kg	With reference to IEC 62321:2008, ICP	5	34.0
Mercury (Hg)	mg/kg	With reference to IEC 62321:2008, ICP	2	N.D.
Hexavalent Chromium (Cr VI) By boiling water extraction*	-	With reference to IEC 62321:2008	-	Negative

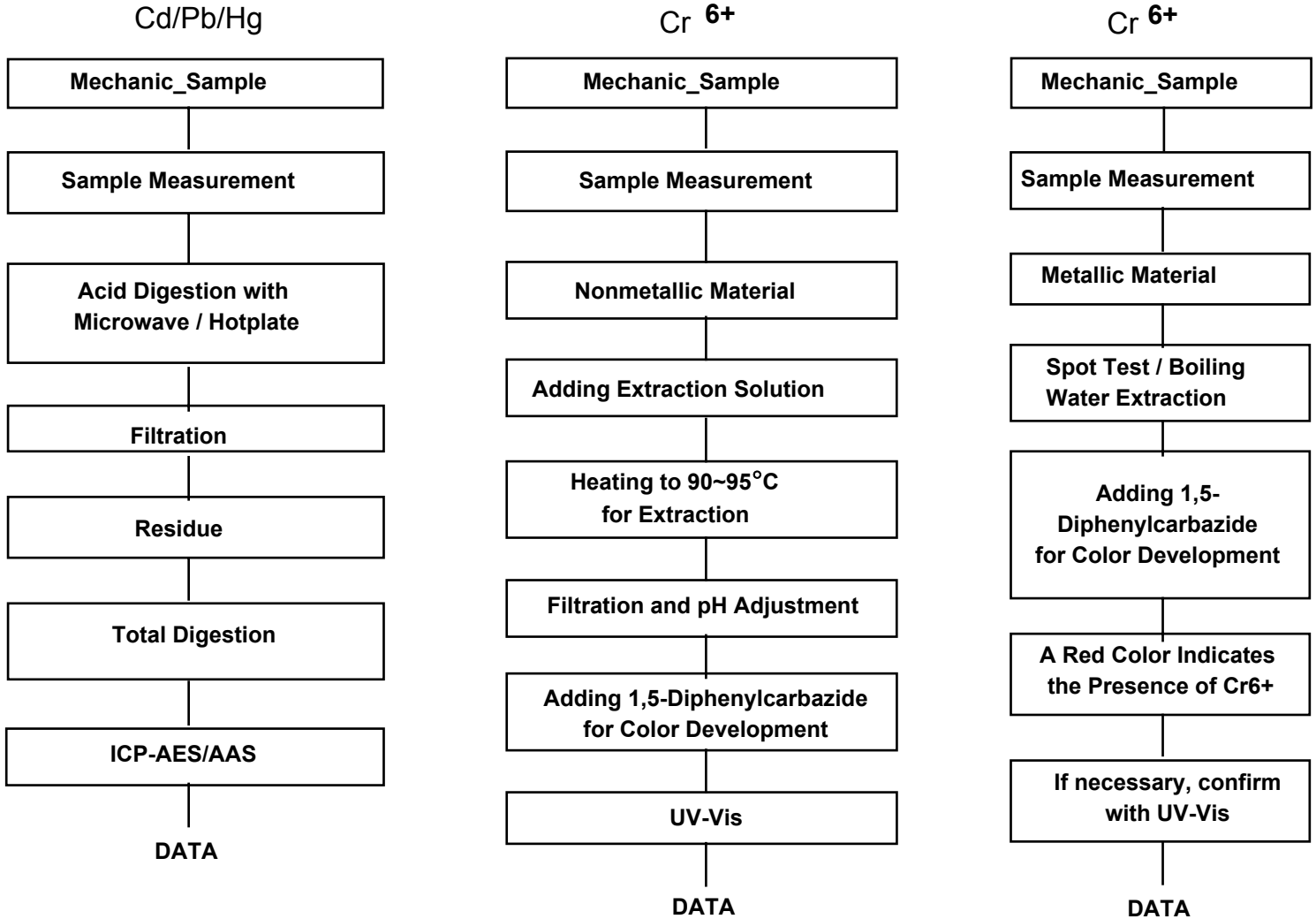
Picture of Sample as Received:



- NOTE:
- (1) N.D. = Not detected.(<MDL)
 - (2) mg/kg = ppm
 - (3) MDL = Method Detection Limit
 - (4) - = No regulation
 - (5) ** = Qualitative analysis (No Unit)
 - (6) * = Boiling-water-extraction:
 Negative = Absence of CrVI coating
 Positive = Presence of CrVI coating; the detected concentration in boiling-water-extraction solution is equal or greater than 0.02 mg/kg with 50 cm2 sample surface area.

This document is issued by the Company subject to its General Conditions of Service printed overleaf, available on request or accessible at www.sgs.com/terms_and_conditions.htm and, for electronic format documents, subject to Terms and Conditions for Electronic Documents at www.sgs.com/terms_e-document.htm. Attention is drawn to the limitation of liability, indemnification and jurisdiction issues defined therein. Any holder of this document is advised that information contained hereon reflects the Company's findings at the time of its intervention only and within the limits of Client's instructions, if any. The Company's sole responsibility is to its Client and this document does not exonerate parties to a transaction from exercising all their rights and obligations under the transaction documents. This document cannot be reproduced except in full, without prior written approval of the Company. Any unauthorized alteration, forgery or falsification of the content or appearance of this document is unlawful and offenders may be prosecuted to the fullest extent of the law.
 Unless otherwise stated the results shown in this test report refer only to the sample(s) tested and such sample(s) are retained for 180 days only.

Testing Flow Chart for RoHS: Cd/Pb/Hg/Cr⁶⁺ Testing



The samples were dissolved totally by pre-conditioning method according to above flow chart for Cd,Pb,Hg.

Section Chief : Sharpless Park

*** End ***

- NOTE:
- (1) N.D. = Not detected.(<MDL)
 - (2) mg/kg = ppm
 - (3) MDL = Method Detection Limit
 - (4) - = No regulation
 - (5) ** = Qualitative analysis (No Unit)
 - (6) * = Boiling-water-extraction:
 Negative = Absence of CrVI coating
 Positive = Presence of CrVI coating; the detected concentration in boiling-water-extraction solution is equal or greater than 0.02 mg/kg with 50 cm² sample surface area.



Test Report No. F690501/LF-CTSAYAA11-12813

Issued Date: 2011. 04. 21 Page 1 of 3

To: SHIN POONG METAL CO., LTD
#223-408
Seoknam-dong
Seo-gu
INCHEON 404-220
Korea

The following merchandise was submitted and identified by the client as :

SGS File No. : AYAA11-12813
Product Name : Silver Cyanide
Item No./Part No. : N/A
Received Date : 2011. 04. 18
Test Period : 2011. 04. 19 to 2011. 04. 21
Test Results : For further details, please refer to following page(s)
Test Performed : SGS Korea tested the sample(s) selected by applicant with following results.

Timothy Jeon
Jinhee Kim
Cindy Park
Jerry Jung/ Testing Person

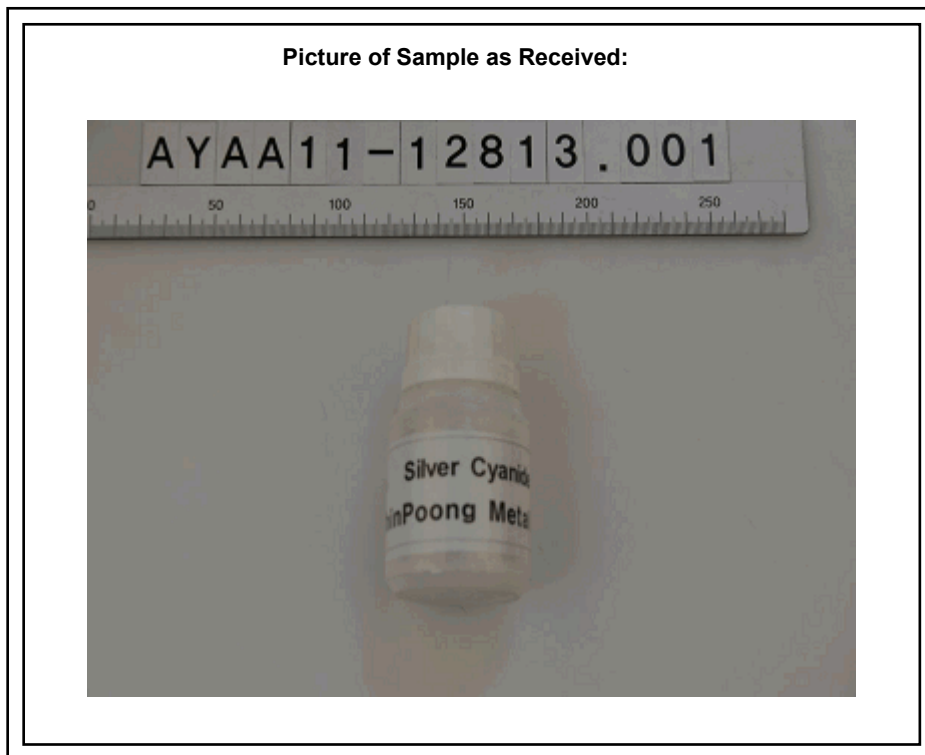
SGS Korea Co. Ltd.

Jeff Jang / Chemical Lab Mgr

Sample No. : AYAA11-12813.001
Sample Description : Silver Cyanide
Item No./Part No. : N/A
Comments : Material is Powder.

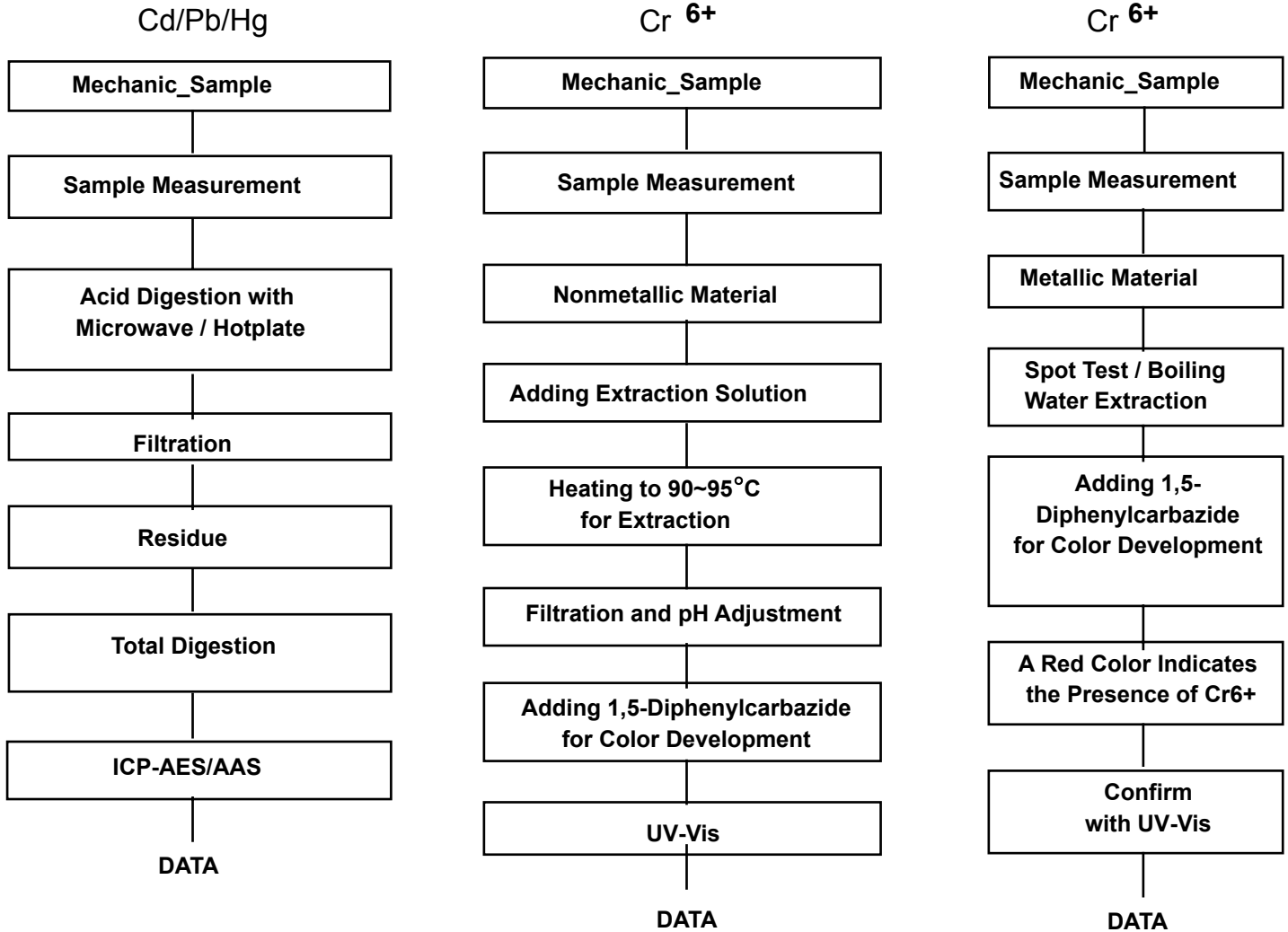
Heavy Metals

Test Items	Unit	Test Method	MDL	Results
Cadmium (Cd)	mg/kg	With reference to IEC 62321:2008, ICP	0.5	N.D.
Lead (Pb)	mg/kg	With reference to IEC 62321:2008, ICP	5	N.D.
Mercury (Hg)	mg/kg	With reference to IEC 62321:2008, ICP	2	N.D.
Hexavalent Chromium (Cr VI)	mg/kg	With reference to IEC 62321:2008, UV-VIS	1	N.D.



- NOTE:**
- (1) N.D. = Not detected.(<MDL)
 - (2) mg/kg = ppm
 - (3) MDL = Method Detection Limit
 - (4) - = No regulation
 - (5) ** = Qualitative analysis (No Unit)
 - (6) * = Boiling-water-extraction:
 Negative = Absence of CrVI coating
 Positive = Presence of CrVI coating; the detected concentration in boiling-water-extraction solution is equal or greater than 0.02 mg/kg with 50 cm2 sample surface area.

Flow Chart for RoHS: Cd/Pb/Hg/Cr⁶⁺ Testing



The samples were dissolved totally by pre-conditioning method according to above flow chart for Cd,Pb,Hg.

Section Chief : Gilsae Yi

*** End ***

- NOTE:
- (1) N.D. = Not detected.(<MDL)
 - (2) mg/kg = ppm
 - (3) MDL = Method Detection Limit
 - (4) - = No regulation
 - (5) ** = Qualitative analysis (No Unit)
 - (6) * = Boiling-water-extraction:
 Negative = Absence of CrVI coating
 Positive = Presence of CrVI coating; the detected concentration in boiling-water-extraction solution is equal or greater than 0.02 mg/kg with 50 cm² sample surface area.



Test Report No. F690501/LF-CTSAYAU10-05130

Issued Date: November 03, 2010 Page 1 of 3

To: **POONGSAN CORPORATION**
611 Daejung-ri Onsan-eup
Ulju
ULSAN
KOREA

The following merchandise was submitted and identified by the client as :

SGS File No. : AYAU10-05130
Product Name : C2680
Item No./Part No. : N/A
Received Date : Oct. 27, 2010
Test Period : Oct. 28, 2010 to Nov. 03, 2010
Test Performed : SGS Testing Korea tested the sample(s) selected by applicant with following results
Test Results : For further details, please refer to following page(s)
Conclusion : Based on the performed tests on submitted sample(s), the results **comply with the** RoHS Directive 2002/95/EC and its subsequent amendments.

SGS Testing Korea Co. Ltd. / Gimhae Laboratory

Thomas Hwang / Gimhae Lab. Mgr

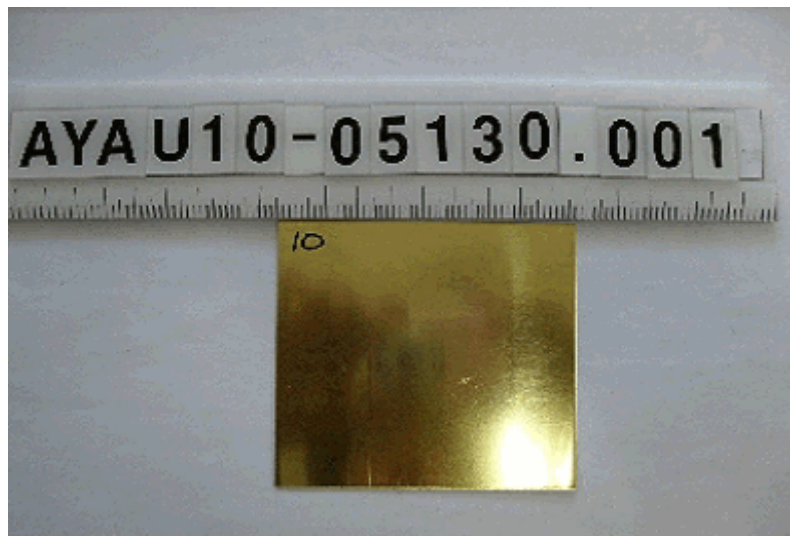
Sharpless Park
Annie Lim
Jonadan Lee /Testing Person

Sample No. : AYAU10-05130.001
 Sample Description : C2680
 Item No./Part No. : N/A

Heavy Metals

Test Items	Unit	Test Method	MDL	Results
Cadmium (Cd)	mg/kg	With reference to IEC 62321:2008, ICP	1	N.D.
Lead (Pb)	mg/kg	With reference to IEC 62321:2008, ICP	5	21.0
Mercury (Hg)	mg/kg	With reference to IEC 62321:2008, ICP	2	N.D.
Hexavalent Chromium (Cr VI) By boiling water extraction*	-	With reference to IEC 62321:2008	-	Negative

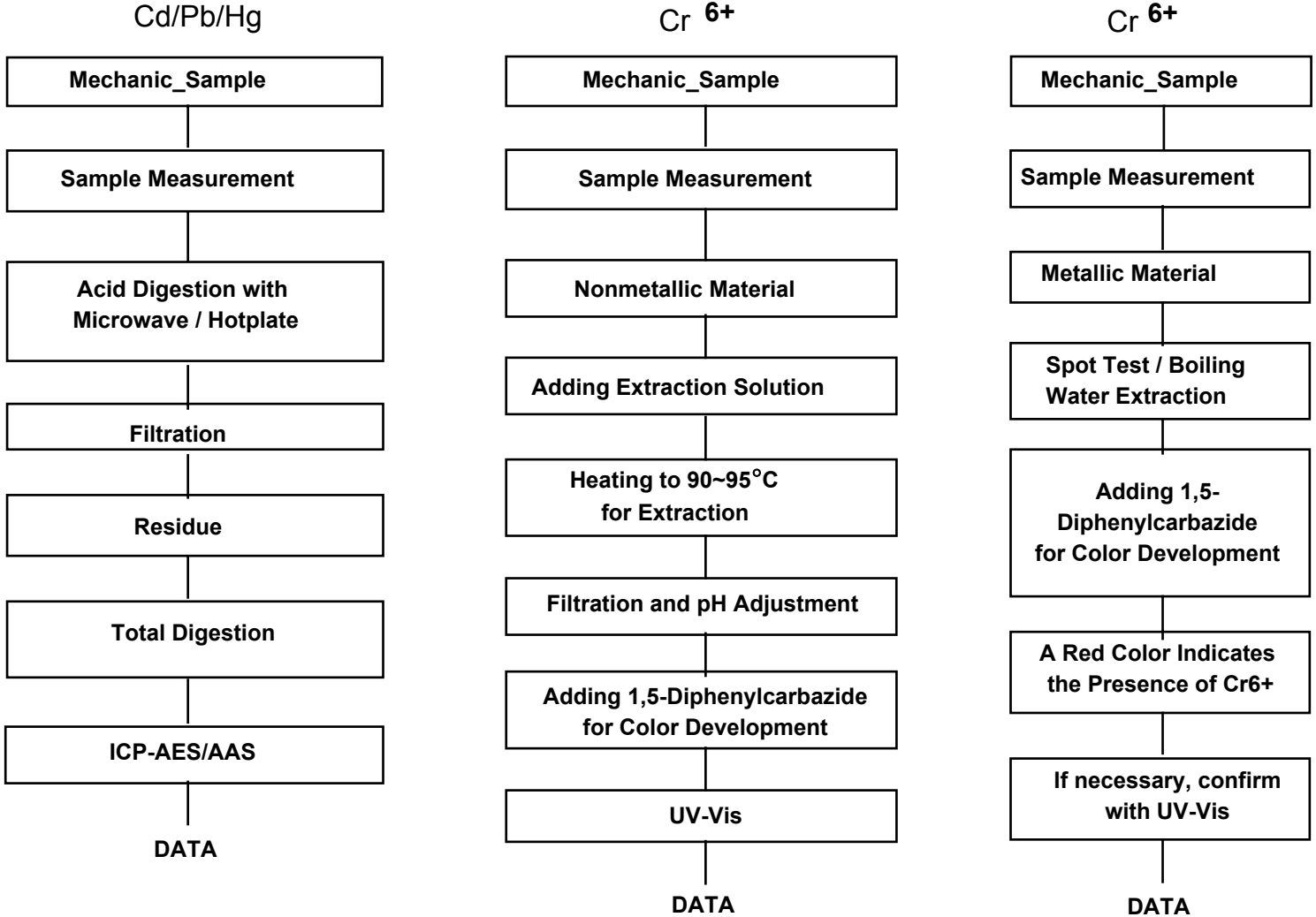
Picture of Sample as Received:



- NOTE:
- (1) N.D. = Not detected.(<MDL)
 - (2) mg/kg = ppm
 - (3) MDL = Method Detection Limit
 - (4) - = No regulation
 - (5) ** = Qualitative analysis (No Unit)
 - (6) * = Boiling-water-extraction:
 Negative = Absence of CrVI coating
 Positive = Presence of CrVI coating; the detected concentration in boiling-water-extraction solution is equal or greater than 0.02 mg/kg with 50 cm2 sample surface area.

This document is issued by the Company subject to its General Conditions of Service printed overleaf, available on request or accessible at www.sgs.com/terms_and_conditions.htm and, for electronic format documents, subject to Terms and Conditions for Electronic Documents at www.sgs.com/terms_e-document.htm. Attention is drawn to the limitation of liability, indemnification and jurisdiction issues defined therein. Any holder of this document is advised that information contained hereon reflects the Company's findings at the time of its intervention only and within the limits of Client's instructions, if any. The Company's sole responsibility is to its Client and this document does not exonerate parties to a transaction from exercising all their rights and obligations under the transaction documents. This document cannot be reproduced except in full, without prior written approval of the Company. Any unauthorized alteration, forgery or falsification of the content or appearance of this document is unlawful and offenders may be prosecuted to the fullest extent of the law.
 Unless otherwise stated the results shown in this test report refer only to the sample(s) tested and such sample(s) are retained for 180 days only.

Testing Flow Chart for RoHS: Cd/Pb/Hg/Cr⁶⁺ Testing



The samples were dissolved totally by pre-conditioning method according to above flow chart for Cd,Pb,Hg.

Section Chief : Sharpless Park

*** End ***

- NOTE:
- (1) N.D. = Not detected.(<MDL)
 - (2) mg/kg = ppm
 - (3) MDL = Method Detection Limit
 - (4) - = No regulation
 - (5) ** = Qualitative analysis (No Unit)
 - (6) * = Boiling-water-extraction:
 Negative = Absence of CrVI coating
 Positive = Presence of CrVI coating; the detected concentration in boiling-water-extraction solution is equal or greater than 0.02 mg/kg with 50 cm² sample surface area.

This document is issued by the Company subject to its General Conditions of Service printed overleaf, available on request or accessible at www.sgs.com/terms_and_conditions.htm and, for electronic format documents, subject to Terms and Conditions for Electronic Documents at www.sgs.com/terms_e-document.htm. Attention is drawn to the limitation of liability, indemnification and jurisdiction issues defined therein. Any holder of this document is advised that information contained herein reflects the Company's findings at the time of its intervention only and within the limits of Client's instructions, if any. The Company's sole responsibility is to its Client and this document does not exonerate parties to a transaction from exercising all their rights and obligations under the transaction documents. This document cannot be reproduced except in full, without prior written approval of the Company. Any unauthorized alteration, forgery or falsification of the content or appearance of this document is unlawful and offenders may be prosecuted to the fullest extent of the law. Unless otherwise stated the results shown in this test report refer only to the sample(s) tested and such sample(s) are retained for 180 days only.



Test Report No. F690501/LF-CTSAYAA11-02140

Issued Date: January 21, 2011

Page 1 of 4

To: **NEOCHEM CO., LTD.**
RM1339 Samsung Lacville
751 Janghang-dong
Ilsandong-gu, Goyang-city
GYEONGGI-DO 410-380
Korea

The following merchandise was submitted and identified by the client as :

SGS File No. : AYAA11-02140
Product Name : ZENITE 6130L WT
Item No./Part No. : N/A
Received Date : Jan. 18, 2011
Test Period : Jan. 19, 2011 to Jan. 21, 2011
Test Performed : SGS Testing Korea tested the sample(s) selected by applicant with following results
Test Results : For further details, please refer to following page(s)
Buyer(s) : SAMSUNG, LG

SGS Testing Korea Co. Ltd.

Jeff Jang / Chemical Lab Mgr

Timothy Jeon
Jinhee Kim
Cindy Park
Jerry Jung/ Testing Person

This document is issued by the Company subject to its General Conditions of Service printed overleaf, available on request or accessible at www.sgs.com/terms_and_conditions.htm and, for electronic format documents, subject to Terms and Conditions for Electronic Documents at www.sgs.com/terms_e-document.htm. Attention is drawn to the limitation of liability, indemnification and jurisdiction issues defined therein. Any holder of this document is advised that information contained hereon reflects the Company's findings at the time of its intervention only and within the limits of Client's instructions, if any. The Company's sole responsibility is to its Client and this document does not exonerate parties to a transaction from exercising all their rights and obligations under the transaction documents. This document cannot be reproduced except in full, without prior written approval of the Company. Any unauthorized alteration, forgery or falsification of the content or appearance of this document is unlawful and offenders may be prosecuted to the fullest extent of the law. Unless otherwise stated the results shown in this test report refer only to the sample(s) tested and such sample(s) are retained for 180 days only.



Test Report No. F690501/LF-CTSAYAA11-02140

Issued Date: January 21, 2011

Page 2 of 4

Sample No. : AYAA11-02140.001
Sample Description : ZENITE 6130L WT
Item No./Part No. : N/A
Comments : Material is LCP Resin.

Heavy Metals

Test Items	Unit	Test Method	MDL	Results
Cadmium (Cd)	mg/kg	With reference to IEC 62321:2008, ICP	0.5	N.D.
Lead (Pb)	mg/kg	With reference to IEC 62321:2008, ICP	5	N.D.
Mercury (Hg)	mg/kg	With reference to IEC 62321:2008, ICP	2	N.D.
Hexavalent Chromium (Cr VI)	mg/kg	With reference to IEC 62321:2008, UV-VIS	1	N.D.

Flame Retardants-PBBs/PBDEs

Test Items	Unit	Test Method	MDL	Results
Monobromobiphenyl	mg/kg	With reference to IEC 62321:2008, GC-MS	5	N.D.
Dibromobiphenyl	mg/kg	With reference to IEC 62321:2008, GC-MS	5	N.D.
Tribromobiphenyl	mg/kg	With reference to IEC 62321:2008, GC-MS	5	N.D.
Tetrabromobiphenyl	mg/kg	With reference to IEC 62321:2008, GC-MS	5	N.D.
Pentabromobiphenyl	mg/kg	With reference to IEC 62321:2008, GC-MS	5	N.D.
Hexabromobiphenyl	mg/kg	With reference to IEC 62321:2008, GC-MS	5	N.D.
Heptabromobiphenyl	mg/kg	With reference to IEC 62321:2008, GC-MS	5	N.D.
Octabromobiphenyl	mg/kg	With reference to IEC 62321:2008, GC-MS	5	N.D.
Nonabromobiphenyl	mg/kg	With reference to IEC 62321:2008, GC-MS	5	N.D.
Decabromobiphenyl	mg/kg	With reference to IEC 62321:2008, GC-MS	5	N.D.
Monobromodiphenyl ether	mg/kg	With reference to IEC 62321:2008, GC-MS	5	N.D.
Dibromodiphenyl ether	mg/kg	With reference to IEC 62321:2008, GC-MS	5	N.D.
Tribromodiphenyl ether	mg/kg	With reference to IEC 62321:2008, GC-MS	5	N.D.
Tetrabromodiphenyl ether	mg/kg	With reference to IEC 62321:2008, GC-MS	5	N.D.
Pentabromodiphenyl ether	mg/kg	With reference to IEC 62321:2008, GC-MS	5	N.D.
Hexabromodiphenyl ether	mg/kg	With reference to IEC 62321:2008, GC-MS	5	N.D.
Heptabromodiphenyl ether	mg/kg	With reference to IEC 62321:2008, GC-MS	5	N.D.
Octabromodiphenyl ether	mg/kg	With reference to IEC 62321:2008, GC-MS	5	N.D.
Nonabromodiphenyl ether	mg/kg	With reference to IEC 62321:2008, GC-MS	5	N.D.
Decabromodiphenyl ether	mg/kg	With reference to IEC 62321:2008, GC-MS	5	N.D.

NOTE: (1) N.D. = Not detected.(<MDL)

(2) mg/kg = ppm

(3) MDL = Method Detection Limit

(4) - = No regulation

(5) ** = Qualitative analysis (No Unit)

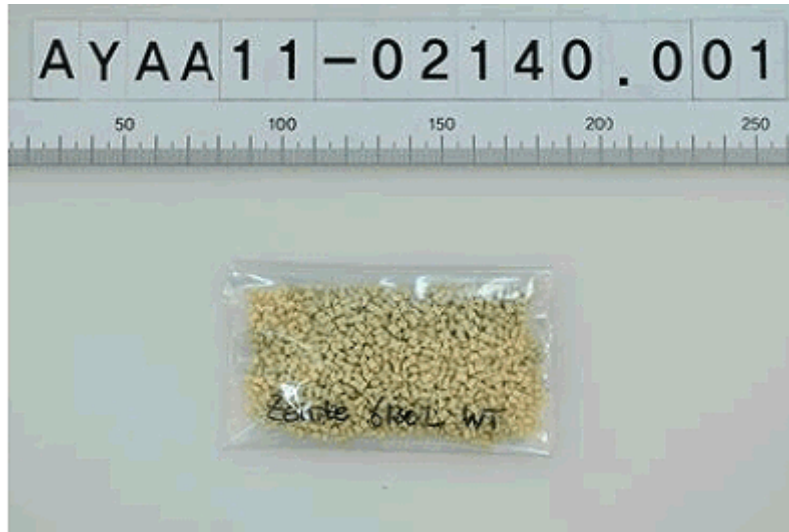
(6) * = Boiling-water-extraction:

Negative = Absence of CrVI coating

Positive = Presence of CrVI coating; the detected concentration in boiling-water-extraction solution is equal or greater than 0.02 mg/kg with 50 cm² sample surface area.

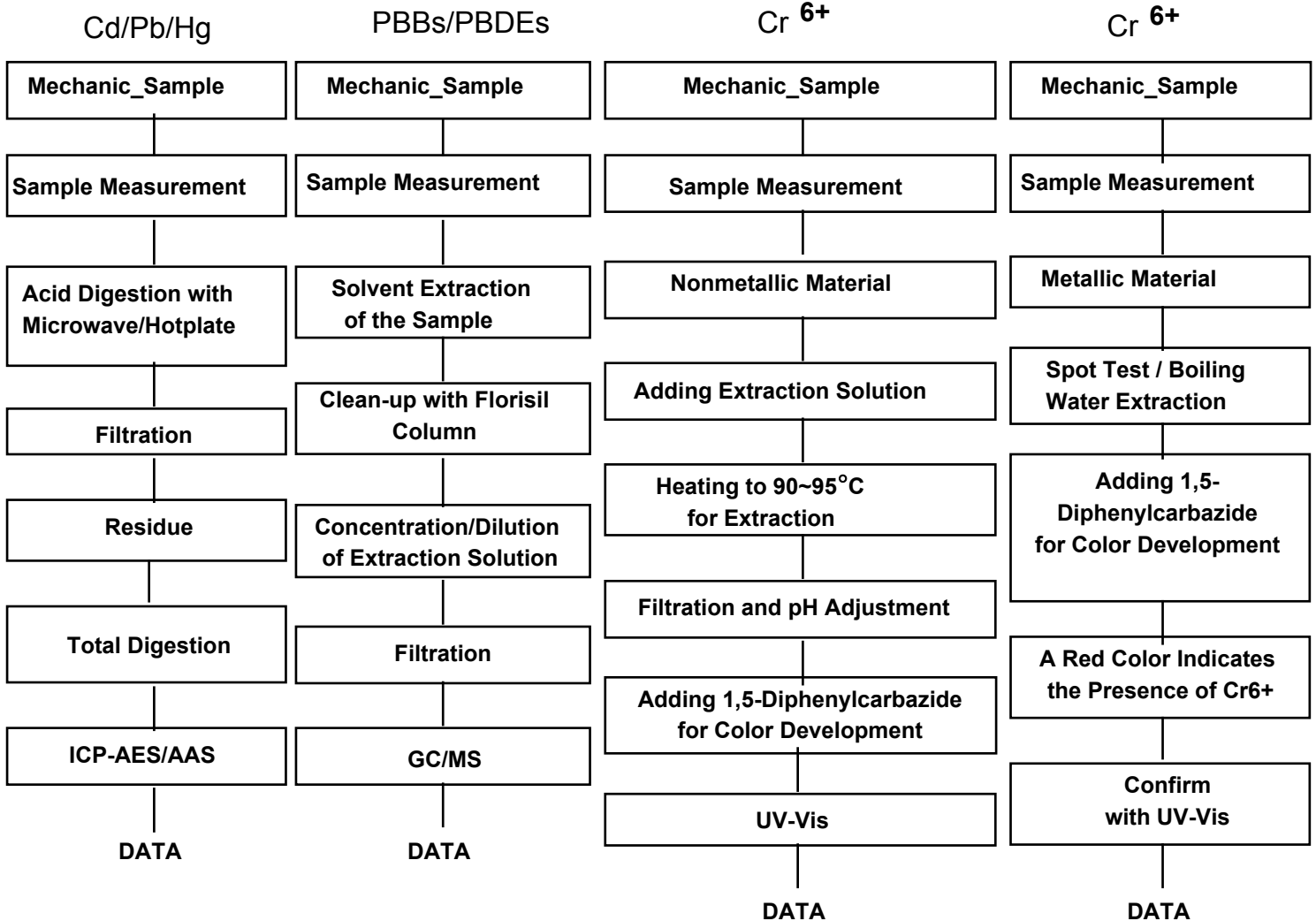
This document is issued by the Company subject to its General Conditions of Service printed overleaf, available on request or accessible at www.sgs.com/terms_and_conditions.htm and, for electronic format documents, subject to Terms and Conditions for Electronic Documents at www.sgs.com/terms_e-document.htm. Attention is drawn to the limitation of liability, indemnification and jurisdiction issues defined therein. Any holder of this document is advised that information contained hereon reflects the Company's findings at the time of its intervention only and within the limits of Client's instructions, if any. The Company's sole responsibility is to its Client and this document does not exonerate parties to a transaction from exercising all their rights and obligations under the transaction documents. This document cannot be reproduced except in full, without prior written approval of the Company. Any unauthorized alteration, forgery or falsification of the content or appearance of this document is unlawful and offenders may be prosecuted to the fullest extent of the law. Unless otherwise stated the results shown in this test report refer only to the sample(s) tested and such sample(s) are retained for 180 days only.

Picture of Sample as Received:



- NOTE:
- (1) N.D. = Not detected.(<MDL)
 - (2) mg/kg = ppm
 - (3) MDL = Method Detection Limit
 - (4) - = No regulation
 - (5) ** = Qualitative analysis (No Unit)
 - (6) * = Boiling-water-extraction:
 Negative = Absence of CrVI coating
 Positive = Presence of CrVI coating; the detected concentration in boiling-water-extraction solution is equal or greater than 0.02 mg/kg with 50 cm² sample surface area.

Testing Flow Chart for RoHS: Cd/Pb/Hg/Cr⁶⁺/PBBs&PBDEs Testing



The samples were dissolved totally by pre-conditioning method according to above flow chart for Cd,Pb,Hg.

Section Chief : Gilsae Yi

*** End ***

- NOTE:
- (1) N.D. = Not detected.(<MDL)
 - (2) mg/kg = ppm
 - (3) MDL = Method Detection Limit
 - (4) - = No regulation
 - (5) ** = Qualitative analysis (No Unit)
 - (6) * = Boiling-water-extraction:
 Negative = Absence of CrVI coating
 Positive = Presence of CrVI coating; the detected concentration in boiling-water-extraction solution is equal or greater than 0.02 mg/kg with 50 cm² sample surface area.

This document is issued by the Company subject to its General Conditions of Service printed overleaf, available on request or accessible at www.sgs.com/terms_and_conditions.htm and, for electronic format documents, subject to Terms and Conditions for Electronic Documents at www.sgs.com/terms_e-document.htm. Attention is drawn to the limitation of liability, indemnification and jurisdiction issues defined therein. Any holder of this document is advised that information contained hereon reflects the Company's findings at the time of its intervention only and within the limits of Client's instructions, if any. The Company's sole responsibility is to its Client and this document does not exonerate parties to a transaction from exercising all their rights and obligations under the transaction documents. This document cannot be reproduced except in full, without prior written approval of the Company. Any unauthorized alteration, forgery or falsification of the content or appearance of this document is unlawful and offenders may be prosecuted to the fullest extent of the law. Unless otherwise stated the results shown in this test report refer only to the sample(s) tested and such sample(s) are retained for 180 days only.