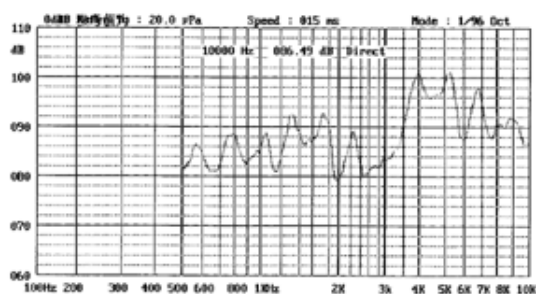
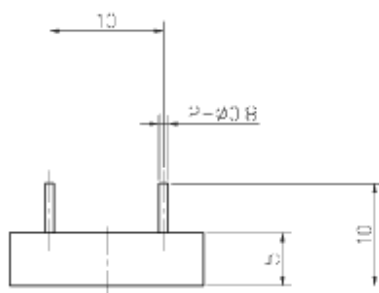
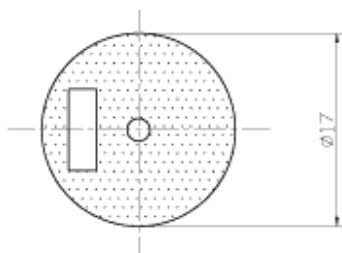


## Pin type, External-drive KPT-G1740



Product ID	KPT-G1740
application:Telephone	
Rated Voltage	12Vp-p Square Wave
Max.Allowable Voltage	30Vp-p Square Wave
Max.Rated Current	2mA at 4.0KHz/12Vp-p Square Wave
Min.Sound Pressure Level	80dB at 4.0KHz/12Vp-p Square Wave/10cm
Capacitance at 120Hz	12nF±30%
Resonant Frequency	4.0±0.5KHz
Operating Temperature	-20~+70°C
D(mm)	Ø17
H(mm)	4
Weight	2g



all dimensions are in mm

