


LA4598

Two-channel Power Amplifier for Radio Cassette Players (No Heat Sink Needed during 9 V Operation)

Overview

The LA4598 is a two-channel power IC that is intended for use in portable audio equipment. Needing no heat sink during 9 V operation facilitates set design with a small footprint.

Functions

- Thermal shutdown protector built in.
- Standby switch built in.

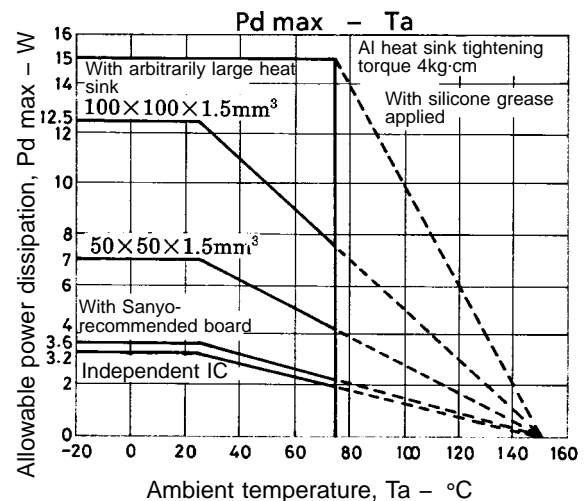
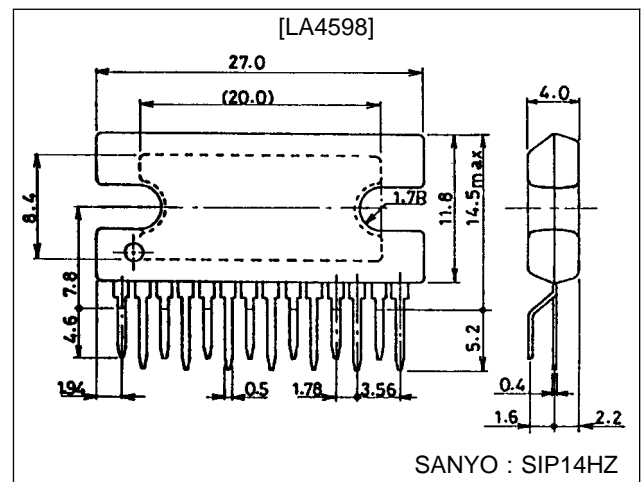
Features

- No heat sink needed during 9 V operation
- $P_O = 2.9 \text{ W} \times 2$ ($V_{CC} = 9 \text{ V}$, $R_L = 3.2 \Omega$, THD = 10%).
- Less quiescent current. ($V_{CC} = 9 \text{ V}$, 20 mA, typ).
- Operating voltage range: $V_{CC \text{ op}} = 4.2$ to 16 V.

Package Dimensions

unit : mm

3113-SIP14HZ



Specifications

Maximum Ratings at $T_a = 25^\circ\text{C}$

| Parameter | Symbol | Conditions | Ratings | Unit |
|-----------------------------|----------------------|--------------|-------------|------------------|
| Maximum supply voltage | $V_{CC \text{ max}}$ | | 18 | V |
| Allowable power dissipation | $P_d \text{ max}^*$ | No heat sink | 3.6 | W |
| Junction temperature | $T_j \text{ max}$ | | +150 | $^\circ\text{C}$ |
| Operating temperature | T_{opr} | | -20 to +75 | $^\circ\text{C}$ |
| Storage temperature | T_{stg} | | -40 to +150 | $^\circ\text{C}$ |

* With Sanyo-recommended board (9.0 cm \times 8.5 cm \times 1.5 mm (thickness))

SANYO Electric Co., Ltd. Semiconductor Business Headquarters

TOKYO OFFICE Tokyo Bldg., 1-10, 1 Chome, Ueno, Taito-ku, TOKYO, 110 JAPAN

D3095HA/N1792TS(II) No.4087-1/9

LA4598

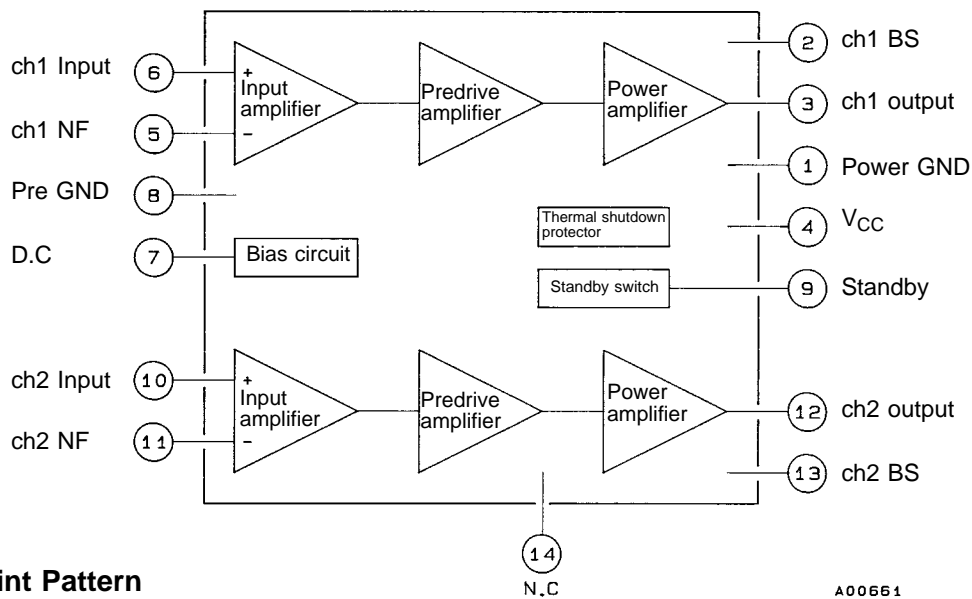
Operating Conditions at $T_a = 25\text{ }^\circ\text{C}$

| Parameter | Symbol | Conditions | Ratings | Unit |
|-----------------------------|--------------------|------------|-------------|----------|
| Recommended supply voltage | V_{CC} | | 9 | V |
| Recommended load resistance | R_L | | 3.2 | Ω |
| Operating voltage range | $V_{CC\text{ op}}$ | | 4.2 to 16.0 | V |

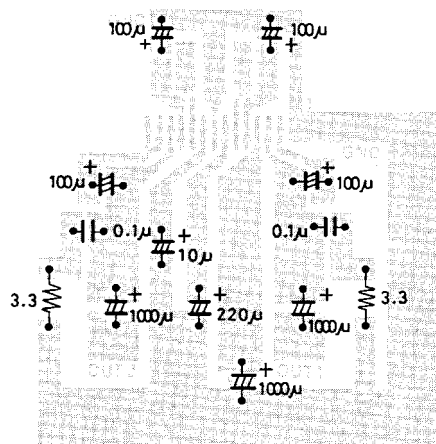
Operating Characteristics at $T_a = 25\text{ }^\circ\text{C}$, $V_{CC} = 9\text{ V}$, $f = 1\text{ kHz}$, $R_g = 600\text{ }\Omega$, $R_L = 3.2\text{ }\Omega$

| Parameter | Symbol | Conditions | min | typ | max | unit |
|---------------------------|-----------|---|-----|-----|-----|---------------|
| Quiescent current | I_{CCO} | | 10 | 20 | 40 | mA |
| Voltage gain | VG | | 47 | 49 | 51 | dB |
| Output power | P_{O1} | THD = 10% | 2.2 | 2.9 | | W |
| | P_{O2} | THD = 10%, $R_L = 4\text{ }\Omega$ | | 2.3 | | W |
| Total harmonic distortion | THD | $V_O = 2\text{ V}$ | | 0.3 | 1.0 | % |
| Input resistance | r_i | | 20 | 30 | | $k\Omega$ |
| Output noise voltage | V_{NO1} | $R_g = 0$, B.P.F = 20 Hz to 20 kHz | | 0.4 | 1.0 | mV |
| | V_{NO2} | $R_g = 10\text{ k}\Omega$, B.P.F = 20 Hz to 20 kHz | | 0.6 | 2.0 | mV |
| Ripple rejection ratio | Rr | $R_g = 0$, $f_r = 100\text{ Hz}$, $V_{CCr} = 150\text{ mV}$ | 40 | 50 | | dB |
| Channel separation | CH Sep | $R_g = 10\text{ k}\Omega$, $V_O = 0\text{ dB}$ | 45 | 55 | | dB |
| Standby current | I_{sd} | | | | 10 | μA |

Block Diagram



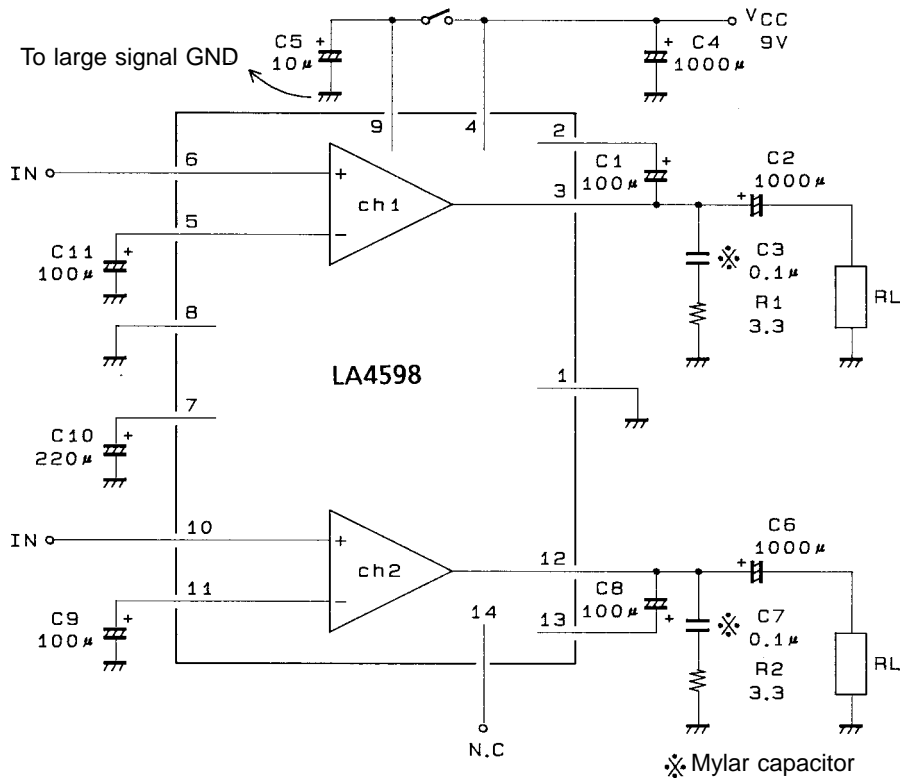
Sample Print Pattern



Unit (resistance: Ω , capacitance: F)

Copper-foiled side $85 \times 90\text{ mm}^2$

Sample Application Circuit



Unit (resistance:Ω, capacitance:F)

※ : Mylar capacitor

C + R can be added to the negative side of the output capacitor.

However, this is true only for a Sanyo-recommended board; for a set board, artwork must also be considered.

Description of External Components

C₁, C₈: Bootstrap capacitors

These capacitors affect low-region output; if the capacitor value is reduced, the low-region output decreases. Therefore, 47 µF or more is desirable.

C₂, C₆: Output capacitors

If the capacitor value is reduced, low-region roll-off frequency f_L and low-region P_o worsen.

C₃, C₇: Oscillation blocking capacitors

Mylar capacitor, which is excellent in temperature characteristics and frequency characteristics is used.

C₄: Power supply capacitor

The capacitor values depends on the power supply line loads (motor, and the like.) and transformer ripple component. 1000 µF to 2200 µF is recommended.

C₅: Standby capacitor

Pop noise reduction capacitor

C₉, C₁₁: Feedback capacitors

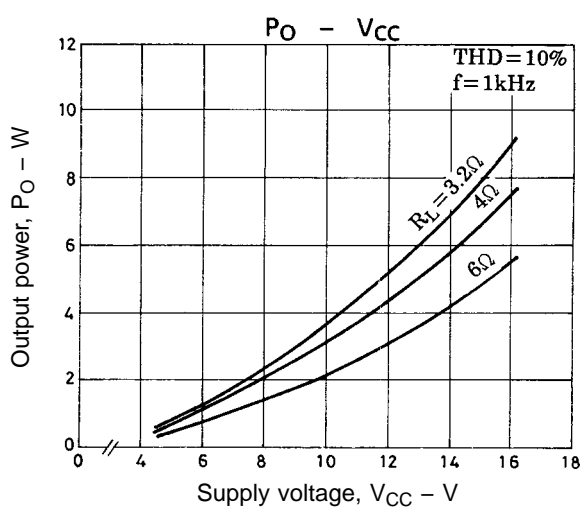
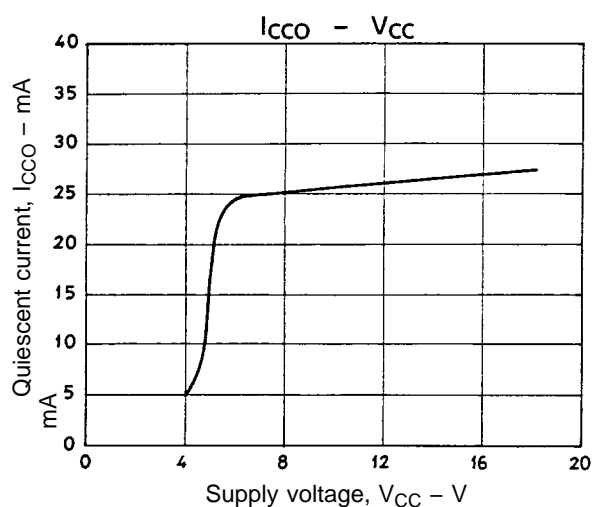
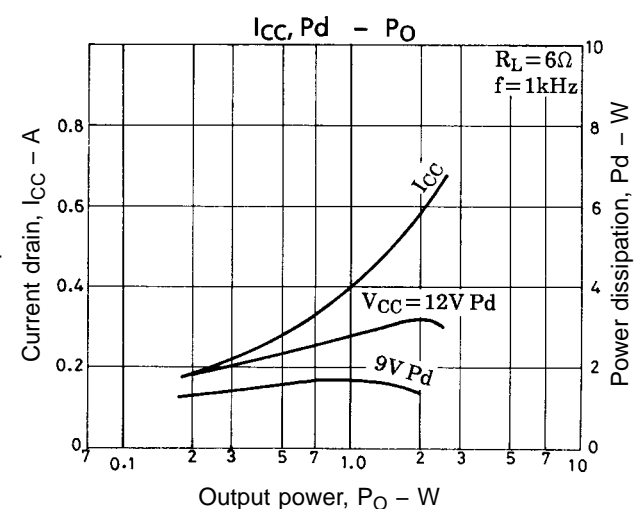
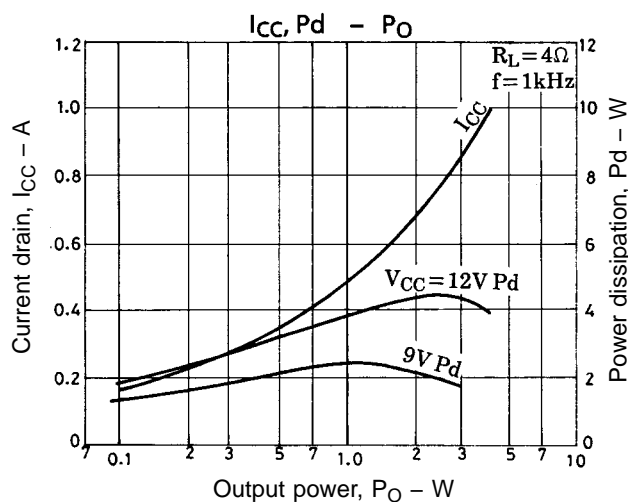
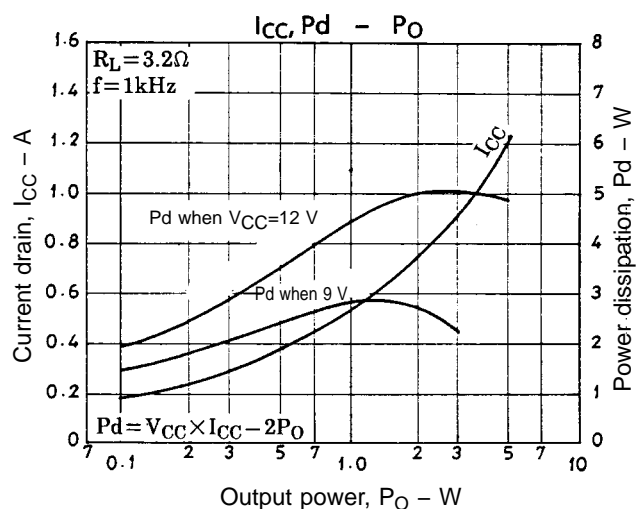
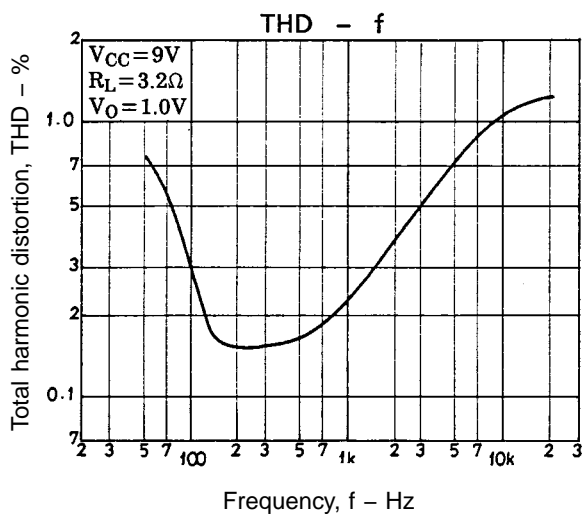
In addition to affecting low-region roll-off frequency f_L , if the capacitor value is increased, the start-up time is extended.

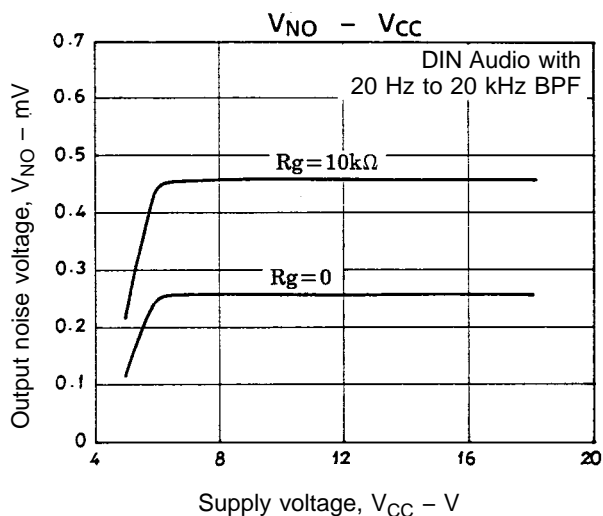
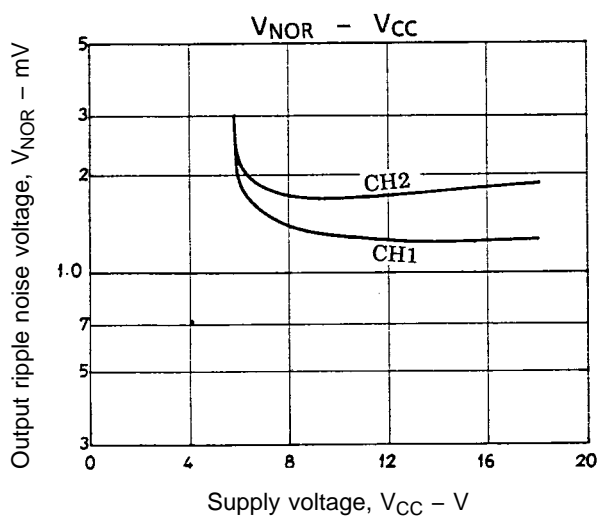
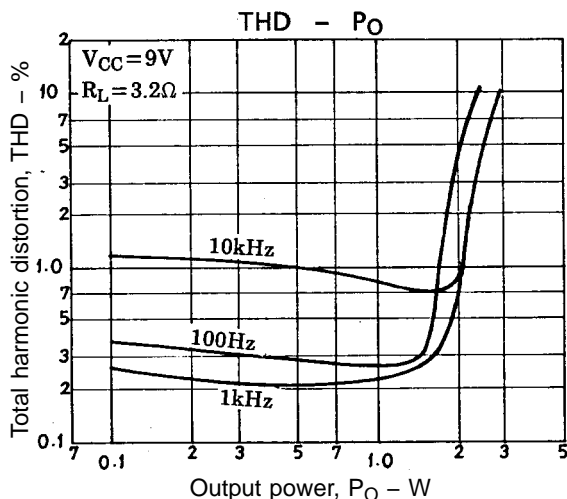
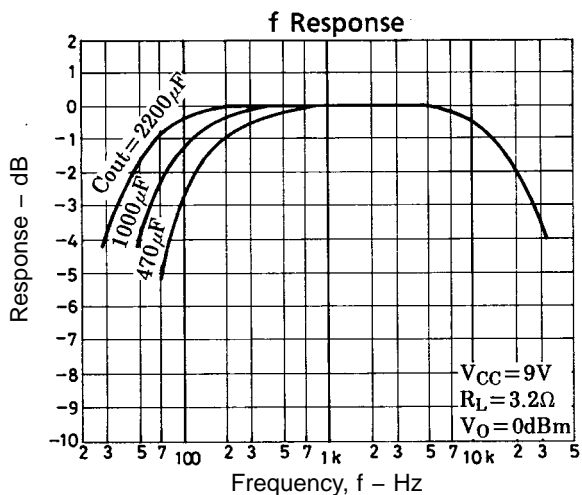
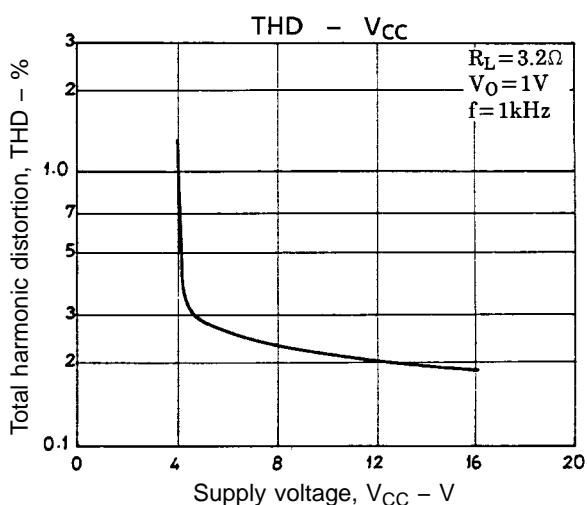
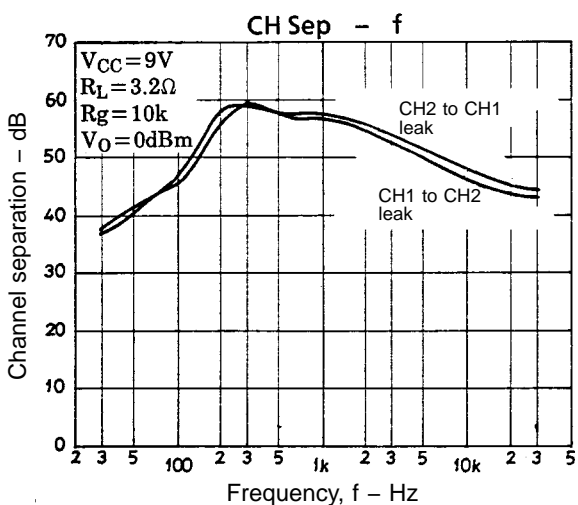
C₁₀: Decoupling capacitor

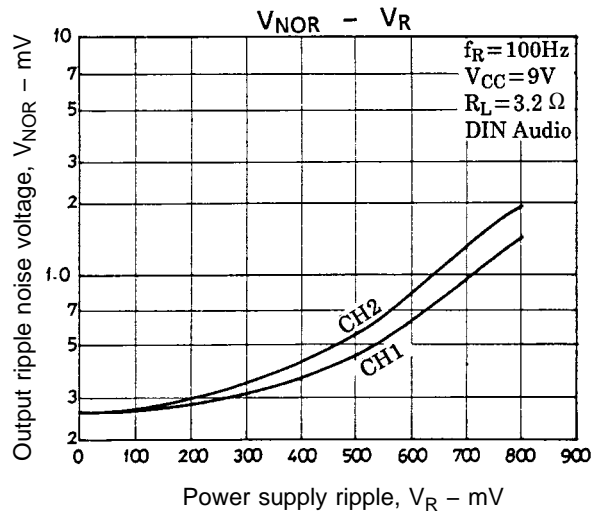
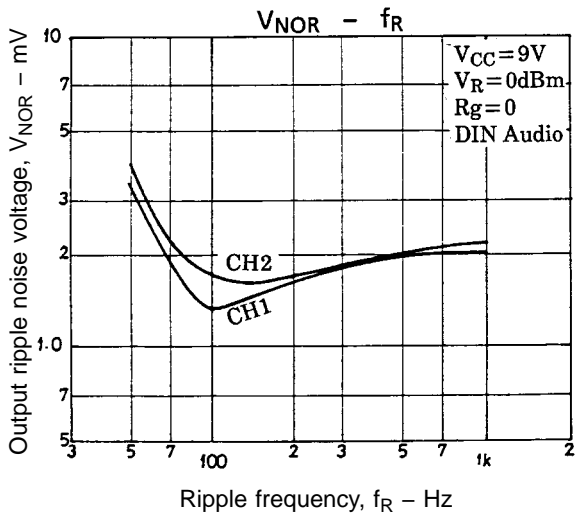
This capacitor absorbs power supply ripples; 220 µF is recommended.

R₁, R₂: Oscillation blocking resistors

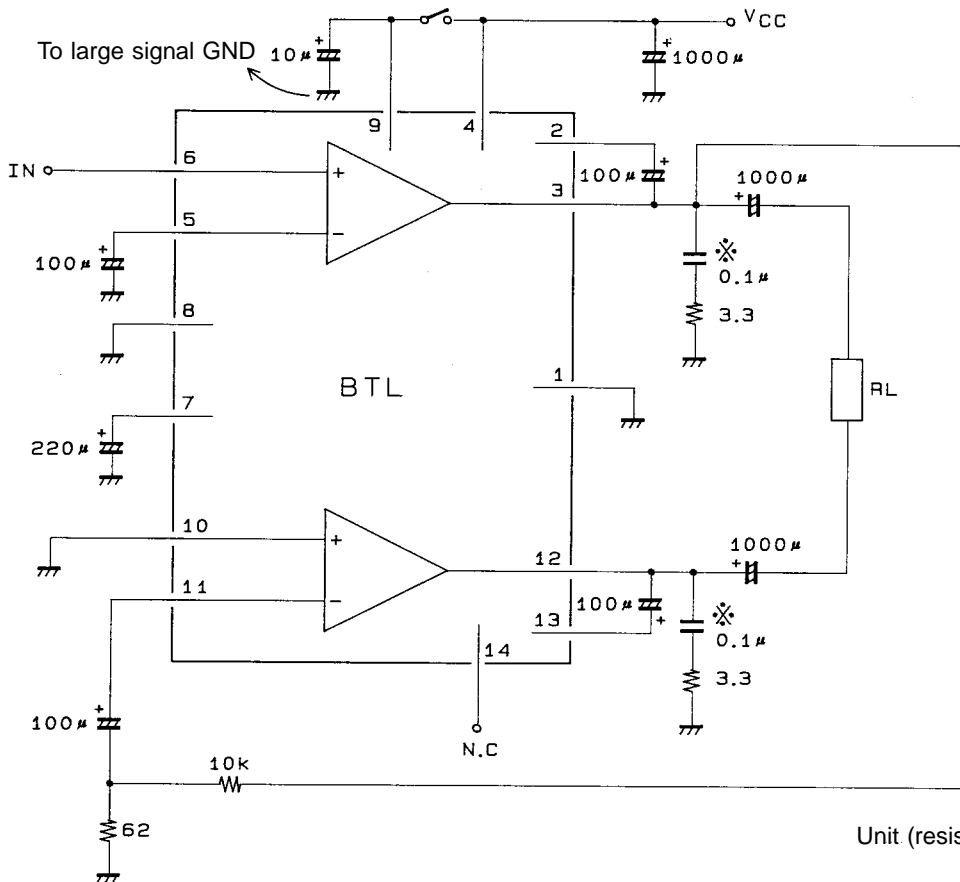
The resistor value may be varied 3.3 Ω to 1.0 Ω.







BTL Sample Application Circuit

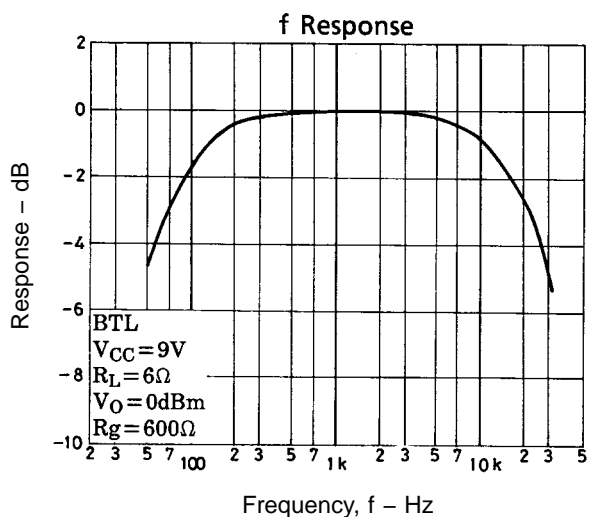
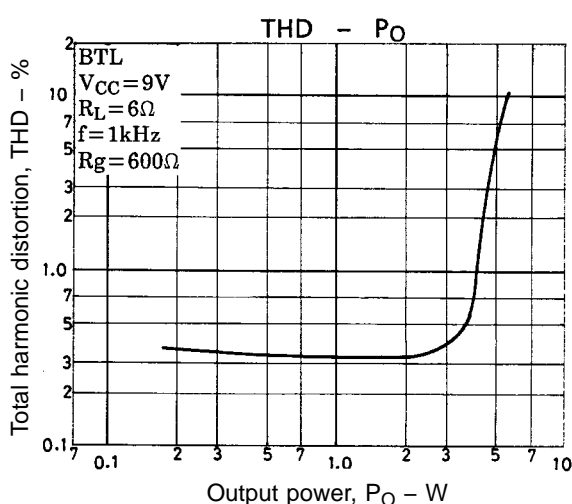
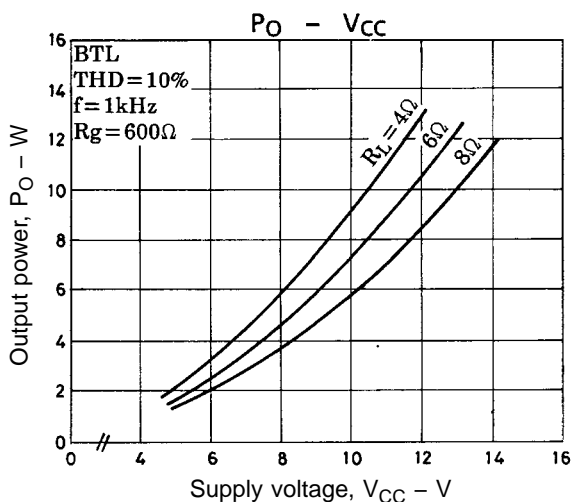
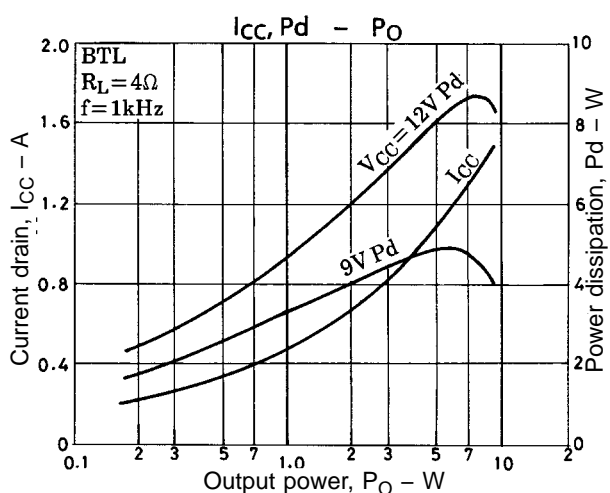
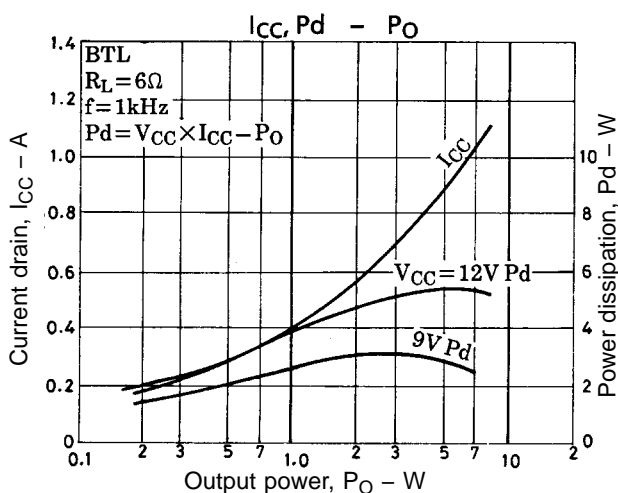


※ : Mylar capacitor

C + R can be added to the negative side of the output capacitor.

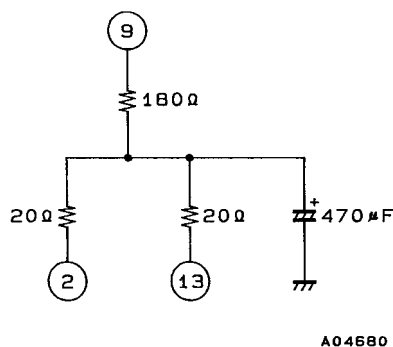
However, this is true only for a Sanyo-recommended board; for a set board, artwork must also be considered.

A00663



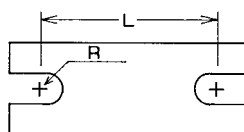
Features and Usage Notes

1. V_G can be lowered by adding an R_{NF}' to the NF pins (pins 5 and 11).
Calculated as follows:
$$V_G = 20 \log R_f / (R_{NF} + R_{NF}')$$
The IC contains $R_f = 20 \text{ k}\Omega$, $R_{NF} = 62 \Omega$.
However, the following must be noted:
 - a) If R_{NF}' is added, the ripple bypass effect due to the NF capacitor will worsen, resulting in a worsening of ripple rejection.
 - b) Oscillation stability requires, use at 40 dB or less to be avoided.
2. Pin 9 is intended for standby. It is used in conjunction with power supply pin 4. However, it should be noted that when power supply pin 9 and pin 4 are used for separate systems, the output power is affected by the pin 9 supply voltage.
3. It is recommendable to use no input capacitor. However when rubbing noise generated by the volume control is offensive to the ear, an input capacitor must be inserted.
4. Extreme caution must be exercised when the IC is used in the vicinity of the maximum ratings, since even a slight variation in conditions may cause the maximum ratings to be exceeded, thereby leading to breakdown.
5. When making the board, refer to the sample printed circuit pattern. No feedback loop must be formed between input and output. Thick and short wiring is required so that no common resistance exists between the preamplifier GND and power amplifier GND.
6. Addition of components as shown below enables use without introducing an increased distortion at V_{CC} of up to approximately 4.5 V. A capacitor of 470 μF is inserted against pop noise.



Proper Cares in Mounting a Radiator Fin

1. The tightening torque should be in a range from 4 to 6 kg.cm.
2. The spacing between the screw holes of the radiator fin must match the spacing between the screw holes of the IC. With case outline dimensions L and R referred to, the screws must be tightened with the distance between them as close to each other as possible.



3. The screws to be used must have a head equivalent to the one of truss machine screw or binder machine screw defined by JIS. Washers must also be used to protect the IC case.
4. No foreign matter such as cutting particles should exist between heat sink and radiator fin. When applying grease on the junction surface, it must be applied uniformly on the whole surface.
5. IC lead pins should be soldered to the printed circuit board after the radiator fin is mounted on the IC.

- No products described or contained herein are intended for use in surgical implants, life-support systems, aerospace equipment, nuclear power control systems, vehicles, disaster/crime-prevention equipment and the like, the failure of which may directly or indirectly cause injury, death or property loss.
- Anyone purchasing any products described or contained herein for an above-mentioned use shall:
 - ① Accept full responsibility and indemnify and defend SANYO ELECTRIC CO., LTD., its affiliates, subsidiaries and distributors and all their officers and employees, jointly and severally, against any and all claims and litigation and all damages, cost and expenses associated with such use:
 - ② Not impose any responsibility for any fault or negligence which may be cited in any such claim or litigation on SANYO ELECTRIC CO., LTD., its affiliates, subsidiaries and distributors or any of their officers and employees jointly or severally.
- Information (including circuit diagrams and circuit parameters) herein is for example only; it is not guaranteed for volume production. SANYO believes information herein is accurate and reliable, but no guarantees are made or implied regarding its use or any infringements of intellectual property rights or other rights of third parties.

This catalog provides information as of December, 1995. Specifications and information herein are subject to change without notice.