

## LMX6 LENSES FOR CREE MX6 LEDs



- Specially designed for Cree MX6 series of LEDs
- Special care taken to make a uniform white or warm white illumination. Lenses work well with other colors, too.
- Lens material optical grade PMMA. Allows use of high current and temperature conditions
- Best available optical efficiency, more than 90%, with an extremely good cutoff of light
- Fastening to PCB with TAPE

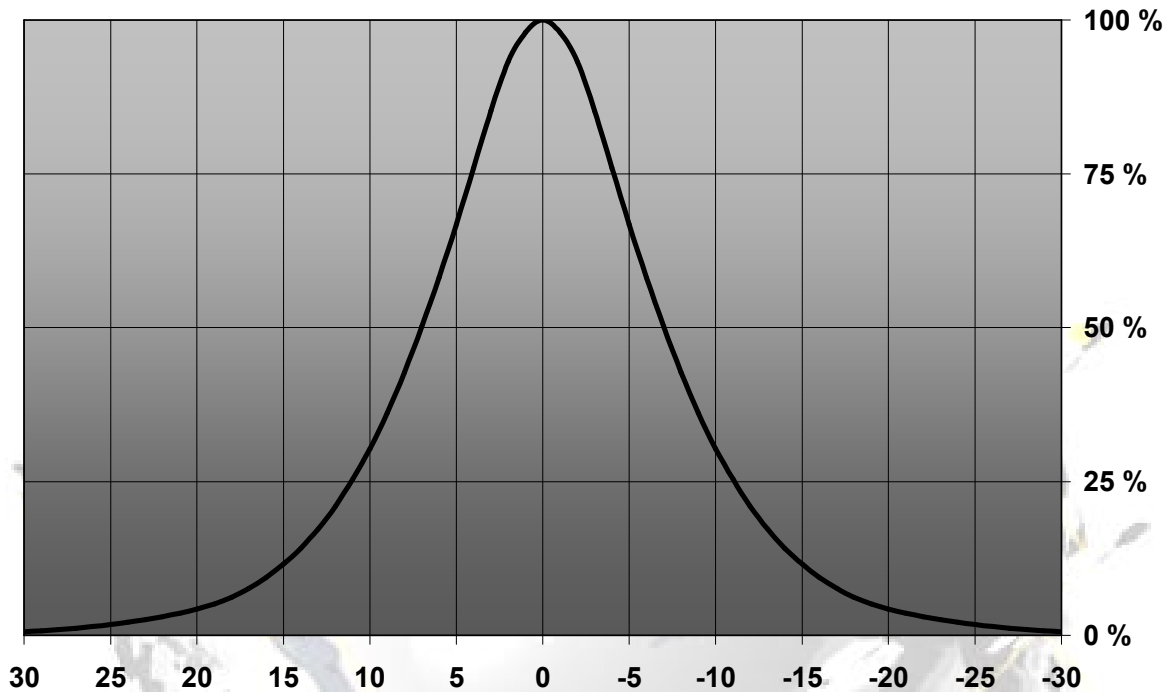
## LENS TYPES

NAME	ORDERING CODE	FWHM Angle
LMX6 REAL SPOT	FA10696_LMX6-RS	±7°
LMX6 DIFFUSER	FA10695_LMX6-D	±9°
LMX6 MEDIUM	FA10697_LMX6-M	±13°
LMX6 RECTANGULAR	FA11108_LMX6-O-90	±18.5° x ±13°
LMX6 Oval	FA10698_LMX6-Rec	±20° x ±9.5°

© Ledil Oy – PRELIMINARY - Subject to change without prior notice

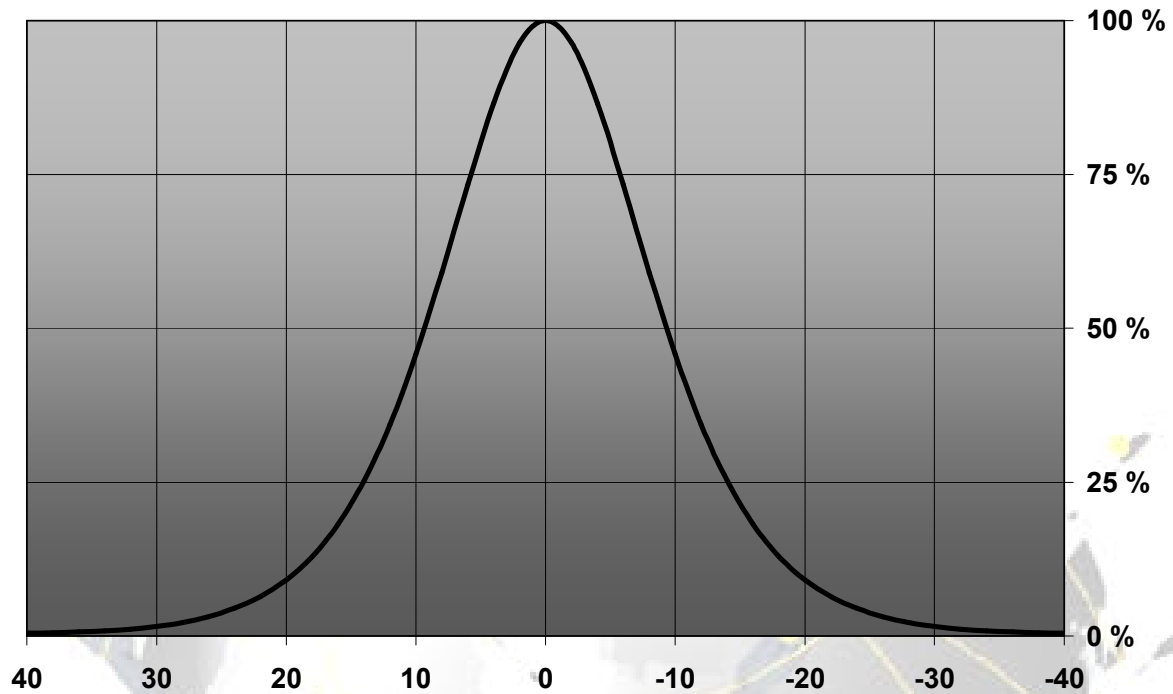
**MEASUREMENT DATA**

Relative Intensity of FA10696\_LMX6-RS



© Ledil Oy – PRELIMINARY - Subject to change without prior notice

Relative Intensity of FA10695\_LMX6-D



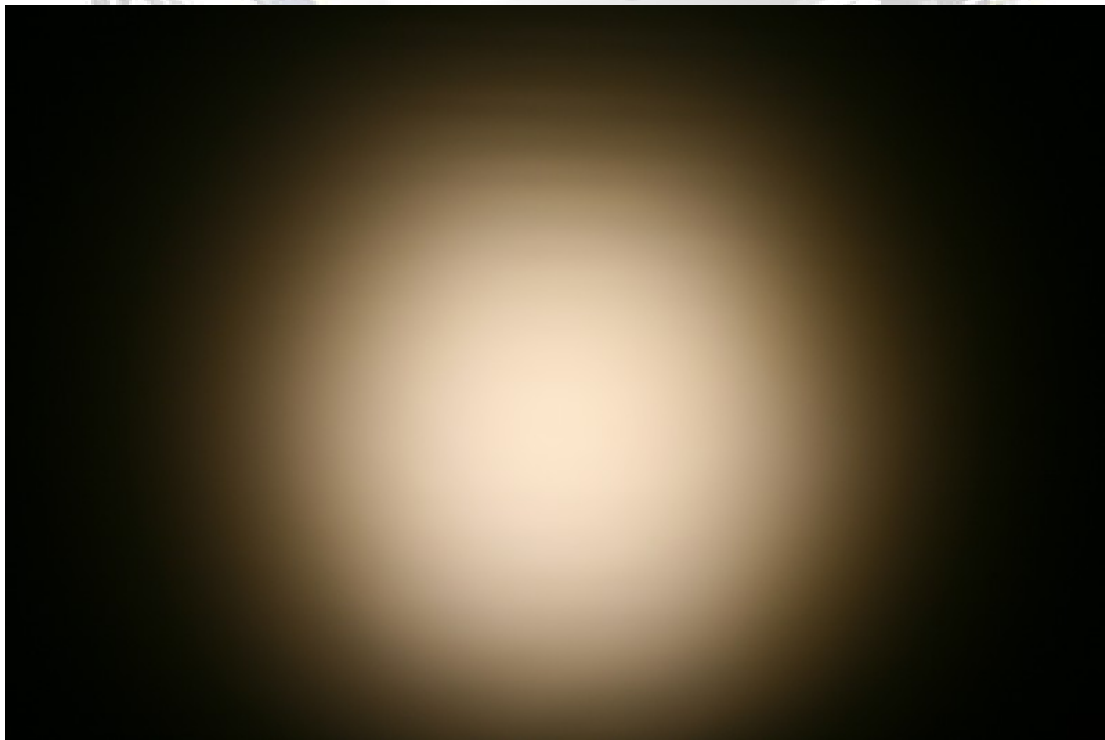
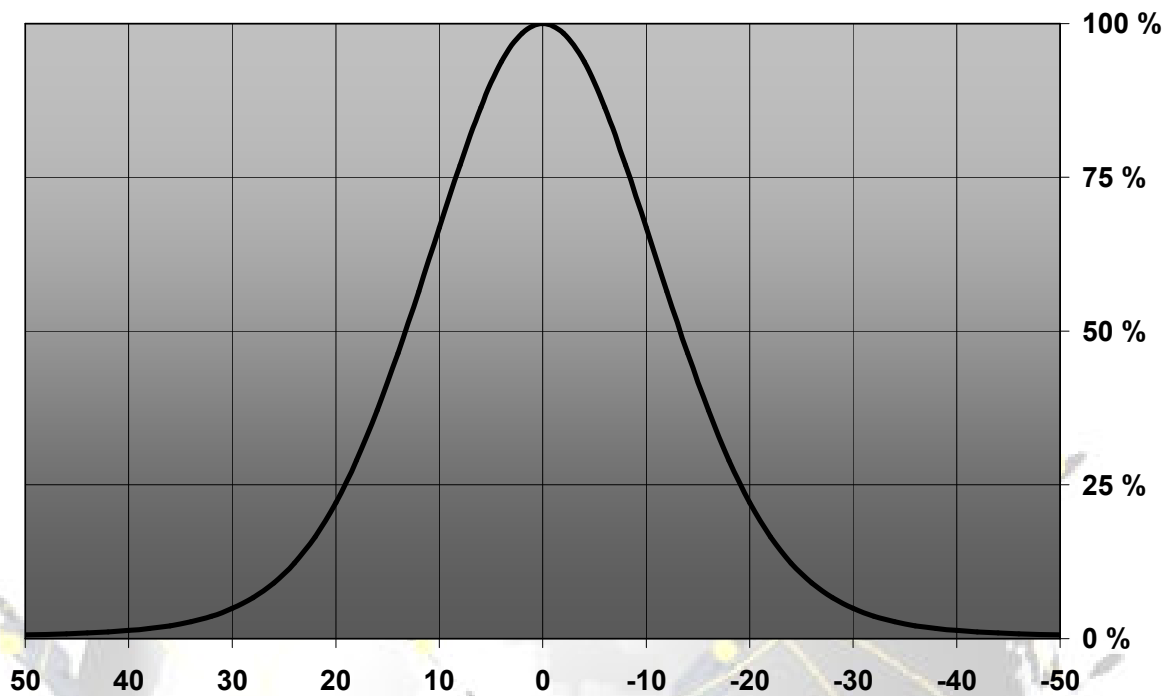
© Ledil Oy – PRELIMINARY - Subject to change without prior notice

Ledil Oy  
 Tehdaskatu 13  
 FIN-24100 SALO, Finland

[www.ledil.com](http://www.ledil.com)  
 email: [ledil@ledil.com](mailto:ledil@ledil.com)  
 FAX: +358-2-733 8001

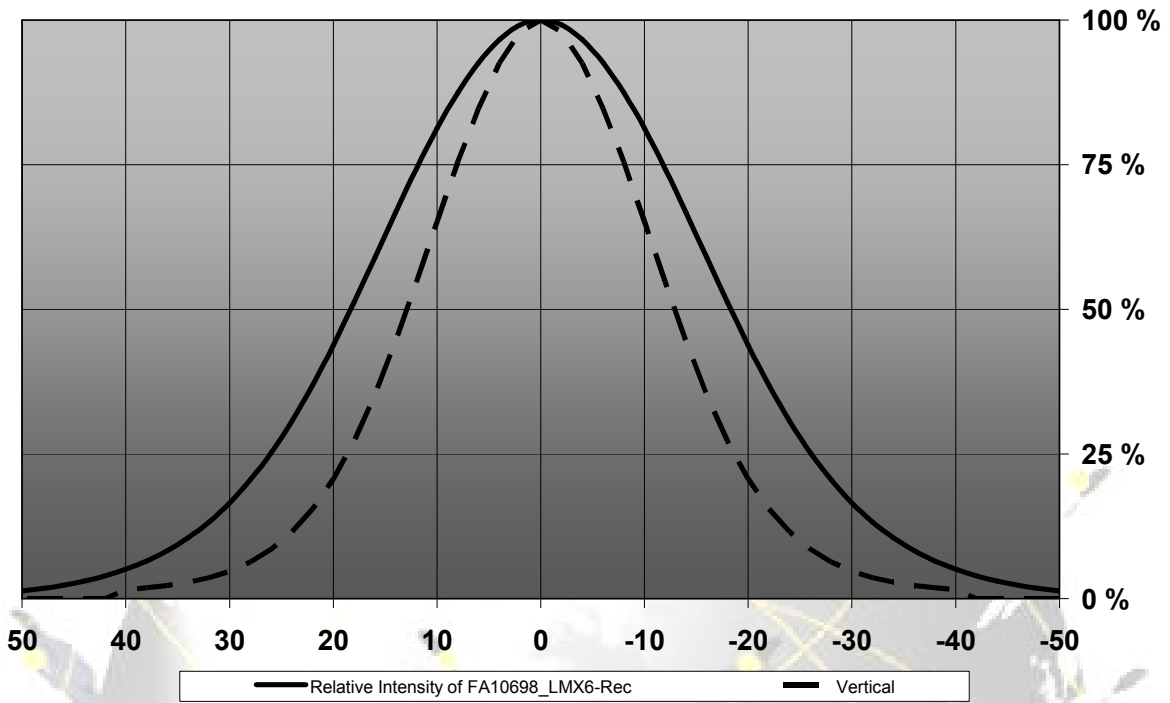
2009-11-29

Relative Intensity of FA10697\_LMX6-M



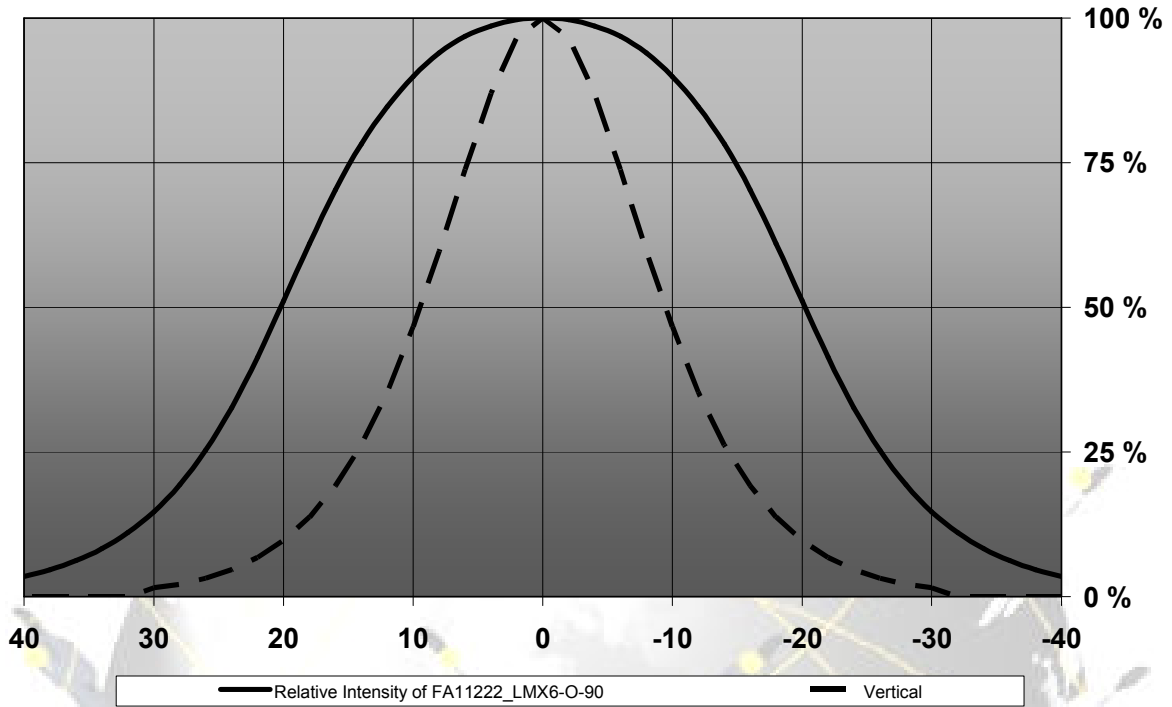
© Ledil Oy – PRELIMINARY - Subject to change without prior notice

Relative Intensity of FA10698\_LMX6-Rec



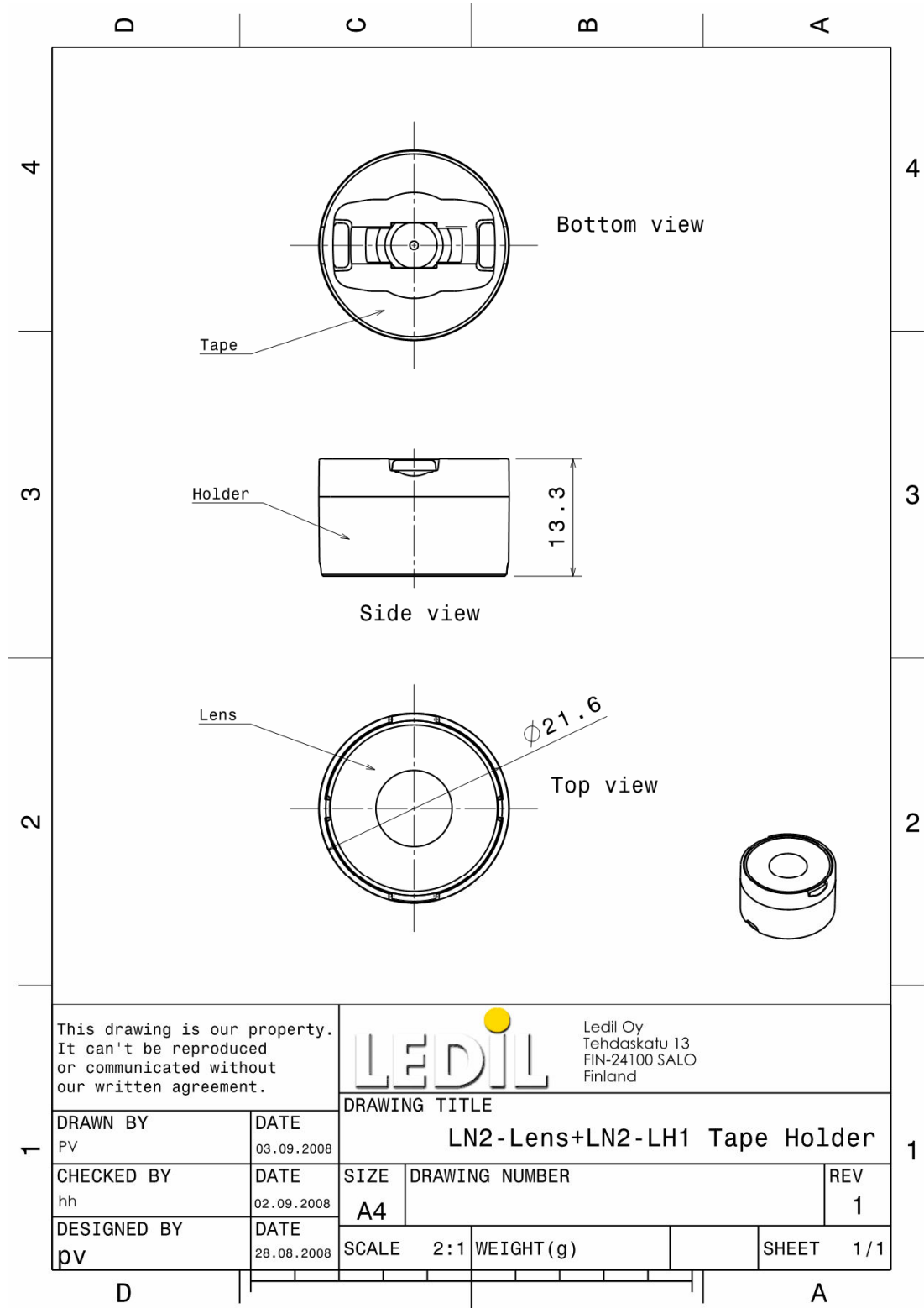
© Ledil Oy – PRELIMINARY - Subject to change without prior notice


Relative Intensity of FA11222\_LMX6-O-90



© Ledil Oy – PRELIMINARY - Subject to change without prior notice

## DRAWINGS



This drawing is our property. It can't be reproduced or communicated without our written agreement.				Ledil Oy Tehdaskatu 13 FIN-24100 SALO Finland	
DRAWING TITLE		LN2-Lens+LN2-LH1 Tape Holder			
DRAWN BY PV	DATE 03.09.2008	SIZE A4	DRAWING NUMBER	REV 1	
CHECKED BY hh	DATE 02.09.2008	SCALE 2:1	WEIGHT(g)	SHEET 1/1	
DESIGNED BY pv	DATE 28.08.2008				

© Ledil Oy – PRELIMINARY - Subject to change without prior notice