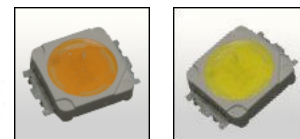


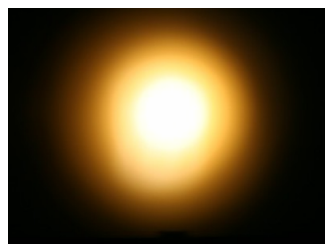
## LN2 LENSES FOR NICHIA 083 AND 183 LEDs



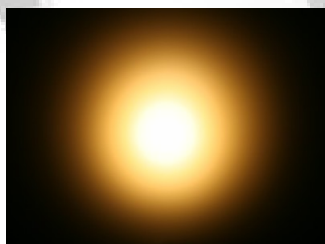
- Specially designed for Nichia NS6x083 & NS6x183 aseries of LEDs
  - Special care taken to make a uniform white or warm white illumination. Lenses work well with other colors, too.
  - Lens material optical grade PMMA. Allows use of high current and temperature conditions
  - Best available optical efficiency, more than 90%, with an extremely good cutoff of light
- Fastening to PCB with TAPE

### LENS TYPES

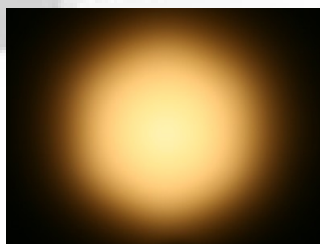
NAME	ORDERING CODE	FWHM Angle
LN2 REAL SPOT	FA10696_LN2-RS	±5.5°
LN2 DIFFUSER	FA10695_LN2-D	±7.7°
LN2 MEDIUM	FA10697_LN2-M	±13°
LN2 OVAL	FA11108_LN2-O-90	coming soon
LN2 RECTANGULAR	FA10698_LN2-REC	±19° x ±11.5°



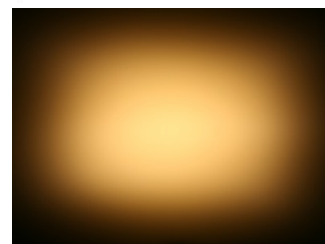
LN2 RS



LN2-D



LN2-M

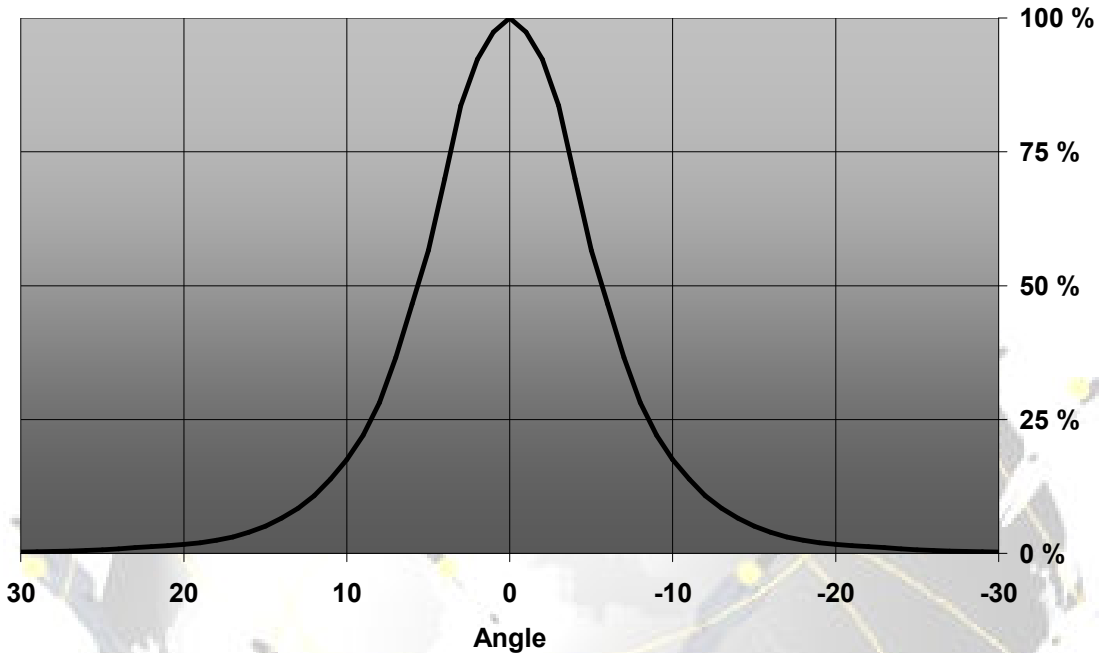


LN2-REC

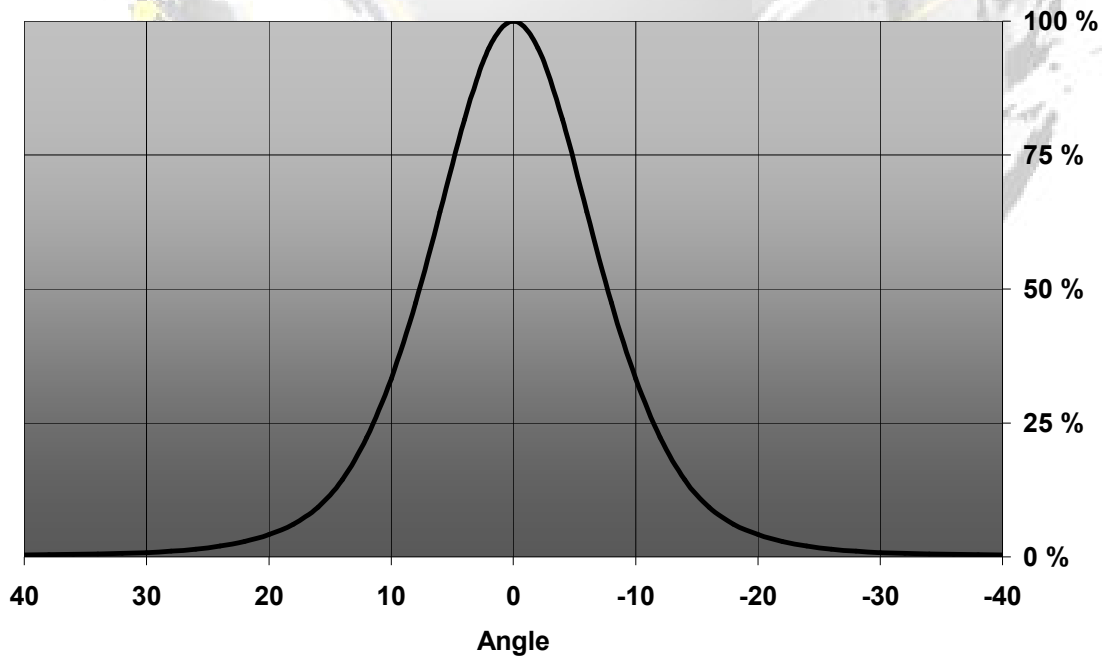
© Ledil Oy – PRELIMINARY - Subject to change without prior notice

## MEASUREMENT DATA

Relative Intensity of LN2-RS

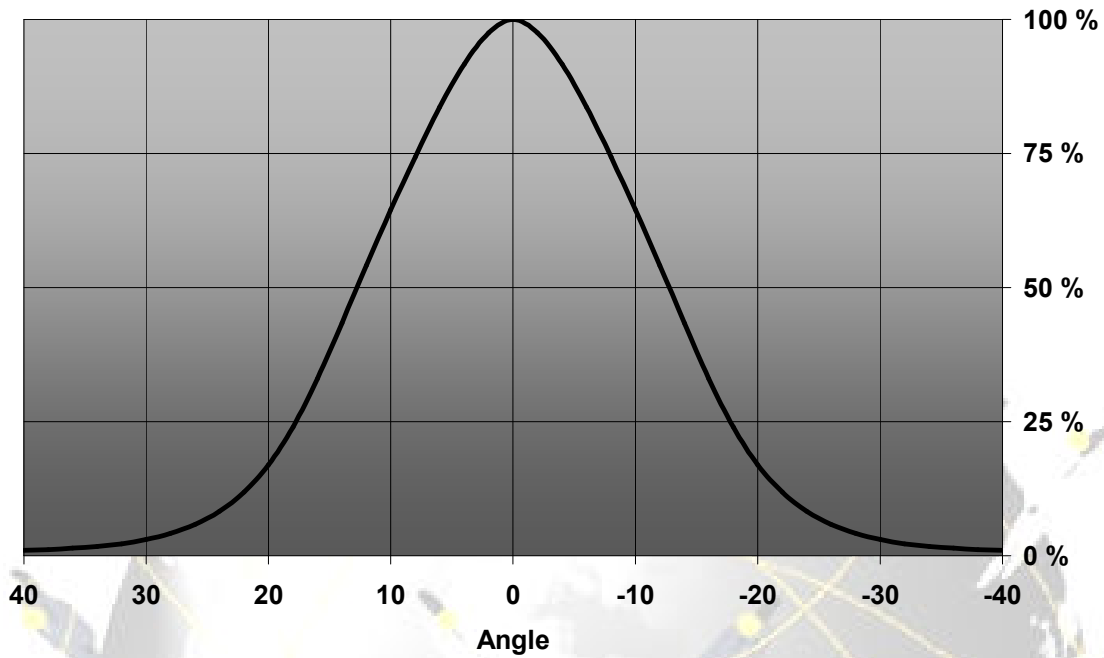


Relative Intensity of LN2-D

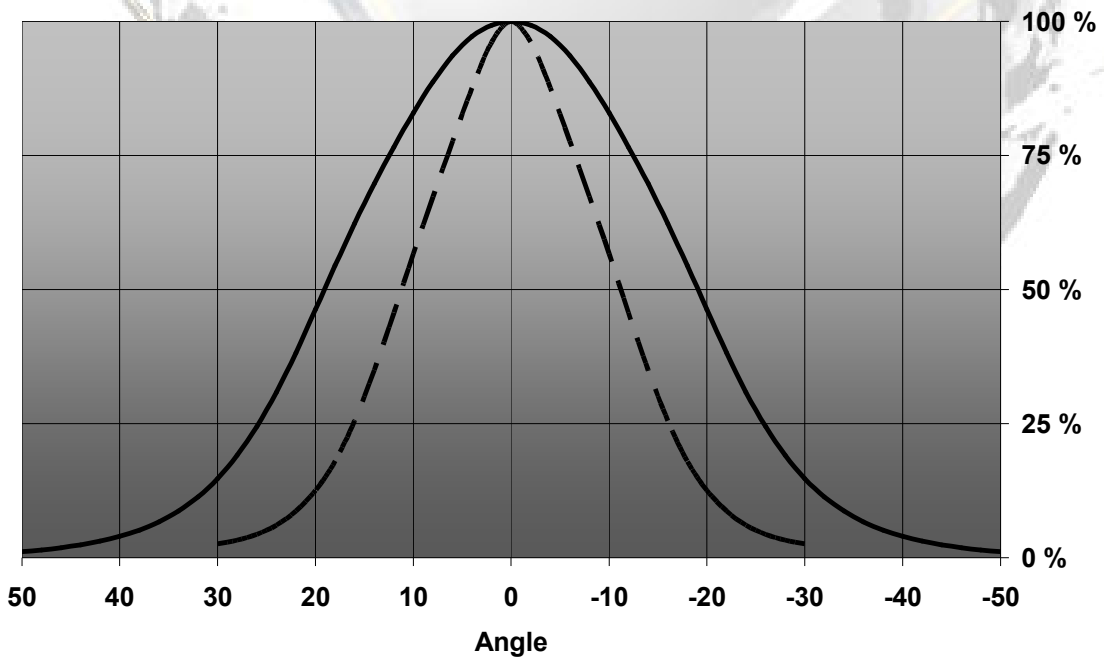


© Ledil Oy – PRELIMINARY - Subject to change without prior notice

Relative Intensity of FA10697\_LN2-M

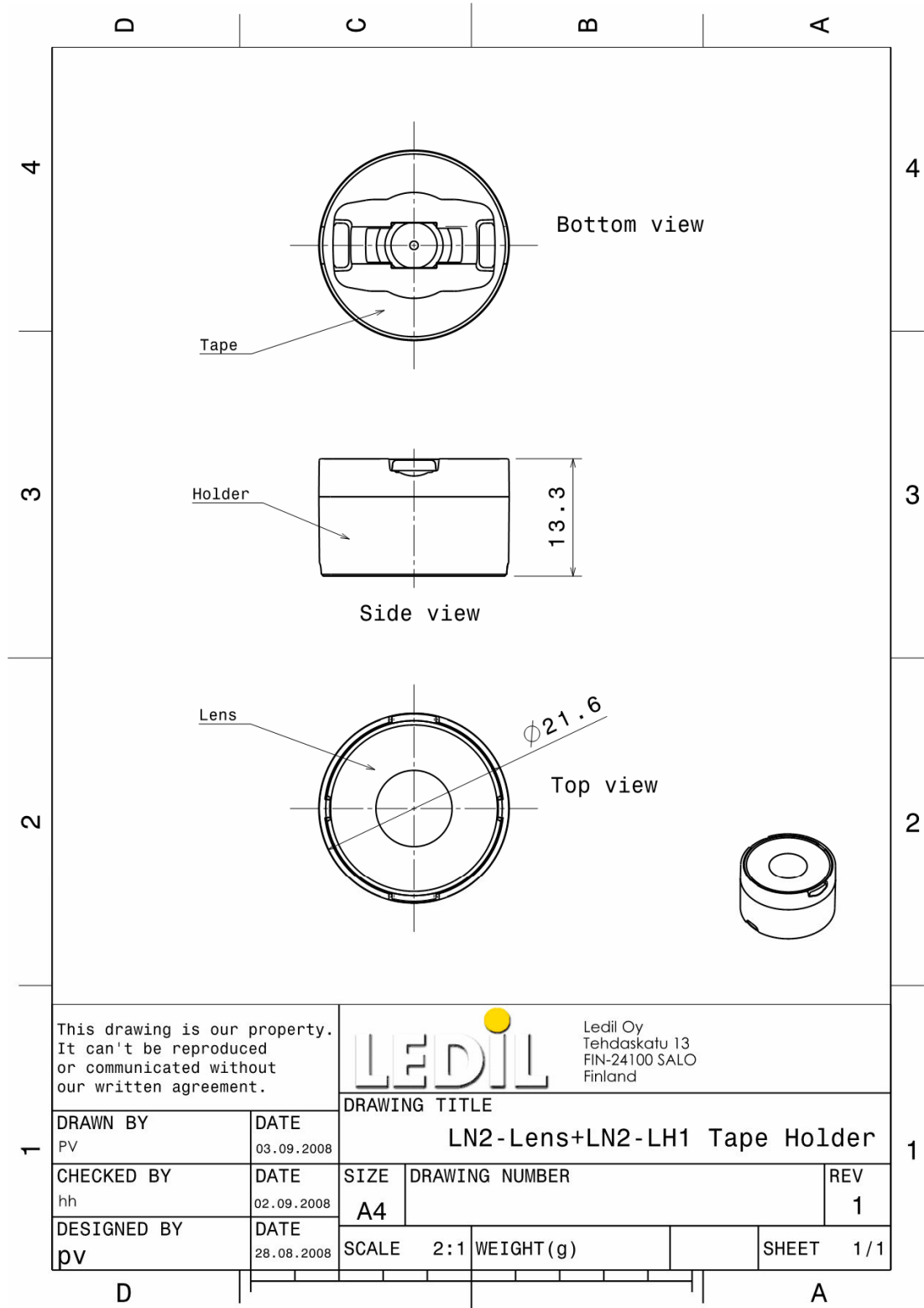


Relative Intensity of FA10698\_LN2-REC



© Ledil Oy – PRELIMINARY - Subject to change without prior notice

## DRAWINGS



This drawing is our property. It can't be reproduced or communicated without our written agreement.				Ledil Oy Tehdaskatu 13 FIN-24100 SALO Finland	
DRAWING TITLE		LN2-Lens+LN2-LH1 Tape Holder			
DRAWN BY PV	DATE 03.09.2008	SIZE A4	DRAWING NUMBER	REV 1	
CHECKED BY hh	DATE 02.09.2008	SCALE 2:1	WEIGHT (g)	SHEET 1/1	
DESIGNED BY pv	DATE 28.08.2008				

© Ledil Oy – PRELIMINARY - Subject to change without prior notice