



**Premier
Magnetics Inc.**

"INNOVATORS IN MAGNETICS TECHNOLOGY"

- ① Designed to Support Maxim's MAX253
- ② 1500Vrms Minimum Isolation Voltage
- ③ Designed For >125KHz, 50% Duty Cycle Push-Pull Operation @ 1.0 Watt Output

8-PIN SMD PUSH-PULL TRANSFORMERS

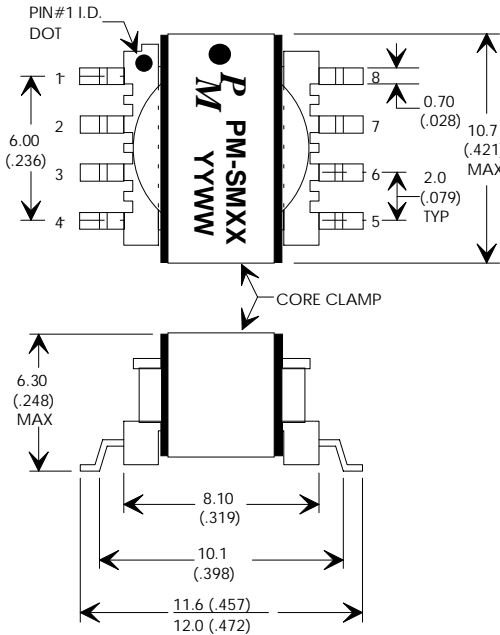
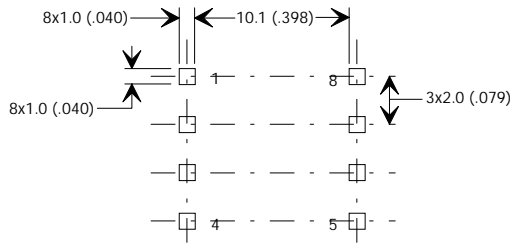
- ④ Low profile 8-Pin SMD Package
- ⑤ Industry Standard Package
- ⑥ Multiple Configurations

ELECTRICAL SPECIFICATIONS AT 25°C - OPERATING TEMPERATURE RANGE -25°C TO +80°C

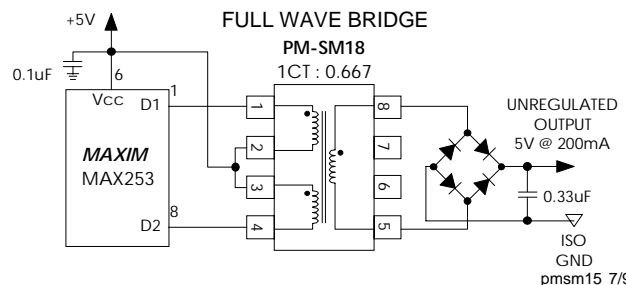
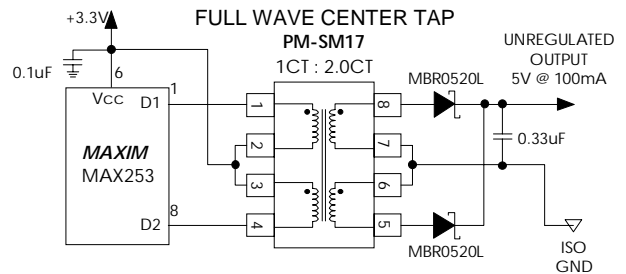
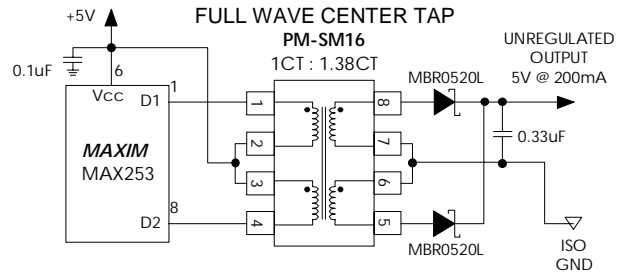
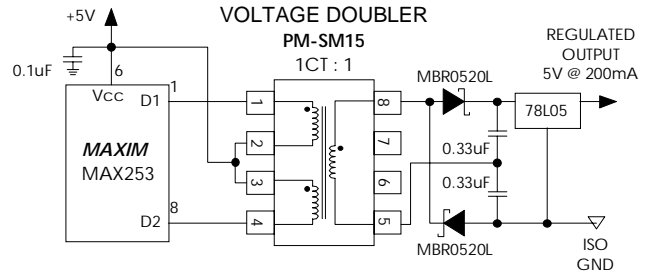
PART NUMBER	TURNS RATIO (Pri:Sec ±5%)	PRIMARY OCL (µH Min.)	Primary Pins	TYPICAL APPLICATION	PRI/SEC HI-POT (Vrms)	GENERAL CHARACTERISTICS
PM-SM15	1CT : 1.00	150	1-4	+5V to +10V	1500	Volt Doubler Driving a Regulator
PM-SM16	1CT : 1.38CT	150	1-4	+5V to +5V	1500	Full Wave Center Tap
PM-SM17	1CT : 2.00CT	150	1-4	+3.3V to +5V	1500	Full Wave Center Tap
PM-SM18	1CT : 0.667	150	1-4	+5V to +5V	1500	Full Wave Bridge

MECHANICALS

RECOMMENDED P.C.B. LAYOUT Dimensions in mm (inches)



TYPICAL APPLICATIONS



Specifications subject to change without notice.

pmsm15 7/97