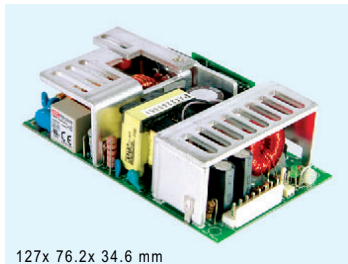
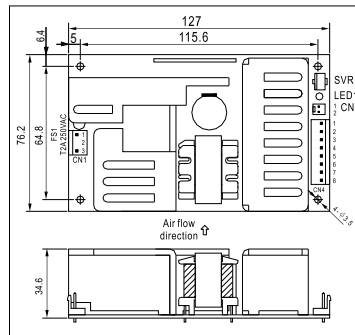


125W 1,3 Output with PFC Function

- Universal AC input/ Full range
- PF>0.98@115VAC, >0.93@230VAC
- High power density 6.117W/in³
- 3"x5" miniature size
- Protections:
Short circuit / Overload / Over voltage
- Built-in remote sense for PPS-125
- LED indicator for power on
- Free air convection for 100W and 125W with 18 CFM forced air
- 100% full load burn-in test
- 3 years warranty



127x 76.2x 34.6 mm



- AC input voltage range 90~264VAC; 127~370VDC
- AC inrush current Cold start, 40A at 230VAC
- DC adjustment range CH1: ±5% rated output voltage
- Overload protection 130~160% fold back current limiting, auto-recovery
- Over voltage protection CH1:110~135% rated output voltage
- Leakage current Less than 2.0 mA at 240VAC
- Setup, rise, hold up time ... 1000ms, 30ms, 24ms at full load and 230VAC
- Withstand voltage I/P-O/P: 3KVAC, I/P-FG:1.5KVAC, 1minute
- Working temperature -20°C~70°C (refer to output derating curve)
- Safety standards UL60950-1, TUV EN60950-1 approved
- EMC standards EN55022 class B, EN61000-3-2,3
EN61000-4-2,3,4,5,6,8,11, ENV50204
- Connection 3+8P /3.96mm pitch, JST: B3P/B8P-VH (PPS-125)
3+5Px2 /3.96mm pitch, JST: B3P/B5Px2-VH (PPT-125)
- Packing 0.37kg; 36pcs / 14.3kg / 0.91CUFT

❖Single output

Stock No.	Model No.	Output	Tol.	R&N	Effi.
12471	PPS-125-3.3	3.3V, 25A	±2%	100mV	70%
12472	PPS-125-5	5V, 25A	±2%	100mV	79%
12473	PPS-125-12	12V, 10.5A	±2%	100mV	80%
12474	PPS-125-13.5	13.5V, 9.3A	±2%	100mV	80%
12475	PPS-125-15	15V, 8.4A	±2%	100mV	80%
12476	PPS-125-24	24V, 5.2A	±1%	150mV	83%
12477	PPS-125-27	27V, 4.6A	±1%	150mV	83%
12478	PPS-125-48	48V, 2.6A	±1%	250mV	84%

❖Triple output

Stock No.	Model No.	Output	Tol.	R&N	Effi.	Max.
12481	PPT-125A	3.3V, 1.0~12.5A	±3%	100mV	75%	99W
		5V, 0.8~10.0A	±5%	100mV		
		12V, 0.05~0.63A	±6%	120mV		
12482	PPT-125B	5V, 1.0~14.38A	±3%	100mV	78%	124W
		12V, 0.3~3.75A	±5%	120mV		
		-12V, 0.05~0.63A	±6%	120mV		
12483	PPT-125C	5V, 1.0~13.75A	±3%	100mV	78%	125W
		15V, 0.25~3.13A	±5%	150mV		
		-15V, 0.05~0.63A	±6%	150mV		
12484	PPT-125D	5V, 1.0~8.75A	±3%	100mV	78%	126W
		24V, 0.25~3.13A	±5%	240mV		
		12V, 0.05~0.63A	±6%	120mV		