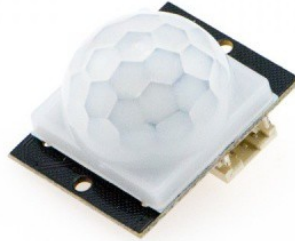


# DFROBOT SHANGHAI ZHIWEI ROBOTICS CO., LTD (AKA DFROBOT)

## Digital Infrared motion sensor (SKU:SEN0018)



Digital Infrared motion sensor (SKU:SEN0018)

This is a simple to use motion sensor. Power it up and wait 1-2 seconds for the sensor to get a snapshot of the still room. If anything moves after that period, the 'alarm' pin will go low.

The sensor integrates a connector, and is shipped with its wire.

Jumper selector for the working mode

Pin	Status	Mode	Comments
1	L)	Unrepeatable trigger mode	
1	H)	Repeatable trigger mode	duration adjustment by potentiometer

### Specification

- Type: Digital
- Supply Voltage:3~5V
- Current:50μA
- Working temperature:0°C~+70°C
- Output level(HIGH):4V
- Output level(LOW):0.4V
- Detect angle:110 Degree
- Detect distance:7 meters
- Size:28mm×36mm
- Weight:25g

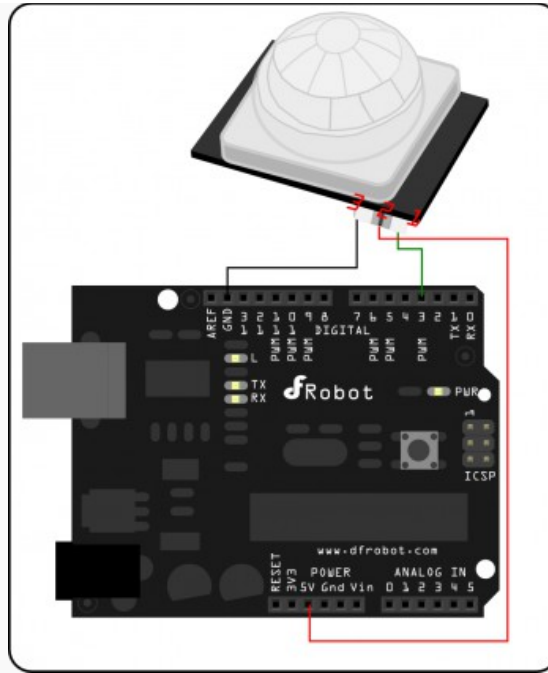
### Pin Definition


- +:Power 5V
- -:GND
- OUT:Digital Signal Out

For DFRobot Version

- 1:Digital Signal Out
- 2:VCC (5V)
- 3:GND

## Connection Diagram



 Motion sensor Connection diagram

## Sample Code

```

1  /*
2  plug infrared motion sensor on digital port 3. If signal is detected, digitalRead
3  will be high. Switch the resistor backward to adjust the sensitivity as you want.
4  */
5  void setup()
6  {
7    Serial.begin(9600);
8  }
9
10 void loop()
11 {
12   Serial.println(digitalRead(3));
13   delay(100);
14 }

```