

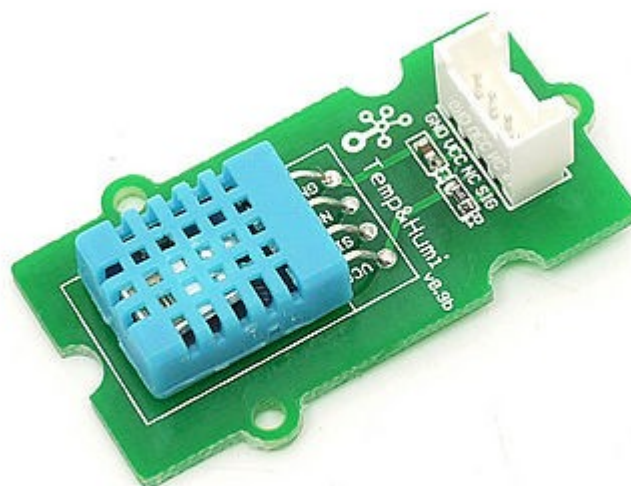
SEED TECHNOLOGY INC (SEEEDUINO)

Grove- Temperature and Humidity Sensor

Model: SEN11301P

Introduction

This temperature & humidity sensor provides a pre-calibrated digital output. A unique capacitive sensor element measures relative humidity and the temperature is measured by a negative temperature coefficient (NTC) thermistor. It has excellent reliability and long term stability. Please note that this sensor will not work for temperatures below 0 degree.

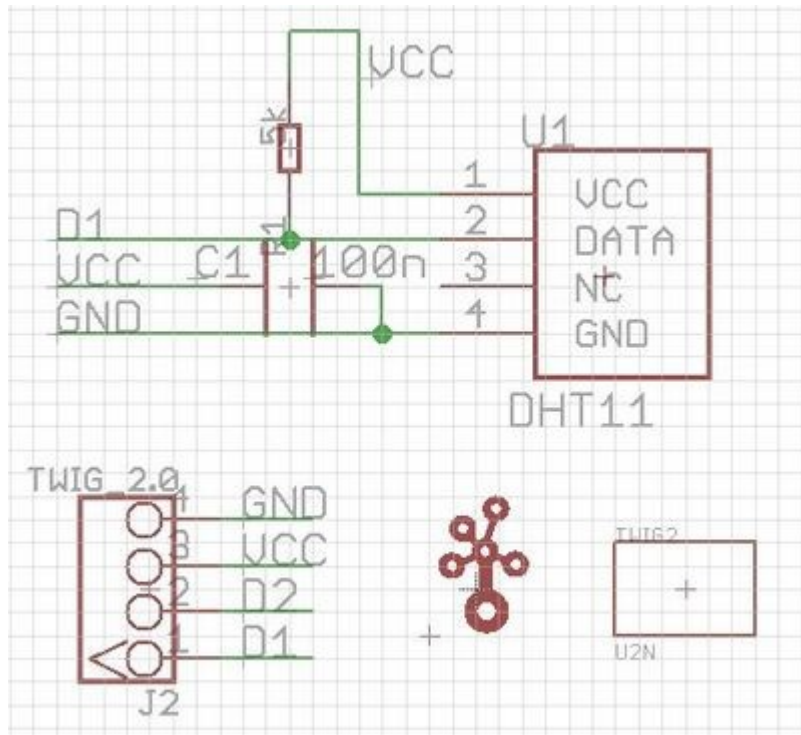


Features

- Relative Humidity and temperature measurement
- Full range temperature compensation Calibrated
- Digital signal
- Long term stability
- Long transmission distance(>20m)
- Low power consumption

Applications Ideas

- Consumption product
- Weather station
- Humidity regulator
- Air conditioner



Specifications

Key Specification

Items	Min
PCB Size	2.0cm*4.0cm
Interface	2.0mm pitch pin header
IO Structure	SIG,VCC,GND,NC
ROHS	YES

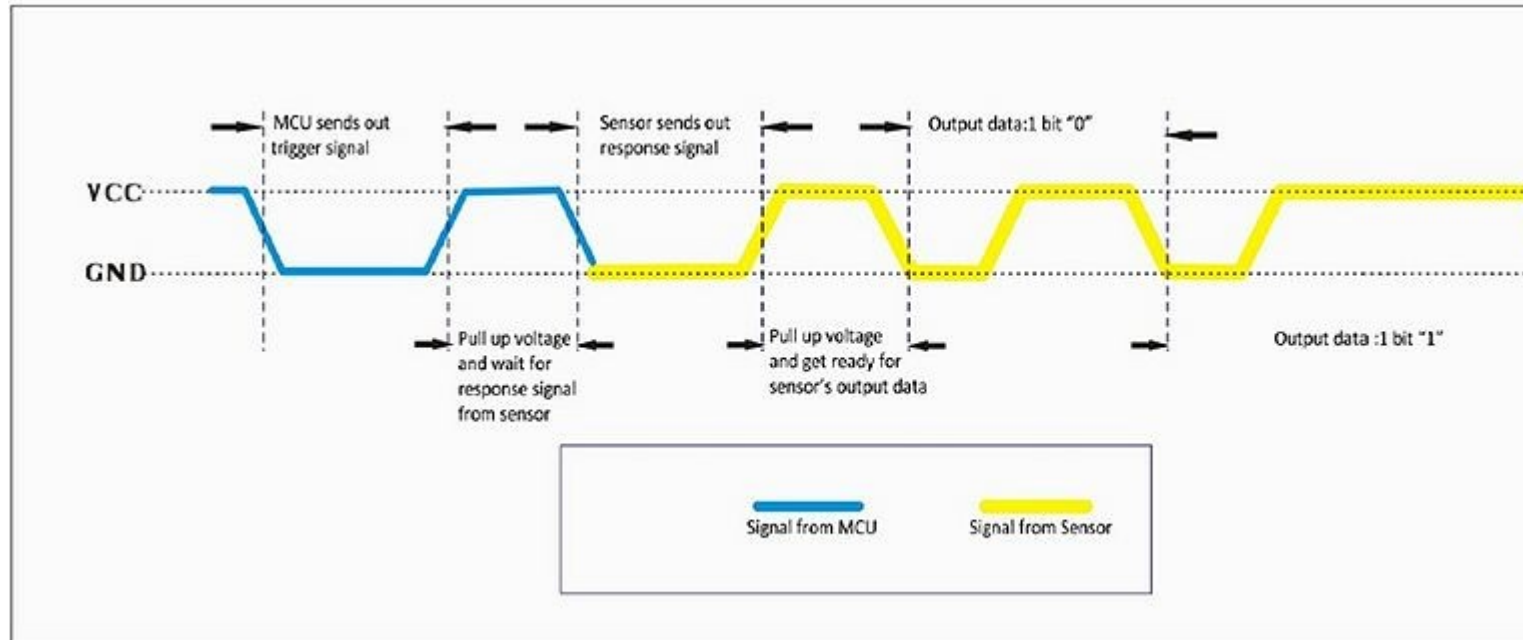
Electronic Characteristics

Items	Conditions	Min	Norm	Max	Unit
VCC	-	3.3	-	5	Volts
Measuring Current Supply	-	1.3	-	2.1	mA
Average Current Supply	-	0.5	-	1.1	mA
Measuring Range	Humidity	20%	-	90%	RH
	Temperature	0	-	50	°C
Accuracy	Humidity	-	-	±5%	RH
	Temperature			±2	°C
Sensitivity	Humidity		-	1%	RH
	Temperature			1	°C
Repeatability	Humidity			±1%	RH
	Temperature			±1	°C
Long-term Stability				±1%	RH/year
Signal Collecting Period			2		S

Usage

When MCU sends a trigger signal, sensor will change from low power consumption mode to active mode. After the trigger signal sensor will send a response signal back to MCU, then 40 bit collected data is sent out and a new signal collecting is triggered. (Note that the 40 bit collected data which is sent from sensor to MCU is already collected before the trigger signal comes.) One trigger signal receives one time 40 bit response data from sensor. Single-bus data is used for communication between MCU and sensor.

The communication process is shown as below:

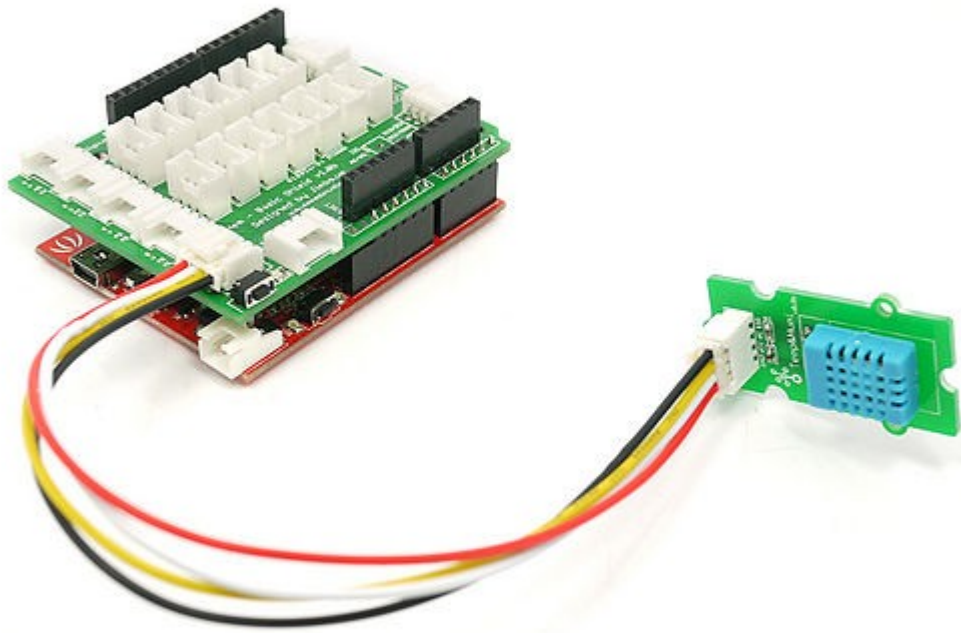


It costs 5mS for single time communication. The high-order bit of data sends out first. Signal Data is 40 bit, comprised of 16 bit humidity data, 16 bit temperature data and 8 bit checksum. The data format is:

8bits integer part of humidity+8bits decimal part of humidity
 +8bits integer part of temperature+8bits decimal part of temperature
 +8bits checksum.

Programming

Connect the Temperature and Humidity sensor to analog port A0. Then you can use the following programme to gain the temperature and humidity of the environment. (The code is for seeeduino only, if you use seeeduino mega you should change the code a little. See below, if you use seeeduino mega, you should change PINC to PINF, change DDRC to DDRF and change PORTC to PORTF)



```
#define DHT11_PIN 0      // ADC0

byte read_dht11_dat()
{
  byte i = 0;
  byte result=0;
  for(i=0; i< 8; i++){

    while(!(PINC & _BV(DHT11_PIN))); // wait for 50us
    delayMicroseconds(30);

    if(PINC & _BV(DHT11_PIN))
      result |= (1<<(7-i));
    while((PINC & _BV(DHT11_PIN))); // wait '1' finish

  }
  return result;
}

void setup()
{
  DDRC |= _BV(DHT11_PIN);
  PORTC |= _BV(DHT11_PIN);

  Serial.begin(9600);

  Serial.println("Ready");
}

void loop()
{
  byte dht11_dat[5];
```

```

byte dht11_in;
byte i;
// start condition
// 1. pull-down i/o pin from 18ms
PORTC &= ~_BV(DHT11_PIN);
delay(18);
PORTC |= _BV(DHT11_PIN);
delayMicroseconds(40);

DDRC &= ~_BV(DHT11_PIN);
delayMicroseconds(40);

dht11_in = PINC & _BV(DHT11_PIN);

if(dht11_in){
  Serial.println("dht11 start condition 1 not met");
  return;
}
delayMicroseconds(80);

dht11_in = PINC & _BV(DHT11_PIN);

if(!dht11_in){
  Serial.println("dht11 start condition 2 not met");
  return;
}
delayMicroseconds(80);
// now ready for data reception
for (i=0; i<5; i++)
  dht11_dat[i] = read_dht11_dat();

DDRC |= _BV(DHT11_PIN);
PORTC |= _BV(DHT11_PIN);

byte dht11_check_sum = dht11_dat[0]+dht11_dat[1]+dht11_dat[2]+dht11_dat[3];
// check check_sum
if(dht11_dat[4] != dht11_check_sum)
{
  Serial.println("DHT11 checksum error");
}

Serial.print("Current humidity = ");
Serial.print(dht11_dat[0], DEC);
Serial.print(".");
Serial.print(dht11_dat[1], DEC);
Serial.print("% ");
Serial.print("temperature = ");
Serial.print(dht11_dat[2], DEC);
Serial.print(".");
Serial.print(dht11_dat[3], DEC);
Serial.println("C ");

delay(2000);
}

```

Version Tracker

Revision	Descriptions	Release
Grove - Temp&Humi Sensor v1.0	Initial public release for Grove module	Jan 14, 2011

Resources

- [Temperature Humidity.zip](#)

See Also

- [GROVE - Starter Bundle](#)

- [2-axis compass Module](#)
- [Grove - I2C 3-axis Accelerometer](#)
- [Grove - 3-axis Gyro](#)
- [Grove - Water Sensor](#)
- [Grove - Light Sensor](#)
- [Grove - Touch Sensor](#)
- [Grove - 3-axis Compass](#)
- [Grove - Magnetic Switch](#)
- [Grove - Alcohol Sensor](#)
- [Grove - OLED 128*64 reversion](#)
- [Grove - Serial LCD](#)
- [Grove - RTC](#)
- [Grove - Electricity Sensor](#)
- [Grove - Sound Sensor](#)
- [Grove - Base Shield](#)

Licensing

This documentation is licensed under the Creative Commons [Attribution-ShareAlike License 3.0](#) Source code and libraries are licensed under [GPL/LGPL](#), see source code files for details.