

# HDC1000EVM User's Guide

## User's Guide



Literature Number: SNAU162  
July 2014

<b>1</b>	<b>Introduction</b> .....	<b>4</b>
<b>2</b>	<b>Setup</b> .....	<b>4</b>
	2.1 Input/Output Connector Description .....	4
	2.2 HW Setup .....	5
	2.3 SW Setup .....	6
	2.4 Operation.....	6
	2.5 Reduce the Thermal Mass of the EVM.....	7
<b>3</b>	<b>Board Layout</b> .....	<b>8</b>
<b>4</b>	<b>Schematic</b> .....	<b>9</b>
<b>5</b>	<b>Bill of Materials</b> .....	<b>10</b>

## List of Figures

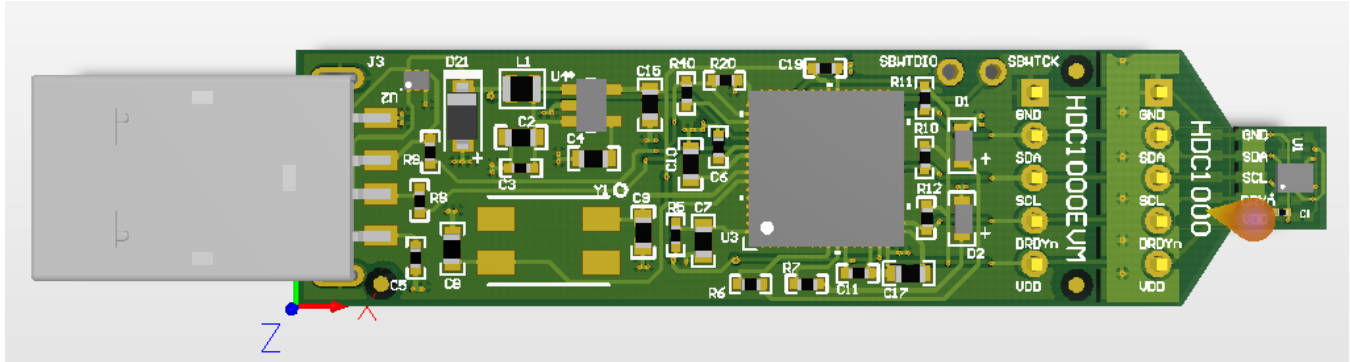
1	HDC1000EVM : Sensor module .....	5
2	HDC1000EVM: Layout Resistors for I2C Address Setting .....	6
3	HDC1000EVM : PC Interface and Sensor Module .....	7
4	HDC1000EVM : PC Interface and Smaller Sensor Module .....	7
5	HDC1000EVM : Pads for I2C and Supply of the Smaller Sensor Module .....	7
6	Top Layer Routing .....	8
7	Bottom Layer Routing .....	8
8	HDC1000EVM Schematic .....	9

## List of Tables

1	Device and Package Configurations .....	4
2	I2C Address .....	6

# HDC1000EVM User's Guide

## 1 Introduction



The HDC1000EVM (EVM) evaluation kit is a plug and play system to test and evaluate the HDC1000 humidity and temperature sensor. The EVM is a breakable PCB which consists of 3 sections. The first section is a USB to I2C converter based on MSP430F5528 micro-controller, the second section is a conversion board ( to SIL 100mil pitch) with the HDC1000 and the third section is a narrow 5mm x 5.5mm PCB with the HDC1000 ( to SIL 50mil pitch) which allows to reduce the thermal mass of the system (sensor + PCB). Both second and third section can be used for remote measurements. The EVM does not need additional hardware, calibration, nor does it require any software programming - only the HDC1000EVM GUI has to be installed. The software is able to configure the HDC1000's registers, display temperature and relative humidity in two graphs and export data in CSV format.

The EVM contains one HDC1000 (See [Table 1](#)).

**Table 1. Device and Package Configurations**

DEVICE	IC	PACKAGE
U1	HDC1000YPAR	DSBGA - 8 pin (YPA0008)

## 2 Setup

This section describes the connectors on the EVM as well and how to properly connect, setup and use the HDC1000EVM.

### 2.1 Input/Output Connector Description

J1 – 5x1 Header it is not populated and can be populated in case the EVM is broken in 2 modules: PC interface and Sensor. This connector with its counterpart J2 allows the communication of the two modules through a 5-wire cable.

J1.1	GND
J1.2	SDA
J1.3	SCL
J1.4	DRDYn
J1.5	VDD

J2 – 5x1 Header it is not populated and can be populated in case the EVM is broken in 2 modules: PC interface and Sensor. This connector with its counterpart J1 allows the communication of the two modules through a 5-wire cable.

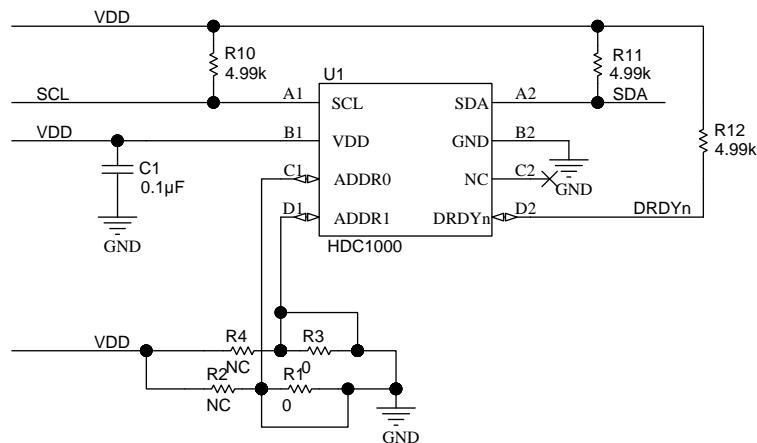
J1.1	GND
J1.2	SDA
J1.3	SCL
J1.4	DRDYn
J1.5	VDD

J3 – USB Type A Connector, it is the mechanical interface between the PC and the EVM, through this connector the EVM communicate to the PC and receive the power.

## 2.2 HW Setup

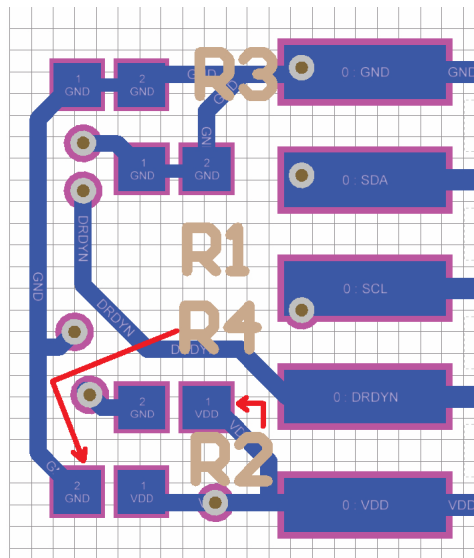
The HDC1000 on the EVM is supplied at 3.3 V through an LDO (U2), which is supplied from the USB. The I2C address of the HDC1000 is set at EVM level at 1000000xb on the EVM.

The I2C address has been set replacing the resistors R3 and R1 with a short (refer to [Figure 1](#)).



**Figure 1. HDC1000EVM : Sensor module**

In order to change the I2C address, cut the short (with a cutter) and populate the R2 and R4 with 0 Ω resistors (refer to [Figure 2](#))


**Figure 2. HDC1000EVM: Layout Resistors for I2C Address Setting**
**Table 2. I2C Address**

ADR1	ADR0	R1	R2	R3	R4	HDC1000 ADDRESS
<b>0</b>	<b>0</b>	<b>Short</b>	<b>Open</b>	<b>Short</b>	<b>Open</b>	<b>1000000</b>
0	1	Open	Short	Short	Open	1000001
1	0	Short	Open	Open	Short	1000010
1	1	Open	Short	Open	Short	1000011

In the table above, the EVM default configuration is in **bold**.

### 2.3 SW Setup

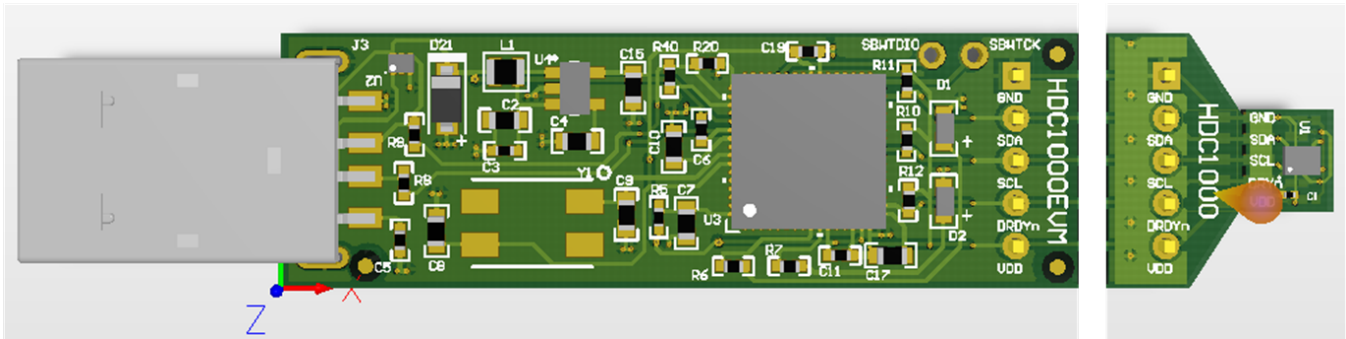
Make sure that the HDC1000 GUI and the drivers have been installed on the host. Connect the USB of the EVM to the host.

### 2.4 Operation

Plug the EVM into an available USB port on the host computer. The host computer should automatically detect the device as HDC1000EVM. Launch the GUI. Push the "START" button to acquire and stream relative humidity and temperature.

## 2.5 Reduce the Thermal Mass of the EVM

The HDC1000EVM can be broken in 2 main modules: PC interface and Sensor (Refer to [Figure 3](#)).

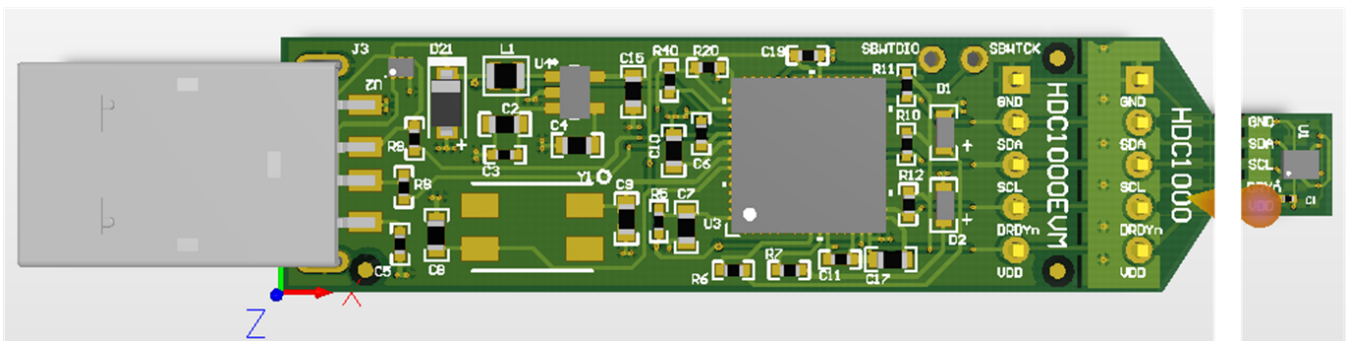


**Figure 3. HDC1000EVM : PC Interface and Sensor Module**

The communication between the two modules is ensured through the connector J1 and J2 and a 5-wire cable. In this configuration the thermal mass of the EVM is dramatically reduced, improving the temperature measurements performances of the HDC1000.

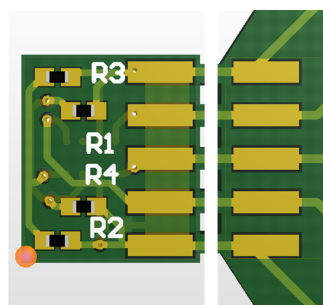
When the EVM is broken in 2 sections it is still possible to use the GUI to configure the HDC1000 (ensuring the connections between the modules) or alternatively it is possible to connect the sensor module to a custom micro-controller.

In case the thermal mass is still too large the Sensor module can be broken into two sections, in this condition the HDC1000 PCB section is only 5.5mm x 5mm (Refer to [Figure 4](#)).



**Figure 4. HDC1000EVM : PC Interface and Smaller Sensor Module**

Also in the case where the EVM is broken in 2 sections it is still possible to use the GUI (ensuring the connections between the modules) or alternatively it is possible to connect the sensor module to a custom micro-controller. (Refer to [Figure 5](#)).



**Figure 5. HDC1000EVM : Pads for I2C and Supply of the Smaller Sensor Module**

### 3 Board Layout

Figure 6 and Figure 7 show the board layout for the HDC1000EVM.

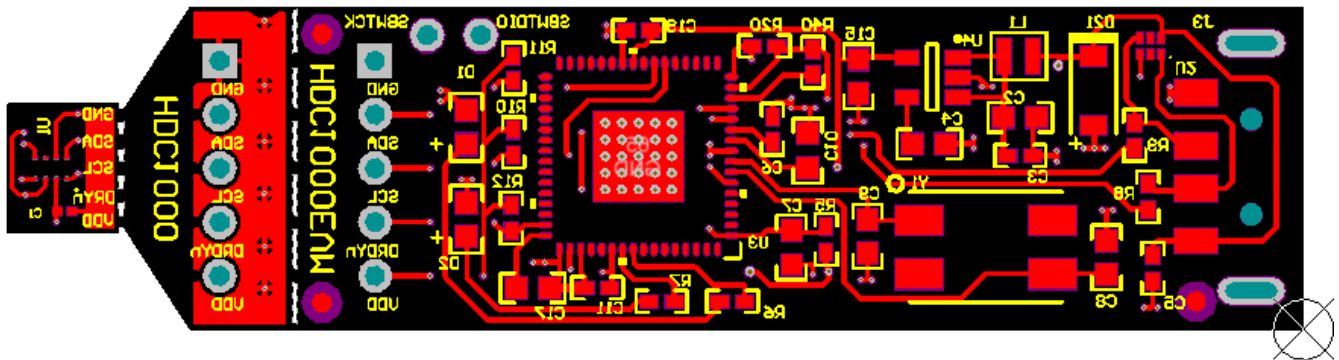


Figure 6. Top Layer Routing

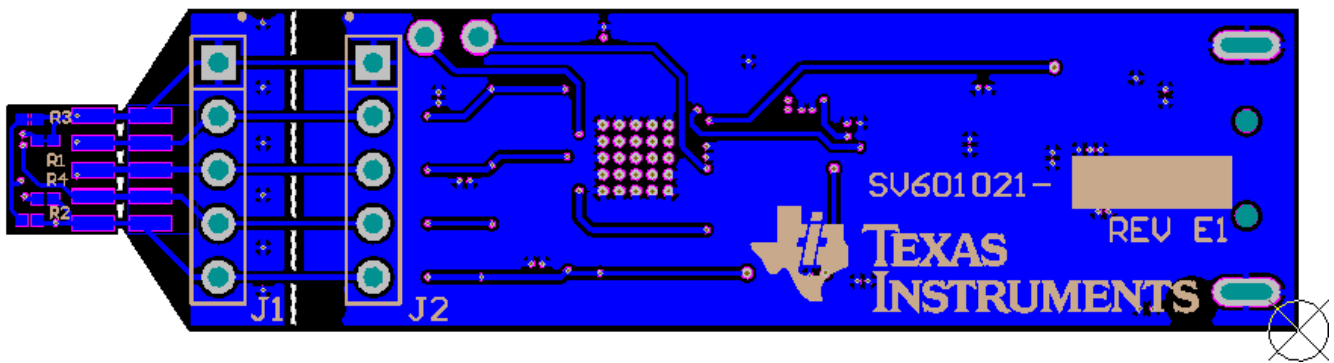


Figure 7. Bottom Layer Routing



### 4 Schematic

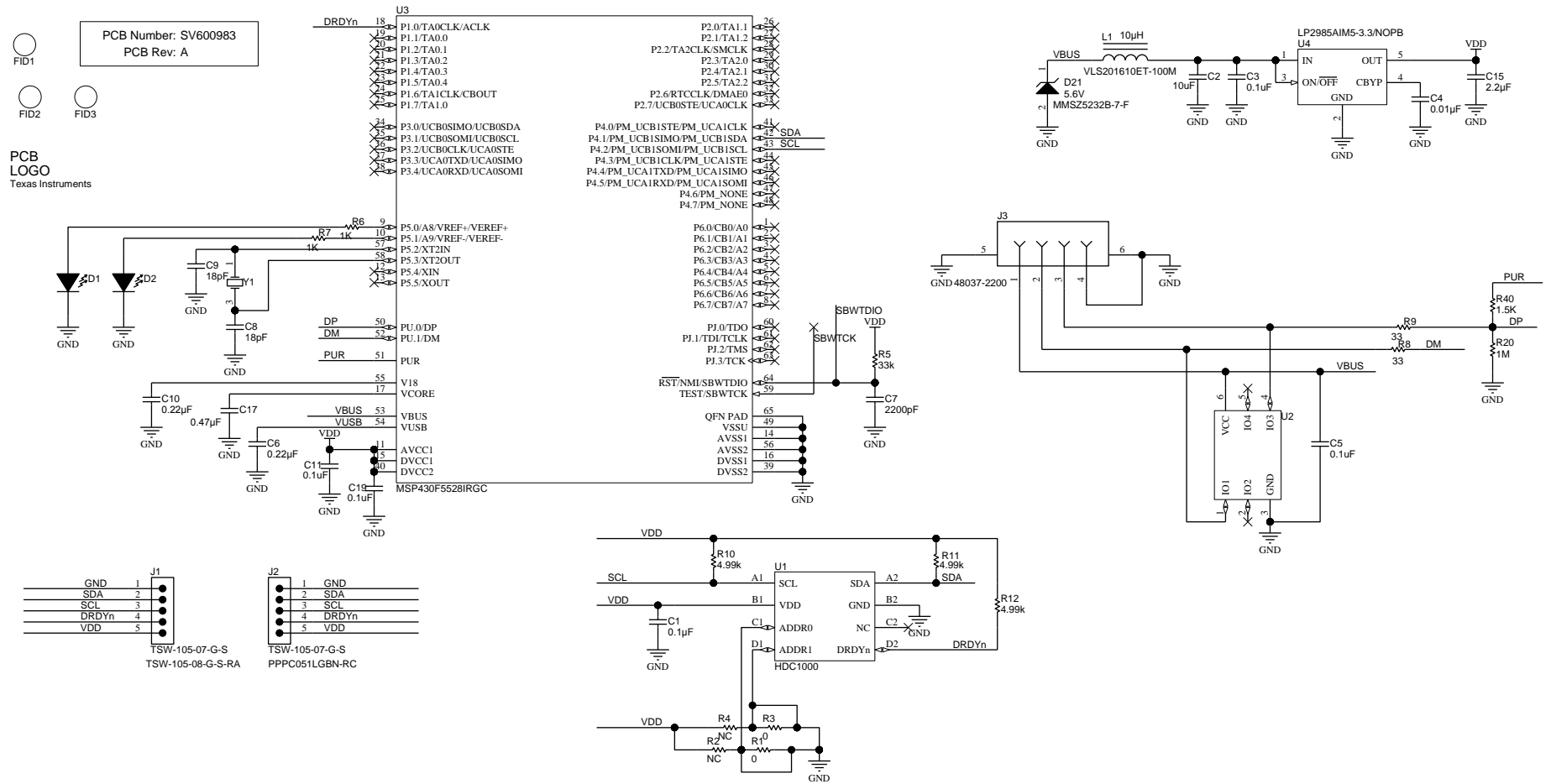


Figure 8. HDC1000EVM Schematic

**5 Bill of Materials**

COUNT	REF DES	DESCRIPTION	FOOTPRINT	PART NUMBER
1	C1	CAP, CERM, 0.1uF, 10V, +/-10%, X5R, 0201	0201	CL03A104KP3NNNC
1	C2	CAP CER 10UF 10V 10% X5R 0603	0603	C1608X5R1A106K080AC
4	C3, C5, C11, C19	CAP CER 0.1UF 16V 5% X7R 0402	0402	GRM155R71C104JA88D
1	C4	CAP, CERM, 0.01uF, 25V, +/-5%, C0G/NP0, 0603	0603	C1608C0G1E103J
1	C6	CAP, CERM, 0.22uF, 16V, +/-10%, X7R, 0402	0402	GRM155R71C224KA12D
1	C7	CAP, CERM, 2200pF, 50V, +/-10%, X7R, 0603	0603	C0603X222K5RACTU
2	C8, C9	CAP CER 18PF 100V 5% NP0 0603	0603	GRM1885C2A180JA01D
1	C10	CAP, CERM, 0.22uF, 25V, +/-10%, X5R, 0603	0603	C0603C225K8PACTU
1	C15	CAP, CERM, 2.2uF, 10V, +/-10%, X5R, 0603	0603	C0603C225K8PACTU
1	C17	CAP, CERM, 0.47uF, 10V, +/-10%, X7R, 0603	0603	C0603C474K8RACTU
1	D1	GREEN LED, 1.7x0.65x0.8mm	0603	LG L29K-G2J1-24-Z
1	D2	RED LED DIFF, 1.6x0.60x0.8mm	0603	SML-LX0603SRW-TR
1	D21	Diode, Zener, 5.6V, 500mW, SOD-123	SOD-123	MMSZ5232B-7-F
2	J1, J2	Header, TH, 100mil, 5x1, Gold plated, 230 mil above insulator	-	TSW-105-07-G-S
1	J3	Connector, USB Type A, 4POS R/A, SMD	-	48037-2200
1	L1	INDUCTOR POWER 10UH .45A SMD	VLS201610	VLS201610ET-100M
4	R1, R2, R3, R4	RES, 0 $\Omega$ , 5%, 0.05W, 0201	0201M	ERJ-1GE0R00C
1	R5	RES, 33k $\Omega$ , 5%, 0.063W, 0402	0402	CRCW040233K0JNED
2	R6, R7	RES 1K $\Omega$ 1/10W 5% 0402 SMD	0402	CRCW04021K00JNED
2	R8, R9	RES, 33 $\Omega$ , 5%, 0.063W, 0402	0402	CRCW040233R0JNED
3	R10, R11, R12	RES, 4.99k ohm, 1%, 0.063W, 0402	0402	CRCW04024K99FKE
1	R20	RES, 1M ohm, 5%, 0.063W, 0402	0402	CRCW040233K0JNED
1	R40	RES, 1.50k ohm, 1%, 0.063W, 0402	0402	CRCW04021K50FKED
1	U1	HDC1000 – Relative Humidity and Temperature sensor	YPA0008	HDC1000
1	U2	4-CHANNEL ESD-PROTECTION ARRAY FOR HIGH-SPEED DATA INTERFACES, DRY006A	DRY0006A	TPD4E004DRY
1	U3	Mixed Signal micro-controller, RGC0064B	RGC0064B	MSP430F5528IRGC
1	U4	Micropower 150 mA Low-Noise Ultra Low-Dropout Regulator, 5-pin SOT-23, Pb-Free	MF05A_N	LP2985AIM5-3.3/NOPB
1	Y1	CRYSTAL 24.000MHZ 18PF SMD	ABMM	ABMM-24.000MHZ-B2-T

## ADDITIONAL TERMS AND CONDITIONS, WARNINGS, RESTRICTIONS, AND DISCLAIMERS FOR EVALUATION MODULES

Texas Instruments Incorporated (TI) markets, sells, and loans all evaluation boards, kits, and/or modules (EVMs) pursuant to, and user expressly acknowledges, represents, and agrees, and takes sole responsibility and risk with respect to, the following:

1. User agrees and acknowledges that EVMs are intended to be handled and used for feasibility evaluation only in laboratory and/or development environments. Notwithstanding the foregoing, in certain instances, TI makes certain EVMs available to users that do not handle and use EVMs solely for feasibility evaluation only in laboratory and/or development environments, but may use EVMs in a hobbyist environment. All EVMs made available to hobbyist users are FCC certified, as applicable. Hobbyist users acknowledge, agree, and shall comply with all applicable terms, conditions, warnings, and restrictions in this document and are subject to the disclaimer and indemnity provisions included in this document.
2. Unless otherwise indicated, EVMs are not finished products and not intended for consumer use. EVMs are intended solely for use by technically qualified electronics experts who are familiar with the dangers and application risks associated with handling electrical mechanical components, systems, and subsystems.
3. User agrees that EVMs shall not be used as, or incorporated into, all or any part of a finished product.
4. User agrees and acknowledges that certain EVMs may not be designed or manufactured by TI.
5. User must read the user's guide and all other documentation accompanying EVMs, including without limitation any warning or restriction notices, prior to handling and/or using EVMs. Such notices contain important safety information related to, for example, temperatures and voltages. For additional information on TI's environmental and/or safety programs, please visit [www.ti.com/esh](http://www.ti.com/esh) or contact TI.
6. User assumes all responsibility, obligation, and any corresponding liability for proper and safe handling and use of EVMs.
7. Should any EVM not meet the specifications indicated in the user's guide or other documentation accompanying such EVM, the EVM may be returned to TI within 30 days from the date of delivery for a full refund. THE FOREGOING LIMITED WARRANTY IS THE EXCLUSIVE WARRANTY MADE BY TI TO USER AND IS IN LIEU OF ALL OTHER WARRANTIES, EXPRESSED, IMPLIED, OR STATUTORY, INCLUDING ANY WARRANTY OF MERCHANTABILITY OR FITNESS FOR ANY PARTICULAR PURPOSE. TI SHALL NOT BE LIABLE TO USER FOR ANY INDIRECT, SPECIAL, INCIDENTAL, OR CONSEQUENTIAL DAMAGES RELATED TO THE HANDLING OR USE OF ANY EVM.
8. No license is granted under any patent right or other intellectual property right of TI covering or relating to any machine, process, or combination in which EVMs might be or are used. TI currently deals with a variety of customers, and therefore TI's arrangement with the user is not exclusive. TI assumes no liability for applications assistance, customer product design, software performance, or infringement of patents or services with respect to the handling or use of EVMs.
9. User assumes sole responsibility to determine whether EVMs may be subject to any applicable federal, state, or local laws and regulatory requirements (including but not limited to U.S. Food and Drug Administration regulations, if applicable) related to its handling and use of EVMs and, if applicable, compliance in all respects with such laws and regulations.
10. User has sole responsibility to ensure the safety of any activities to be conducted by it and its employees, affiliates, contractors or designees, with respect to handling and using EVMs. Further, user is responsible to ensure that any interfaces (electronic and/or mechanical) between EVMs and any human body are designed with suitable isolation and means to safely limit accessible leakage currents to minimize the risk of electrical shock hazard.
11. User shall employ reasonable safeguards to ensure that user's use of EVMs will not result in any property damage, injury or death, even if EVMs should fail to perform as described or expected.
12. User shall be solely responsible for proper disposal and recycling of EVMs consistent with all applicable federal, state, and local requirements.

**Certain Instructions.** User shall operate EVMs within TI's recommended specifications and environmental considerations per the user's guide, accompanying documentation, and any other applicable requirements. Exceeding the specified ratings (including but not limited to input and output voltage, current, power, and environmental ranges) for EVMs may cause property damage, personal injury or death. If there are questions concerning these ratings, user should contact a TI field representative prior to connecting interface electronics including input power and intended loads. Any loads applied outside of the specified output range may result in unintended and/or inaccurate operation and/or possible permanent damage to the EVM and/or interface electronics. Please consult the applicable EVM user's guide prior to connecting any load to the EVM output. If there is uncertainty as to the load specification, please contact a TI field representative. During normal operation, some circuit components may have case temperatures greater than 60°C as long as the input and output are maintained at a normal ambient operating temperature. These components include but are not limited to linear regulators, switching transistors, pass transistors, and current sense resistors which can be identified using EVMs' schematics located in the applicable EVM user's guide. When placing measurement probes near EVMs during normal operation, please be aware that EVMs may become very warm. As with all electronic evaluation tools, only qualified personnel knowledgeable in electronic measurement and diagnostics normally found in development environments should use EVMs.

**Agreement to Defend, Indemnify and Hold Harmless.** User agrees to defend, indemnify, and hold TI, its directors, officers, employees, agents, representatives, affiliates, licensors and their representatives harmless from and against any and all claims, damages, losses, expenses, costs and liabilities (collectively, "Claims") arising out of, or in connection with, any handling and/or use of EVMs. User's indemnity shall apply whether Claims arise under law of tort or contract or any other legal theory, and even if EVMs fail to perform as described or expected.

**Safety-Critical or Life-Critical Applications.** If user intends to use EVMs in evaluations of safety critical applications (such as life support), and a failure of a TI product considered for purchase by user for use in user's product would reasonably be expected to cause severe personal injury or death such as devices which are classified as FDA Class III or similar classification, then user must specifically notify TI of such intent and enter into a separate Assurance and Indemnity Agreement.

## **RADIO FREQUENCY REGULATORY COMPLIANCE INFORMATION FOR EVALUATION MODULES**

Texas Instruments Incorporated (TI) evaluation boards, kits, and/or modules (EVMs) and/or accompanying hardware that is marketed, sold, or loaned to users may or may not be subject to radio frequency regulations in specific countries.

### **General Statement for EVMs Not Including a Radio**

For EVMs not including a radio and not subject to the U.S. Federal Communications Commission (FCC) or Industry Canada (IC) regulations, TI intends EVMs to be used only for engineering development, demonstration, or evaluation purposes. EVMs are not finished products typically fit for general consumer use. EVMs may nonetheless generate, use, or radiate radio frequency energy, but have not been tested for compliance with the limits of computing devices pursuant to part 15 of FCC or the ICES-003 rules. Operation of such EVMs may cause interference with radio communications, in which case the user at his own expense will be required to take whatever measures may be required to correct this interference.

### **General Statement for EVMs including a radio**

*User Power/Frequency Use Obligations:* For EVMs including a radio, the radio included in such EVMs is intended for development and/or professional use only in legally allocated frequency and power limits. Any use of radio frequencies and/or power availability in such EVMs and their development application(s) must comply with local laws governing radio spectrum allocation and power limits for such EVMs. It is the user's sole responsibility to only operate this radio in legally acceptable frequency space and within legally mandated power limitations. Any exceptions to this are strictly prohibited and unauthorized by TI unless user has obtained appropriate experimental and/or development licenses from local regulatory authorities, which is the sole responsibility of the user, including its acceptable authorization.

### **U.S. Federal Communications Commission Compliance**

#### **For EVMs Annotated as FCC – FEDERAL COMMUNICATIONS COMMISSION Part 15 Compliant**

##### **Caution**

This device complies with part 15 of the FCC Rules. Operation is subject to the following two conditions: (1) This device may not cause harmful interference, and (2) this device must accept any interference received, including interference that may cause undesired operation. Changes or modifications could void the user's authority to operate the equipment.

##### **FCC Interference Statement for Class A EVM devices**

This equipment has been tested and found to comply with the limits for a Class A digital device, pursuant to part 15 of the FCC Rules. These limits are designed to provide reasonable protection against harmful interference when the equipment is operated in a commercial environment. This equipment generates, uses, and can radiate radio frequency energy and, if not installed and used in accordance with the instruction manual, may cause harmful interference to radio communications. Operation of this equipment in a residential area is likely to cause harmful interference in which case the user will be required to correct the interference at its own expense.

##### **FCC Interference Statement for Class B EVM devices**

This equipment has been tested and found to comply with the limits for a Class B digital device, pursuant to part 15 of the FCC Rules. These limits are designed to provide reasonable protection against harmful interference in a residential installation. This equipment generates, uses and can radiate radio frequency energy and, if not installed and used in accordance with the instructions, may cause harmful interference to radio communications. However, there is no guarantee that interference will not occur in a particular installation. If this equipment does cause harmful interference to radio or television reception, which can be determined by turning the equipment off and on, the user is encouraged to try to correct the interference by one or more of the following measures:

- Reorient or relocate the receiving antenna.
- Increase the separation between the equipment and receiver.
- Connect the equipment into an outlet on a circuit different from that to which the receiver is connected.
- Consult the dealer or an experienced radio/TV technician for help.

##### **Industry Canada Compliance (English)**

#### **For EVMs Annotated as IC – INDUSTRY CANADA Compliant:**

This Class A or B digital apparatus complies with Canadian ICES-003.

Changes or modifications not expressly approved by the party responsible for compliance could void the user's authority to operate the equipment.

##### **Concerning EVMs Including Radio Transmitters**

This device complies with Industry Canada licence-exempt RSS standard(s). Operation is subject to the following two conditions: (1) this device may not cause interference, and (2) this device must accept any interference, including interference that may cause undesired operation of the device.

##### **Concerning EVMs Including Detachable Antennas**

Under Industry Canada regulations, this radio transmitter may only operate using an antenna of a type and maximum (or lesser) gain approved for the transmitter by Industry Canada. To reduce potential radio interference to other users, the antenna type and its gain should be so chosen that the equivalent isotropically radiated power (e.i.r.p.) is not more than that necessary for successful communication.

This radio transmitter has been approved by Industry Canada to operate with the antenna types listed in the user guide with the maximum permissible gain and required antenna impedance for each antenna type indicated. Antenna types not included in this list, having a gain greater than the maximum gain indicated for that type, are strictly prohibited for use with this device.

## Canada Industry Canada Compliance (French)

Cet appareil numérique de la classe A ou B est conforme à la norme NMB-003 du Canada

Les changements ou les modifications pas expressément approuvés par la partie responsable de la conformité ont pu vider l'autorité de l'utilisateur pour actionner l'équipement.

### Concernant les EVMs avec appareils radio

Le présent appareil est conforme aux CNR d'Industrie Canada applicables aux appareils radio exempts de licence. L'exploitation est autorisée aux deux conditions suivantes : (1) l'appareil ne doit pas produire de brouillage, et (2) l'utilisateur de l'appareil doit accepter tout brouillage radioélectrique subi, même si le brouillage est susceptible d'en compromettre le fonctionnement.

### Concernant les EVMs avec antennes détachables

Conformément à la réglementation d'Industrie Canada, le présent émetteur radio peut fonctionner avec une antenne d'un type et d'un gain maximal (ou inférieur) approuvé pour l'émetteur par Industrie Canada. Dans le but de réduire les risques de brouillage radioélectrique à l'intention des autres utilisateurs, il faut choisir le type d'antenne et son gain de sorte que la puissance isotrope rayonnée équivalente (p.i.r.e.) ne dépasse pas l'intensité nécessaire à l'établissement d'une communication satisfaisante.

Le présent émetteur radio a été approuvé par Industrie Canada pour fonctionner avec les types d'antenne énumérés dans le manuel d'usage et ayant un gain admissible maximal et l'impédance requise pour chaque type d'antenne. Les types d'antenne non inclus dans cette liste, ou dont le gain est supérieur au gain maximal indiqué, sont strictement interdits pour l'exploitation de l'émetteur.

Mailing Address: Texas Instruments, Post Office Box 655303, Dallas, Texas 75265  
Copyright © 2014, Texas Instruments Incorporated

## Important Notice for Users of EVMs Considered “Radio Frequency Products” in Japan

**EVMs entering Japan are NOT certified by TI as conforming to Technical Regulations of Radio Law of Japan.**

If user uses EVMs in Japan, user is required by Radio Law of Japan to follow the instructions below with respect to EVMs:

1. Use EVMs in a shielded room or any other test facility as defined in the notification #173 issued by Ministry of Internal Affairs and Communications on March 28, 2006, based on Sub-section 1.1 of Article 6 of the Ministry's Rule for Enforcement of Radio Law of Japan,
2. Use EVMs only after user obtains the license of Test Radio Station as provided in Radio Law of Japan with respect to EVMs, or
3. Use of EVMs only after user obtains the Technical Regulations Conformity Certification as provided in Radio Law of Japan with respect to EVMs. Also, do not transfer EVMs, unless user gives the same notice above to the transferee. Please note that if user does not follow the instructions above, user will be subject to penalties of Radio Law of Japan.

<http://www.tij.co.jp>

【無線電波を送信する製品の開発キットをお使いになる際の注意事項】本開発キットは技術基準適合証明を受けておりません。本製品のご使用に際しては、電波法遵守のため、以下のいずれかの措置を取っていただく必要がありますのでご注意ください。

1. 電波法施行規則第6条第1項第1号に基づく平成18年3月28日総務省告示第173号で定められた電波暗室等の試験設備でご使用いただく。
2. 実験局の免許を取得後ご使用いただく。
3. 技術基準適合証明を取得後ご使用いただく。。

なお、本製品は、上記の「ご使用にあたっての注意」を譲渡先、移転先に通知しない限り、譲渡、移転できないものとします

上記を遵守頂けない場合は、電波法の罰則が適用される可能性があることをご留意ください。

日本テキサス・インスツルメンツ株式会社

東京都新宿区西新宿6丁目24番1号

西新宿三井ビル

<http://www.tij.co.jp>

Texas Instruments Japan Limited

(address) 24-1, Nishi-Shinjuku 6 chome, Shinjuku-ku, Tokyo, Japan

## IMPORTANT NOTICE

Texas Instruments Incorporated and its subsidiaries (TI) reserve the right to make corrections, enhancements, improvements and other changes to its semiconductor products and services per JESD46, latest issue, and to discontinue any product or service per JESD48, latest issue. Buyers should obtain the latest relevant information before placing orders and should verify that such information is current and complete. All semiconductor products (also referred to herein as "components") are sold subject to TI's terms and conditions of sale supplied at the time of order acknowledgment.

TI warrants performance of its components to the specifications applicable at the time of sale, in accordance with the warranty in TI's terms and conditions of sale of semiconductor products. Testing and other quality control techniques are used to the extent TI deems necessary to support this warranty. Except where mandated by applicable law, testing of all parameters of each component is not necessarily performed.

TI assumes no liability for applications assistance or the design of Buyers' products. Buyers are responsible for their products and applications using TI components. To minimize the risks associated with Buyers' products and applications, Buyers should provide adequate design and operating safeguards.

TI does not warrant or represent that any license, either express or implied, is granted under any patent right, copyright, mask work right, or other intellectual property right relating to any combination, machine, or process in which TI components or services are used. Information published by TI regarding third-party products or services does not constitute a license to use such products or services or a warranty or endorsement thereof. Use of such information may require a license from a third party under the patents or other intellectual property of the third party, or a license from TI under the patents or other intellectual property of TI.

Reproduction of significant portions of TI information in TI data books or data sheets is permissible only if reproduction is without alteration and is accompanied by all associated warranties, conditions, limitations, and notices. TI is not responsible or liable for such altered documentation. Information of third parties may be subject to additional restrictions.

Resale of TI components or services with statements different from or beyond the parameters stated by TI for that component or service voids all express and any implied warranties for the associated TI component or service and is an unfair and deceptive business practice. TI is not responsible or liable for any such statements.

Buyer acknowledges and agrees that it is solely responsible for compliance with all legal, regulatory and safety-related requirements concerning its products, and any use of TI components in its applications, notwithstanding any applications-related information or support that may be provided by TI. Buyer represents and agrees that it has all the necessary expertise to create and implement safeguards which anticipate dangerous consequences of failures, monitor failures and their consequences, lessen the likelihood of failures that might cause harm and take appropriate remedial actions. Buyer will fully indemnify TI and its representatives against any damages arising out of the use of any TI components in safety-critical applications.

In some cases, TI components may be promoted specifically to facilitate safety-related applications. With such components, TI's goal is to help enable customers to design and create their own end-product solutions that meet applicable functional safety standards and requirements. Nonetheless, such components are subject to these terms.

No TI components are authorized for use in FDA Class III (or similar life-critical medical equipment) unless authorized officers of the parties have executed a special agreement specifically governing such use.

Only those TI components which TI has specifically designated as military grade or "enhanced plastic" are designed and intended for use in military/aerospace applications or environments. Buyer acknowledges and agrees that any military or aerospace use of TI components which have **not** been so designated is solely at the Buyer's risk, and that Buyer is solely responsible for compliance with all legal and regulatory requirements in connection with such use.

TI has specifically designated certain components as meeting ISO/TS16949 requirements, mainly for automotive use. In any case of use of non-designated products, TI will not be responsible for any failure to meet ISO/TS16949.

### Products

Audio	<a href="http://www.ti.com/audio">www.ti.com/audio</a>
Amplifiers	<a href="http://amplifier.ti.com">amplifier.ti.com</a>
Data Converters	<a href="http://dataconverter.ti.com">dataconverter.ti.com</a>
DLP® Products	<a href="http://www.dlp.com">www.dlp.com</a>
DSP	<a href="http://dsp.ti.com">dsp.ti.com</a>
Clocks and Timers	<a href="http://www.ti.com/clocks">www.ti.com/clocks</a>
Interface	<a href="http://interface.ti.com">interface.ti.com</a>
Logic	<a href="http://logic.ti.com">logic.ti.com</a>
Power Mgmt	<a href="http://power.ti.com">power.ti.com</a>
Microcontrollers	<a href="http://microcontroller.ti.com">microcontroller.ti.com</a>
RFID	<a href="http://www.ti-rfid.com">www.ti-rfid.com</a>
OMAP Applications Processors	<a href="http://www.ti.com/omap">www.ti.com/omap</a>
Wireless Connectivity	<a href="http://www.ti.com/wirelessconnectivity">www.ti.com/wirelessconnectivity</a>

### Applications

Automotive and Transportation	<a href="http://www.ti.com/automotive">www.ti.com/automotive</a>
Communications and Telecom	<a href="http://www.ti.com/communications">www.ti.com/communications</a>
Computers and Peripherals	<a href="http://www.ti.com/computers">www.ti.com/computers</a>
Consumer Electronics	<a href="http://www.ti.com/consumer-apps">www.ti.com/consumer-apps</a>
Energy and Lighting	<a href="http://www.ti.com/energy">www.ti.com/energy</a>
Industrial	<a href="http://www.ti.com/industrial">www.ti.com/industrial</a>
Medical	<a href="http://www.ti.com/medical">www.ti.com/medical</a>
Security	<a href="http://www.ti.com/security">www.ti.com/security</a>
Space, Avionics and Defense	<a href="http://www.ti.com/space-avionics-defense">www.ti.com/space-avionics-defense</a>
Video and Imaging	<a href="http://www.ti.com/video">www.ti.com/video</a>

### TI E2E Community

[e2e.ti.com](http://e2e.ti.com)