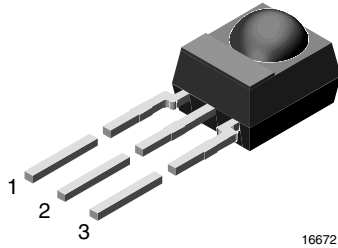


## IR Receiver Modules for Remote Control Systems



### MECHANICAL DATA

#### Pinning

1 = OUT, 2 =  $V_S$ , 3 = GND

### FEATURES

- Low supply current
- Photo detector and preamplifier in one package
- Internal filter for PCM frequency
- Improved shielding against EMI
- Supply voltage: 2.7 V to 5.5 V
- Improved immunity against ambient light
- Insensitive to supply voltage ripple and noise
- Compliant to RoHS directive 2002/95/EC and in accordance to WEEE 2002/96/EC



**RoHS**  
COMPLIANT

### DESCRIPTION

The TSOP22.., TSOP24.. series are miniaturized receivers for infrared remote control systems. A PIN diode and a preamplifier are assembled on a lead frame, the epoxy package acts as an IR filter.

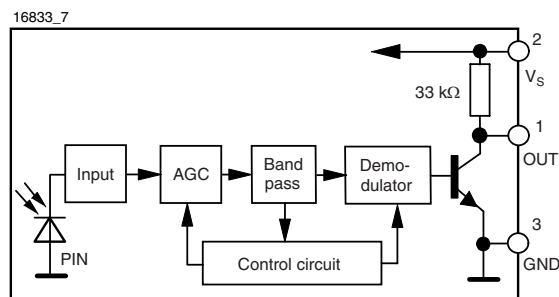
The demodulated output signal can be directly decoded by a microprocessor. The TSOP22.. is compatible with all common IR remote control data formats. The TSOP24.. is optimized to suppress almost all spurious pulses from energy saving fluorescent lamps but will also suppress some data signals.

This component has not been qualified according to automotive specifications.

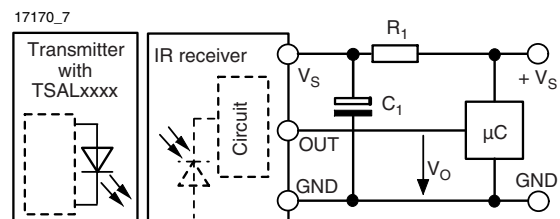
### PARTS TABLE

| CARRIER FREQUENCY | STANDARD APPLICATIONS (AGC2/AGC8) | VERY NOISY ENVIROMENTS (AGC4) |
|-------------------|-----------------------------------|-------------------------------|
| 30 kHz            | TSOP2230                          | TSOP2430                      |
| 33 kHz            | TSOP2233                          | TSOP2433                      |
| 36 kHz            | TSOP2236                          | TSOP2436                      |
| 36.7 kHz          | TSOP2237                          | TSOP2437                      |
| 38 kHz            | TSOP2238                          | TSOP2438                      |
| 40 kHz            | TSOP2240                          | TSOP2440                      |
| 56 kHz            | TSOP2256                          | TSOP2456                      |

### BLOCK DIAGRAM



### APPLICATION CIRCUIT



The external components  $R_1$  and  $C_1$  are optional to improve the robustness against electrical overstress (typical values are  $R_1 = 100 \Omega$ ,  $C_1 = 0.1 \mu F$ ). The output voltage  $V_o$  should not be pulled down to a level below 1 V by the external circuit. The capacitive load at the output should be less than 2 nF.

| ABSOLUTE MAXIMUM RATINGS (1) |                               |             |                          |      |
|------------------------------|-------------------------------|-------------|--------------------------|------|
| PARAMETER                    | TEST CONDITION                | SYMBOL      | VALUE                    | UNIT |
| Supply voltage (pin 2)       |                               | $V_S$       | - 0.3 to + 6             | V    |
| Supply current (pin 2)       |                               | $I_S$       | 5                        | mA   |
| Output voltage (pin 1)       |                               | $V_O$       | - 0.3 to 5.5             | V    |
| Voltage at output to supply  |                               | $V_S - V_O$ | - 0.3 to ( $V_S + 0.3$ ) | V    |
| Output current (pin 1)       |                               | $I_O$       | 5                        | mA   |
| Junction temperature         |                               | $T_j$       | 100                      | °C   |
| Storage temperature range    |                               | $T_{stg}$   | - 25 to + 85             | °C   |
| Operating temperature range  |                               | $T_{amb}$   | - 25 to + 85             | °C   |
| Power consumption            | $T_{amb} \leq 85$ °C          | $P_{tot}$   | 10                       | mW   |
| Soldering temperature        | $t \leq 10$ s, 1 mm from case | $T_{sd}$    | 260                      | °C   |

**Note**

(1) Stresses beyond those listed under “Absolute Maximum Ratings” may cause permanent damage to the device. This is a stress rating only and functional operation of the device at these or any other conditions beyond those indicated in the operational sections of this specification is not implied. Exposure to absolute maximum rating conditions for extended periods may affect the device reliability.

| ELECTRICAL AND OPTICAL CHARACTERISTICS (1) |  |              |      |          |      |                   |
|--|--|--------------|------|----------|------|-------------------|
| PARAMETER                                  | TEST CONDITION   | SYMBOL       | MIN. | TYP.     | MAX. | UNIT              |
| Supply current (pin 2)                     | $E_v = 0, V_S = 5$ V   | $I_{SD}$     | 0.65 | 0.85     | 1.05 | mA                |
|  | $E_v = 40$ klx, sunlight   | $I_{SH}$     |      | 0.95     |      | mA                |
| Supply voltage                             |  | $V_S$        | 2.7  |          | 5.5  | V                 |
| Transmission distance                      | $E_v = 0$ , test signal see fig. 1, IR diode TSAL6200, $I_F = 400$ mA                      | $d$          |      | 45       |      | m                 |
| Output voltage low (pin 1)                 | $I_{OSL} = 0.5$ mA, $E_e = 0.7$ mW/m <sup>2</sup> , test signal see fig. 1                 | $V_{OSL}$    |      |          | 100  | mV                |
| Minimum irradiance                         | Pulse width tolerance: $t_{pi} - 5/f_0 < t_{po} < t_{pi} + 6/f_0$ , test signal see fig. 1 | $E_e$ min.   |      | 0.17     | 0.35 | mW/m <sup>2</sup> |
| Maximum irradiance                         | $t_{pi} - 5/f_0 < t_{po} < t_{pi} + 6/f_0$ , test signal see fig. 1                        | $E_e$ max.   | 30   |          |      | W/m <sup>2</sup>  |
| Directivity                                | Angle of half transmission distance  | $\phi_{1/2}$ |      | $\pm 45$ |      | deg               |

**Note**

(1)  $T_{amb} = 25$  °C, unless otherwise specified

**TYPICAL CHARACTERISTICS**

$T_{amb} = 25$  °C, unless otherwise specified

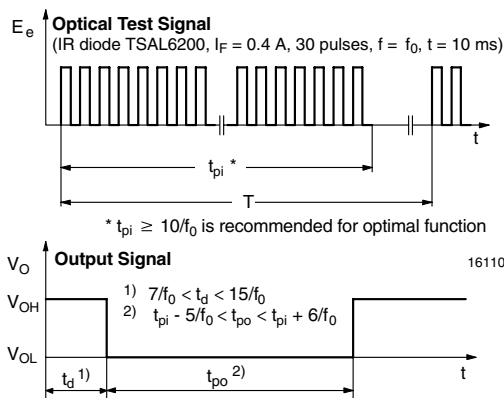


Fig. 1 - Output Active Low

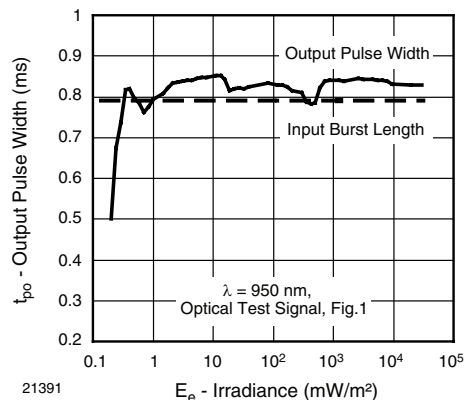


Fig. 2 - Pulse Length and Sensitivity in Dark Ambient

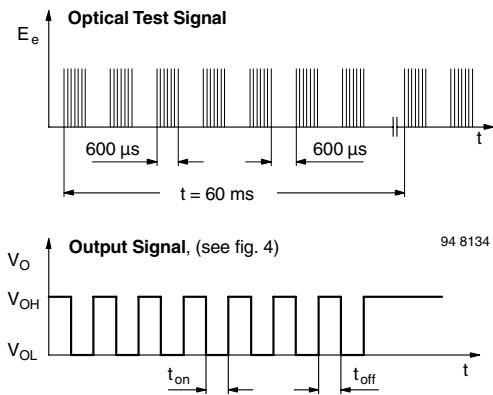


Fig. 3 - Output Function

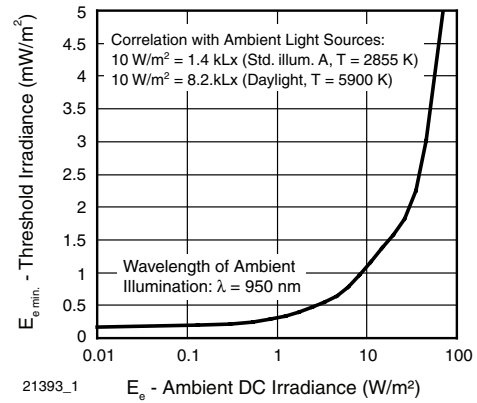


Fig. 6 - Sensitivity in Bright Ambient

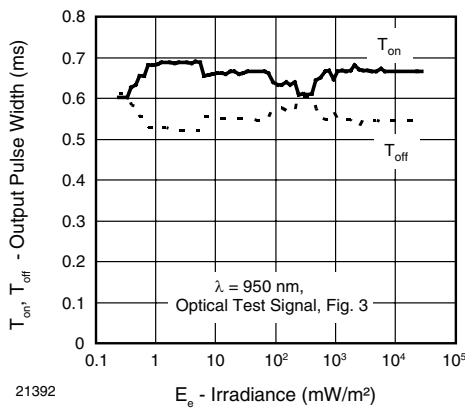


Fig. 4 - Output Pulse Diagram

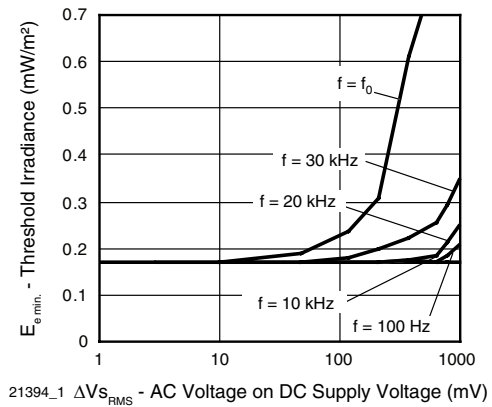


Fig. 7 - Sensitivity vs. Supply Voltage Disturbances

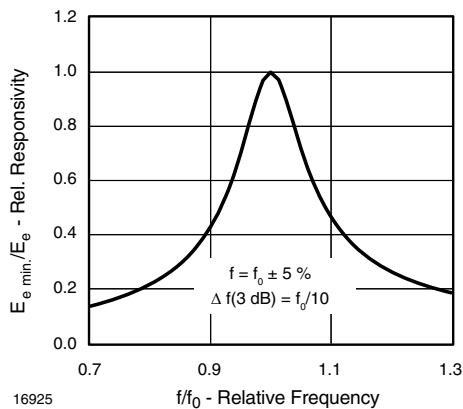


Fig. 5 - Frequency Dependence of Responsivity

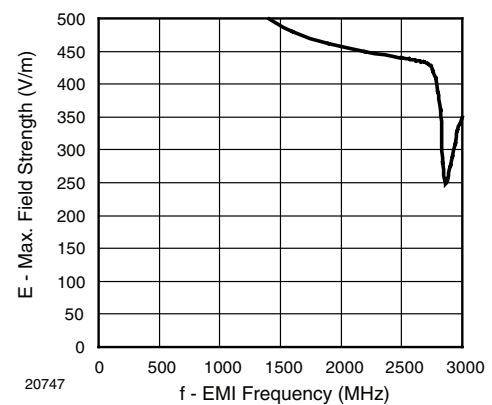
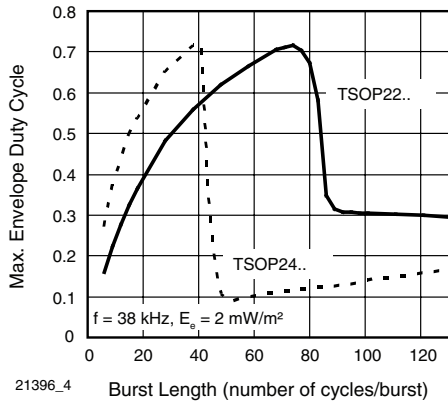


Fig. 8 - Sensitivity vs. Electric Field Disturbances

# New TSOP22.., TSOP24..

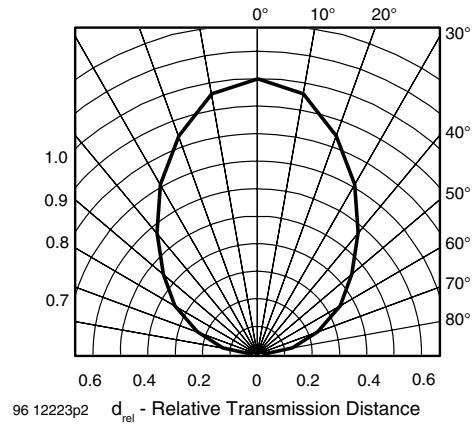


Vishay Semiconductors IR Receiver Modules for Remote Control Systems



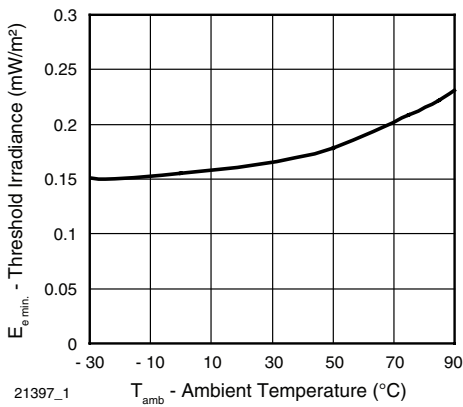
21396\_4

Fig. 9 - Max. Envelope Duty Cycle vs. Burst Length



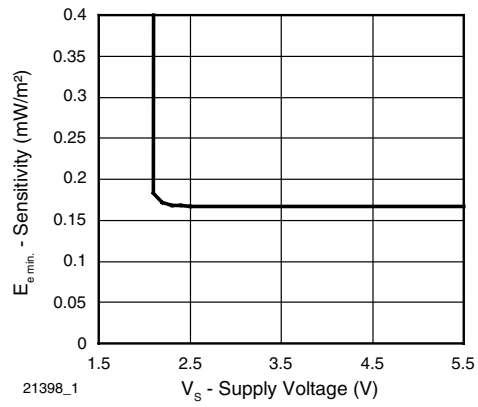
96 12223p2

Fig. 12 - Horizontal Directivity



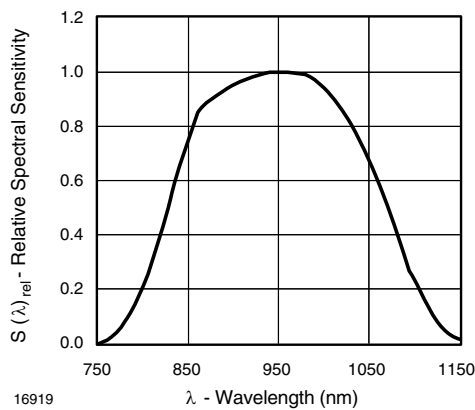
21397\_1

Fig. 10 - Sensitivity vs. Ambient Temperature



21398\_1

Fig. 13 - Sensitivity vs. Supply Voltage



16919

Fig. 11 - Relative Spectral Sensitivity vs. Wavelength

### SUITABLE DATA FORMAT

The TSOP22.., TSOP24.. series are designed to suppress spurious output pulses due to noise or disturbance signals. Data and disturbance signals can be distinguished by the devices according to carrier frequency, burst length and envelope duty cycle. The data signal should be close to the band-pass center frequency (e.g. 38 kHz) and fulfill the conditions in the table below.

When a data signal is applied to the TSOP22.., TSOP24.. in the presence of a disturbance signal, the sensitivity of the receiver is reduced to insure that no spurious pulses are present at the output. Some examples of disturbance signals which are suppressed are:

- DC light (e.g. from tungsten bulb or sunlight)
- Continuous signals at any frequency
- Strongly or weakly modulated noise from fluorescent lamps with electronic ballasts (see figure 14 or figure 15)

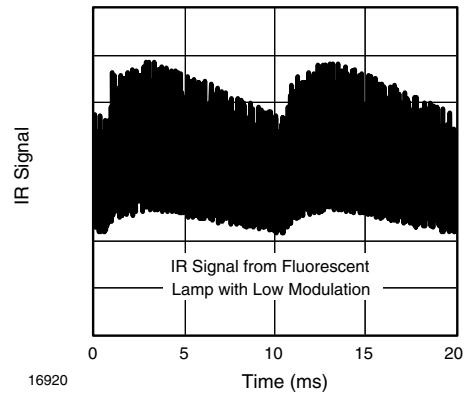


Fig. 14 - IR Signal from Fluorescent Lamp with Low Modulation

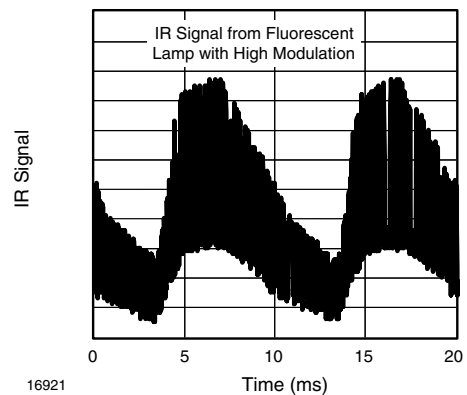


Fig. 15 - IR Signal from Fluorescent Lamp with High Modulation

|  | TSOP22..                                       | TSOP24..  |
|--|--|---|
| Minimum burst length   | 10 cycles/burst                                | 10 cycles/burst                                 |
| After each burst of length a minimum gap time is required of               | 10 to 70 cycles<br>≥ 12 cycles                 | 10 to 35 cycles<br>≥ 12 cycles                  |
| For bursts greater than a minimum gap time in the data stream is needed of | 70 cycles<br>> 4 x burst length                | 35 cycles<br>> 10 x burst length                |
| Maximum number of continuous short bursts/second                           | 800  | 1300  |
| Recommended for NEC code   | yes  | yes   |
| Recommended for RC5/RC6 code   | yes  | yes   |
| Recommended for Sony code  | yes  | no  |
| Recommended for Thomson 56 kHz code  | yes  | yes   |
| Recommended for Mitsubishi code (38 kHz, preburst 8 ms, 16 bit)            | yes  | yes   |
| Recommended for Sharp code   | yes  | yes   |
| Suppression of interference from fluorescent lamps                         | Most common disturbance signals are suppressed | Even extreme disturbance signals are suppressed |

#### Note

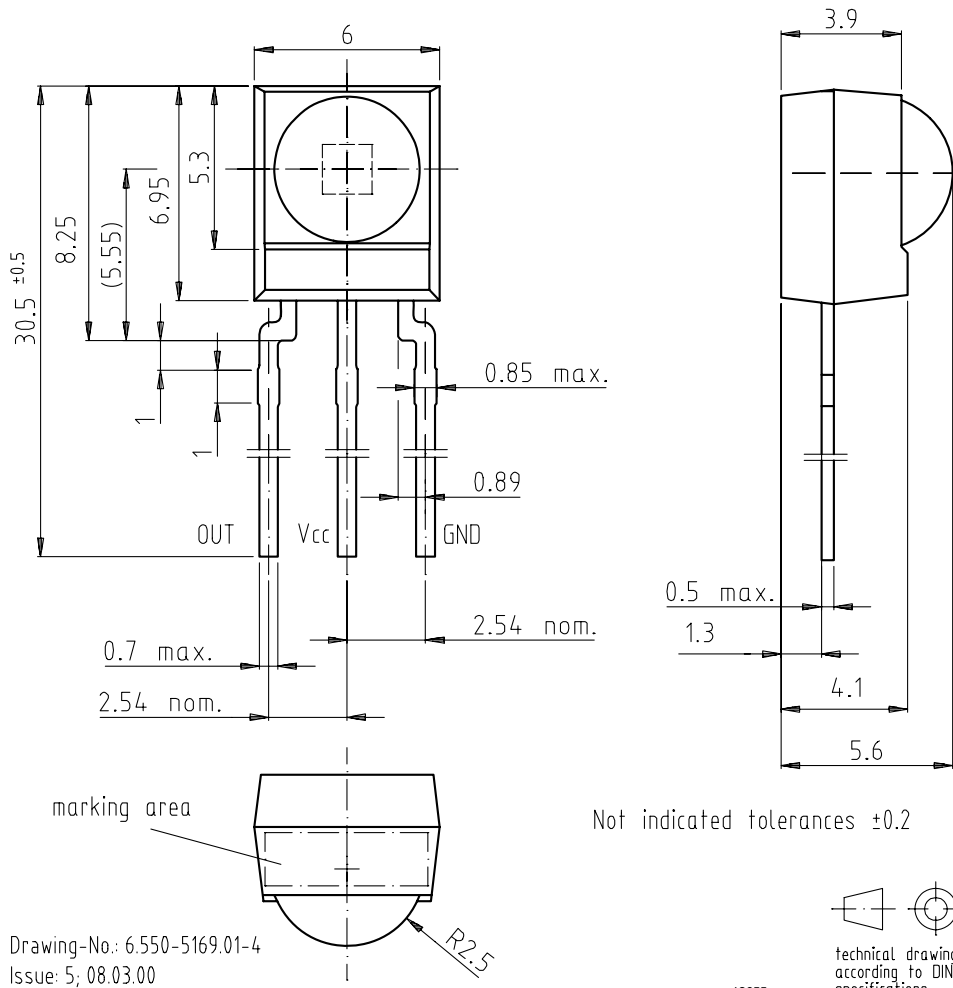
For data formats with short bursts please see the datasheet of TSOP21.., TSOP23..

# New TSOP22.., TSOP24..



Vishay Semiconductors IR Receiver Modules for Remote Control Systems

## PACKAGE DIMENSIONS in millimeters



Drawing-No.: 6.550-5169.01-4  
Issue: 5; 08.03.00



## Disclaimer

All product specifications and data are subject to change without notice.

Vishay Intertechnology, Inc., its affiliates, agents, and employees, and all persons acting on its or their behalf (collectively, "Vishay"), disclaim any and all liability for any errors, inaccuracies or incompleteness contained herein or in any other disclosure relating to any product.

Vishay disclaims any and all liability arising out of the use or application of any product described herein or of any information provided herein to the maximum extent permitted by law. The product specifications do not expand or otherwise modify Vishay's terms and conditions of purchase, including but not limited to the warranty expressed therein, which apply to these products.

No license, express or implied, by estoppel or otherwise, to any intellectual property rights is granted by this document or by any conduct of Vishay.

The products shown herein are not designed for use in medical, life-saving, or life-sustaining applications unless otherwise expressly indicated. Customers using or selling Vishay products not expressly indicated for use in such applications do so entirely at their own risk and agree to fully indemnify Vishay for any damages arising or resulting from such use or sale. Please contact authorized Vishay personnel to obtain written terms and conditions regarding products designed for such applications.

Product names and markings noted herein may be trademarks of their respective owners.