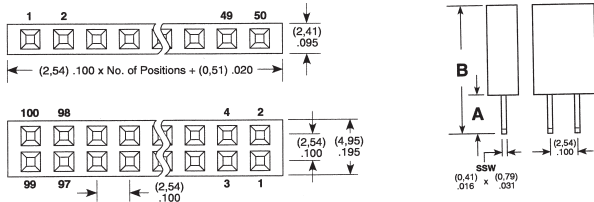
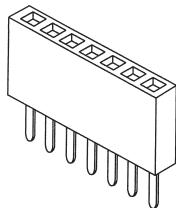


## SAMTEC SERIES TFM .050" X .050" MICRO STRIPS MATES WITH SFM SERIES

**SPECIFICATIONS:** Insulation material: Black liquid crystal polymer. Contact material: Phosphor bronze. Current rating: 2A @ 80°C ambient. Plating: 30μ" (0.76μm) gold on contact, 150μ" (3.81μm) tin on tail. SMT lead coplanarity: .006" (0.15mm) max (30-50), .004" (0.10mm) max (05-25). Mated with SFM. Operating temperature: -65°C to +125°C.

Cat. No.	No. of Contacts Per Row	Dim. Inches (mm) A	Net Price
<b>DOUBLE ROW, THROUGH HOLE</b>			
TFM-105-01-S-D	5	.220 (5.59)	\$1.36
TFM-110-01-S-D	10	.220 (5.59)	2.73
TFM-115-01-S-D	15	.220 (5.59)	3.46
TFM-120-01-S-D	20	.220 (5.59)	4.62
TFM-125-01-S-D	25	.220 (5.59)	5.77
TFM-130-01-S-D	30	.220 (5.59)	6.93
TFM-135-01-S-D	35	.220 (5.59)	7.35
TFM-140-01-S-D	40	.220 (5.59)	8.40
TFM-145-01-S-D	45	.220 (5.59)	9.45
TFM-150-01-S-D	50	.220 (5.59)	10.50

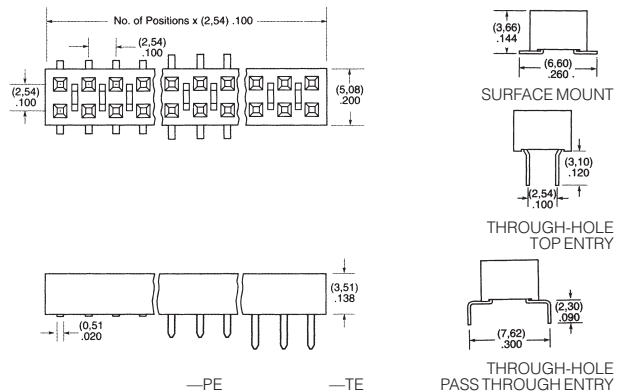
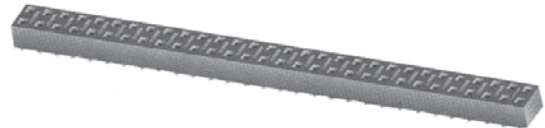
Cat. No.	No. of Contacts Per Row	Dim. Inches (mm) A	Net Price
<b>DOUBLE ROW, SURFACE MOUNT</b>			
TFM-105-02-S-D	5	.225 (5.72)	\$1.50
TFM-110-02-S-D	10	.225 (5.72)	3.00
TFM-115-02-S-D	15	.225 (5.72)	3.81
TFM-120-02-S-D	20	.225 (5.72)	5.08
TFM-125-02-S-D	25	.225 (5.72)	6.35
TFM-130-02-S-D	30	.225 (5.72)	7.62
TFM-135-02-S-D	35	.225 (5.72)	8.08
TFM-140-02-S-D	40	.225 (5.72)	9.24
TFM-145-02-S-D	45	.225 (5.72)	10.39
TFM-150-02-S-D	50	.225 (5.72)	11.55



## SAMTEC SERIES SSW .025" SQ SOCKET STRIPS MATES WITH TSW AND TSM SERIES

**SPECIFICATIONS:** Insulation material: Black liquid crystal polymer. Contact material: Phosphor bronze. Current rating: 3A continuous. Max cycles: 100 with 10μ" (0.25μm) Au. Contact resistance: 10mΩ max. Operating temperature: -65°C to +105°C with tin; -65°C to +125°C with gold.

Cat. No.	No. of Contacts Per Row	Dim. Inches (mm)		Net Price
		A	B	
<b>DOUBLE ROW, GOLD ON CONTACT, GOLD FLASH ON TAIL</b>				
SSW-102-01-G-D	2	.100 (2.54)	.435 (11.05)	\$ .61
SSW-104-01-G-D	4	.100 (2.54)	.435 (11.05)	.95
SSW-106-01-G-D	6	.100 (2.54)	.435 (11.05)	1.02
SSW-108-01-G-D	8	.100 (2.54)	.435 (11.05)	1.36
SSW-112-01-G-D	12	.100 (2.54)	.435 (11.05)	2.03
SSW-124-01-G-D	24	.100 (2.54)	.435 (11.05)	4.07
SSW-136-01-G-D	36	.100 (2.54)	.435 (11.05)	6.11
SSW-150-01-G-D	50	.100 (2.54)	.435 (11.05)	6.79
<b>SINGLE ROW, GOLD ON CONTACT, GOLD FLASH ON TAIL</b>				
SSW-102-01-G-S	2	.100 (2.54)	.435 (11.05)	.36
SSW-104-01-G-S	4	.100 (2.54)	.435 (11.05)	.56
SSW-106-01-G-S	6	.100 (2.54)	.435 (11.05)	.60
SSW-108-01-G-S	8	.100 (2.54)	.435 (11.05)	.80
SSW-112-01-G-S	12	.100 (2.54)	.435 (11.05)	1.19
SSW-124-01-G-S	24	.100 (2.54)	.435 (11.05)	2.39
SSW-136-01-G-S	36	.100 (2.54)	.435 (11.05)	3.59
SSW-150-01-G-S	50	.100 (2.54)	.435 (11.05)	3.98
<b>DOUBLE ROW, TIN ON CONTACT AND TAIL</b>				
SSW-102-01-T-D	2	.100 (2.54)	.435 (11.05)	.52
SSW-104-01-T-D	4	.100 (2.54)	.435 (11.05)	.81
SSW-106-01-T-D	6	.100 (2.54)	.435 (11.05)	.87
SSW-108-01-T-D	8	.100 (2.54)	.435 (11.05)	1.15
SSW-112-01-T-D	12	.100 (2.54)	.435 (11.05)	1.73
SSW-124-01-T-D	24	.100 (2.54)	.435 (11.05)	3.46
SSW-136-01-T-D	36	.100 (2.54)	.435 (11.05)	5.19
SSW-150-01-T-D	50	.100 (2.54)	.435 (11.05)	5.77
<b>SINGLE ROW, TIN ON CONTACT AND TAIL</b>				
SSW-102-01-T-S	2	.100 (2.54)	.435 (11.05)	.30
SSW-104-01-T-S	4	.100 (2.54)	.435 (11.05)	.47
SSW-106-01-T-S	6	.100 (2.54)	.435 (11.05)	.51
SSW-108-01-T-S	8	.100 (2.54)	.435 (11.05)	.68
SSW-112-01-T-S	12	.100 (2.54)	.435 (11.05)	1.02
SSW-124-01-T-S	24	.100 (2.54)	.435 (11.05)	2.03
SSW-136-01-T-S	36	.100 (2.54)	.435 (11.05)	3.05
SSW-150-01-T-S	50	.100 (2.54)	.435 (11.05)	3.39

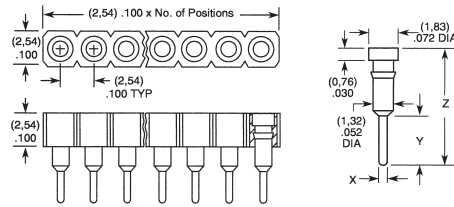


## SAMTEC SERIES HLE .025" SOCKETS MATES WITH TSW AND TSM SERIES

**SPECIFICATIONS:** Insulation material: Liquid crystal polymer. Contact material: BeCu. Plating: Au over 50μ" (1.27μm) Ni. SMT lead coplanarity: .004" (0.10mm) max (02-20), .006" (0.15mm) (21-50). Insertion depth: .070" (1.78mm) to .135" (3.43mm) pass-through or .102" (2.59mm) min. for bottom entry. Operating temperature: -65°C to +125°C.

Continued on next page....

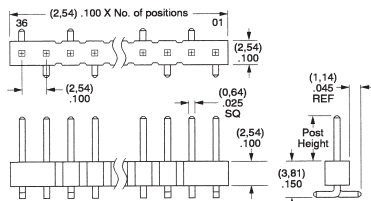
Cat. No.	No. of Contacts Per Row	Contact Plating	Net Price
<b>SURFACE MOUNT</b>			
HLE-102-02-G-DV	102	Gold	\$ .91
HLE-107-02-S-DV	107	Gold on Contact, Tin on Tail	2.36
<b>THROUGH-HOLE, TOP ENTRY</b>			
HLE-106-02-G-DV-TE	106	Gold	1.57
HLE-108-02-G-DV-TE	108	Gold	1.80
HLE-132-02-G-DV-TE	132	Gold	5.99
HLE-150-02-S-DV-TE	150	Gold on Contact, Tin on Tail	10.52
<b>THROUGH-HOLE, PASS THROUGH ENTRY</b>			
HLE-105-02-G-DV-PE	105	Gold	1.40
HLE-117-02-G-DV-PE	117	Gold	3.18



### SAMTEC SERIES SS SOCKET STRIPS

**SPECIFICATIONS:** Insulation material: Black glass filled polyester. Contact material BeCu. Shell: Brass. Current rating: 1A. Plating: 30μm (0.76μm) gold contact, 10μm (0.25μm) gold shell. Contact resistance: 10mΩ max. Insertion force: 9 oz (2,50N) avg., 16oz (4,45N) max. Operating temperature: -65°C + 125°C.

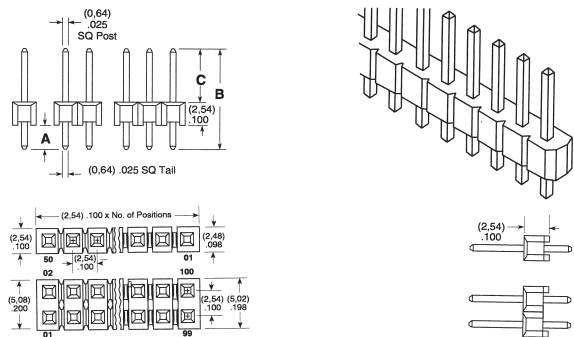
Cat. No.	No. of Contacts Per Row	Dimensions mm			Net Price
		X	Y	Z	
<b>SINGLE ROW</b>					
SS-102-G-2	2	0.51	3.18	7.62	\$ .23
SS-104-G-2	4	0.51	3.18	7.62	.47
SS-108-G-2	8	0.51	3.18	7.62	.94
SS-112-G-2	12	0.51	3.18	7.62	1.40
SS-128-G-2	28	0.51	3.18	7.62	3.27
SS-132-G-2	32	0.51	3.18	7.62	3.18



### SAMTEC SERIES TSM .025" SQUARE TERMINAL STRIPS MATES WITH SSW SERIES

**SPECIFICATIONS:** Insulation material: Black liquid crystal polymer. Contact material: Phosphor bronze. Current rating: 3A continuous. Operating temperature: -65°C to +105°C with tin; -65°C + 125°C with gold.

Cat. No.	No. of Contacts Per Row	Post Height Inches (mm)	Net Price
<b>DOUBLE ROW VERTICAL PIN, TIN ON POST AND TAIL</b>			
TSM-102-01-T-DV	2	.230 (5.84)	\$ .25
TSM-104-01-T-DV	4	.230 (5.84)	.51
TSM-108-01-T-DV	8	.230 (5.84)	1.01
TSM-112-01-T-DV	12	.230 (5.84)	1.52
TSM-124-01-T-DV	24	.230 (5.84)	3.03
TSM-136-01-T-DV	36	.230 (5.84)	4.32
<b>SINGLE ROW VERTICAL PIN, TIN ON POST AND TAIL</b>			
TSM-102-01-T-SV	2	.230 (5.84)	.14
TSM-104-01-T-SV	4	.230 (5.84)	.29
TSM-108-01-T-SV	8	.230 (5.84)	.58
TSM-112-01-T-SV	12	.230 (5.84)	.87
TSM-124-01-T-SV	24	.230 (5.84)	1.74
TSM-136-01-T-SV	36	.230 (5.84)	2.48
<b>DOUBLE ROW VERTICAL PIN, GOLD ON POST, TIN ON TAIL</b>			
TSM-102-01-S-DV	2	.230 (5.84)	.36
TSM-104-01-S-DV	4	.230 (5.84)	.71
TSM-108-01-S-DV	8	.230 (5.84)	1.43
TSM-112-01-S-DV	12	.230 (5.84)	2.14
TSM-124-01-S-DV	24	.230 (5.84)	4.28
TSM-136-01-S-DV	36	.230 (5.84)	6.09
<b>SINGLE ROW VERTICAL PIN, GOLD ON POST, TIN ON TAIL</b>			
TSM-102-01-S-SV	2	.20 (5.84)	.20
TSM-104-01-S-SV	4	.20 (5.84)	.41
TSM-108-01-S-SV	8	.20 (5.84)	.82
TSM-112-01-S-SV	12	.20 (5.84)	1.23
TSM-124-01-S-SV	24	.20 (5.84)	2.46
TSM-136-01-S-SV	36	.20 (5.84)	3.50



### SAMTEC SERIES TSW .025" SQUARE TERMINAL STRIPS MATES WITH SSW SERIES

**FEATURES:** Samtec terminal strips are precision drawn Phosphor Bronze wire for a high quality low cost .025" square post. **SPECIFICATIONS:** Insulation material: Black glass filled polyester. Current rating: 3A continuous. Operating temperature: -65°C to +105°C with tin; -65°C + 125°C with gold.

Cat. No.	No. of Contacts Per Row	Dimensions (mm)			Net Price
		A	B	C	
<b>DOUBLE ROW, STRAIGHT PIN, GOLD ON CONTACTS, GOLD FLASH ON BALANCE</b>					
TSW-102-07-G-D	2	2.54	10.92	5.84	\$ .22
TSW-104-07-G-D	4	2.54	10.92	5.84	.43
TSW-106-07-G-D	6	2.54	10.92	5.84	.65
TSW-108-07-G-D	8	2.54	10.92	5.84	.86
TSW-110-07-G-D	10	2.54	10.92	5.84	1.07
TSW-112-07-G-D	12	2.54	10.92	5.84	1.29
TSW-120-07-G-D	20	2.54	10.92	5.84	2.15
TSW-124-07-G-D	24	2.54	10.92	5.84	2.58
TSW-136-07-G-D	36	2.54	10.92	5.84	3.87
TSW-150-07-G-D	50	2.54	10.92	5.84	4.30
<b>SINGLE ROW, STRAIGHT PIN, GOLD ON CONTACTS, GOLD FLASH ON BALANCE</b>					
TSW-102-07-G-S	2	2.54	10.92	5.84	.11
TSW-104-07-G-S	4	2.54	10.92	5.84	.22
TSW-106-07-G-S	6	2.54	10.92	5.84	.32
TSW-108-07-G-S	8	2.54	10.92	5.84	.43
TSW-110-07-G-S	10	2.54	10.92	5.84	.54
TSW-112-07-G-S	12	2.54	10.92	5.84	.65
TSW-120-07-G-S	20	2.54	10.92	5.84	1.07
TSW-124-07-G-S	24	2.54	10.92	5.84	1.29
TSW-136-07-G-S	36	2.54	10.92	5.84	1.93
TSW-150-07-G-S	50	2.54	10.92	5.84	2.15

Continued on next page...