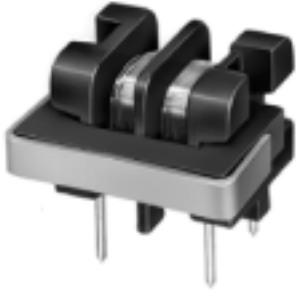


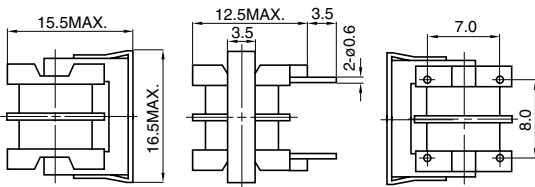
# UU9LFH

## Outline

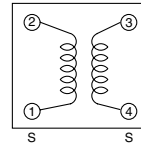
Common mode chokes for effective AC line noise prevention..



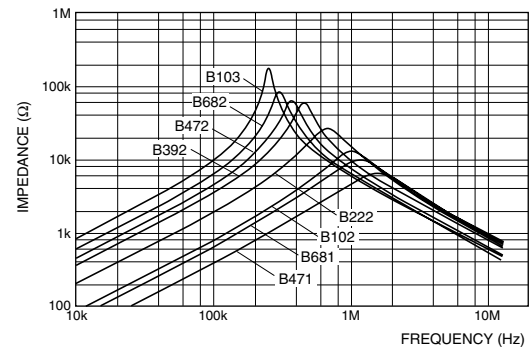
## ■ Dimensions (mm)



## ■ Schematics



## ■ Impedance Characteristics



## ■ Features

- Small size and inexpensive type.

## ■ Application

- Multi-function telephones
- AC adapters, FAXs, Small size fluorescent lights, VCRs, Color TVs

## ■ Specifications

Type	Inductance (1-2)(4-3) @1kHz	Inductance Balance	D.C.R (1-2)(4-3)@ 20°C	Rated current (50/60Hz)
UU9LFH-B471	Min.0.47mH	Max.25μH	Max.0.15Ω	1.0A
UU9LFH-B681	Min.0.68mH	Max.25μH	Max.0.25Ω	0.85A
UU9LFH-B102	Min.1.00mH	Max.50μH	Max.0.35 Ω	0.70A
UU9LFH-B222	Min.2.20mH	Max.50μH	Max.0.70 Ω	0.50A
UU9LFH-B392	Min.3.90mH	Max.100μH	Max.1.20 Ω	0.38A
UU9LFH-B472	Min.4.70mH	Max.100μH	Max.1.60 Ω	0.34A
UU9LFH-B682	Min.6.80mH	Max.150μH	Max.2.50 Ω	0.25A
UU9LFH-B103	Min.10.0mH	Max.200μH	Max.4.00 Ω	0.20A

### Sales Contact

**North America**  
1701 Golf Road, Tower 3  
Suite 400, Rolling  
Meadows, IL 60008, USA  
Tel: (1) 847 545-6700  
Fax: (1) 847 545-6720

**Japan**  
Nihonbashi- ingyocho  
2-Chome, Chuo-ku,  
Tokyo, Japan  
Tel: (81) 03 3667-3301  
Fax: (81) 03 3667-3456

**Hong Kong**  
14/F, Eastern Centre,  
1065 King's Road, Quarry  
Road, Hong Kong  
Tel: (852) 2880-6688  
Fax: (852) 2880-9596

**Taiwan**  
No. 171, Futech Street,  
Hsin-I, Taipei, Taiwan,  
ROC  
Tel: (886) 2 2726-2177  
Fax: (886) 2 2728-2726

**Singapore**  
996 Bendemeer  
Road #04-05 to 06  
Singapore 339944  
Tel: (65) 2963-388  
Fax: (65) 2963-390

**Europe**  
Chaussee de Tervuren113A,  
1160 Brussels  
Belgium  
Email:  
europe.sales@hk.sumida.com