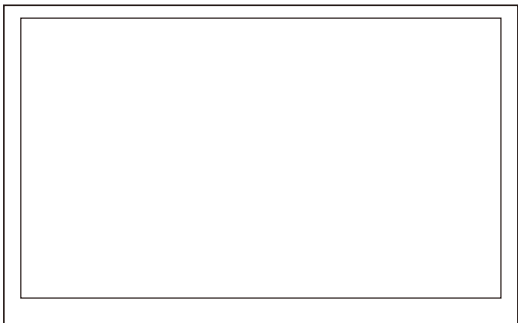




ELECROW 10.1 Inch HDMI Touchscreen Monitor

Model: RC101M



USER MANUAL

Customer Support:

Should there be any questions, please feel free to let us know and contact us with your purchase order number at info@elecrow.com.



IMPORTANT SAFETY WARNING!

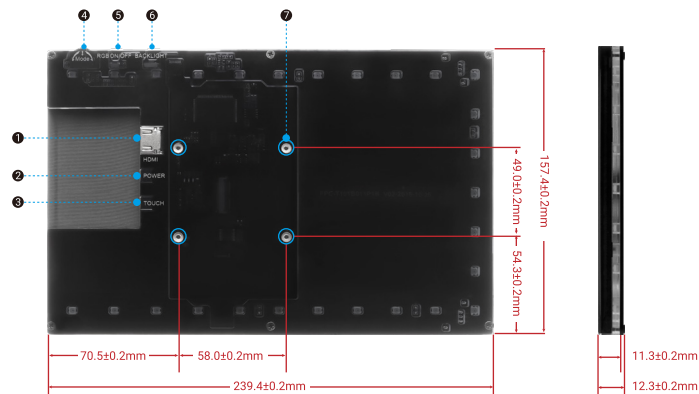
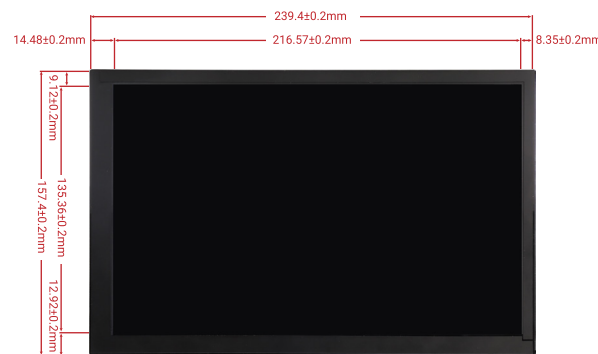
- This appliance can be used by children aged from 8 years and above and persons with reduced physical, sensory or mental capabilities or lack of experience and knowledge if they have been given supervision or instruction concerning use of the appliance in a safe way and understand the hazards involved.
- Children shall not play with the appliance.
- Cleaning and user maintenance shall not be made by children without supervision.
- **WARNING:** Use the detachable supply unit provided with this appliance only.

Chapter 01 Before Using the Product

1-1. Package Contents

- 1 x 10.1 Inch Monitor
- 1 x HDMI to HDMI Cable
- 1 x HDMI to Micro HDMI Connector
- 2 x USB A to Micro USB Cable
- 2 x Pro Stand
- 1 x Screw Driver
- 4 x Small Copper Pillars (to support RPI)
- 4 x M2.5 Screws (to mount RPI)

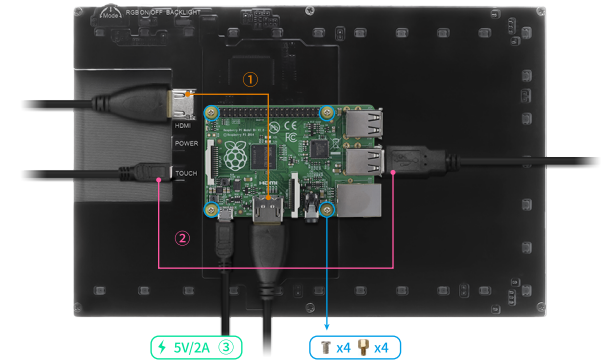
1-2. Product Description



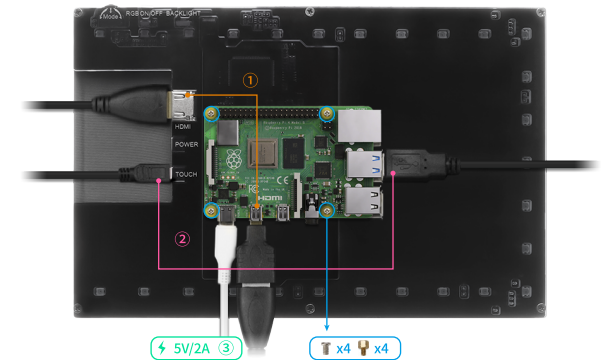
- HDMI interface:** Use HDMI cable to connect with signal source equipment, and the maximum supported resolution is 1080p.
- Power interface:** Using micro USB cable and power connection, this interface is only used for power supply.
- Touch interface:** Micro USB cable is used to connect with the signal source device. This interface is used for touch and power supply.
- Mode:** Press to control the brightness of the RGB light. Scroll it left and right to choose the RGB light mode.
- RGB ON/OFF:** Turn on/off the RGB light.
- Side key:** It is used to adjust the brightness. Press once to increase the brightness by 10%. After reaching 100%, press once again to return to 10%; Press and hold for 3 seconds to turn off the backlight, and then press again to restore the original brightness.
- Copper pillar:** Used to fix raspberry pie.

2-1. Connect the Monitor to Raspberry Pi and Power the Raspberry Pi

- Monitor Connected to Raspberry Pi 3B



- Monitor Connected to Raspberry Pi 4B



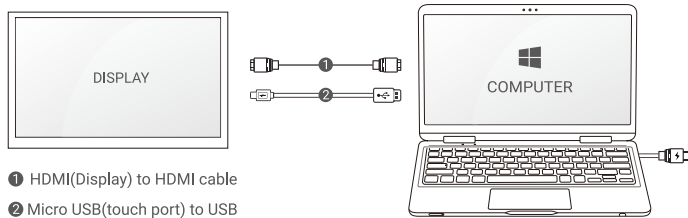
Note
The Raspberry Pi cannot be powered on directly by powering the screen (neither 5V/2A nor 5V/3A).

Please modify the config.txt when connecting to Raspberry Pi.

```
max_usb_current=1
hdmi_force_hotplug=1
config_hdmi_boost=7
hdmi_group=2
hdmi_mode=87
hdmi_drive=1
display_rotate=0
hdmi_cvt 1280 800 60 6 0 0 0
```

Note
When working with Raspberry Pi 4, for the system image of Raspberry Pi after 2021-10-30, for example on Bullseye, please modify "dtoverlay = vc4-kms-v3d" to "dtoverlay = vc4-fkms-v3d" in the config file, otherwise it may fail to start. But on Buster, please comment out "dtoverlay = vc4-fkms-v3d" by adding #.

2-2. Connected to Windows PC/Laptop (with HDMI Port)



Note
1. Please note that when the monitor is connected to a game device or the monitor's touch end is connected to a power source, socket, or other power supply device, the touchscreen doesn't work.
2. If the power supply to the monitor or computer is insufficient, the monitor or computer may flicker, please use AC plug to ensure sufficient power supply.

3-1. Troubleshooting Guide

- This page deals with problems that can be corrected by a user. If the problem still persists after you have tried these solutions, please contact customer support.

Problems	Possible Solutions
The monitor displays black or white screen or no full screen or showing white line	Make sure your image system is intact. Modify the configuration file config.txt
The monitor flickers	Ensure sufficient power. Make sure the screen micro USB and Raspberry Pi USB connection is stable and try using another USB cable.
Touch screen issue	Make sure the micro USB connector is properly connected between the USB ports of the Raspberry Pi and the USB Touch interface of the LCD screen. Try another micro USB cable (supports data transfer).
The LCD cannot display normally when connected to PC	Adjust the output signal to HDMI. Make sure the operating system is Windows. Use the LCD as the only monitor for testing. Connect the USB power cable first and then the HDMI cable. Try to restart your computer.

3-2. Warranty

- ELECROW Monitors carry a one (1) year limited warranty from the purchase date. In order to receive warranty service, proof of purchase of the ELECROW product is required. To obtain warranty service, please contact Customer Support.
- This limited warranty does not cover for:
Improper installation or maintenance; Misuse or Neglect; Repair, modification, or installation of options or parts by you or any third party; Improper environment- Excessive or inadequate heating or air conditioning or electrical powers failures, surges or other irregularities; Fire, flood, earthquake or other accidents.

3-3. Customer Support

- If you have any questions, customer support is always stand by.

✉ info@elecrow.com f @Elecrow t @Elecrow1

Screen Type	IPS screen
Screen Size	10.1 inch
Resolution	1280 x 800
Backlight adjustment	Key Switch Adjustment
Touch Screen Type	Capacitive Touch Screen
Power	Micro USB (5V)
Backlight Power Consumption	5.29W (Backlight 100% brightness, RGB turned off)
Video Input Interface	HDMI (up to 1080p)
Active Area	216.566*135.36 (mm)
Module Size (L x W x H)	239.4*157.4*12.3 ±0.2 (mm)
Backlight Brightness	300 cd/m ²
RGB Model	3535 LED
RGB Power Consumption	7.6W (Backlight 100% brightness, RGB turned on)



Informationon the disposal for Waste Electrical & Electronic Equipment(WEEE). This symbol on the products and accompanying documents means that used electrical and electronic products should not be mixed with general household waste. For proper disposal for treatment, recovery and recycling, please take these products to designated collection points where they will be accepted on a free of charge basis. In some countries you may be able toreturn your products to your local retailer upon the purchase of a new product. Disposing of this product correctly will help you save valuable resources and prevent any possible effects on human health and the environment, which could otherwise arise from inappropriate wastehandling. Please contact your local authority for further details of your near estcollection point for WEEE.